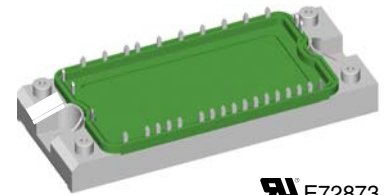
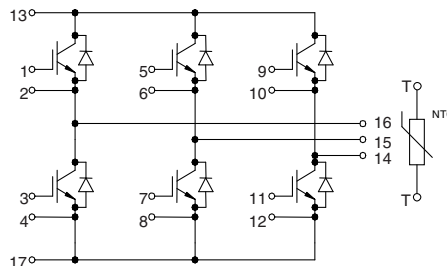


IGBT Modules

Sixpack

Short Circuit SOA Capability
 Square RBSOA

Type	NTC - Option
MWI 75-06 A7	without NTC
MWI 75-06 A7T	with NTC



See outline drawing for pin arrangement

IGBTs		
Symbol	Conditions	Maximum Ratings
V_{CES}	$T_{VJ} = 25^{\circ}\text{C to } 150^{\circ}\text{C}$	600 V
V_{GES}		± 20 V
I_{C25}	$T_C = 25^{\circ}\text{C}$	90 A
I_{C80}	$T_C = 80^{\circ}\text{C}$	60 A
RBSOA	$V_{GE} = \pm 15$ V; $R_G = 18 \Omega$; $T_{VJ} = 125^{\circ}\text{C}$ Clamped inductive load; $L = 100 \mu\text{H}$	$I_{CM} = 120$ A $V_{CEK} \leq V_{CES}$
t_{SC} (SCSOA)	$V_{CE} = V_{CES}$; $V_{GE} = \pm 15$ V; $R_G = 18 \Omega$; $T_{VJ} = 125^{\circ}\text{C}$ non-repetitive	10 μs
P_{tot}	$T_C = 25^{\circ}\text{C}$	280 W

Features

- NPT IGBT technology
- low saturation voltage
- low switching losses
- switching frequency up to 30 kHz
- square RBSOA, no latch up
- high short circuit capability
- positive temperature coefficient for easy paralleling
- MOS input, voltage controlled
- ultra fast free wheeling diodes
- solderable pins for PCB mounting
- package with copper base plate

Advantages

- space savings
- reduced protection circuits
- package designed for wave soldering

Typical Applications

- AC motor control
- AC servo and robot drives
- power supplies

Symbol	Conditions	Characteristic Values ($T_{VJ} = 25^{\circ}\text{C}$, unless otherwise specified)		
		min.	typ.	max.
$V_{CE(sat)}$	$I_C = 75$ A; $V_{GE} = 15$ V; $T_{VJ} = 25^{\circ}\text{C}$ $T_{VJ} = 125^{\circ}\text{C}$	2.1	2.6	V
$V_{GE(th)}$	$I_C = 1.5$ mA; $V_{GE} = V_{CE}$	4.5		6.5 V
I_{CES}	$V_{CE} = V_{CES}$; $V_{GE} = 0$ V; $T_{VJ} = 25^{\circ}\text{C}$ $T_{VJ} = 125^{\circ}\text{C}$	0.9		1.3 mA
I_{GES}	$V_{CE} = 0$ V; $V_{GE} = \pm 20$ V			200 nA
$t_{d(on)}$ t_r $t_{d(off)}$ t_f	Inductive load, $T_{VJ} = 125^{\circ}\text{C}$ $V_{CE} = 300$ V; $I_C = 75$ A $V_{GE} = \pm 15$ V; $R_G = 18 \Omega$		50	ns
E_{on}			50	ns
E_{off}			270	ns
			40	ns
			3.5	mJ
C_{ies}	$V_{CE} = 25$ V; $V_{GE} = 0$ V; $f = 1$ MHz		3200	pF
Q_{Gon}	$V_{CE} = 300$ V; $V_{GE} = 15$ V; $I_C = 75$ A		190	nC
R_{thJC}	(per IGBT)			0.44 K/W

Diodes

Symbol	Conditions	Maximum Ratings	
I_{F25}	$T_C = 25^\circ\text{C}$	140	A
I_{F80}	$T_C = 80^\circ\text{C}$	85	A

Symbol	Conditions	Characteristic Values		
		min.	typ.	max.
V_F	$I_F = 75\text{ A}; V_{GE} = 0\text{ V}; T_{VJ} = 25^\circ\text{C}$ $T_{VJ} = 125^\circ\text{C}$	1.8	2.1	V
I_{RM} t_{rr}	$I_F = 60\text{ A}; di_F/dt = -500\text{ A}/\mu\text{s}; T_{VJ} = 125^\circ\text{C}$ $V_R = 300\text{ V}; V_{GE} = 0\text{ V}$	28		A
		100		ns
R_{thJC}	(per diode)			0.61 K/W

Temperature Sensor NTC (MWI ... A7T version only)

Symbol	Conditions	Characteristic Values		
		min.	typ.	max.
R_{25} $B_{25/50}$	$T = 25^\circ\text{C}$	4.75	5.0	5.25 k Ω
			3375	K

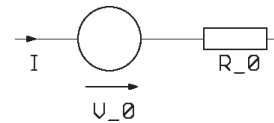
Module

Symbol	Conditions	Maximum Ratings	
T_{VJ} T_{stg}		-40...+150	$^\circ\text{C}$
		-40...+125	$^\circ\text{C}$
V_{ISOL}	$I_{ISOL} \leq 1\text{ mA}; 50/60\text{ Hz}$	2500	V~
M_d	Mounting torque (M5)	2.7 - 3.3	Nm

Symbol	Conditions	Characteristic Values		
		min.	typ.	max.
$R_{pin-chip}$			5	m Ω
d_S d_A	Creepage distance on surface Strike distance in air	6		mm
R_{thCH}	with heatsink compound		0.02	K/W
Weight			180	g

Equivalent Circuits for Simulation

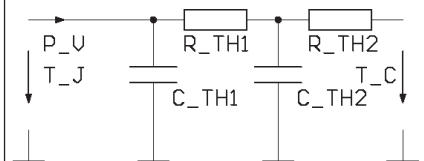
Conduction



IGBT (typ. at $V_{GE} = 15\text{ V}; T_J = 125^\circ\text{C}$)
 $V_0 = 0.95\text{ V}; R_0 = 20\text{ m}\Omega$

Free Wheeling Diode (typ. at $T_J = 125^\circ\text{C}$)
 $V_0 = 1.014\text{ V}; R_0 = 4\text{ m}\Omega$

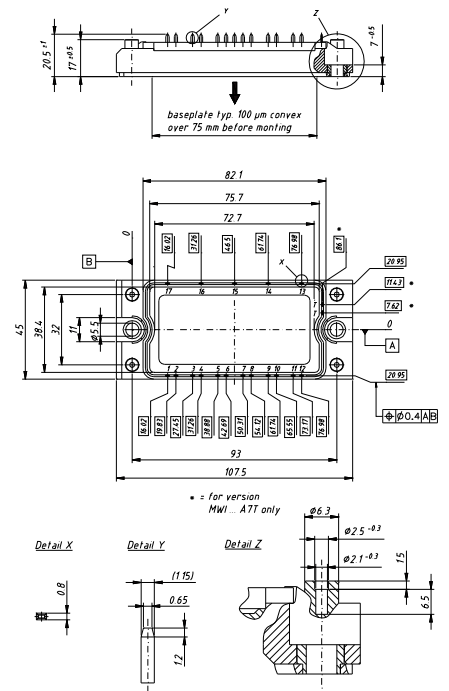
Thermal Response



IGBT (typ.)
 $C_{th1} = 0.248\text{ J/K}; R_{th1} = 0.343\text{ K/W}$
 $C_{th2} = 1.849\text{ J/K}; R_{th2} = 0.097\text{ K/W}$

Free Wheeling Diode (typ.)
 $C_{th1} = 0.23\text{ J/K}; R_{th1} = 0.483\text{ K/W}$
 $C_{th2} = 1.3\text{ J/K}; R_{th2} = 0.127\text{ K/W}$

Dimensions in mm (1 mm = 0.0394")



Higher magnification on page B3 - 72

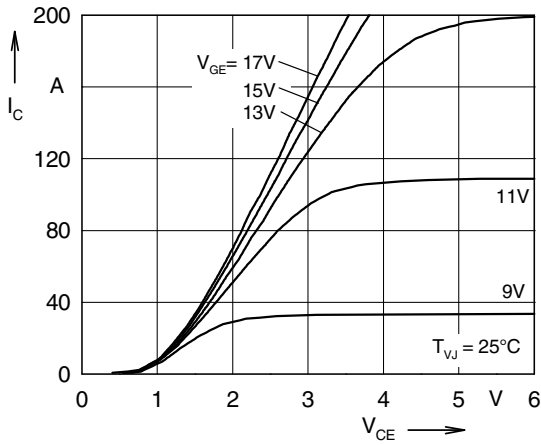


Fig. 1 Typ. output characteristics

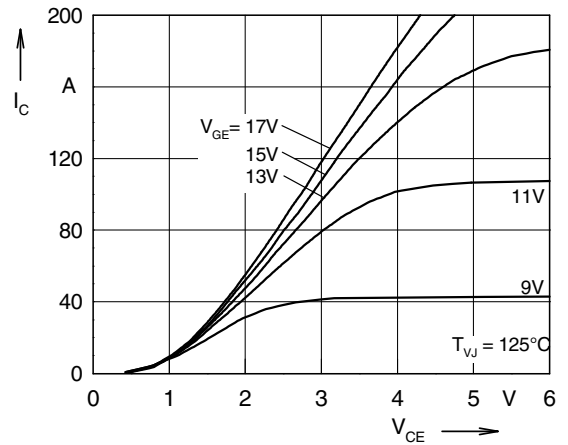


Fig. 2 Typ. output characteristics

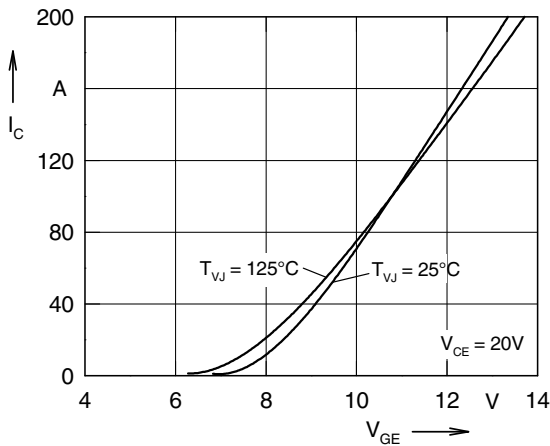


Fig. 3 Typ. transfer characteristics

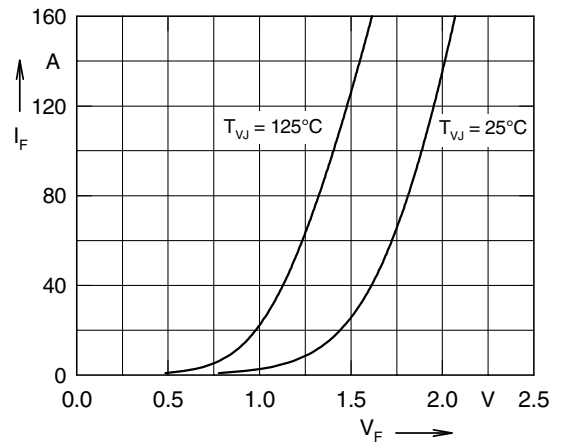


Fig. 4 Typ. forward characteristics of free wheeling diode

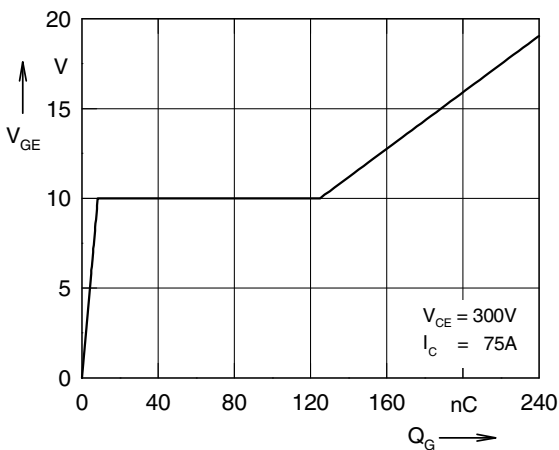


Fig. 5 Typ. turn on gate charge

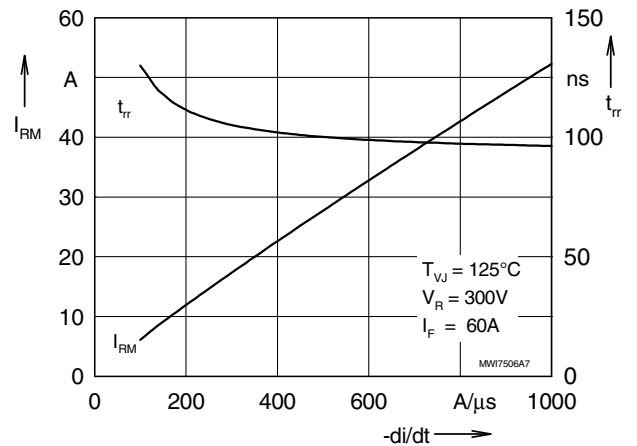


Fig. 6 Typ. turn off characteristics of free wheeling diode

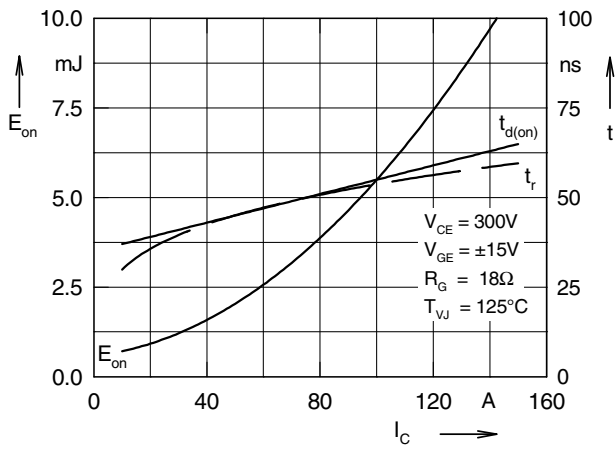


Fig. 7 Typ. turn on energy and switching times versus collector current

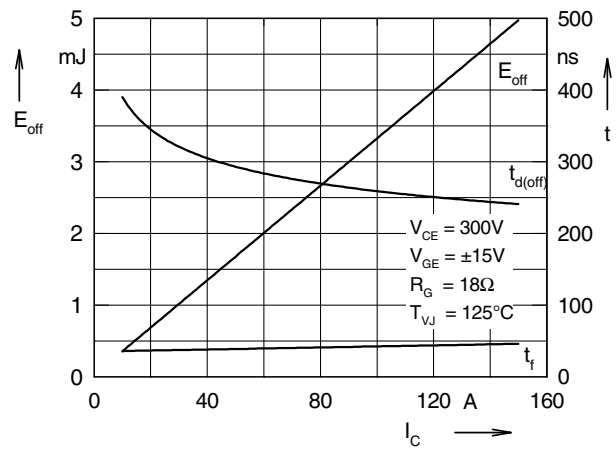


Fig. 8 Typ. turn off energy and switching times versus collector current

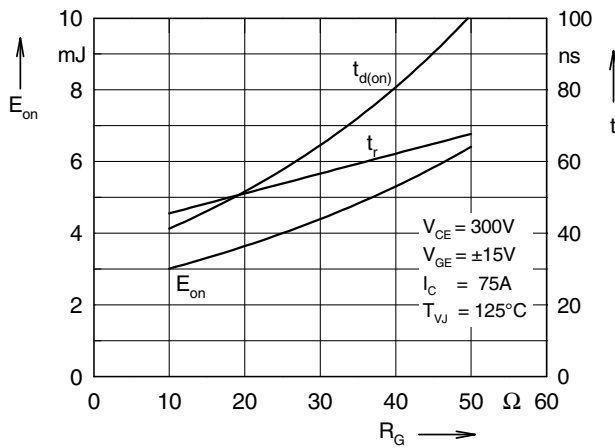


Fig. 9 Typ. turn on energy and switching times versus gate resistor

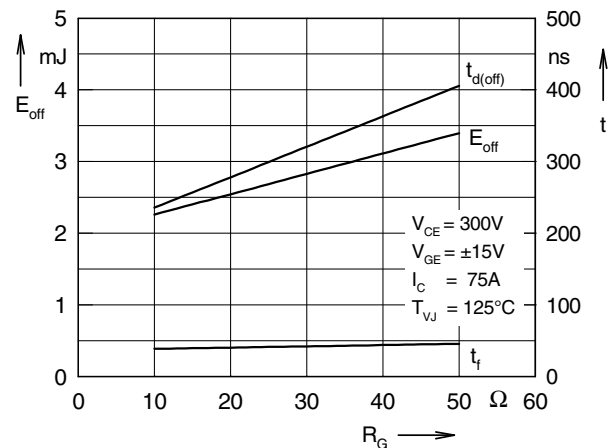


Fig.10 Typ. turn off energy and switching times versus gate resistor

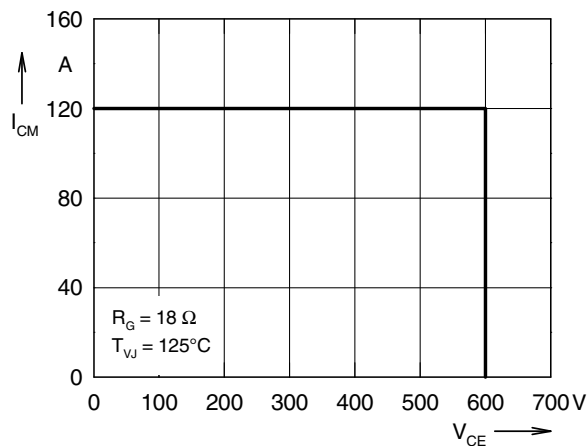


Fig. 11 Reverse biased safe operating area RBSOA

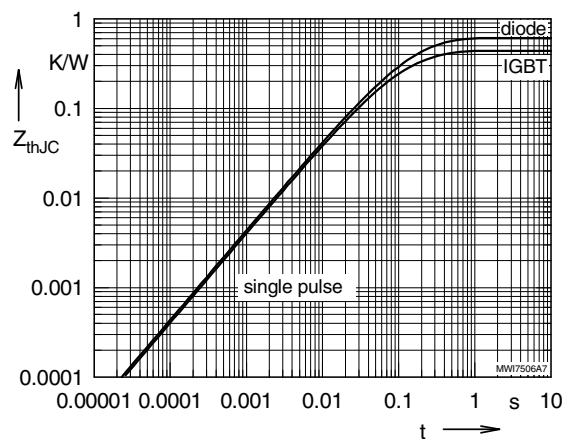


Fig. 12 Typ. transient thermal impedance