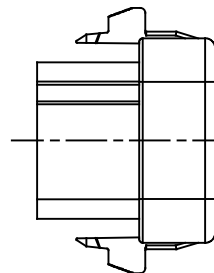
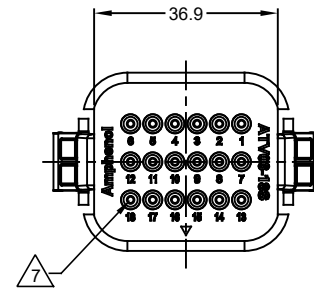
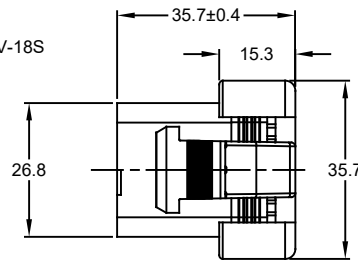
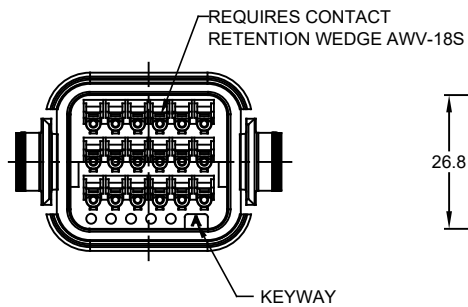
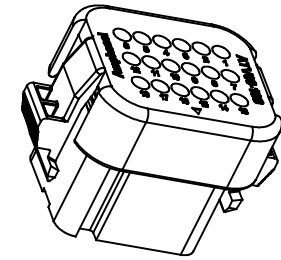
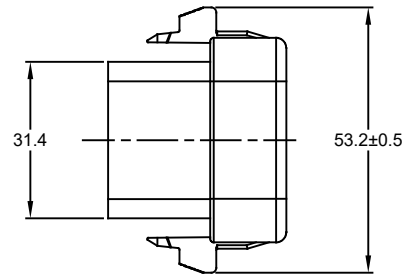


REVISIONS					
REV	ECO	DESCRIPTION	DATE	BY	APPR
A1	-	RELEASE DRAWING	25MAY18	RIMON	TOMMY



NOTES: UNLESS OTHERWISE SPECIFIED

- SEE SHEET 2 FOR KEY ARRANGEMENTS AND COLORS.
- MATERIAL:
HOUSING: THERMOPLASTIC
SEAL: SILICONE RUBBER , COLOR: RED
- MODIFICATIONS: STANDARD DIAMETER WIRE SEAL
- SPECIFICATIONS:
 - CURRENT RATING: 13 AMPS
 - OPERATING TEMPERATURE: -55°C TO +125°C.
 - DIELECTRIC WITHSTANDING VOLTAGE: LESS THAN 2 MILLIAMPS CURRENT LEAKAGE @ 1500 VOLTS AC.
 - INSULATION RESISTANCE: 1000 MEGOHMS MIN @ 25°C.
 - MOISTURE RESISTANCE: IP67 (MATED CONDITION)
 - MATING CYCLE DURABILITY: 100 CYCLES
 - RoHS COMPLIANT
- MATING PART: ATV02-18PX* RECEPTACLE & ATV04-18PX* RECEPTACLE (X = A,B,C,D KEYS ; * = MODIFICATIONS AND COLORS)
- ALL DIMENSIONS ARE FOR REFERENCE USE ONLY.

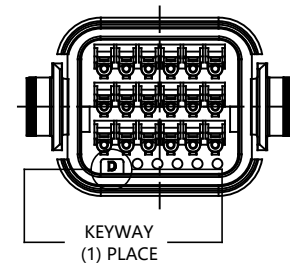
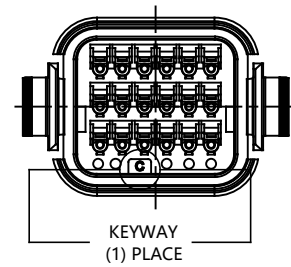
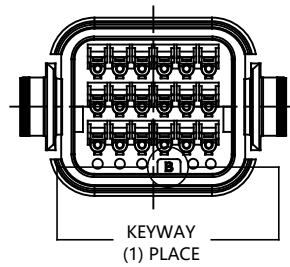
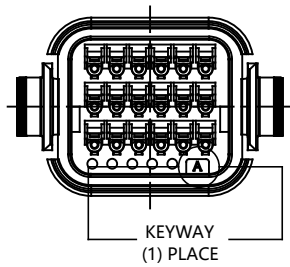
7 CONTACT SIZE AND REAR SEAL WIRE RANGE:

CONTACT SIZE	MIN. INSUL O.D.	MAX. INSUL O.D.	TYPICAL WIRE RANGE
16	2.23 mm (.088 in)	3.68 mm (.145 in)	14 - 20 AWG

SEE SHEET 2		DESCRIPTION		ITEM
QUANTITY	PART NUMBER	MATERIALS LIST		
UNLESS OTHERWISE SPECIFIED 1) All dimensions are in metric(mm). 2) Tolerances are as follows: 1 PL DEC ±0.30 2 PL DEC ±0.15 3 PL DEC ±0.08 Fractions ±1/64 Angles ±1° 3) Note reference =		SIGNATURES DATE		 Sine Systems - www.amphenol-sine.com 44724 Morley Drive Clinton Township, MI 48036 PLUG, 18 PIN, ATV SERIES STANDARD DIAMETER WIRE SEAL
MATERIAL SPECIFICATIONS:		DRAWN: RIMON,MA	25MAY18	
PROCESS SPECIFICATIONS:		CHECKED: ORION,LI	25MAY18	
NEXT ASSY:		ENGINEER:	APPROVAL: TOMMY,XIE 25MAY18	
THIS DRAWING IS SUPPLIED FOR INFORMATION ONLY. DESIGN FEATURES, SPECIFICATIONS AND PERFORMANCE DATA SHOWN HEREON ARE THE PROPERTY OF THE AMPHENOL CORPORATION. NO RIGHTS OF REPRODUCTION ARE IMPLIED. ALL DIMENSIONS ARE SUBJECT TO NORMAL MANUFACTURING VARIATIONS.		CUSTOMER:	SCALE: NONE	REVISION
		SIZE TYPE DWG NO:		A1
		B C- ATV06-18SX		SHEET 1 OF 2

TITLE: PLUG, 18 PIN, ATV SERIES, STANDARD DIAMETER WIRE SEAL
DWG NO: ATV06-18SX
REV: A1
SHEET 1 OF 2

REVISIONS					
REV	ECO	DESCRIPTION	DATE	BY	APPR
A1	-	RELEASE DRAWING	25MAY18	RIMON	TOMMY



KEY-A CONFIGURATION	
COLOR	PART NUMBER
GREY	ATV06-18SA

KEY-B CONFIGURATION	
COLOR	PART NUMBER
BLACK	ATV06-18SB

KEY-C CONFIGURATION	
COLOR	PART NUMBER
GREEN	ATV06-18SC

KEY-D CONFIGURATION	
COLOR	PART NUMBER
BROWN	ATV06-18SD

QUANTITY	SEE SHEET 2	DESCRIPTION	ITEM												
	PART NUMBER														
MATERIALS LIST															
<small>UNLESS OTHERWISE SPECIFIED</small> 1) All dimensions are in metric (mm). 2) Tolerances are as follows: 1 PL DEC ±0.30 Fractions ±1/64 2 PL DEC ±0.15 Angles ±1° 3 PL DEC ±0.08 3) Note reference =		<table border="1"> <thead> <tr> <th>SIGNATURES</th> <th>DATE</th> </tr> </thead> <tbody> <tr> <td>DRAWN: RIMON,MA</td> <td>25MAY18</td> </tr> <tr> <td>CHECKED: ORION,LI</td> <td>25MAY18</td> </tr> <tr> <td>ENGINEER:</td> <td></td> </tr> <tr> <td>APPROVAL: TOMMY,XIE</td> <td>25MAY18</td> </tr> <tr> <td>CUSTOMER:</td> <td></td> </tr> </tbody> </table>		SIGNATURES	DATE	DRAWN: RIMON,MA	25MAY18	CHECKED: ORION,LI	25MAY18	ENGINEER:		APPROVAL: TOMMY,XIE	25MAY18	CUSTOMER:	
SIGNATURES	DATE														
DRAWN: RIMON,MA	25MAY18														
CHECKED: ORION,LI	25MAY18														
ENGINEER:															
APPROVAL: TOMMY,XIE	25MAY18														
CUSTOMER:															
<small>MATERIAL SPECIFICATIONS:</small> THIS DRAWING IS SUPPLIED FOR INFORMATION ONLY. DESIGN FEATURES, SPECIFICATIONS AND PERFORMANCE DATA SHOWN HEREON ARE THE PROPERTY OF THE AMPHENOL CORPORATION. NO RIGHTS OF REPRODUCTION ARE IMPLIED. ALL DIMENSIONS ARE SUBJECT TO NORMAL MANUFACTURING VARIATIONS.		<h1>Amphenol</h1> Sine Systems - www.amphenol-sine.com 44724 Morley Drive Clinton Township, MI 48036													
<small>PROCESS SPECIFICATIONS:</small> NEXT ASSY:		PLUG, 18 PIN, ATV SERIES STANDARD DIAMETER WIRE SEAL													
		<small>SIZE</small> B C-	<small>REVISION</small> A1												
		<small>SCALE</small> NONE	<small>SHEET</small> 2 <small>OF</small> 2												

TITLE: PLUG, 18 PIN, ATV SERIES, STANDARD DIAMETER WIRE SEAL
DWG NO: ATV06-18SX
REV: A1
SH: 2
OF: 2