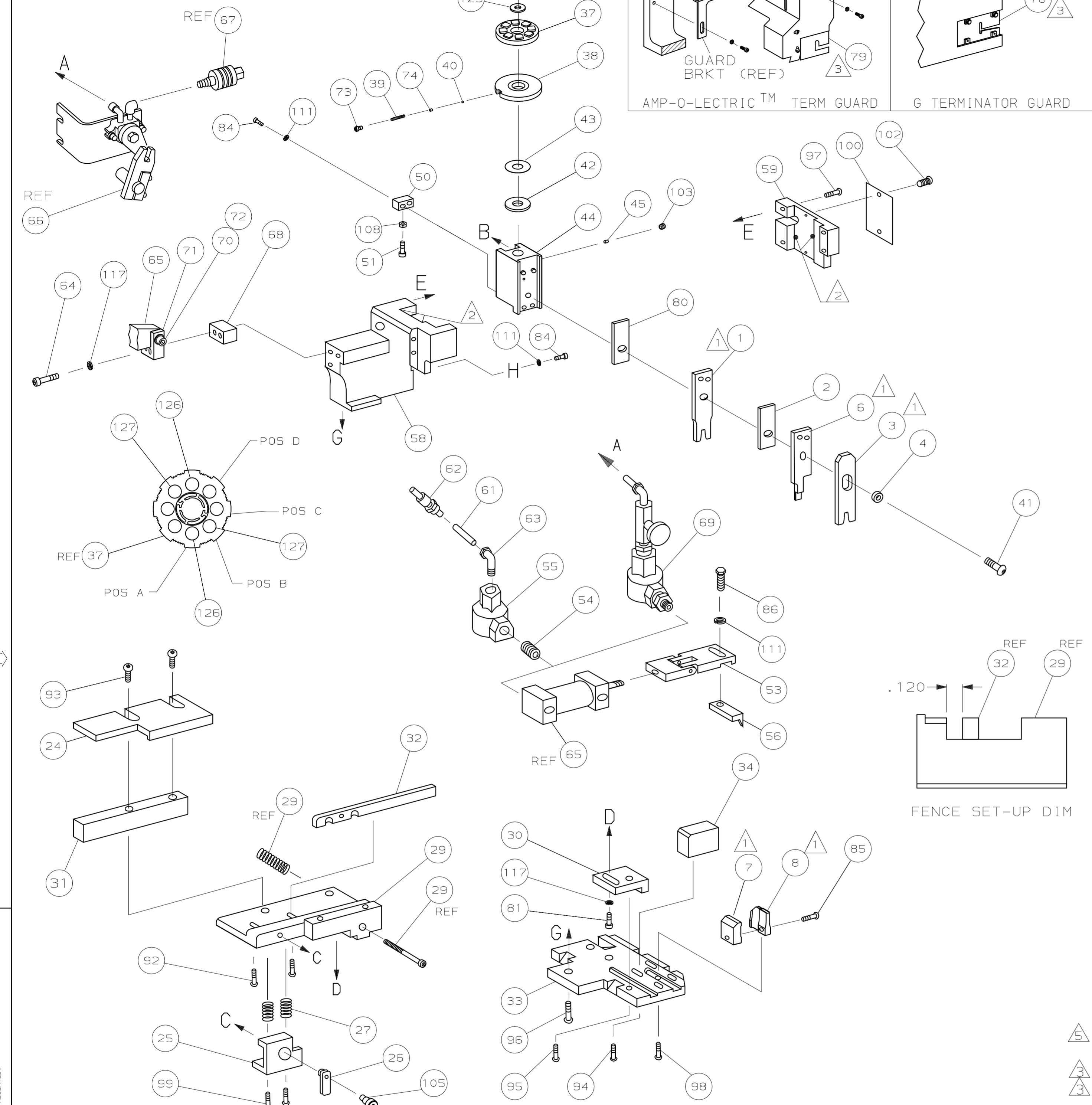
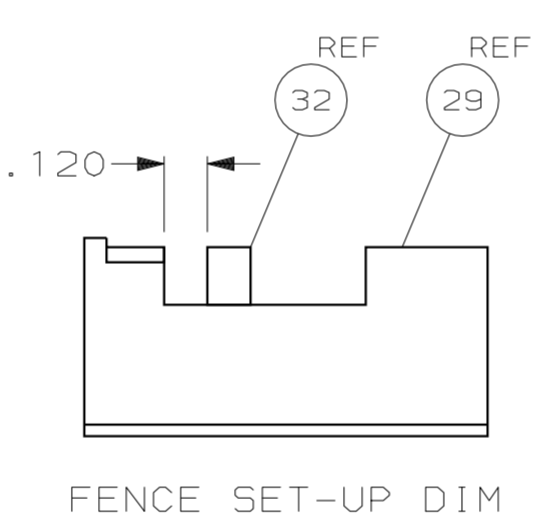
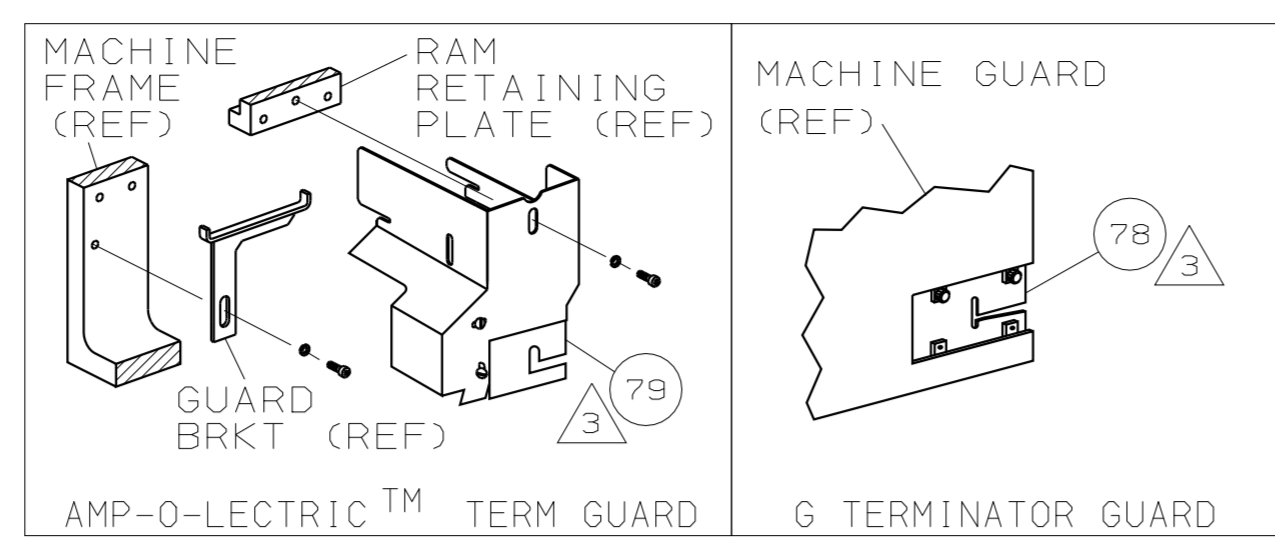


PART NUMBER	REV	FIRST USED
1852118-1	A	122500-1
1852118-2	A	565435-5
1852118-3	A	354500-1

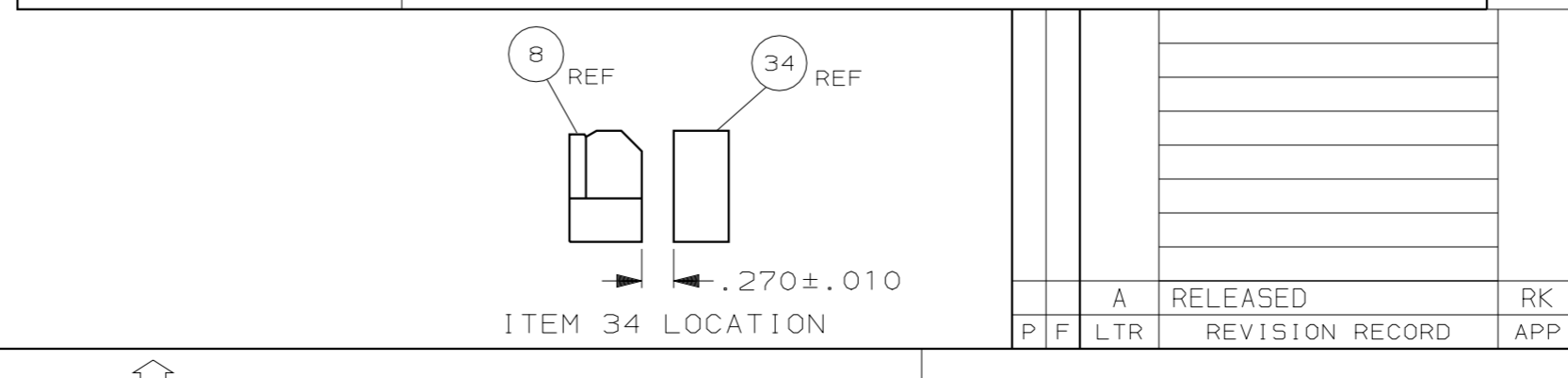


- 1 RECOMMENDED SPARE PARTS.
- 2 GREASE LIGHTLY.
- 3 GUARD MUST BE IN PLACE WHEN OPERATING APPLICATOR IN A BENCH MACHINE.
- 4 SEE DRAWING FOR COMPONENTS
- 5 CUT TO LENGTH AT ASSY
- 6 ADJUST FEED TO CRIMP EVERY SECOND OR THIRD TERMINAL AS REQUIRED.



AMP TERM PN	MFR TERM PN	PACKARD TERMINAL	AMP CRIMP SPECS
1572765	12020337		
		PAD LTR	CRIMP HEIGHT
		A	.094 ±.002 [2.39 ±0.05mm]
		B	.077 ±.002 [1.96 ±0.05mm]
		C	NOT USED
		D	NOT USED
		CRIMP SIZE	TYPE
		WIRE	.145 [3.68mm]
		INSUL	.210 [5.33mm]
			F
			12-10 awg
			φ.200 MAX
WIRE STRIP LENGTH	TERM APPL SPEC	FEED	APPL INSTRUCTION
.353-.368	NONE	1.181/1.772	408-8040
			SET UP GAGE
			LAYOUT
			458637-1

QTY	REQD	PER	ASSY	PART NO	DESCRIPTION	ITEM NO		
129						129		
128						128		
127				9-354778-9	PIN, WIRE DISC (.2990)B	127		
126				6-354778-1	PIN, WIRE DISC (.2800)A	126		
125				986950-1	WASHER, FLAT PRECISION	125		
124				217238-1	GENERAL INSTRUCTION PACKAGE	124		
123				4088040	SF APPL INST 408-8040	123		
122						122		
121						121		
120						120		
119						119		
118						118		
117				21024-5	WASHER, LOCK (#10)ADJ BLOCK	117		
116						116		
115						115		
114						114		
113						113		
112						112		
111				21024-4	WASHER, LOCK (#8) STRIPPER	111		
110						110		
109						109		
108				21018-5	NUT, HEX (NO. 6) HOLDDOWN	108		
107						107		
106						106		
105				22353-8	SCR, SHLD (φ.187x.25) DRAG LEVER	105		
104						104		
103				21009-2	SCR, SKT SET (1/4-20x.25 LW) RAM	103		
102				21017-2	SCR, DRIVE (#2x.19) ID PLATE	102		
101						101		
100				461264-1	PLATE, IDENTIFICATION	100		
99				3-21002-0	SCR, BHC (10-32x.88) DRAG	99		
98				22733-8	SCR, BHC (8-32x.38 LW) ANVIL	98		
97				2-21002-9	SCR, BHC (10-32x.75) CAP	97		
96				2-22733-8	SCR, BHC (1/4-20x.62) HSG	96		
95				2-21002-7	SCR, BHC (10-32x.50) SG ADJ BLK	95		
94				2-21002-2	SCR, BHC (8-32x.50) TERM H DWN	94		
93				2-21002-4	SCR, BHC (8-32x.75) R STP GDE	93		
92				1-21002-4	SCR, BHC (4-40x.38) R STP GDE	92		
91						91		
90						90		
89						89		
88						88		
87						87		
86				2-22603-1	SCR, HEX HD (8-32x.38) FEED FINGER	86		
85				2-21000-8	SCR, SHC (8-32x.62) SHEAR	85		
84				2-21000-7	SCR, SHC (8-32x.50) STRIPPER	84		
83						83		
82						82		
81				3-21000-4	SCR, SHC (10-32x.38) SG ADJ BL	81		
80				455888-3	SPACER, CRIMPER	80		
79				462992-7	GUARD ASSY	79		
78				679532-1	INSERT, GUARD	78		
77						77		
76						76		
75						75		
74				690603-1	SPRING, ASSIST	74		
73				23030-1	SCR, SHC (6-32x.25 SL) INS DISC	73		
72				4-21002-8	SCR, BHC (3/8x1.00) FEED MT	72		
71				459610-3	MOUNT, FEED BRACKET	71		
QTY	REQD	PER	ASSY	U/M	DWG SIZE	PART NO	DESCRIPTION	ITEM NO
3	2	1						



QTY	REQD	PER	ASSY	PART NO	DESCRIPTION	ITEM NO		
1	1	1				70		
1	1	1				69		
1	1	1				68		
1	1	1				67		
1	1	1				66		
1	1	1				65		
2	2	2				64		
1	1	1				63		
1	1	1				62		
21.00	21.00	IN				61		
1	1	1				60		
1	1	1				59		
1	1	1				58		
1	1	1				57		
1	1	1				56		
1	1	1				55		
1	1	1				54		
1	1	1				53		
1	1	1				52		
1	1	1				51		
1	1	1				50		
1	1	1				49		
1	1	1				48		
1	1	1				47		
1	1	1				46		
1	1	1				45		
1	1	1				44		
1	1	1				43		
1	1	1				42		
1	1	1				41		
1	1	1				40		
1	1	1				39		
1	1	1				38		
1	1	1				37		
1	1	1				36		
1	1	1				35		
1	1	1				34		
1	1	1				33		
1	1	1				32		
1	1	1				31		
1	1	1				30		
1	1	1				29		
2	2	2				28		
1	1	1				27		
1	1	1				26		
1	1	1				25		
1	1	1				24		
1	1	1				23		
1	1	1				22		
1	1	1				21		
1	1	1				20		
1	1	1				19		
1	1	1				18		
1	1	1				17		
1	1	1				16		
1	1	1				15		
1	1	1				14		
1	1	1				13		
1	1	1				12		
1	1	1				11		
1	1	1				10		
1	1	1				9		
1	1	1				8		
1	1	1				7		
1	1	1				6		
1	1	1				5		
1	1	1				4		
1	1	1				3		
1	1	1				2		
1	1	1				1		
QTY	REQD	PER	ASSY	U/M	DWG SIZE	PART NO	DESCRIPTION	ITEM NO
3	2	1						

QTY	REQD	PER	ASSY	PART NO	DESCRIPTION	ITEM NO
3	2	1				