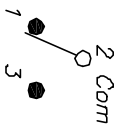


RECOMMENDED P.C.B. LAYOUT
NOT TO SCALE

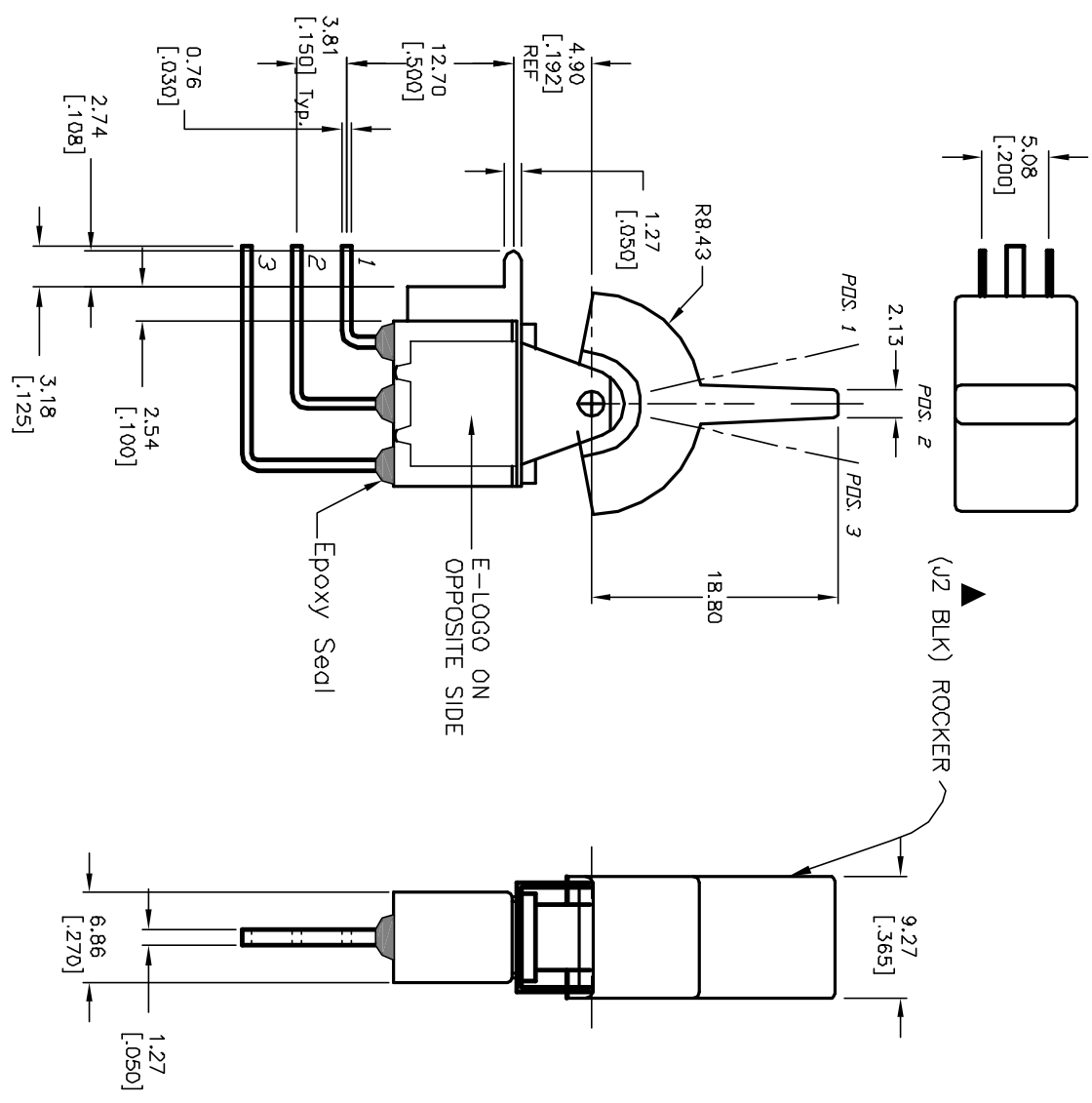


CIRCUIT: SPDT

SWITCH FUNCTION		
PDS. 1	PDS. 2	PDS. 3
(CND)	(OFF)	(CND)
2-3	OPEN	2-1

()=MENTARY

- NOTES:
1. ALL DIMENSIONS IN MM [INCH]
 2. GENERAL TOLERANCE: X.X=±0.4 X.XX=±0.25
 3. TERM. NOS. FDR REF. ONLY
 4. RATING: 0.4(VA) max. @20V (AC or DC)
 5. MATERIAL: FIXED TERMINAL & MOVING CONTACT
Copper Alloy w/GOLD plate over
Nickel plate
 6. CONTACT RESISTANCE: 10mILLI Ohms max initial @2-4VDC, 100mA for AG & AU
 7. ELECTRICAL LIFE: 50,000 make-and-break cycles at full load.
 8. INSULATION RESISTANCE: 1,000M ohm min.
 9. DIELECTRIC STRENGTH: 1000V RMS @sea level
 10. OPERATING TEMP.: -30°C to 85°C



E-SWITCH®

REV.	ECN No.	RELEASED	2/28/03	CJB	TITLE	SCALE	DATE	DR	DWG	REV
A	12866	DESCRIPTION	DATE	CHKD	300 SP-4 (J2 BLK) M7 RE (GOLD CONTACTS)	2:1	2/28/03	CJB	T314027	A
<p>THE INFORMATION CONTAINED IN THIS DOCUMENT IS PROPRIETARY TO E-SWITCH AND IS NOT TO BE COPIED OR TRANSFERRED</p>										