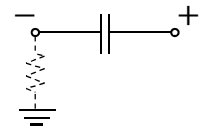


<Example>

nichicon
33 μF 400V



AS (M)
105°C
Lot. No.



CONNECTION DIAGRAM

Sleeve color: Dark Brown
Marking color: White

ELECTRICAL CHARACTERISTICS

WORKING VOLTAGE (V. D. C)	SURGE VOLTAGE (V. D. C)	RATED CAP (μ F)	CAP. TOL. (%)	tan δ (MAX)	LEAKAGE CURRENT (μ A MAX)	RIPPLE CURRENT (mArms MAX)	
400	450	33	±20	0.15	628	225	
at 120Hz 20 °C					400 V 20°C after 1min	at 120Hz 105°C	

TEST STANDARD

JIS C 5101-4

OPERATING TEMP. RANGE

-40 ~ 105°C

				NICHICON TYPE NO.			
				UAS2G330MHD			
				RATE			
				400V		33 μ F	
				3RD ANGLE PROJEC-TION	SCALE /mm	DATE	CASE SIZE
MARK	DATE	DESCRIPTIONS	APPR.			2015/11/18	φ16 × 20 L
REVISION :							

SPECIFICATION		DWG. No.		H151119h1		sheet	2
---------------	--	----------	--	------------------	--	-------	----------