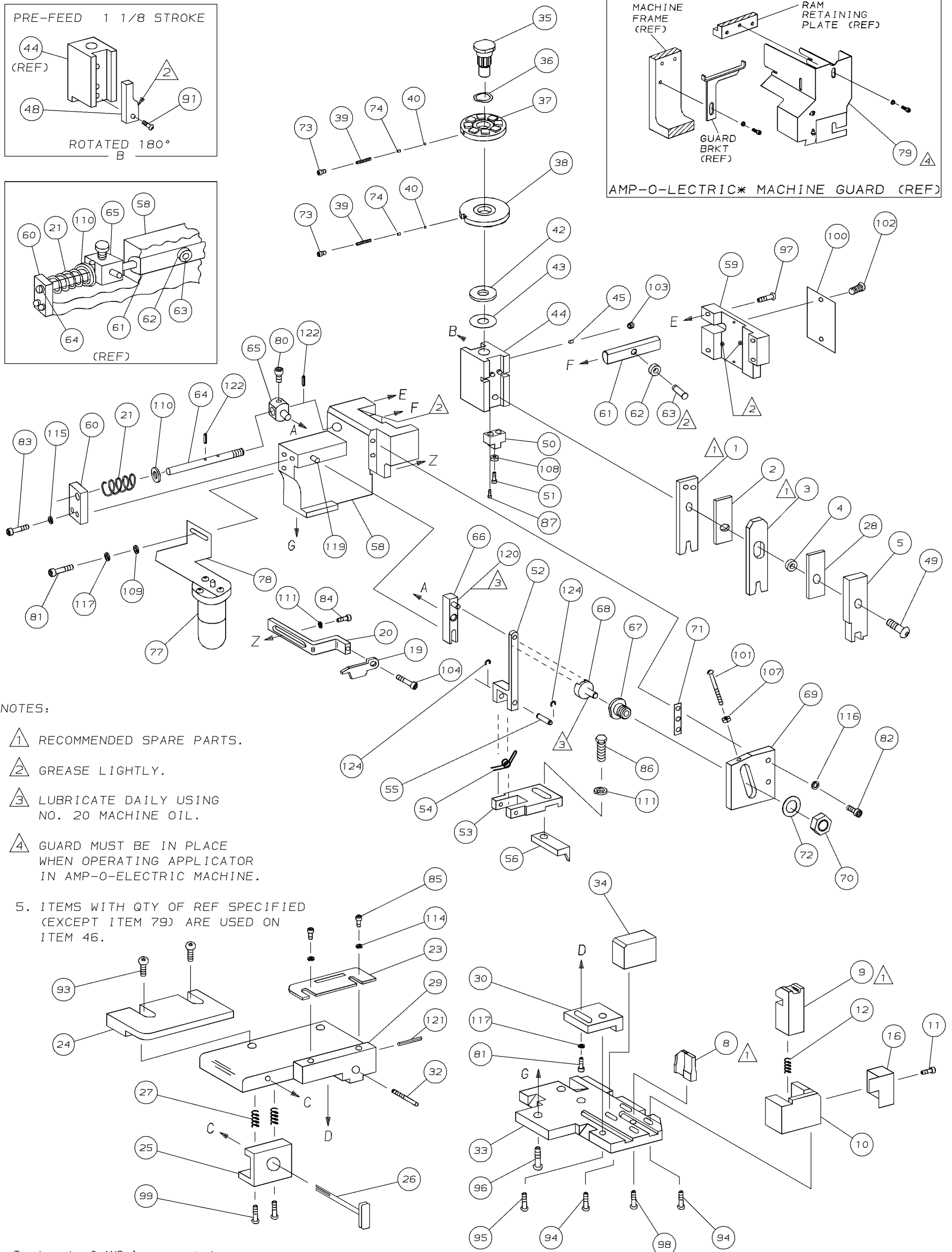
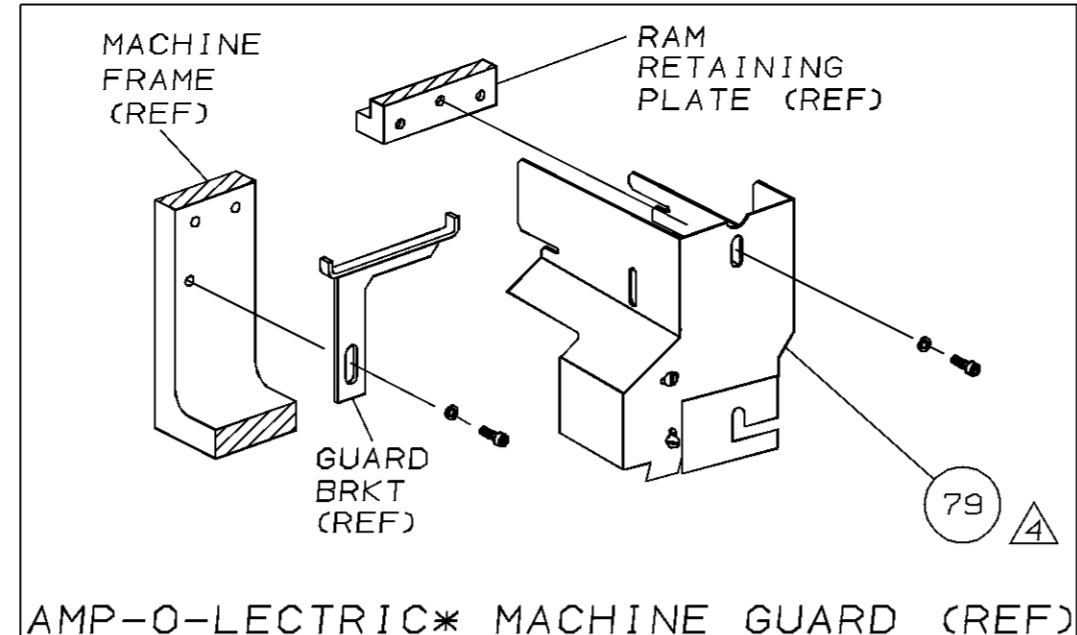
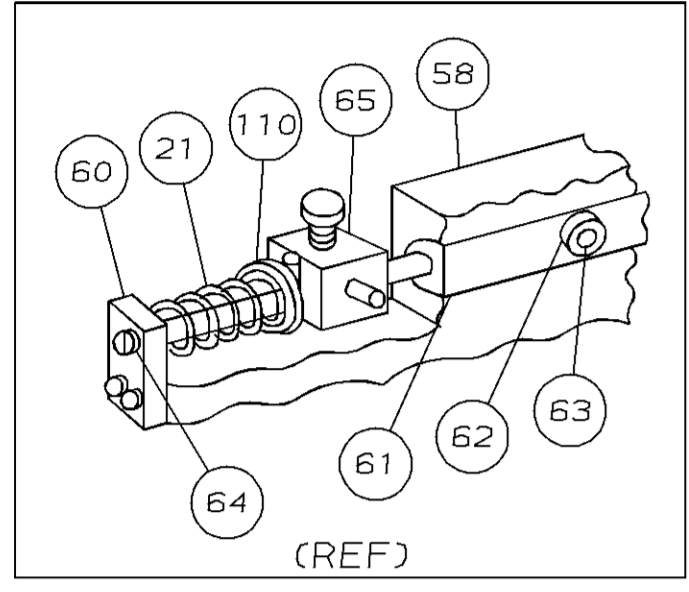
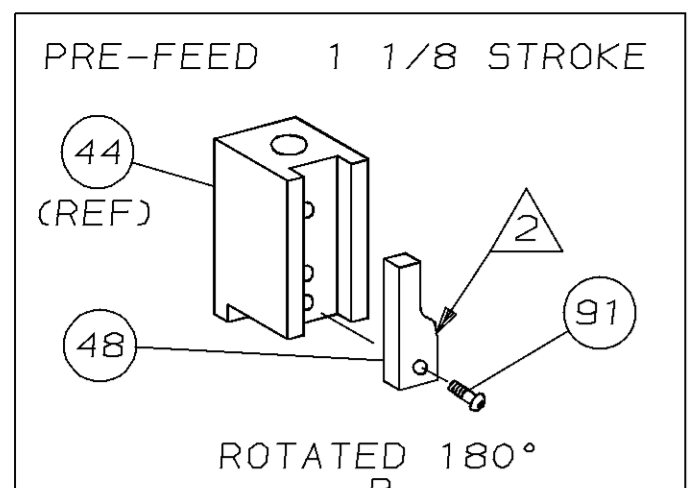


THIS DRAWING IS A CONTROLLED DOCUMENT FOR AMP INCORPORATED. IT IS SUBJECT TO CHANGE AND THE CONTROLLING ENGINEERING ORGANIZATION SHOULD BE CONTACTED FOR THE LATEST REVISION.



- NOTES:
- 1 RECOMMENDED SPARE PARTS.
 - 2 GREASE LIGHTLY.
 - 3 LUBRICATE DAILY USING NO. 20 MACHINE OIL.
 - 4 GUARD MUST BE IN PLACE WHEN OPERATING APPLICATOR IN AMP-O-ELECTRIC MACHINE.
5. ITEMS WITH QTY OF REF SPECIFIED (EXCEPT ITEM 79) ARE USED ON ITEM 46.

QTY	PART NO	DESCRIPTION	ITEM NO
2	21045-3	RING,RET "C"(1.87ø)FEED FINGER PIN	124
1	21045-3	RING,RET "C"(1.87ø)FEED FINGER PIN	123
2	5-21028-1	PIN,SLT SPR(.125øx.50)ADJ ROD	122
1	4-21028-0	PIN,SLT SPR(.093øx.75)ST GUIDE PL	121
1	1-21030-1	PIN,DOWEL (.187øx.50)LEVER	120
1	1-21030-6	PIN,DOWEL (.187øx1.25)HOUSING	119
2	21024-5	WASHER,LOCK (NO.10)ADJ BLOCK	118
2	21024-5	WASHER,LOCK (NO.10)ADJ PLATE	117
2	21024-5	WASHER,LOCK (NO.10)FEED GUIDE ROD	116
2	21024-2	WASHER,LOCK (NO.4)FRONT STRIP GUIDE	115
			114
			113
			112
			111
4	21024-4	WASHER,LOCK (NO.8)STRIPPER	110
1	21899-4	WASHER,FLAT (5/16 DIA)SCREW ADJ	109
REF	21899-2	WASHER,FLAT (NO.10)LUB ASSY	108
1	21018-5	NUT,HEX (NO.6)HOLDDOWN	107
1	21018-5	NUT,HEX (6-32)FEED ADJ	106
			105
			104
1	456567-1	SCR,SHLD (.188øx.125)STRIPPER	103
1	21009-2	SCR,SKT SET (1/4-20x.25LOC-WEL)RAM	102
2	21017-2	SCR,DRIVE (#2x.19)ID PLATE	101
1	6-23715-5	SCR,PAN HD (6-32x1.50)FEED ADJ	100
1	461264-1	PLATE, IDENTIFICATION	99
2	3-21002-0	SCR,BHC (10-32x.88)DRAG	98
1	22733-8	SCR,BHC (8-32x.38LOC-WEL)ANVIL	97
4	2-21002-9	SCR,BHC (10-32x.75)CAP	96
3	2-22733-8	SCR,BHC (1/4-20x.62)HOUSING	95
1	2-21002-7	SCR,BHC (10-32x.50)SG ADJ BLOCK	94
2	2-21002-2	SCR,BHC (8-32x.50)SHEAR	93
2	2-21000-6	SCR,BHC (8-32x.38)R STRIP GUIDE	92
			91
1	1-21002-7	SCR,BHC (6-32x.38)CAM	90
			89
			88
			87
2	1-21000-6	SCR, SET CAP 4-40 X .62	86
1	2-22603-0	SCR,HEX HEAD (8-32x.31)FEED FINGER	85
2	1-21000-3	SCR,SKT CAP (4-40x.25)F STRIP GUIDE	84
1	2-21000-7	SCR,SKT CAP (8-32x.50)STRIPPER	83
2	3-21000-7	SCR,SKT CAP (10-32x.75)FEED ROD GD	82
2	3-21000-6	SCR,SKT CAP (10-32x.62)FEED ADJ BLK	81
2	3-21000-4	SCR,SKT CAP (10-32x.38)SG ADJ BL	80
REF	455749-1	GUARD, WINDOW	79
1	1-465184-0	LUBRICATOR ASSY	78
			77
			76
			75
			74
			73
			72
			71
			70
			69
			68
			67
			66
			65
			64
			63
			62
			61
			60
			59
			58
			57
			56
			55
			54
			53
			52
			51
			50
			49
			48
			47
			46
			45
			44
			43
			42
			41
			40
			39
			38
			37
			36
			35
			34
			33
			32
			31
			30
			29
			28
			27
			26
			25
			24
			23
			22
			21
			20
			19
			18
			17
			16
			15
			14
			13
			12
			11
			10
			9
			8
			7
			6
			5
			4
			3
			2
			1

REMARKS		NO	REV
APPL USED ON MACHINE PART NO		DISTRIBUTION	
CUSTOMER NAME		ORIGINAL	
ADDRESS		CUSTOMER COPY	
CITY		FIELD ENG COPY	

CRIMP	SIZE	TYPE	FEED	APPL INST
WIRE	.054	F	.350	A1 8040
INSUL	.080	0		

WIRE RANGE	INSULATION RANGE	MACHINE NO
26-22	.028-.054	565435-5

AMP-O-ELECTRIC
PRE-FEED

* (2)26 OR (2)29 WIRES MAY BE USED AT THIS CRIMP HEIGHT

SET UP GAGE	10-1
458637-1	L1322
DR 11/14/89	APP 4-29-94
N. O'BRIEN	T. BERTON
CHK 11/27/89	REL 3-3-90
C. ERISMAN	B. MCPHERSON

LOC	NO	REV
A	D	567313-2

AMP INCORPORATED
Harrisburg, Pa.

MINIATURE QUICK CHANGE APPLICATOR
SIDE FEED (SERPENT)