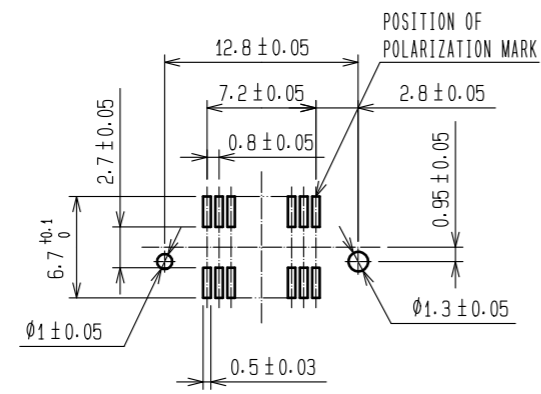
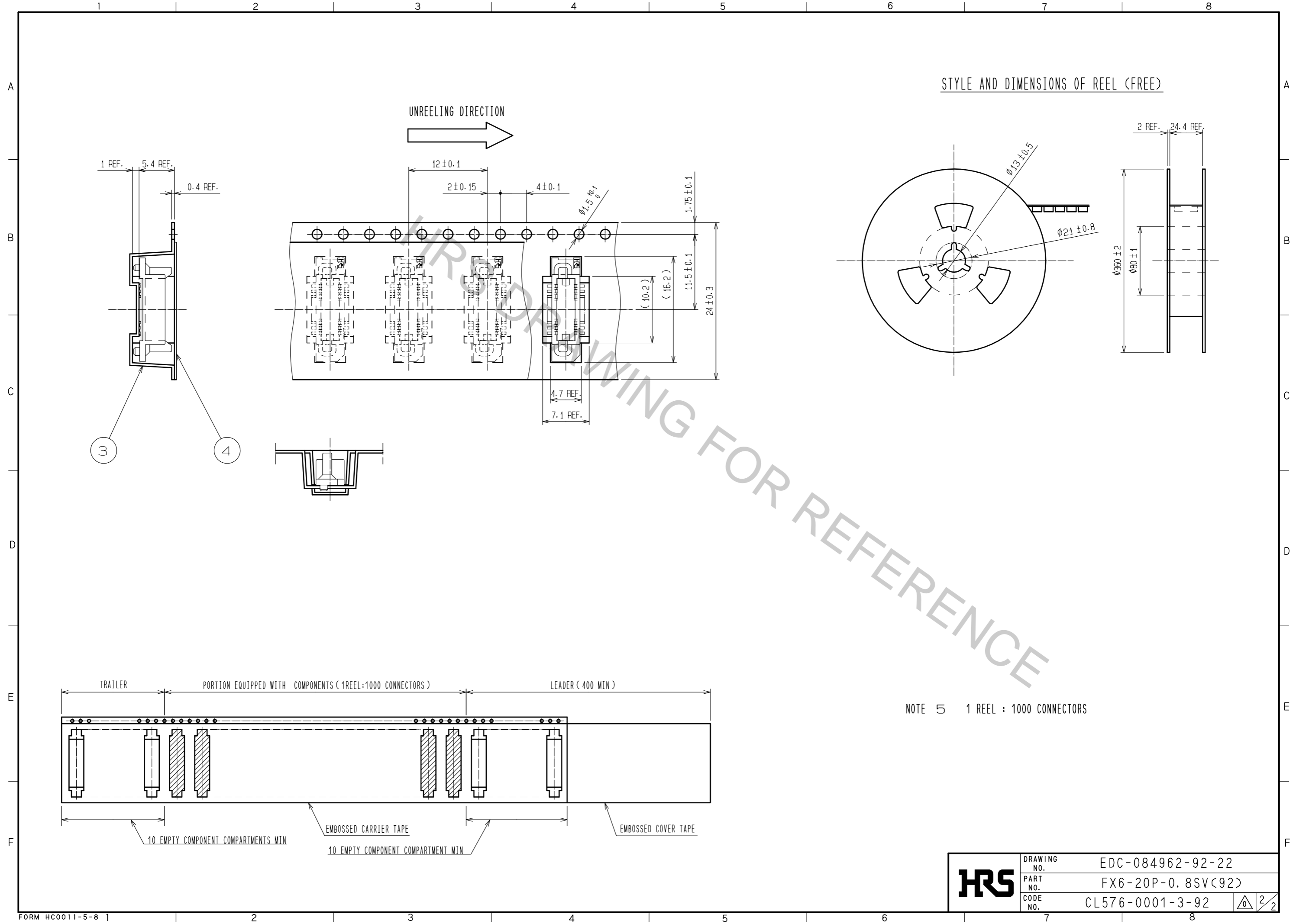


RECOMMENDED P. C. B LAND PATTERN (MOUNT SIDE)  
(RECOMMENDED METAL MASK THICKNESS: t=0.15)



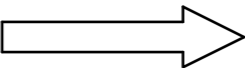
- NOTE
- ① HRS MARK SHALL BE OPTIONL.
  - ② LEAD CO-PLANARITY SHALL BE 0.1 MAX.
  - ③ EMBOSSED CARRIER TAPE PACKAGING SHALL BE APPLIED FOR THIS PRODUCT.
  - ④ FOR MODIFICATION, ETC. PREVENTIVE HOLE FOR SINK MARK MAY BE ADDED ACCORDING TO CIRCUMSTANCES.

1	POLYPHENYLENE SULFIDE	LIGHT BROWN	UL94V-0	4	POLYESTER	COVER TAPE			
				3	POLYSTYRENE	EMBOSSED CARRIER TAPE			
				2	PHOSPHOR BRONZE	CONTACT AREA: GOLD 0.1 μm MIN LEAD AREA: GOLD 0.05 μm MIN UNDER PLATING: NICKEL 1 μm MIN			
NO.	MATERIAL	FINISH	REMARKS	NO.	MATERIAL	FINISH	REMARKS		
UNITS	mm	SCALE	2 : 1	COUNT	DESCRIPTION OF REVISIONS		DESIGNED	CHECKED	DATE
<b>HRS</b> HIROSE ELECTRIC CO., LTD.		APPROVED	: HS. OKAWA	15.07.17	DRAWING NO.		EDC-084962-92-22		
		CHECKED	: HT. YAMAGUCHI	15.07.17	PART NO.		FX6-20P-0.8SV(92)		
		DESIGNED	: MT. ITANO	15.07.17	CODE NO.		CL576-0001-3-92		
		DRAWN	: KN. YAMAZAKI	15.07.16					



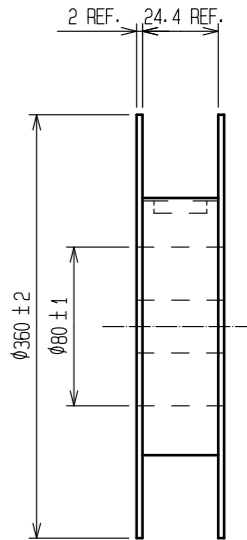
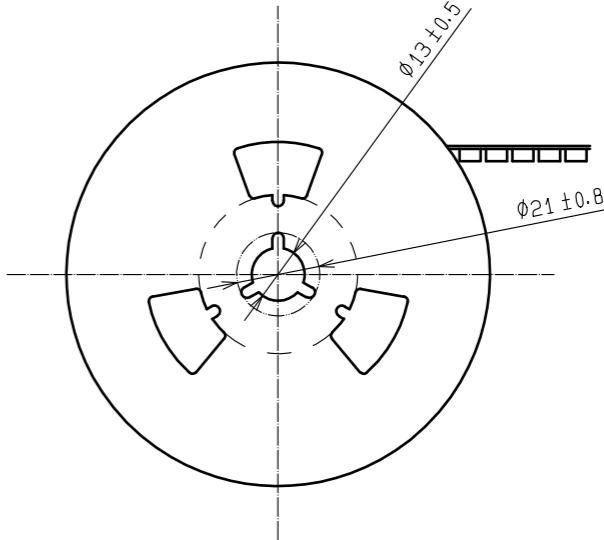
STYLE AND DIMENSIONS OF REEL (FREE)

UNREELING DIRECTION

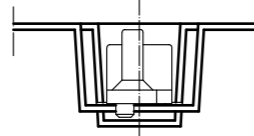


1 REF.  
5.4 REF.  
0.4 REF.

12 ± 0.1  
2 ± 0.15  
4 ± 0.1  
1.75 ± 0.1  
11.5 ± 0.1  
24 ± 0.3

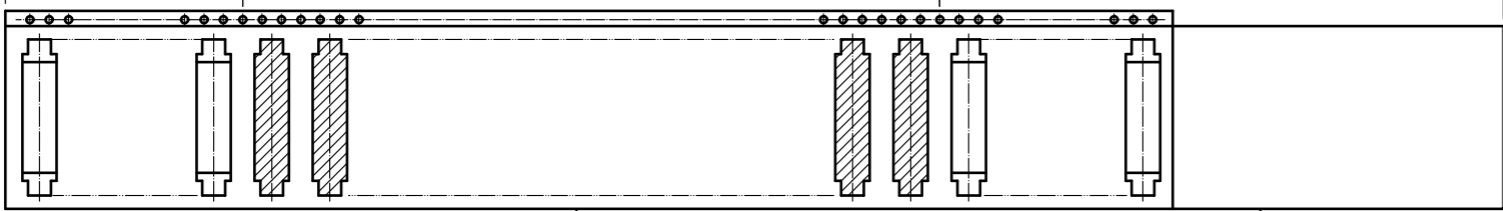


3  
4



4.7 REF.  
7.1 REF.

TRAILER      PORTION EQUIPPED WITH COMPONENTS (1 REEL: 1000 CONNECTORS)      LEADER (400 MIN)



10 EMPTY COMPONENT COMPARTMENTS MIN

EMBOSSED CARRIER TAPE

10 EMPTY COMPONENT COMPARTMENT MIN

EMBOSSED COVER TAPE

NOTE 5 1 REEL : 1000 CONNECTORS

<b>HRS</b>	DRAWING NO.	EDC-084962-92-22
	PART NO.	FX6-20P-0.8SV(92)
	CODE NO.	CL576-0001-3-92
		2/2