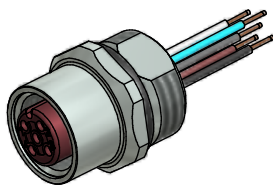


Contact assignment:

- 1) brown
- 2) white
- 3) blue
- 4) black
- 5) grey



Technical specification:

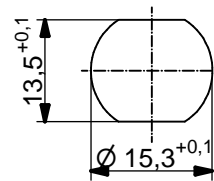
Rated voltage: IEC 61076-2-101	60 V
Current rating: IEC 61076-2-101	4 A at 40°C
Insulation resistance: IEC 60512	>=100 MΩ
Pollution degree: IEC 60664-1	3/2
Degree of protection: IEC 60529	IP 67, in mated condition
Temperature range: IEC 60664-1	+100°C - 30.000h +125°C - 8.000h +150°C - 2.000h
Mating cycles: IEC 60512-9a	>=100

Materials:

Contact:	CuZn, CuBe
Contact plating:	Nickel, gold plated
Contact carrier:	PBT GF, UL 94
Sealing:	FPM
Socket housing:	CuZn, nickel plated
Grouting:	Polyurethane-resin, UL 94

Installation specification:

recommended torque:	1-1,2 Nm
Conec installation tool:	Torque wrench: 36-000200 Insert across flats 17: 36-000230



Minimum wall thickness 1,5mm,
alternativ panel cut-out d=15,3

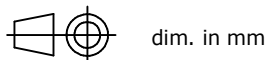
Part no:	Description:	Pos	Length L:	Wire:
43-01077	SAL - HT - 12 - FK5.1 - 0,5 - 9	5	0,5m	Copolymer, UL AWG 24
43-xxxxx	SAL - HT - 12 - FK5.1 - ... - 9	5	x	

DO NOT ALTER CAD DRAWING BY HAND
Directive 2002/95/EC RoHS compliant

Index: b 01.09.10 fro Ä3696
specification of wires changed, data sheet revised

tolerance of wire: L ≤ 0,5m: L + 20mm
L > 0,5m: L + 4%

THIS DRAWING MAY NOT BE COPIED OR REPRODUCED IN ANY WAY, AND MAY NOT BE PASSED ON TO A THIRD PARTY WITHOUT WRITTEN PERMISSION.
OWNERSHIP AND COPYRIGHT OF CONEC GmbH



	date	name
drawn	20.02.07	Fromm
appd.	05.03.07	Mankopf



title:
**Female socket M12x1 with wires,
frontmountign, HT, PG9**

dwg no:

43K1A319

part no: