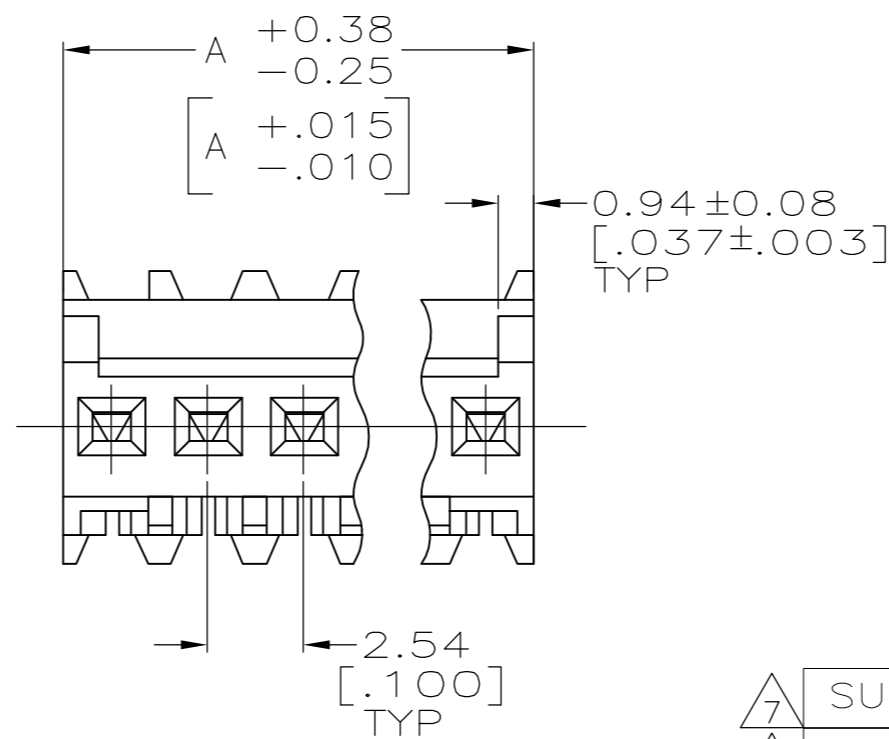
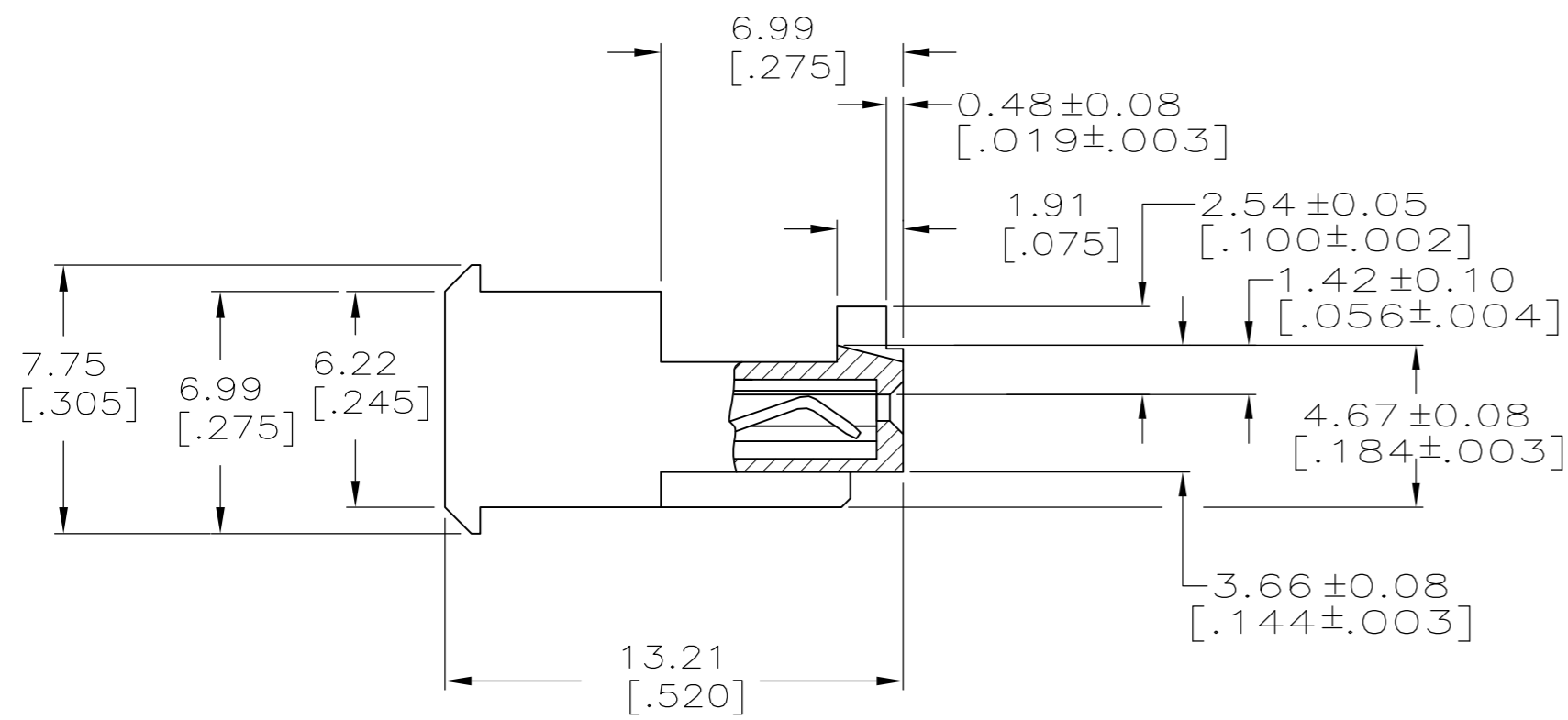
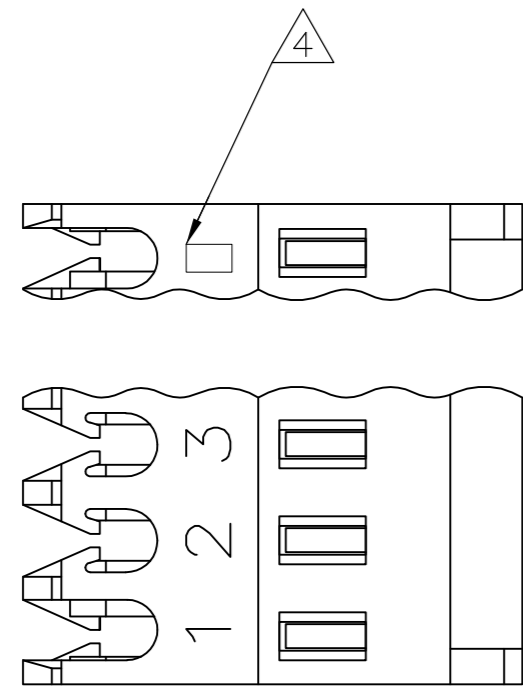


THIS DRAWING IS UNPUBLISHED. RELEASED FOR PUBLICATION  
 © COPYRIGHT - By - ALL RIGHTS RESERVED.

LOC	DIST	REVISIONS					
		P	LTR	DESCRIPTION	DATE	DWN	APVD
CM	00	B2		REVISED PER ECO-11-014117	18JUL11	HMR	SM



LEAD	LEAD	LEAD	LEAD
38.10	[1.500]	15	4-644578-5
35.56	[1.400]	14	4-644578-4
33.02	[1.300]	13	4-644578-3
30.48	[1.200]	12	4-644578-2
27.94	[1.100]	11	4-644578-1
25.40	[1.000]	10	4-644578-0
22.86	[.900]	9	3-644578-9
20.32	[.800]	8	3-644578-8
17.78	[.700]	7	3-644578-7
15.24	[.600]	6	3-644578-6
12.70	[.500]	5	3-644578-5
10.16	[.400]	4	3-644578-4
7.62	[.300]	3	3-644578-3
5.08	[.200]	2	3-644578-2

**MATERIAL:** CONNECTOR-NYLON UL94V-0 (BLACK)  
 CONTACTS-0.30 [.012] THICK COPPER ALLOY  
 BRIGHT TIN-LEAD 0.00203 [.000080] MIN THICK FOR CONTACTS  
 644578-2 THRU 1-644578-5  
 MATTE WHISKER MITIGATED TIN PLATE 0.00203 [.000080] MIN THICK  
 OVER 0.00076 [.000030] MIN THICK NICKEL FOR CONTACTS  
 3-644578-2 THRU 4-644578-5

2. CONTACTS ACCEPT 22 AWG WIRE WITH 1.52 [.060] MAX INSULATION DIAMETER.

3. CONTACTS MUST ACCEPT 0.64±0.03 [.025±.001] SQUARE POST AND REMAIN LOCKED IN POSITION.

4. IDENTIFICATION NUMBER FOR LAST CIRCUIT MAY NOT APPEAR ON ALL ASSEMBLIES.

5. DIMENSIONS IN BRACKETS ARE IN INCHES.

6. HOUSING FEATURES ARE: FEED THRU WITH LOCKING RAMP AND WITH POLARIZING TAB.

7. OBSOLETE PARTS: OBSOLETE CIS STREAMLINING PER D.RENAUD/D.SINISI

**7** SUPERSEDED  
**7** SUPERSEDED

**7** SUPERSEDED

**7** SUPERSEDED  
 OBSOLETE

CONTAINS LEAD	CONTAINS LEAD	CONTAINS LEAD	CONTAINS LEAD
38.10	[1.500]	15	<del>4-644578-5</del>
35.56	[1.400]	14	<del>4-644578-4</del>
33.02	[1.300]	13	<del>4-644578-3</del>
30.48	[1.200]	12	<del>4-644578-2</del>
27.94	[1.100]	11	<del>4-644578-1</del>
25.40	[1.000]	10	<del>4-644578-0</del>
22.86	[.900]	9	<del>3-644578-9</del>
20.32	[.800]	8	<del>3-644578-8</del>
17.78	[.700]	7	<del>3-644578-7</del>
15.24	[.600]	6	<del>3-644578-6</del>
12.70	[.500]	5	<del>3-644578-5</del>
10.16	[.400]	4	644578-4
7.62	[.300]	3	<del>644578-3</del>
5.08	[.200]	2	<del>644578-2</del>

DIM A NO.OF POSN ASSEMBLY



THIS DRAWING IS A CONTROLLED DOCUMENT.

DIMENSIONS: mm [INCHES]	TOLERANCES UNLESS OTHERWISE SPECIFIED:	DWN S. HOOVER 03-DEC-2004	TE Connectivity
0 PLC ±	1 PLC ±	CHK D. BOSSI 03-DEC-2004	
2 PLC ± 0.13 [.005]	3 PLC ±	APVD D. BOSSI 03-DEC-2004	MTA .100 CONNECTOR ASSEMBLY 22 AWG, UL94V-0, SPECIAL
4 PLC ANGLES ±	FINISH	PRODUCT SPEC 108-1050	
MATERIAL		APPLICATION SPEC 114-1019	SIZE A2
		WEIGHT	CAGE CODE 00779
		CUSTOMER DRAWING	DRAWING NO C=644578
			RESTRICTED TO
			SCALE 5:1 SHEET 1 OF 1 REV B2