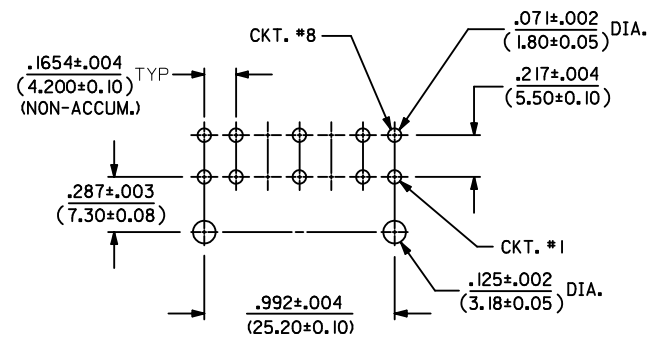
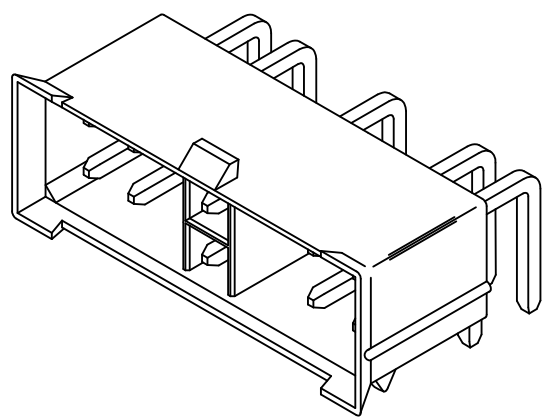


NOTES:

- 1) HOUSING MATERIAL: NYLON 6/6, U.L. 94V-0, COLOR: NATURAL.
TERMINAL MATERIAL: BRASS, ALLOY
- 2) FINISH:
.000100/(0.00254) MIN. MATTE TIN OVER
.000050/(0.00127) MIN. NICKEL
- 3) PRODUCT SPECIFICATION: PS-5556-002
- 4) PACKAGING SPECIFICATION: BULK
- 5) PART MATES WITH MINI-FIT JR. RECEPTACLES #5557 AND #42385.
- 6) PART ALLOWS FOR .050/(1.27) MAXIMUM MISALIGNMENT WITH MATING RECEPTACLE IN ANY DIRECTION.
- 7) CIRCUITS 4 & 11 PROVIDE THE 'MATE-FIRST BREAK-LAST' FEATURE IN THIS CONNECTOR.
- 8) FORMING MARKS ARE ACCEPTABLE
- 9) CONNECTOR ASSEMBLIES ARE NOT TO BE MATED OR UNMATED WHILE CIRCUITS ARE LIVE.
- 10) DISCOLORATION IN THE BANDOLIER CARRIER AREA OF THE PIN IS INHERENT TO THE PLATING PROCESS AND IS DUE TO THE MASKING EFFECT OF THE CARRIER. THIS DISCOLORATION IS IN A NON-FUNCTIONAL AREA OF THE PIN AND WILL NOT AFFECT THE PERFORMANCE OF THE HEADER ASSEMBLY.
- 11) PART IS NOT DESIGNED FOR CURRENT SHARING

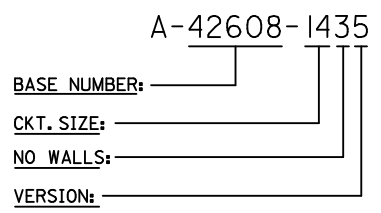


RECOMMENDED HOLE LAYOUT FOR .070/(1.78) MAX. THICK P.C. BOARD



SCALE 4:1

LEGEND:



CHANGE PLATING EC NO: UCP2012-1560 DRW: NGUYEN 2012/01/17 CHKD: BELL 2012/01/17 APPR: FSMITH 2012/02/02	QUALITY SYMBOLS	GENERAL TOLERANCES (UNLESS SPECIFIED)	DIMENSION STYLE	SCALE	DESIGN UNITS	THIRD ANGLE PROJECTION
	▽=0	mm INCH	IN/MM	2:1	METRIC	☉
	▽=0	4 PLACES ± --- ± ---	DRAWN BY DATE	TITLE		
	▽=0	3 PLACES ± --- ± .010	CHECKED BY DATE	.050 LEAD-IN, NO WALLS, RT.ANGLE HEADER ASS., MAKE-FIRST/BREAK-LAST		
		2 PLACES ± .25 ± .015	RJF 1993/11/15	MOLEX INCORPORATED		
		1 PLACE ± .38 ± ---	APPROVED BY DATE	MATERIAL NO. 42608-1435 DOCUMENT NO. SDA-42608-1435 SHEET NO. 1 OF 1		
		ANGULAR ± 5 °	THIS DRAWING CONTAINS INFORMATION THAT IS PROPRIETARY TO MOLEX INCORPORATED AND SHOULD NOT BE USED WITHOUT WRITTEN PERMISSION			