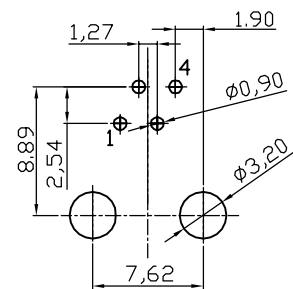
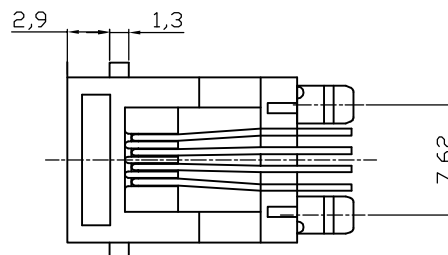


SECTION A-A



PC Board layout  
Component Side Shown



**NOTES:**

**ELECTRICAL:**

- 1. VOLTAGE RATING : 125 VAC RMS MIN.
- 2. CURRENT RATING : 1.5 AMP MIN.
- 3. CONTACT RESISTANCE : 30 MILLIOHMS MAX.
- 4. INSULATION RESISTANCE : 1000 MEGOHMS MIN @ 500 VDC.
- 5. DIELECTRIC STRENGTH : 750 VAC RMS 50Hz, 1MIN.

**MECHANICAL:**

- 1. HOUSING MATERIAL : HIGH TEMP. UL94V-0
- 2. CONTACT MATERIAL : PHOSPHOR BRONZE  $\phi=0.46\text{mm}$
- 3. PLATING : 6u" GOLD PLATING OVER NICKEL.
- 4. OPERATING LIFE : 750 CYCLES MIN.
- 5. PCB RETENTION PRE-SOLDER : 1 LB MIN.
- 6. PCB RETENTION POST-SOLDER: 10 LBS MIN.

**ENVIRONMENTAL:**

- 1. STORAGE : -40°C TO +85°C.
- 2. OPERATION: -40°C TO +85°C.

**RoHS compliant**

Unit: mm



File No.: E345352

Scale	1:1					Date	Name	Customer-No.
TOLERANCE						Drawn	05.11.2008	N.Schulz
.X	±0.20					Approved	02.07.2009	Hellwig
.XX	±0.15							
.XXX	±0.10							
DIM	TOL	②	Update	02.07.2009	Dean			
Angle	±5°	①	Drawn	05.11.2008	N.Schulz			
		Id.	Modification	Date	Name			

Customer-No.		
ASSMANN WSW-No.		A-20140
Drawing-No.	ASS 2885 CO	rev02
Replace	ASS 0703 CO	SHEET