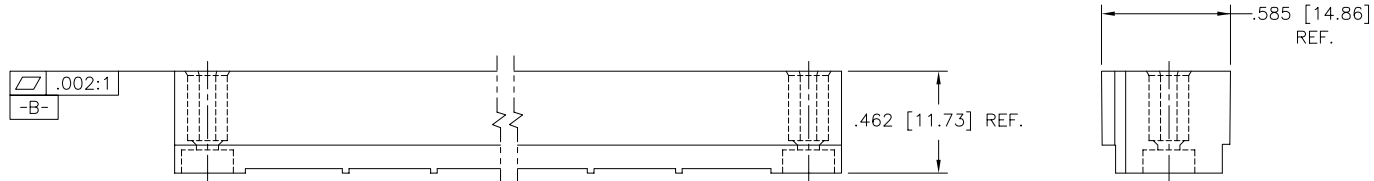
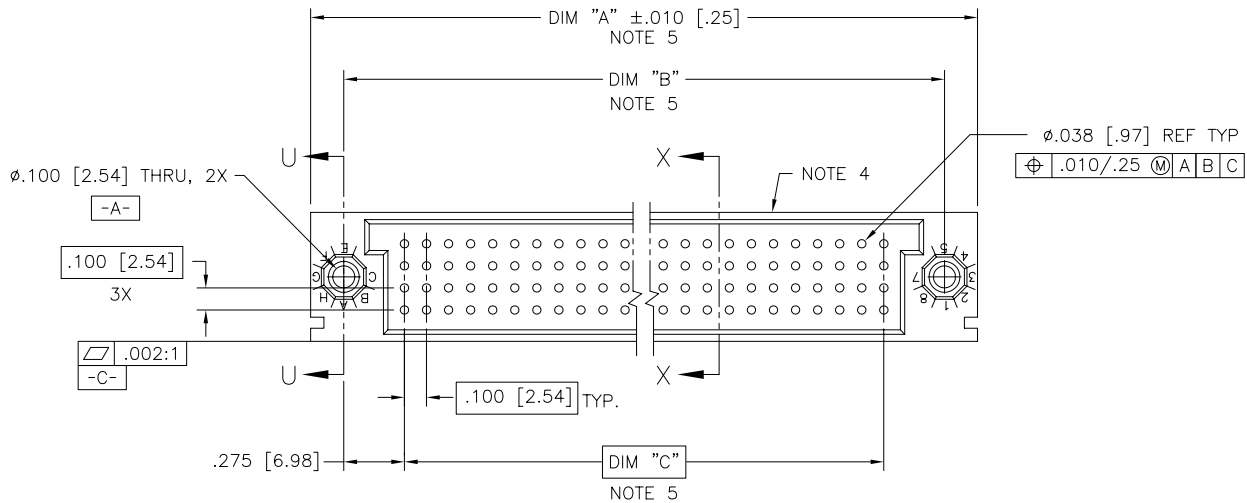


PRODUCT NUMBER
SEE NOTE 1



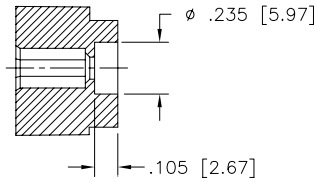
FCI
FCIconnect.com

Copyright FCI

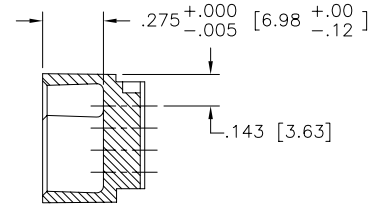
| | | | | | | | | | |
|---------------------------|----------|-----------------------|----------|----------------------------------|------------|---------------------------------------|-----------|-----------------------|---|
| mat'l. code SEE NOTE 3 | | surface ISO 1302 ✓ | | tolerance ISO 406 ISO 1101 | | projection ⊕ | | product family HPC | |
| ltr | | ecn no | | date | | tolerances unless otherwise specified | | title | |
| A | v12795 | RDS | 10/24/91 | angles | linear | .xx±.01/.3 | INCH/MM | | VERTICAL SHROUD 4 ROW W/O GUIDE PINS |
| B | v20224 | MRC | 3/2/92 | | | .xxx±.005/.13 | scale 1:1 | | |
| C | v23049 | SAR | 7/24/92 | 0'±2' | | .xxxx±.0020/.051 | | | |
| D | v41077 | GAH | 7/6/94 | dr | D.SHEAFFER | 8/7/91 | FCI | | dwg no |
| E | v94441 | JWS | 12/30/99 | enr | S.CLARK | 10/24/91 | | | sheet 1 of 2 size |
| F | v05-0967 | DAI | 10/20/05 | chr | S.CLARK | 10/24/91 | | | 50437 A3 |
| G | M06-0283 | MHT | 7/27/06 | appd | S.CLARK | 10/24/91 | | | type Product Customer Drawing |
| sheet index | revision | G | G | | | | | | |
| | sheet | 1 | 2 | | | | | | |

form: A3

PRODUCT NUMBER
SEE NOTE 1



SECTION U-U



SECTION X-X

NOTES:

1. PRODUCT NUMBERING CODE:

| | | | | | |
|-------|----|-----|---|----|-----------------------------|
| 50437 | -X | YYY | X | LF | |
| | | | | | LEAD FREE (OPTIONAL) |
| | | | | | ALWAYS "X" |
| | | | | | NO. OF POSITIONS SEE NOTE 2 |
| | | | | | ALWAYS "X" |
| | | | | | BASE NUMBER |
2. THIS PRODUCT IS CONFIGURED IN SIZES OF 6 THRU 80 COLUMNS IN INCREMENTS OF ONE.
i.e.: 6, 7, 8, 9,.....79, 80.
3. MATERIAL: GLASS AND MINERAL FILLED THERMOPLASTIC. FLAME RETARDANT PER UL94 V-0. COLOR: BLACK.
4. MANUFACTURE'S NAME, P/N, AND LOT CODE TO APPEAR ON THIS SURFACE.
5. LENGTH FORMULAS
 DIM A= .100/2.54 x NO. OF COLUMNS + .75/19.1
 DIM B= .100/2.54 x NO. OF COLUMNS + .450/11.43
 DIM C= .100/2.54 x NO. OF COLUMNS - .100/2.54
6. THIS PRODUCT (WITH "LF" SUFFIX) MEETS EUROPEAN UNION DIRECTIVES AND OTHER COUNTRY REGULATIONS AS DESCRIBED IN GS-22-008.
7. THIS HOUSING WILL WITHSTAND EXPOSURE TO 260° C PEAK TEMPERATURE FOR 10-30 SECONDS IN A CONVECTION, INFRA-RED OR VAPOR PHASE OVEN.

FCJ
 FCJconnect.com
 Copyright FCJ

| | | | | | | | | | |
|---------------------------|--|---------------------------------------|--|----------------------------------|--|-----------------|--|--|--|
| mat'l. code SEE NOTE 3 | | surface ISO 1302 ✓ | | tolerance ISO 406 ISO 1101 | | projection ⊕ | | product family HPC | |
| ltr G | | ecn | | no dr | | date | | title VERTICAL SHROUD 4 ROW W/O GUIDE PINS | |
| | | tolerances unless otherwise specified | | | | INCH/MM | | scale 1:1 | |
| | | angles | | linear | | | | dwg no 50437 | |
| | | 0°±2' | | | | | | sheet 2 of 2 size A3 | |
| | | dr | | D.SHEAFFER | | 8/7/91 | | type Product Customer Drawing | |
| | | enr | | S.CLARK | | 10/24/91 | | | |
| | | chr | | S.CLARK | | 10/24/91 | | | |
| | | appd | | S.CLARK | | 10/24/91 | | | |
| sheet index | | revision sheet | | | | | | | |