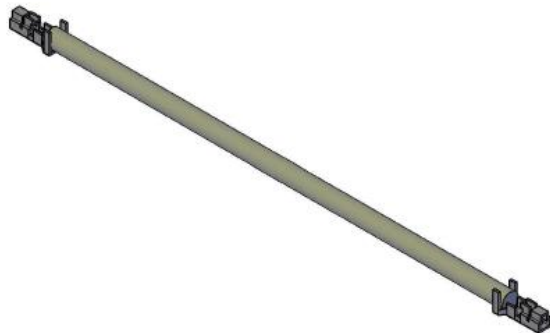
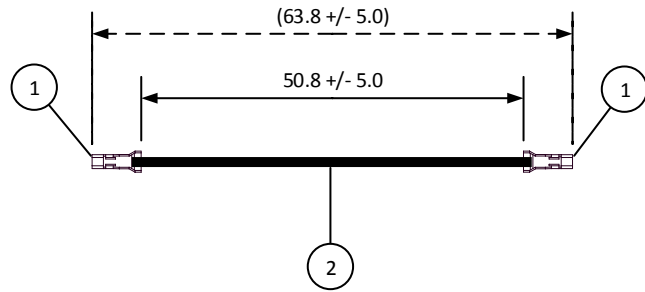


4		3		2		1	
ITEM	CONNECTOR PART NO.	DESCRIPTION	IPI CHECK	EOR CHECK	Applicable Tooling		
1	SXA-01T-P0.6	XA CONNECTOR CONTACT			APPLICATOR		
2	UL1007, 22 AWG	BLACK					

### Applicable Housings

NO. OF CIRCUITS	HOUSING PART NO.
2	XAP-02V-1
3	XAP-03V-1
4	XAP-04V-1
5	XAP-05V-1
6	XAP-06V-1
7	XAP-07V-1
8	XAP-08V-1
9	XAP-09V-1
10	XAP-10V-1
11	XAP-11V-1
12	XAP-12V-1
13	XAP-13V-1
14	XAP-14V-1
15	XAP-15V-1
20	XAP-20V-1



SCALE	CUSTOMER NAME	CUSTOMER PART NO.
1: 1		
DIMENSIONS	DESCRIPTION	
All dimensions are in MM with a tolerance of +/- 3.0 unless otherwise specified.	2.5 mm Pitch XA Series Standard Leads - 2" Inside Length DOUBLE-END LEADS, F-F	
DRAWN BY	ASSEMBLY PART NO.	
STEVEN PILKINGTON	ASXASXA22K51	
CHECKED BY	DRAWING NO. & REVISION	REVISED
JUSTIN BAKER	GAM-070	3/9/2016

REV.	DESCRIPTION	DATE	BY

4

3

2

1