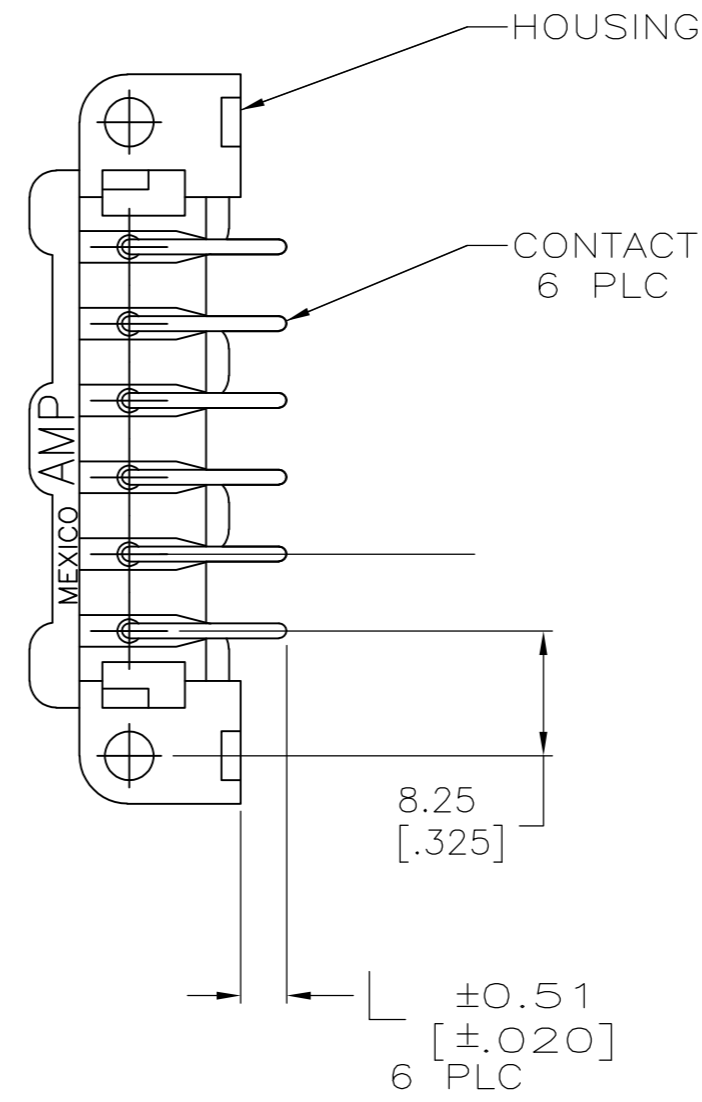
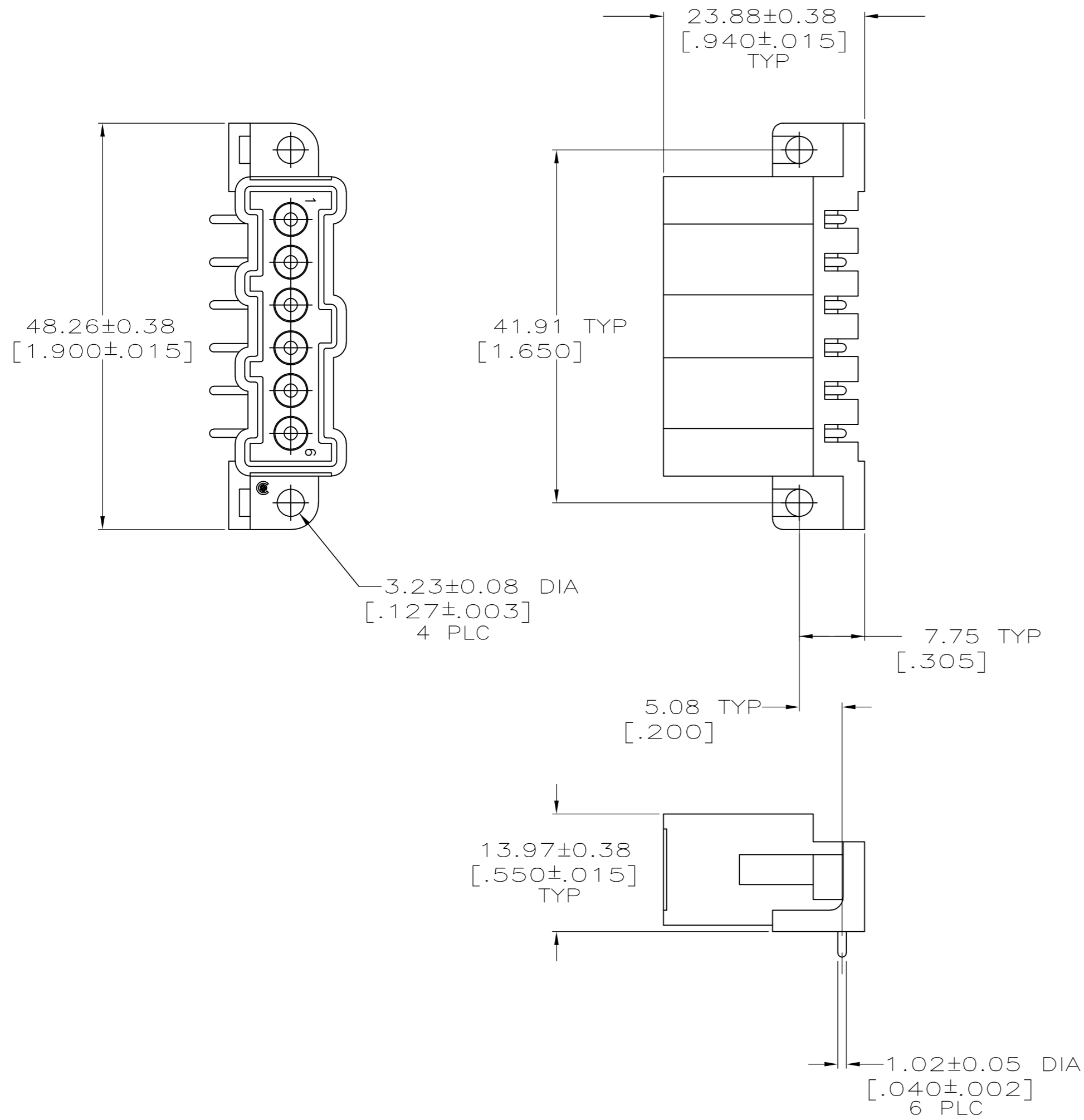


THIS DRAWING IS UNPUBLISHED. RELEASED FOR PUBLICATION  
 © COPYRIGHT BY TYCO ELECTRONICS CORPORATION. ALL RIGHTS RESERVED.

LOC	DIST	REVISIONS					
FT	0	P	LTR	DESCRIPTION	DATE	DWN	APVD
		G		REVISED PER 0G3B-0168-05	3/10/05	SS	GS
		G1		REVISED PER ECO-09-021826	12JAN10	KK	AEG



- ① THERMOPLASTIC, RED.
- ② BRASS PER ASTM B36.
- ③ 3.81um [.000150] MIN TIN-LEAD OVER 2.54um [.000100] MIN COPPER.
- ④ 3.81um [.000150] MIN TIN OVER 2.54um [.000100] MIN COPPER.
- ⑤ OBSOLETE PARTS: OBSOLETE CIS STREAMLINING PER D.RENAUD/D.SINISI

CONTACT FINISH	L	PART NUMBER
⑤ OBSOLETE	④	12.83 [.505]
	④	3.05 [.120]
	③	12.83 [.505]
	③	3.05 [.120]

THIS DRAWING IS A CONTROLLED DOCUMENT.		DWN J.MCCLINTON 11/06/91	Tyco Electronics Corporation Harrisburg, Pa 17105-3608	
DIMENSIONS: mm [INCHES]		CHK R. STONE 11-8-91	NAME	
TOLERANCES UNLESS OTHERWISE SPECIFIED:		APVD -	PRODUCT SPEC	
0 PLC ± - 1 PLC ± - 2 PLC ± 0.25 [.010] 3 PLC ± - 4 PLC ± - ANGLES ± -		APPLICATION SPEC	HEATER ASSEMBLY, PIN, 6 POSITION, METRIMATE	
MATERIAL HOUSING: ①	FINISH CONTACTS: SEE TABLE	WEIGHT -	SIZE A2	CAGE CODE 00779
CONTACTS: ②		CUSTOMER DRAWING	DRAWING NO C=208116	RESTRICTED TO -
			SCALE 2:1	SHEET 1 OF 1
			REV G1	