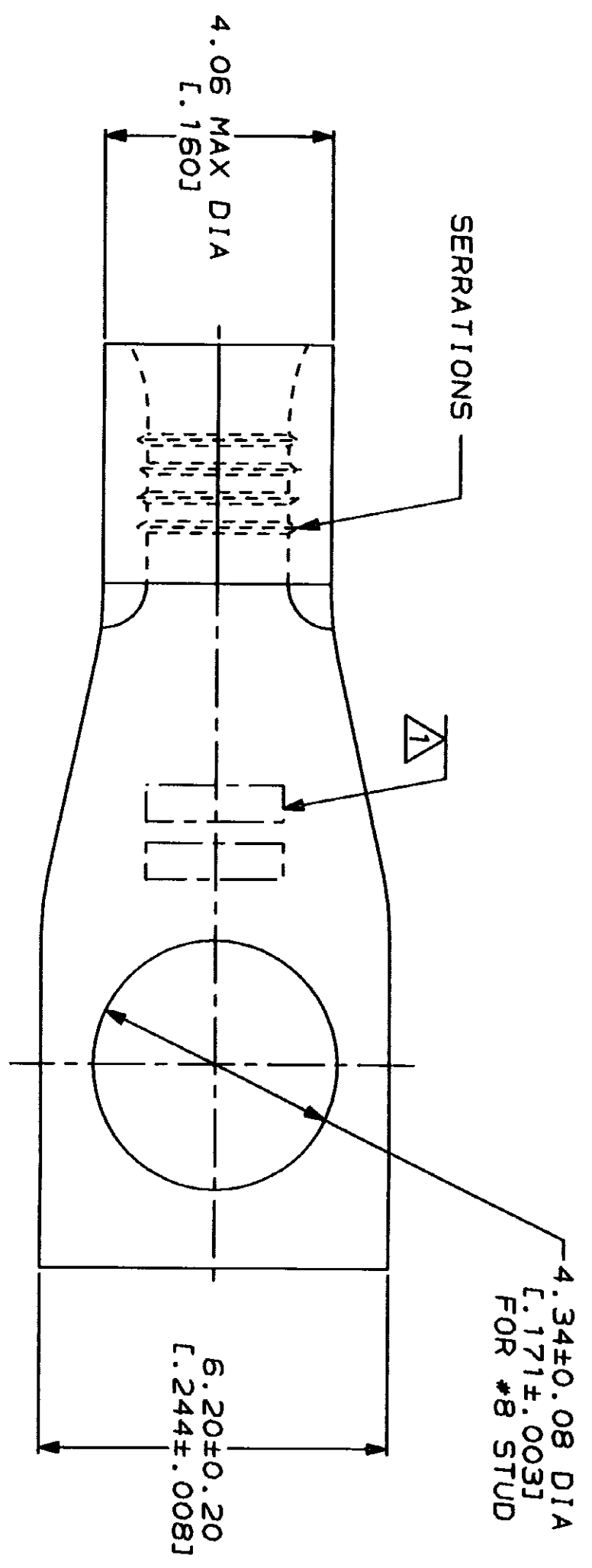


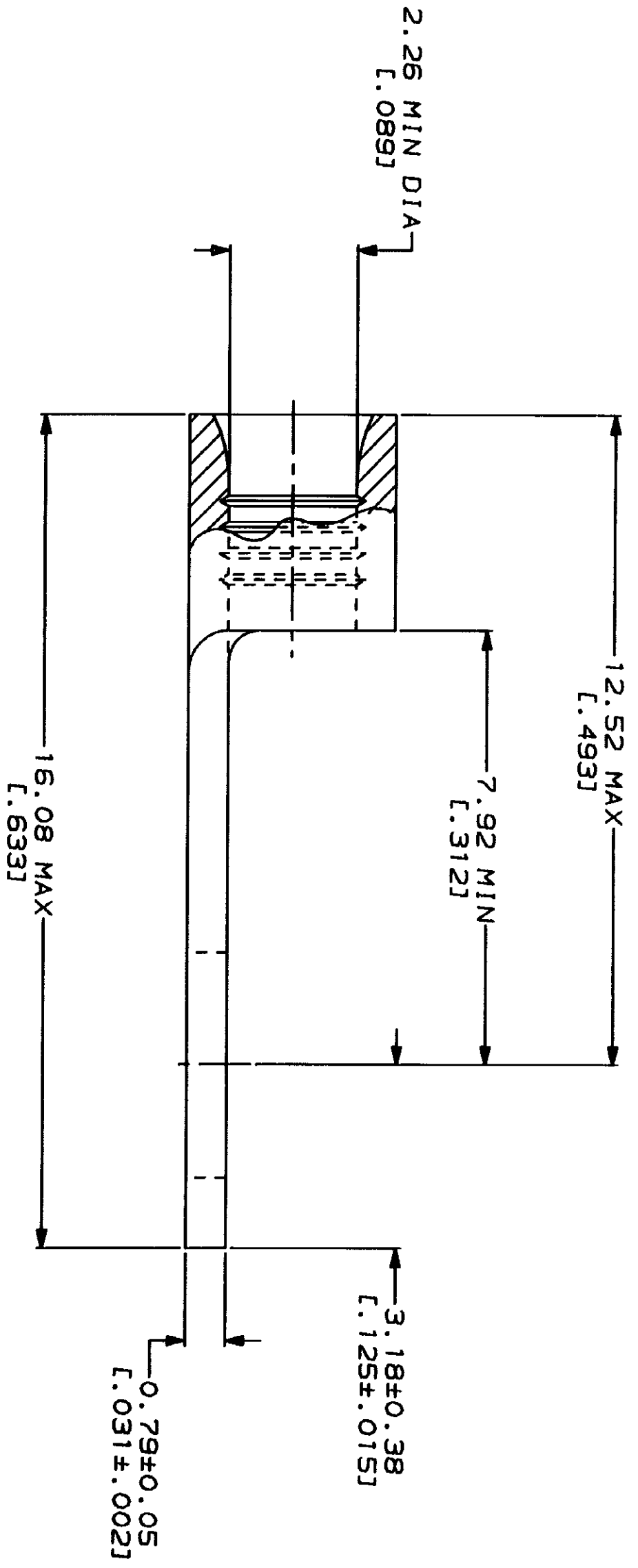
LOC	DIST	ZONE	LTR	DESCRIPTION	DATE	APPD
G	14			REVISED PER 0720-0230-93	2/28/94	gdp

**METRIC**  
 DIMENSIONS LISTED IN mm ( INCHES )



<b>AMP</b> WIRE RANGE	<b>UL</b> E13288 Listed
16-14 AWG STRANDED	16-14 AWG STRANDED
<b>LR7189</b> Certified	MILITARY P/N AND CLASS
NOT CERTIFIED	NOT APPLICABLE

△ STAMP AMP 16-14\* APPROX AS SHOWN



AMP INCORPORATED  
 CUSTOMER SERVICE SYSTEMS

FOR ADDITIONAL PRODUCT INFORMATION OR COPIES OF DRAWINGS AND TECHNICAL DOCUMENTS  
 1-800-522-6752

FOR APPLICATION TOOLING INFORMATION  
 1-800-722-1111

FOR ORDER ENTRY  
 1-800-526-5142

MAX RECOMMENDED OPERATING TEMPERATURE:  
 170°C MAX

VOLTAGE RATING:  
 NOT APPLICABLE

WIRE CROSS SECTIONAL AREA RANGE:  
 1.04-2.62mm<sup>2</sup> (2,050-5,180) CIR MILS STRANDED

DO NOT SCALE PRINT. UNLESS SPECIFIED DIMENSIONS IN INCHES—TOLERANCES ON: 1 PLG DEC ± .005 ANGLES ± .5

MATERIAL: COPPER PER ASTM B-152 ANNEALED

FINISH: TIN PLATE 0.00254L (0.00100) MIN THK PER MIL-T-10727

DR 1-28-93 TA BRINKMAN	CHK 1-28-93 DA PATTERSON
APPD 1-28-93 DE MILLER	APPD 1-28-93 JL HECKLEY
PRODUCT SPEC	APPLICATION SPEC
WEIGHT	SCALE 10:1

**AMP**  
 AMP Incorporated  
 Harrisburg, PA 17105-3608

TERMINAL, RECTANGULAR  
 TONGUE, BUDGET

SIZE: CAGE CODE 00779 DRAWING NO. 35278  
 SCALE 10:1

35278  
 PART NO