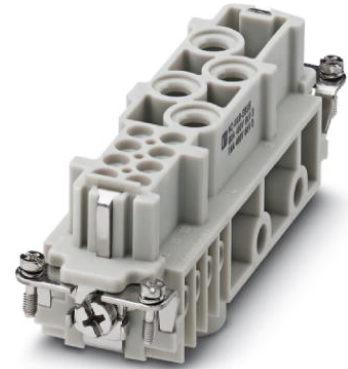



HC-K 4/8-EBUS

Order No.: 1679320

<http://eshop.phoenixcontact.de/phoenix/treeViewClick.do?UID=1679320>HEAVYCON female insert, K4/8 series, for 4 power and 8 control
contacts, screw connection without wire protection**Commercial data**

GTIN (EAN)	 4 017918 163563
sales group	D007
Pack	1 pcs.
Customs tariff	85366990
Catalog page information	Page 446 (PC-2009)

Product notesWEEE/RoHS-compliant since:
08/16/2006

[http://
www.download.phoenixcontact.com](http://www.download.phoenixcontact.com)
Please note that the data given
here has been taken from the
online catalog. For comprehensive
information and data, please refer
to the user documentation. The
General Terms and Conditions of
Use apply to Internet downloads.

Technical data**General data**

Note	For housing HC-B24
Connection method	Screw connection (power contacts) Screw connection (control contacts)

Tightening torque	2 Nm (1.5 mm ² - 2.5 mm ²)
	3 Nm (4 - 16 mm ²)
	0.5 Nm (control contacts)
Ambient temperature (operation)	-40 °C ... 125 °C
Pollution degree	3
Surge voltage category	III
Insertion/withdrawal cycles	≥ 500
Design	K4/8
Conductor cross-section	1.5 mm ² ... 16 mm ² (power contacts)
	0.5 mm ² ... 2.5 mm ² (control contacts)
Connection cross-section AWG	16 ... 6 (power contacts)
	20 ... 14 (control contacts)
Stripping length of the individual wire	14 mm
	7 mm
Assembly instructions	Plug-in connections may only be operated only when there is no load/voltage.

Material data

Inflammability class acc. to UL 94	HB
Contact material	Cu alloy
Material of contact surface, power contact	Ag
Material of contact surface, control contact	Ag
Contact carrier material	PA

Electrical characteristics

Rated voltage (III/3)	400 V (power contacts)
	400 V (control contacts)
Rated surge voltage	6 kV (power contacts)
	6 kV (control contacts)
Rated current	80 A (power contacts)
	16 A (control contacts)

Certificates / Approvals

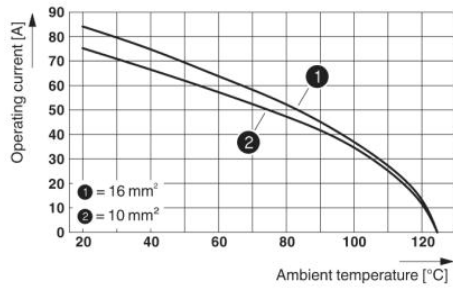


Certification

GOST, UL

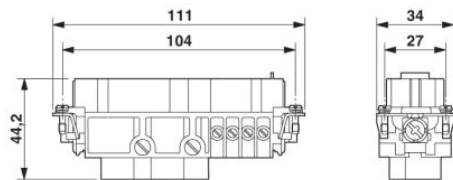
Diagrams/Drawings

Diagram

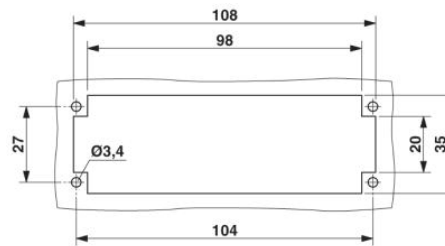


Derating diagram

Dimensioned drawing

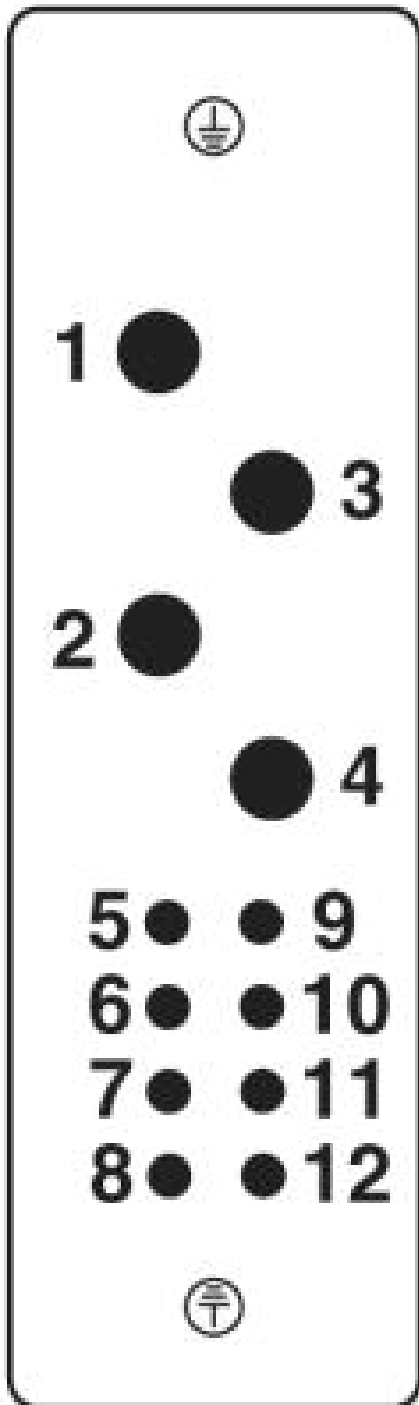


Female insert



Panel cutout

Schematic diagram



Address

PHOENIX CONTACT Deutschland GmbH
Flachmarktstr. 8
32825 Blomberg, Germany
Phone +49 5235 3 12000
Fax +49 5235 3 41200
<http://www.phoenixcontact.de>



© 2010 Phoenix Contact
Technical modifications reserved;