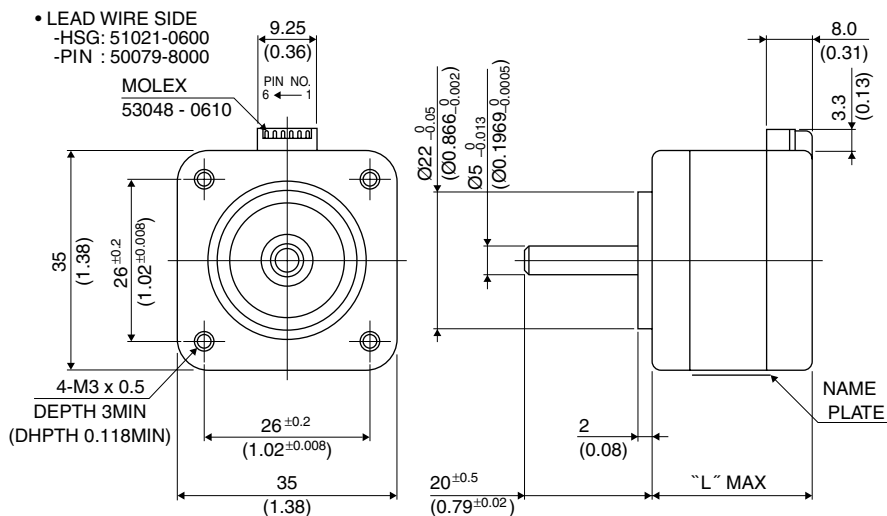


35 \square 1.8°

14PM-M

1.8°

■ 外観図 Outline



Hybrid

UNIT: mm (inch)

結線表 PIN NO. vs. PHASE

相 (PHASE)	A	A COM	\bar{A}	B	B COM	\bar{B}
ピン番号 (PIN NO.)	4	5	6	3	2	1

	"L"
14PM-M2**	22(0.87)
14PM-M0**	26(1.02)
14PM-M1**	38(1.50)
14PM-M4**	53(2.09)

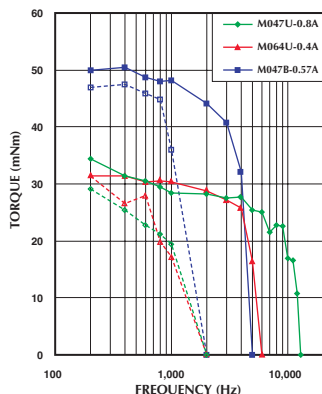
■ 仕様 Specifications

型式	ステップ角	ドライブ方式	定格電流	巻線抵抗	ホールディングトルク	インダクタンス	ロータイナーシャ	ディテントトルク	質量
Model	Step Angle	Drive Sequence	Rated Current	Resistance	Holding Torque	Inductance	Rotor Inertia	Detent Torque	Mass
	(deg)		(A)	(Ohms)	(mNm)	(mH)	(g·cm ²)	(mNm)	(g)
14PM-M047U	1.8	UNI-POLAR	0.8	2.4	34	1.5	8	5.8	120
14PM-M064U	1.8	UNI-POLAR	0.4	9.0	34	5.8	8	5.8	120
14PM-M144U	1.8	UNI-POLAR	1.0 (1.2)	2.7	125 (150)	1.6	11	19.6	200
14PM-M247U	1.8	UNI-POLAR	0.8	1.9	24	0.8	5	4.7	105
14PM-M264U	1.8	UNI-POLAR	0.4	7.0	24	3.1	5	4.7	105
14PM-M444U	1.8	UNI-POLAR	1.0 (1.2)	4.0	190 (230)	2.8	32	34.3	300
14PM-M047B	1.8	BI-POLAR	0.6	4.8	50	6.1	8	5.8	120
14PM-M144B	1.8	BI-POLAR	0.85	5.4	176	6.5	11	19.6	200
14PM-M247B	1.8	BI-POLAR	0.6	3.8	34	3.2	5	4.7	105
14PM-M444B	1.8	BI-POLAR	0.7 (0.9)	7.7	225 (264)	8.4	32	34.3	300

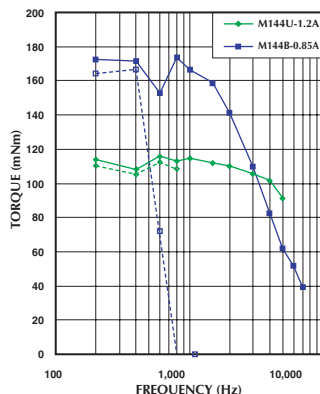
*標準仕様コネクタタイプの定格電流値は最大1.0Aまでとなります。*Maximum rated current for the standard connector type is 1.0A.
* ()内はリード線タイプの数値です。*Values in brackets are for lead wire type.

■ トルク・スピード特性 Torque/Speed Characteristics

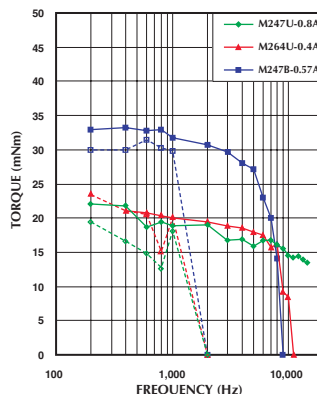
Model No: 14PM-M047U, M064U, M047B
Driver: Chopper Dual
Supply Voltage: 24.0 (Volt)



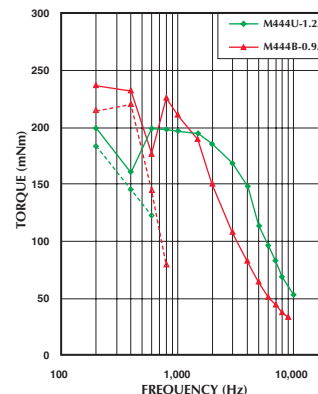
Model No: 14PM-M144U, M144B
Driver: Chopper Dual
Supply Voltage: 24.0 (Volt)



Model No: 14PM-M247U, M264U, M247B
Driver: Chopper Dual
Supply Voltage: 24.0 (Volt)



Model No: 14PM-M444U, M444B
Driver: Chopper Dual
Supply Voltage: 24.0 (Volt)



— : PULL OUT - - - : PULL IN