

THIS DRAWING IS UNPUBLISHED.

RELEASED FOR PUBLICATION

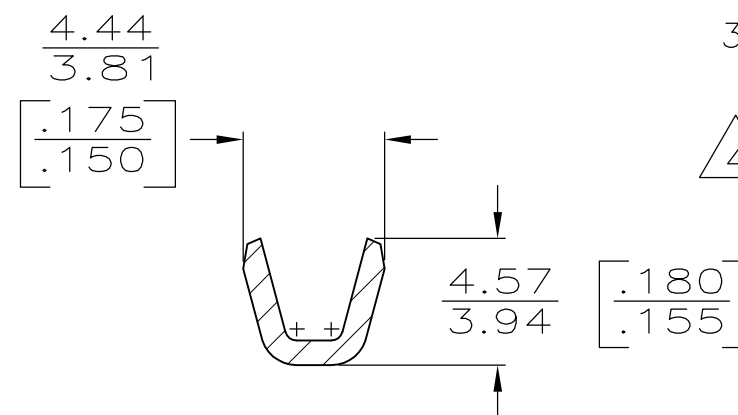
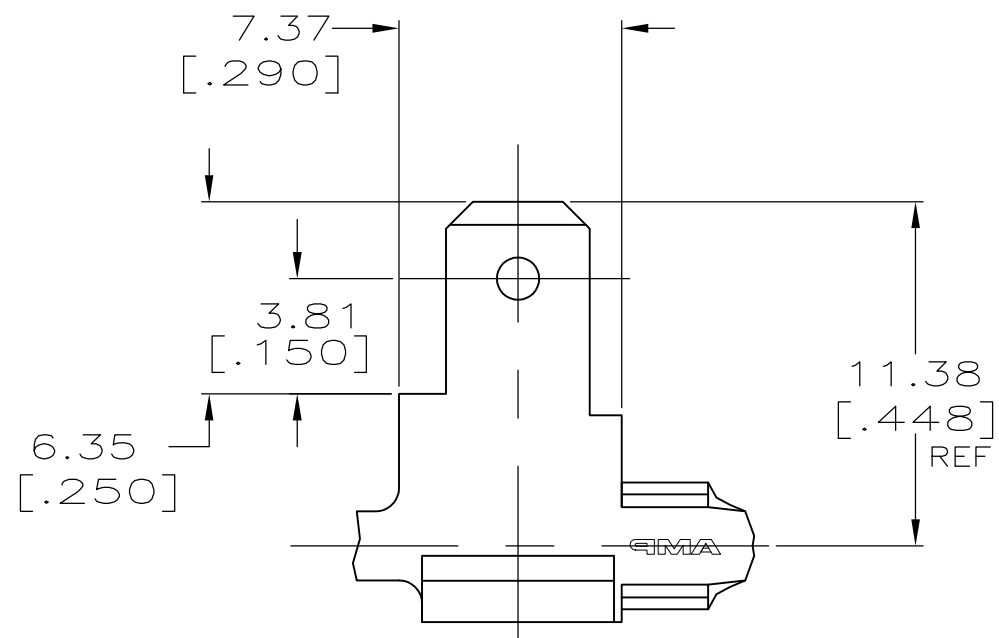
ALL RIGHTS RESERVED.

© COPYRIGHT - By -

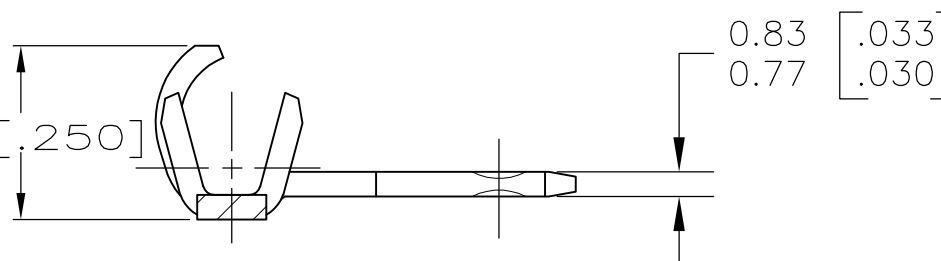
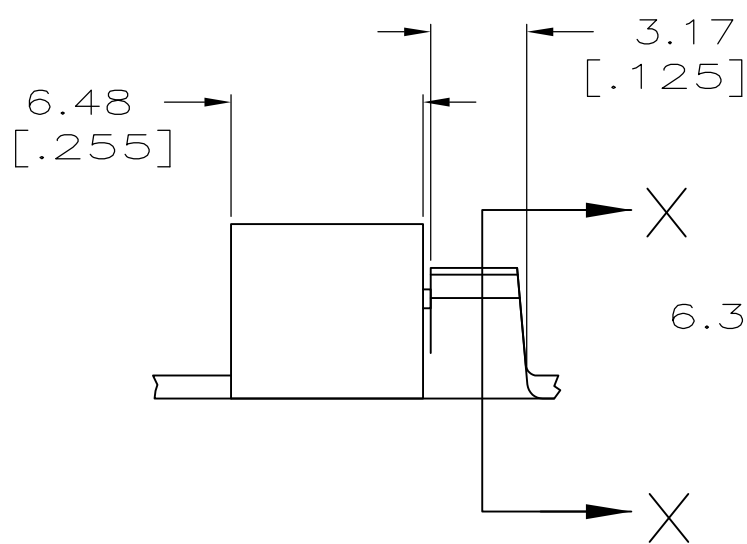
LOC AF DIST 50

REVISIONS

P	LTR	DESCRIPTION	DATE	DWN	APVD
	D1	REVISED PER ECO 11-012757	20JUN11	JR	PD



SECTION X-X



- 1 CONTINUOUS STRIP ON REELS
- 2 WIRE SIZE 0.8-2.0mm2 [18-14] AWG
- 3 INSULATION RANGE 2.03-3.05 [.080-.120] DIA.
- △ 4 PRELIMINARY - NOT FOR PRODUCTION

----	△ 4 63652-2
TIN	63652-1
FINISH	PART NO.

THIS DRAWING IS A CONTROLLED DOCUMENT.		DWN JR RUTH 6/8/92	STE TE Connectivity		
DIMENSIONS: MM [INCHES]		CHK MS FEHER 6/8/92			
TOLERANCES UNLESS OTHERWISE SPECIFIED:		APVD C MEYERS 6/8/92	TAB, FASTON, FLAG, 4.75 [.187] SERIES		
0 PLC ± -		PRODUCT SPEC	-		
1 PLC ± -		APPLICATION SPEC	-		
2 PLC ± -		WEIGHT	-		
3 PLC ± 0.25 [.010]		SIZE	CAGE CODE	DRAWING NO	RESTRICTED TO
4 PLC ± -		A3	00779	C-63652	-
ANGLES ± -		CUSTOMER DRAWING			
MATERIAL #2H BRASS		SCALE 6:1		SHEET 1 OF 1	REV D1
FINISH SEE TABLE					