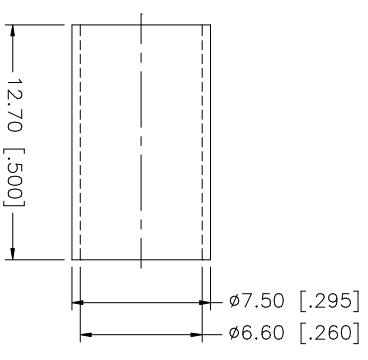
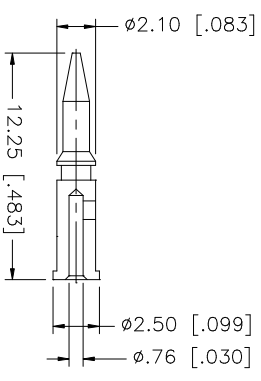
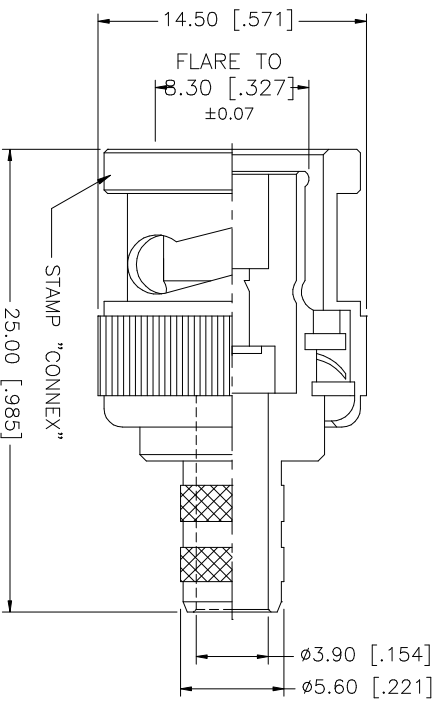
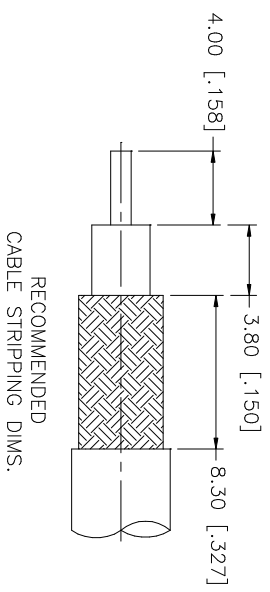


REV.	DATE	DESCRIPTION
A	11/19/03	UPDATE DRAWING FORMAT



NOTE:

1. CRIMPED FERRULE  
HEX. CRIMP SIZE .255"
2. CRIMPED CONTACT PIN  
HEX CRIMP SIZE .068"

UNLESS OTHERWISE SPECIFIED DIMENSIONS ARE IN MILLIMETERS. DIMENSIONS IN [ ] ARE IN INCHES AND FOR CUSTOMER REFERENCE ONLY.	UNLESS OTHERWISE SPECIFIED TOLERANCES FOR MILLIMETERS ARE:	UNLESS OTHERWISE SPECIFIED TOLERANCES FOR INCHES ARE:	APPROVALS	DATE	PART DESCRIPTION
8			DRAWN	11/19/03	<h1 style="text-align: center;">Amphenol Connex</h1> <p style="text-align: center;">BNC CRIMP PLUG (FOR RG-59C/U CABLE)</p> <p style="text-align: center;">PART NO. 112118</p>
7			G.R.S.		
6			CHECKED		
5			ISSUED		
4	FERRULE	COPPER	SHEET	1 OF 1	
3	CONTACT PIN	BRASS	CAD FILE		
2	INSULATOR	DELRIN	C:/112/112118.DWG		
1	BODY	BRASS	DWG. NO. 112118.DWG		
DESCRIPTION		MATERIAL	FINISH	QTY	REV. A
					SIZE A
					SCALE NA