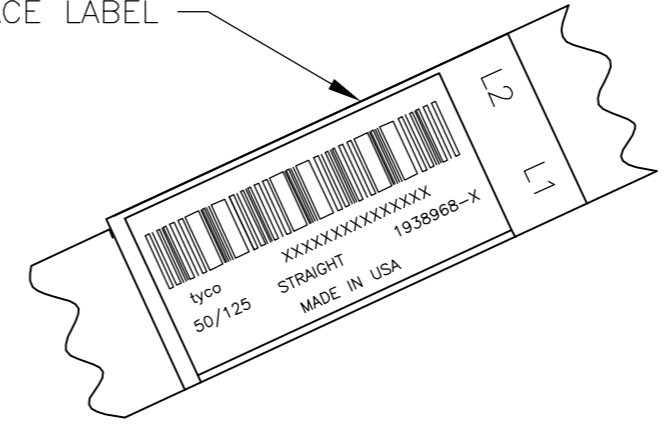
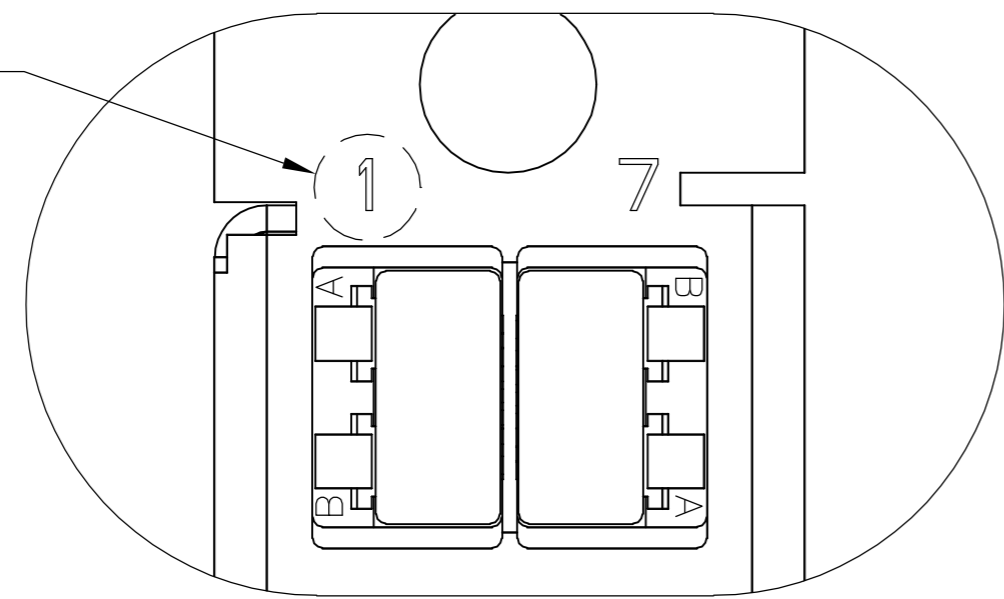
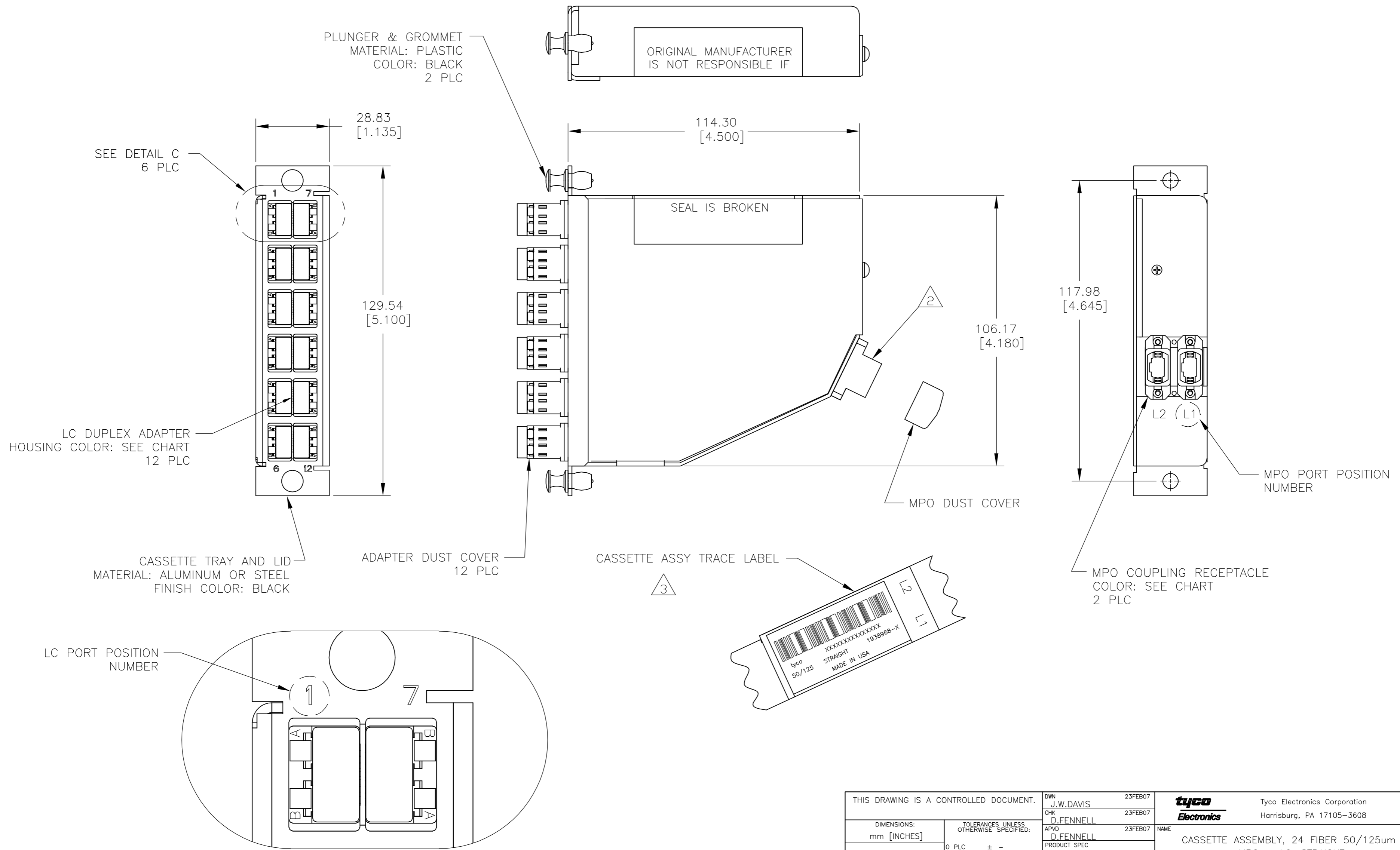


LOC	DIST	REVISIONS					
CE	16	P	LTR	DESCRIPTION	DATE	DWN	APVD
		A		RELEASED	23FEB07	JWD	DLF

D
C
B
A

D
C
B
A



THIS DRAWING IS A CONTROLLED DOCUMENT.		DWN	J.W.DAVIS	23FEB07		Tyco Electronics Corporation	
DIMENSIONS: mm [INCHES]		CHK	D.FENNELL	23FEB07		Harrisburg, PA 17105-3608	
TOLERANCES UNLESS OTHERWISE SPECIFIED:		APVD	D.FENNELL	23FEB07	NAME	CASSIETTE ASSEMBLY, 24 FIBER 50/125um	
0 PLC	± -	PRODUCT SPEC			MPO - LC, STRAIGHT		
1 PLC	± -	APPLICATION SPEC			SIZE	A2	RESTRICTED TO
2 PLC	± -				CAGE CODE	00779	
3 PLC	± -				DRAWING NO	C=1938968	
4 PLC	± -				SCALE	NTS	
ANGLES	± -	WEIGHT			SHEET	1 of 2	
FINISH	-	CUSTOMER DRAWING			REV	A	

1938968

THIS DRAWING IS UNPUBLISHED. RELEASED FOR PUBLICATION
 © COPYRIGHT BY TYCO ELECTRONICS CORPORATION. ALL RIGHTS RESERVED.

LOC	DIST	REVISIONS			
P	LTR	DESCRIPTION	DATE	DWN	APVD
CE	16	SEE SHEET 1	-	-	-

1. MAXIMUM CASSETTE ASSEMBLY LOSS: 1.25dB.

2. WHITE MARKING ON MPO TO BE FACING TOWARD TOP OF CONNECTOR MODULE. WHITE MARK INDICATES FIBER 1 SIDE

3. SEE TRACE LABEL DETAIL

4. A COPY OF CASSETTE ASSEMBLY LOSS TEST DATA WILL BE PLACED INSIDE OR WITH THE UNIT PACKAGE. CASSETTES WILL BE TESTED AT 1300nm WAVELENGTH.

5. PRODUCT AND PROCESSING MUST MEET REQUIREMENTS OF TYCO ELECTRONICS STANDARD 230-702



tyco XXXXXXXXXXXXXXXX
 50/125um STRAIGHT 1938968-X
 MADE IN USA

FIBER PATH – STRAIGHT

MPO L1 PORT POSITION NO	MPO L2 PORT POSITION NO	LC PORT POSITION NO
1	-	1B
2	-	1A
3	-	2B
4	-	2A
5	-	3B
6	-	3A
7	-	4B
8	-	4A
9	-	5B
10	-	5A
11	-	6B
12	-	6A
-	1	7B
-	2	7A
-	3	8B
-	4	8A
-	5	9B
-	6	9A
-	7	10B
-	8	10A
-	9	11B
-	10	11A
-	11	12B
-	12	12A

AQUA SECURE	AQUA SECURE	1-1938968-1
SLATE SECURE	SLATE SECURE	1-1938968-0
ROSE SECURE	ROSE SECURE	1938968-9
VIOLET SECURE	VIOLET SECURE	1938968-8
BROWN SECURE	BROWN SECURE	1938968-7
ORANGE SECURE	ORANGE SECURE	1938968-6
YELLOW SECURE	YELLOW SECURE	1938968-5
BLUE SECURE	BLUE SECURE	1938968-4
GREEN SECURE	GREEN SECURE	1938968-3
RED SECURE	RED SECURE	1938968-2
BLACK STANDARD	BEIGE STANDARD	1938968-1
MPO COUPLING BUSHING COLOR & TYPE	LC ADAPTER COLOR & TYPE	PART NUMBER

THIS DRAWING IS A CONTROLLED DOCUMENT.		DWN J.W.DAVIS 23FEB07	tyco Tyco Electronics Corporation	
DIMENSIONS: mm [INCHES]		CHK D.FENNELL 23FEB07	Harrisburg, PA 17105-3608	
TOLERANCES UNLESS OTHERWISE SPECIFIED:		APVD D.FENNELL 23FEB07	NAME CASSETTE ASSEMBLY, 24 FIBER 50/125um MPO - LC, STRAIGHT	
0 PLC ± -		PRODUCT SPEC	SIZE A2 CAGE CODE 00779 DRAWING NO C=1938968 RESTRICTED TO	
1 PLC ± -		APPLICATION SPEC	SCALE NTS SHEET 2 OF 2 REV A	
2 PLC ± -		WEIGHT -		
3 PLC ± -		CUSTOMER DRAWING		
4 PLC ± -				
ANGLES ± -				
FINISH -				