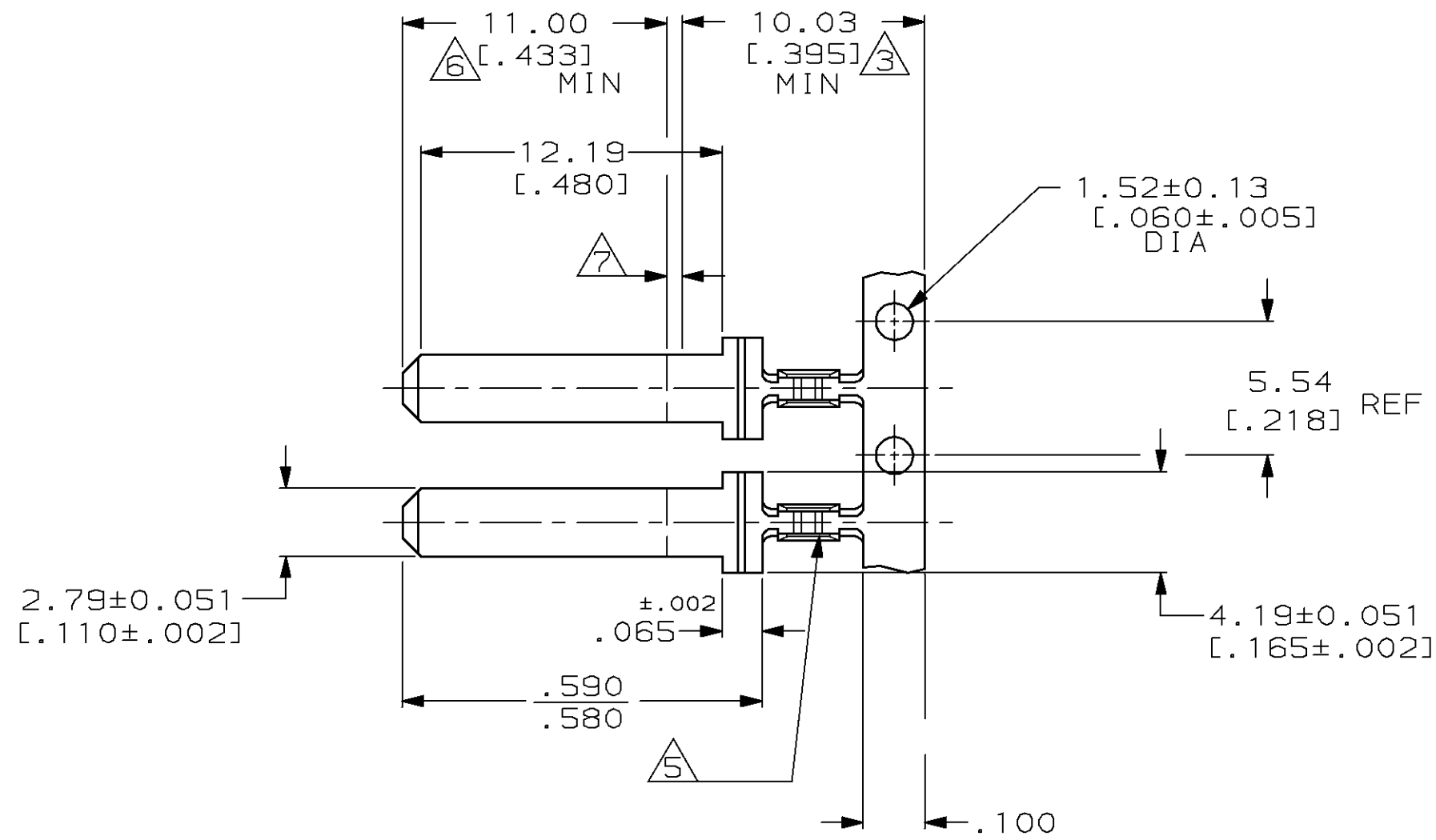
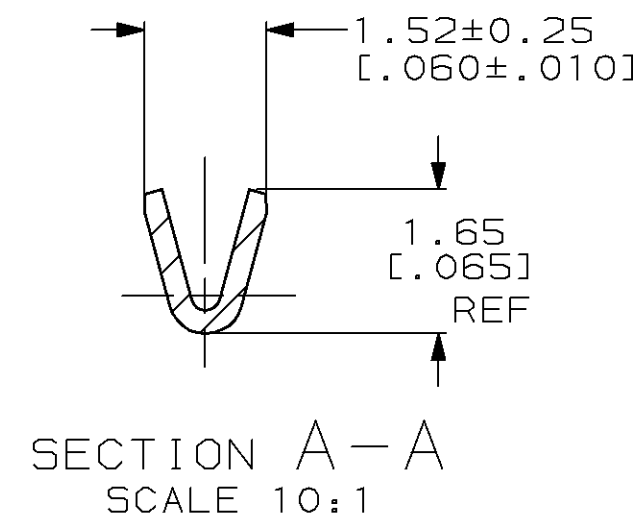
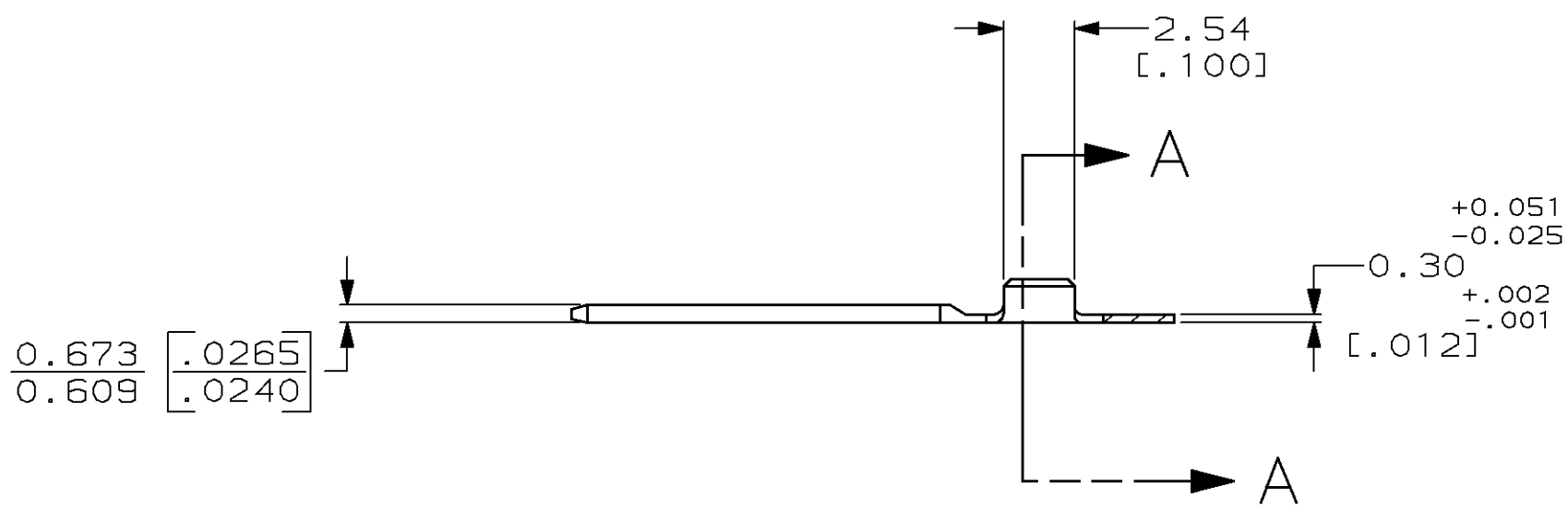


THIS DRAWING IS UNPUBLISHED. RELEASED FOR PUBLICATION
 BY AMP INCORPORATED. ALL RIGHTS RESERVED.

Loc		DIST		REVISIONS			
P	LTR	DESCRIPTION		DATE	DWN	APVD	
AF	50	K		REDRAWN PER 0G1A-0070-99	26FEB99	JR	SH



- 1 CONTINUOUS STRIP ON REELS
- 2 0.002032 [.000080] MIN NICKEL UNDERPLATE ALL OVER.
- 3 0.00254-0.00762 [.000100-.000300] THICK TIN LEAD PLATING IN THIS AREA ONLY.
- 4 WIRE SIZE IS #30 SOLID.
- 5 TWO WIRE CRIMP SERRATIONS LOCATED IN THIS AREA.
- 6 0.00076 [.000030] MIN THICK GOLD PLATING IN THIS AREA ONLY.
- 7 SOME BARE NICKEL MAY BE PRESENT AT THE TRANSITION BETWEEN THE GOLD & TIN-LEAD PLATING.



2 3 6 7	63535-3
0.00381 [.000150] MIN TIN	63535-1
FINISH	PART NO.

THIS DRAWING IS A CONTROLLED DOCUMENT.		DWN	JR RUTH	10/29/97	AMP Incorporated Harrisburg, PA 17105-3608
DIMENSIONS: INCHES		CHK	MS FEHER	10/29/97	
TOLERANCES UNLESS OTHERWISE SPECIFIED:		APVD	P DESANTIS	10/29/97	
0 PLC ±- 1 PLC ±- 2 PLC ±0.25 [.010] 3 PLC ±- 4 PLC ±- ANGLES ±- FINISH SEE TABLE		NAME		PRODUCT SPEC	
MATERIAL SAE CA 260 TEMP 2 BRASS		APPLICATION SPEC		SIZE	A2
		WEIGHT		CAGE CODE	00779
		CUSTOMER DRAWING		DRAWING NO	63535
		SCALE		SHEET	1 OF 1
				REV	K

63535

00

A