



# Atmel CryptoAuthentication Evaluation Kit

## Atmel AT88CK454BLACK Quick Start Guide

### Features

- Installing Atmel CryptoAuthentication Evaluation Studio (ACES)
- Powering the board
- Reading the device configuration information Atmel ATSHA204 device

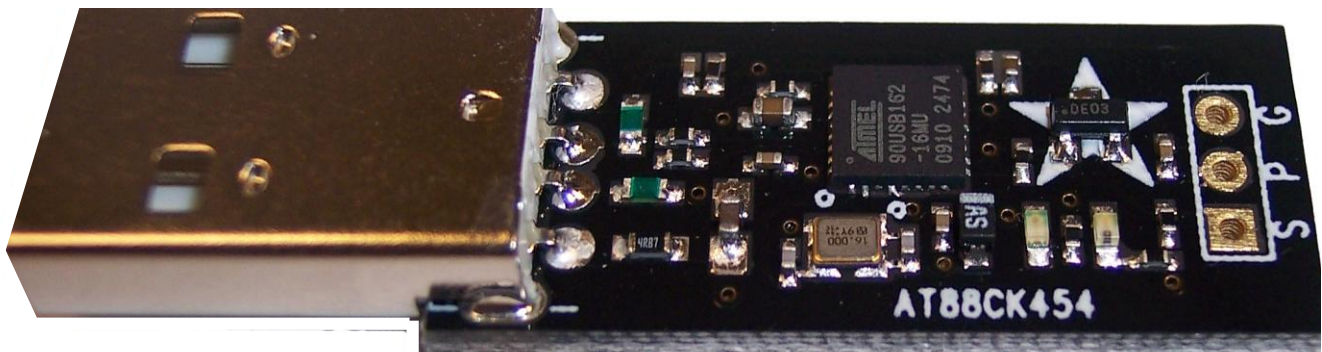
### Contents

- Atmel AT88CK454BLACK USB Dongle
- Quick start guide

### Introduction

Atmel® AT88CK454BLACK is an Atmel CryptoAuthentication™ evaluation kit, which can be used as a reference design for an USB application requiring the Atmel CryptoAuthentication product family.

Figure 1. Atmel AT88CK454BLACK evaluation kit





## 1. Install ACES (Atmel CryptoAuthentication Evaluation Studio)

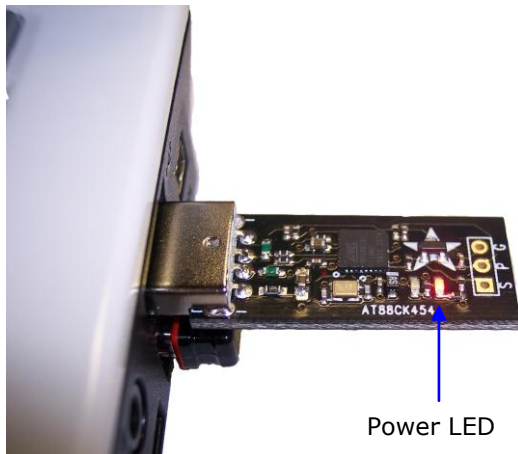
Visit [www.atmel.com/cryptokits](http://www.atmel.com/cryptokits) to download and install the latest ACES.

## 2. Powering up the board

The Atmel AT88CK454BLACK is a USB powered device.

- Simply insert the board into an open USB port

Figure 2-1. Atmel AT88CK454BLACK USB device



## 3. Reading the device configuration zone

- Insert the Atmel AT88CK454BLACK into a USB port
- Launch **ACES CE** for the desktop shortcut icon or from  
Start / All Programs / Atmel Crypto Solutions / ACES / ACES CE

Figure 3-1. ACES



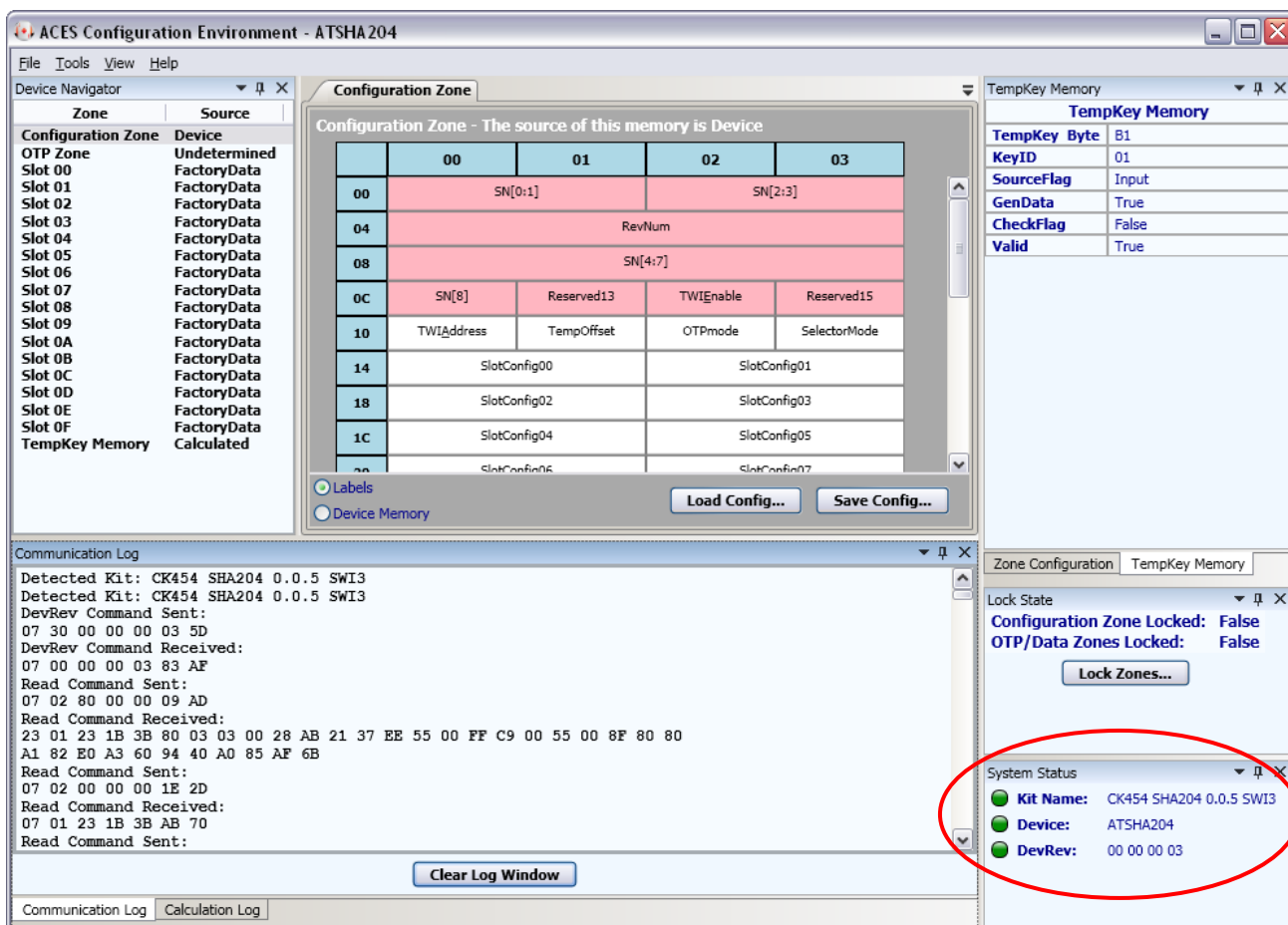
- Figure 3-2 will appear indicating the board (CK454), device (SHA204), firmware version (0.0.5), communication interface (SWI - single wire interface), and the device lead count SWI3.

Figure 3-2. Kit detection screen



- Selecting the **Show Quick Start Guide** check box will launch the QSG alongside the configuration environment
- Click the "Select Kit" button to launch **ACES Configuration Environment – ATSHA204** pane

Figure 3-3. ACES Configuration Environment – Atmel ATSHA204





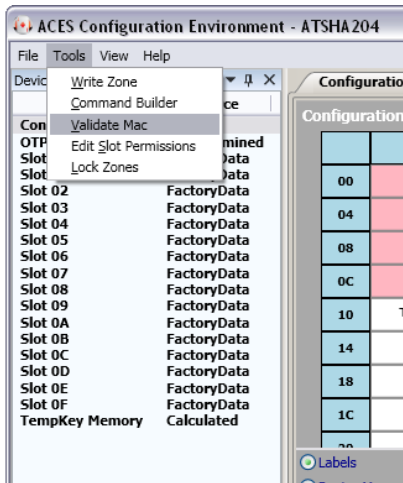
- All three **System Status** fields should be green and populated, which indicates the proper communication with the development kit and the Atmel ATSHA204 device

Kit Name: SHA204 0.0.3 SWI  
Device: ATSHA204  
DevRev: 00 00 00 03

#### 4. Executing the **Validate MAC** Command

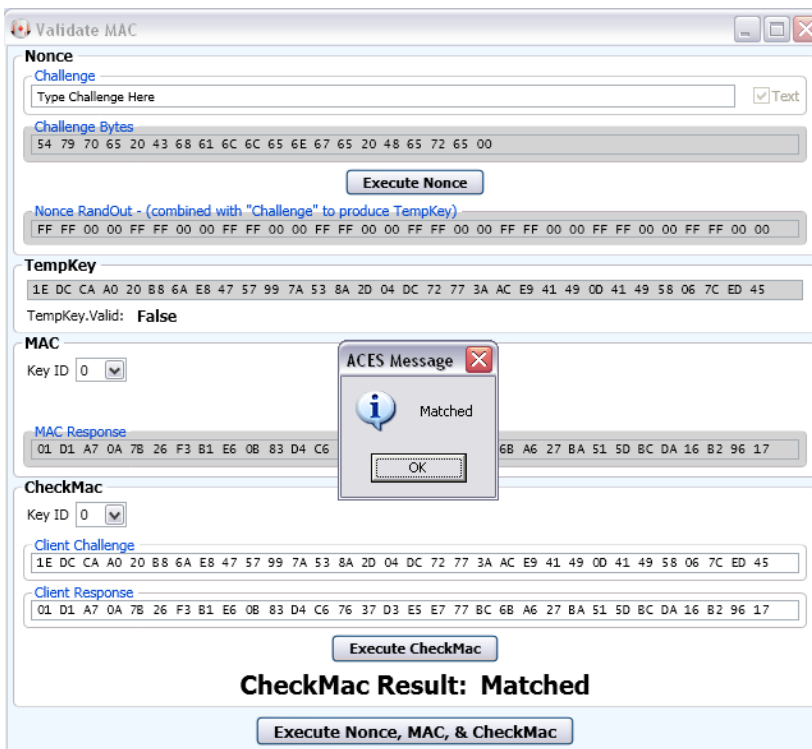
- Go to Tools \ Validate MAC to launch the Validate MAC window, see Figure 4-1

Figure 4-1. Validate MAC tools menu



- Figure 4-2 will appear
- Click the Execute Nonce button
- Click the MAC button
- Click the CheckMac button
- The CheckMac Result: should indicate Matched

Figure 4-2. Validate MAC pane



Congratulations, your Atmel AT88CK454BLACK is up and running.

See ACES online Help additional information.

For additional samples, go to: [http://www.atmel.com/forms/Samples.asp?family\\_id=699](http://www.atmel.com/forms/Samples.asp?family_id=699)

## 5. Additional Kits Information

Table 5-1. Atmel CryptoAuthentication kits

Atmel CryptoAuthentication kits			
Atmel kits	Atmel device supported	Device footprint	Socket(s)
AT88CK454BLACK	ATSHA204	SOT23-3	None/USB Dongle
AT88CK101STK3	ATSHA204	SOT23-3	1
AT88CK101STK8	ATSHA204	8LD SOIC	1
AT88CK109STK3	ATSHA204	SOT23-3	2
AT88CK109STK8	ATSHA204	8LD SOIC	2

## 6. Firmware upgrade

See application note, doc8746, Upgrading Crypto Kits Firmware.



## 7. References and further information

A complete reference design including schematics, Gerber files, bill of materials (BOM), hardware user guide and development and demonstration software is conveniently downloadable from the Atmel website at [www.atmel.com/cryptokits](http://www.atmel.com/cryptokits).

## 8. EVALUATION BOARD/KIT IMPORTANT NOTICE

This evaluation board/kit is intended for **ENGINEERING, DEVELOPMENT, DEMONSTRATION** or **EVALUATION PURPOSE ONLY**. It is not a finished product and may not (yet) comply with some or any technical or legal requirements that are applicable to finished products, including, without limitations, directives regarding electromagnetic compatibility, recycling (WEEE), FCC, CE or UL (except as may be otherwise noted on the board/kit). Atmel® supplied this board/kit "AS IS," without any warranties, with all faults, at the buyer's and further users' sole risk. The user assumes all responsibility and liability for proper and safe handling of goods. Further, the user indemnifies Atmel from claims arising from the handling or use of goods. Due to open construction of the product, it is the user's responsibility to take any and all appropriate precautions with regard to electrostatic discharge and any other technical or legal concerns.

EXCEPT TO THE EXTENT OF INDEMNITY SET FORTH ABOVE, NEITHER USER NOR ATMEL SHALL BE LIABLE TO EACH OTHER FOR ANY INDIRECT, SPECIAL, INCIDENTAL, OR CONSEQUENTIAL DAMAGES.

No license is granted under any patent right or other intellectual property right of Atmel covering or relating to any machine, process, or combination in which such Atmel product or services might be or are used.

Mailing Address: Atmel Corporation  
2325 Orchard Parkway  
San Jose, CA 95131

**Atmel Corporation**

2325 Orchard Parkway  
San Jose, CA 95131  
USA

**Tel:** (+1)(408) 441-0311

**Fax:** (+1)(408) 487-2600

www.atmel.com

**Atmel Asia Limited**

Unit 01-5 & 16, 19F  
BEA Tower, Millennium City 5  
418 Kwun Tong Road  
Kwun Tong, Kowloon  
HONG KONG

**Tel:** (+852) 2245-6100

**Fax:** (+852) 2722-1369

**Atmel Munich GmbH**

Business Campus  
Parkring 4  
D-85748 Garching b. Munich  
GERMANY

**Tel:** (+49) 89-31970-0

**Fax:** (+49) 89-3194621

**Atmel Japan**

9F, Tonetsu Shinkawa Bldg.  
1-24-8 Shinkawa  
Chuo-ku, Tokyo 104-0033  
JAPAN

**Tel:** (+81)(3) 3523-3551

**Fax:** (+81)(3) 3523-7581

© 2011 Atmel Corporation. All rights reserved. / Rev.: 8724A-CRYPTO-3/11

Atmel®, logo and combinations thereof, CryptoAuthentication™ and others are registered trademarks or trademarks of Atmel Corporation or its subsidiaries. Other terms and product names may be trademarks of others.

Disclaimer: The information in this document is provided in connection with Atmel products. No license, express or implied, by estoppel or otherwise, to any intellectual property right is granted by this document or in connection with the sale of Atmel products. EXCEPT AS SET FORTH IN THE ATMEL TERMS AND CONDITIONS OF SALES LOCATED ON THE ATMEL WEBSITE, ATMEL ASSUMES NO LIABILITY WHATSOEVER AND DISCLAIMS ANY EXPRESS, IMPLIED OR STATUTORY WARRANTY RELATING TO ITS PRODUCTS INCLUDING, BUT NOT LIMITED TO, THE IMPLIED WARRANTY OF MERCHANTABILITY, FITNESS FOR A PARTICULAR PURPOSE, OR NON-INFRINGEMENT. IN NO EVENT SHALL ATMEL BE LIABLE FOR ANY DIRECT, INDIRECT, CONSEQUENTIAL, PUNITIVE, SPECIAL OR INCIDENTAL DAMAGES (INCLUDING, WITHOUT LIMITATION, DAMAGES FOR LOSS AND PROFITS, BUSINESS INTERRUPTION, OR LOSS OF INFORMATION) ARISING OUT OF THE USE OR INABILITY TO USE THIS DOCUMENT, EVEN IF ATMEL HAS BEEN ADVISED OF THE POSSIBILITY OF SUCH DAMAGES. Atmel makes no representations or warranties with respect to the accuracy or completeness of the contents of this document and reserves the right to make changes to specifications and products descriptions at any time without notice. Atmel does not make any commitment to update the information contained herein. Unless specifically provided otherwise, Atmel products are not suitable for, and shall not be used in, automotive applications. Atmel products are not intended, authorized, or warranted for use as components in applications intended to support or sustain life.