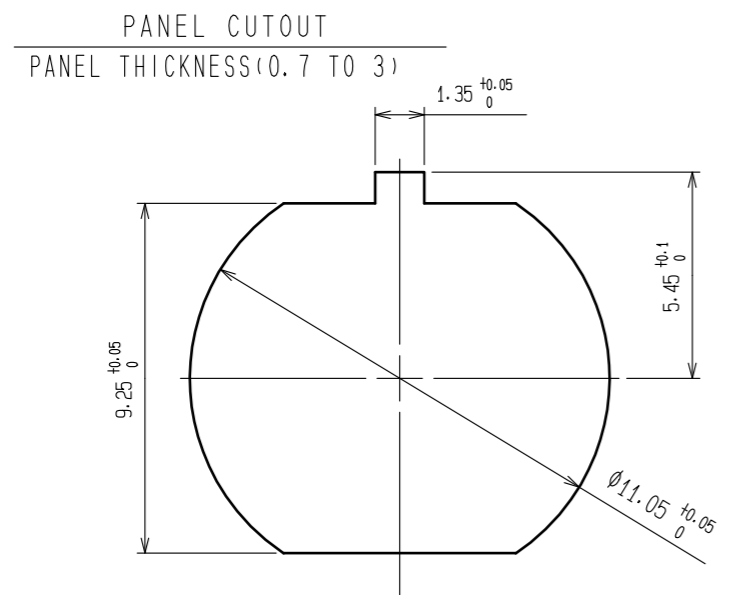
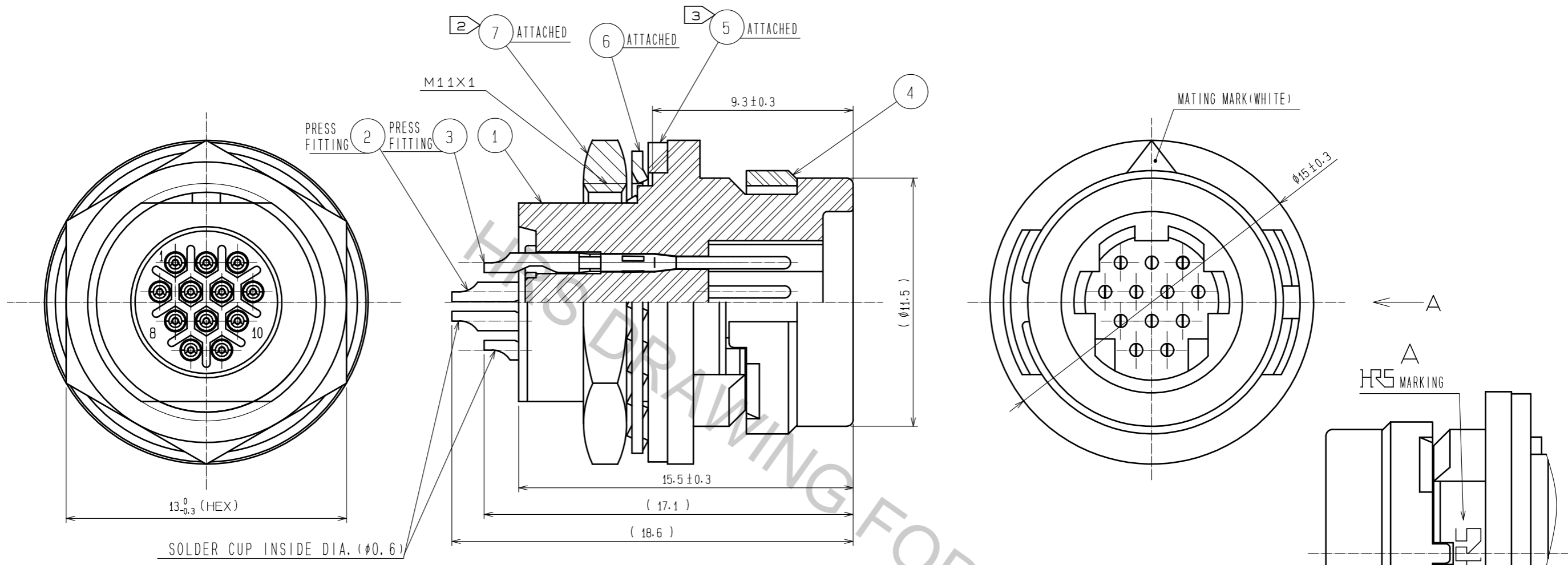


Aug.1.2018 Copyright 2018 HIROSE ELECTRIC CO., LTD. All Rights Reserved.
 In case that the application demands a high level of reliability, such as automotive,
 please contact a company representative for further information.



- NOTES
- ① CONTACT AREA: GOLD PLATING 0.2μm min.
 LEAD AREA: GOLD PLATING FLASH.
 UNDER PLATING: NICKEL 2μm min.
 - ② THE RECOMMENDED CLAMP TORQUE OF REF. NO. ⑦ TO BE 0.8N·m.
 LOCTITE 263, LOCPRIMER 7649, HENKEL JAPAN IS RECOMMENDED TO PREVENT
 REF. NO. ⑦ FROM LOOSENING.
 - ③ AFTER REF. NO. ⑤ IS INSERTED TO REF. NO. ①, REF. NO. ① IS MOUNTED ON THE PANEL.
 MAKE SURE THAT REF. NO. ⑤ DOES NOT HAVE ANY FACTORS TO REDUCE WATER-RESISTANCY,
 SUCH AS SCRATCH, TWIST, PINCHING, OR DUST.

NO.	MATERIAL	FINISH .	REMARKS	NO.	MATERIAL	FINISH .	REMARKS
4	POLYPHENYLENE SULFIDE	(BLACK)	UL94V-0				
3	COPPER ALLOY	①		7	BRASS	NICKEL PLATING	
2	COPPER ALLOY	①		6	PHOSPHOR BRONZE	NICKEL PLATING	
1	POLYPHENYLENE SULFIDE	(BLACK)	UL94V-0	5	CHLOROPRENE RUBBER	(BLACK)	

UNITS	SCALE	COUNT	DESCRIPTION OF REVISIONS	DESIGNED	CHECKED	DATE
mm	5 : 1	△				
APPROVED : HY. KOBAYASHI			18.03.12	DRAWING NO. EDC-113453-31-01		
CHECKED : HY. KOBAYASHI			18.03.12	PART NO. HR30-7R-12P(31)		
DESIGNED : DS. MATSUNE			18.03.12	CODE NO. CL130-1016-6-31		
DRAWN : DS. MATSUNE			18.03.12			