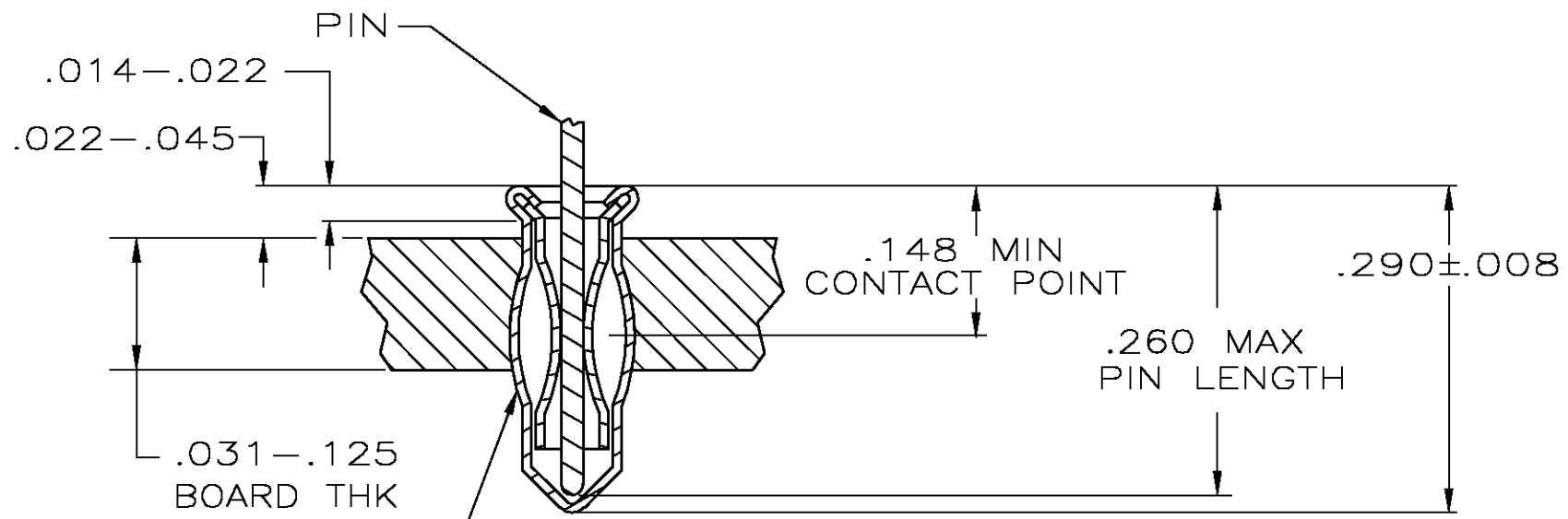
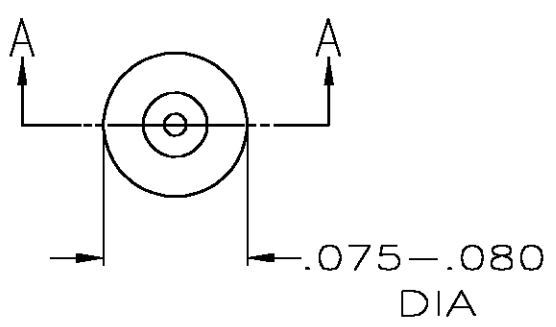


THIS DRAWING IS UNPUBLISHED. RELEASED FOR PUBLICATION  
 © COPYRIGHT BY TYCO ELECTRONICS CORPORATION. ALL RIGHTS RESERVED.

LOC	DIST	REVISIONS					
GP	00	P	LTR	DESCRIPTION	DATE	DWN	APVD
			C	REVISED PER 0S11-0088-03	6-4-03	JB	KK



MSS INSERTION MACHINE CAPABLE OF OVALIZING SOCKET FOR RETENTION IN PC BOARD WITH .063±.003 DIA HOLE PRIOR TO SOLDERING OPERATION

1. MATERIAL:  
 EYELET - COPPER (QQ-C-576)  
 SPRING - BERYLLIUM COPPER (QQ-C-533)
2. TIN PLATE(MIL-T-10727).000150 MIN THK
3. GOLD PL(MIL-G-45204).000030 MIN THK OVER NICKEL (QQ-N-290) .000011 MIN THK ON CONTACT AREA.
4. TIN PLATE(MIL-T-10727).000100 MIN THK
5. TO INSURE 1/2 OZ MIN RETENTION DO NOT EXCEED .004 DIFFERENCE IN PIN DIA WHEN CHANGING TO A SMALLER DIA PIN
6. HOLE SIZE FOR HAND INSERTION .063-.066
7. TIN PLATE(ASTM B 545) .000100 MIN THK

.148/.260	.028/.033	TIN 2	TIN 2	6-645988-1
		GOLD 3	TIN 2	645988-2
		TIN 4		645988-1
LENGTH	DIA 5	SPRING	EYELET	PART NO
PIN		FINISH		

THIS DRAWING IS A CONTROLLED DOCUMENT.		DWN D.HOLLINGSWORTH 1/24/85	Tyco Electronics Corporation														
DIMENSIONS: INCHES		CHK P.MUTZABAUGH 3/4/85	APVD G.D.MILLER 3/4/85														
TOLERANCES UNLESS OTHERWISE SPECIFIED:		NAME MINIATURE SPRING SOCKET ASSEMBLY															
<table border="0"> <tr><td>0 PLC</td><td>± -</td></tr> <tr><td>1 PLC</td><td>± -</td></tr> <tr><td>2 PLC</td><td>± -</td></tr> <tr><td>3 PLC</td><td>± -</td></tr> <tr><td>4 PLC</td><td>± -</td></tr> <tr><td>ANGLES</td><td>± -</td></tr> </table>		0 PLC	± -	1 PLC	± -	2 PLC	± -	3 PLC	± -	4 PLC	± -	ANGLES	± -	PRODUCT SPEC APPLICATION SPEC			
0 PLC	± -																
1 PLC	± -																
2 PLC	± -																
3 PLC	± -																
4 PLC	± -																
ANGLES	± -																
MATERIAL		WEIGHT	SIZE A3	CAGE CODE 00779	DRAWING NO C-645988												
		CUSTOMER DRAWING			RESTRICTED TO												
		SCALE 10:1		SHEET 1 OF 1	REV C												