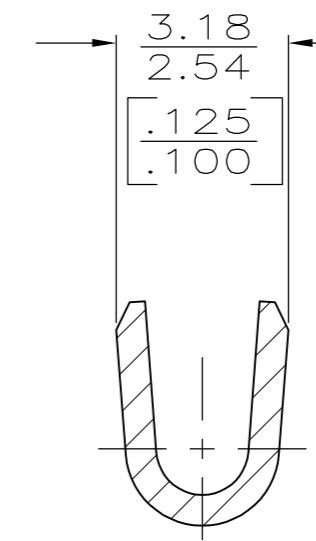
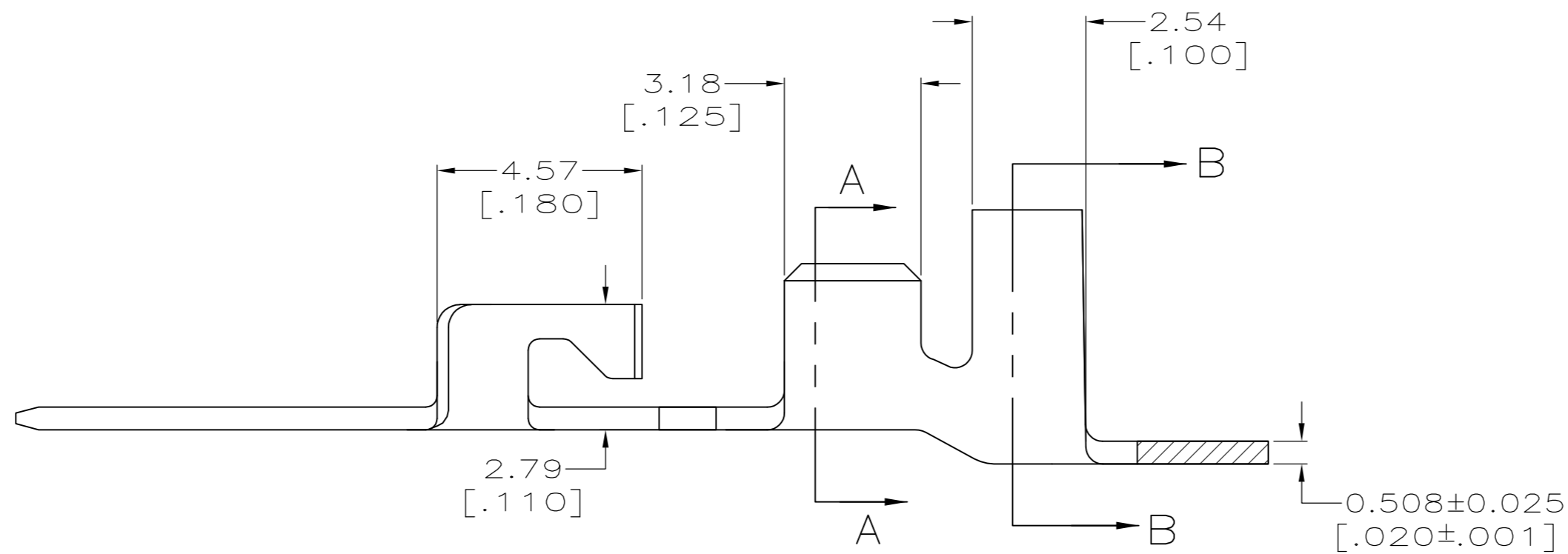
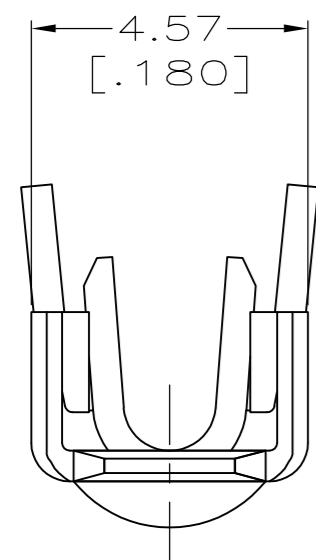
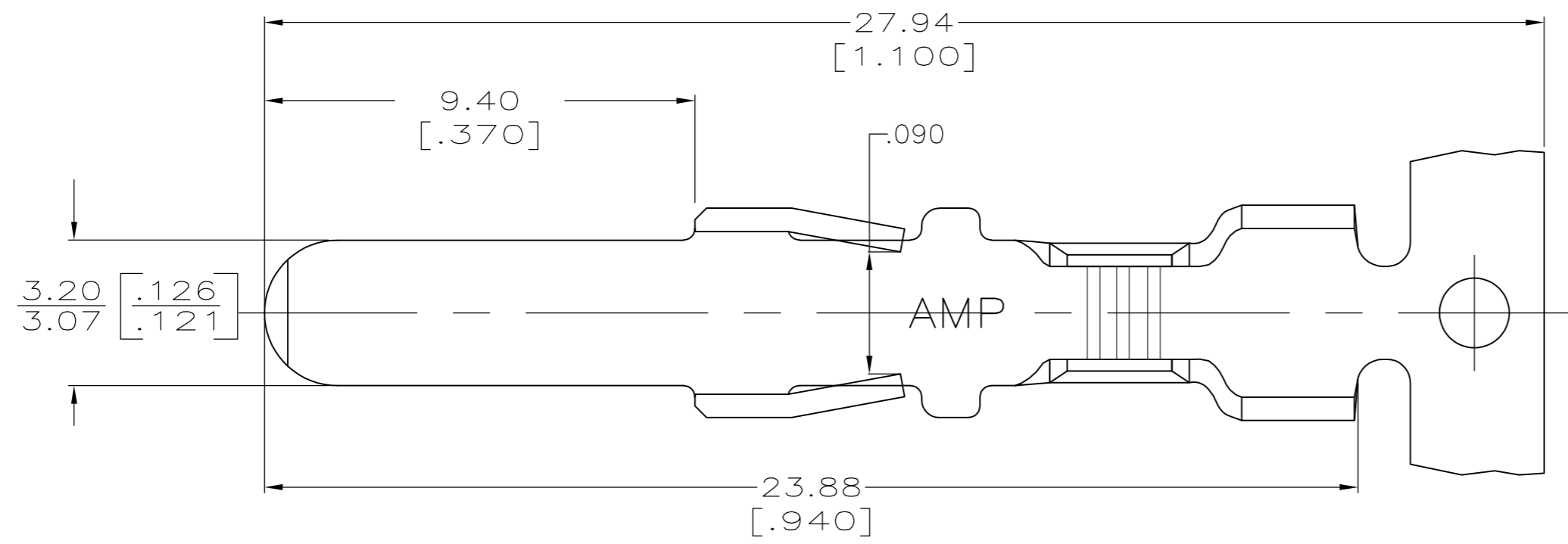


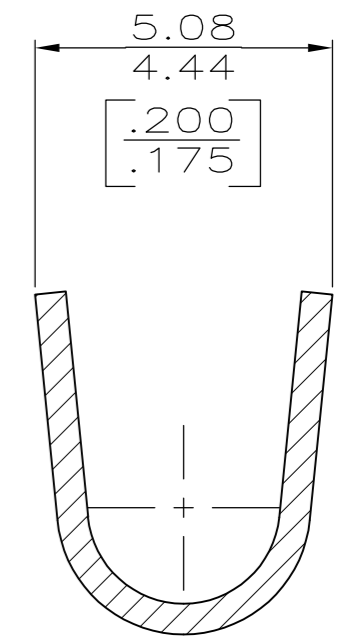
THIS DRAWING IS UNPUBLISHED. RELEASED FOR PUBLICATION  
 © COPYRIGHT - By - ALL RIGHTS RESERVED.

LOC	DIST	REVISIONS					
		P	LTR	DESCRIPTION	DATE	DWN	APVD
AF	50	J1		REVISED PER ECR-12-019658	23NOV12	KH	GJ

- 1 CONTINUOUS STRIP ON REEL.
- 2 INSULATION RANGE 3.12[.123] MAX DIA.
- 3 WIRE SIZE IS 0.5-1.3mm<sup>2</sup>[#20-#16 AWG]



SECTION A-A



SECTION B-B

1217071

B

A

1217071-1  
 PART NO

THIS DRAWING IS A CONTROLLED DOCUMENT.		DWN	JR RUTH	3/10/98	<b>TE</b> TE Connectivity
DIMENSIONS: mm [INCHES]		CHK	P FORTNEY	3/10/98	
TOLERANCES UNLESS OTHERWISE SPECIFIED:		APVD	R KUZO	3/10/98	
0 PLC ± - 1 PLC ± - 2 PLC ± 0.25 [.010] 3 PLC ± - 4 PLC ± - ANGLES ± -		PRODUCT SPEC	NAME		
MATERIAL: BRASS		FINISH	POST PLATED TIN		APPLICATION SPEC
		WEIGHT	-		114-2145
		CUSTOMER DRAWING	SCALE	8:1	SIZE: A2
			SHEET	1 OF 1	CAGE CODE: 00779
			REV	J1	DRAWING NO: 1217071
					RESTRICTED TO: -