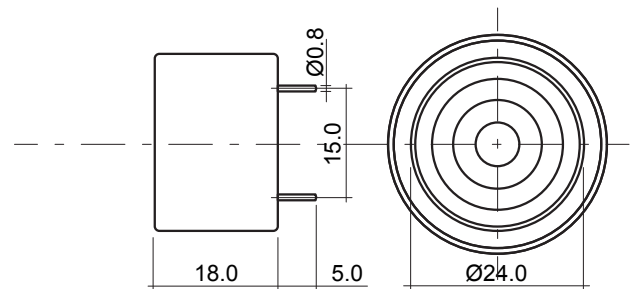
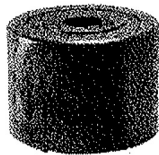


PRODUCT DATA SHEET

PART NO. PB -2418-2 NON-WASHABLE TYPE

PB -2418-2

DIMENSIONS



DIMENSION: Ø24.0 x H18.0

Epoxy Polting Material

SPECIFICATION	UNIT	PB -2418-2
Rated Voltage	(VDC)	12
Operating Voltage	(VDC)	3~20
Current Consumption	(mA)	8
Sound Output (min)	(dB)	90
Resonance Frequency	(Hz)	3700±500
Operating Temp	(C)	-20~+60
Storage Temp	(C)	-30~+70
Weight	(g)	5
Dimension	mm	Ø24 x H18.0
Terminal		Pin
Environmental Protection Regulation		RoHS

*Value applying at rated voltage

*Distance for measurement 30 cm