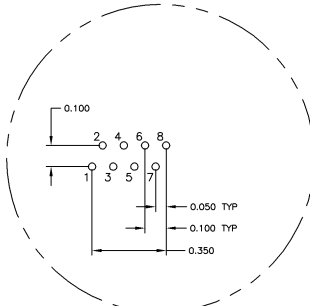
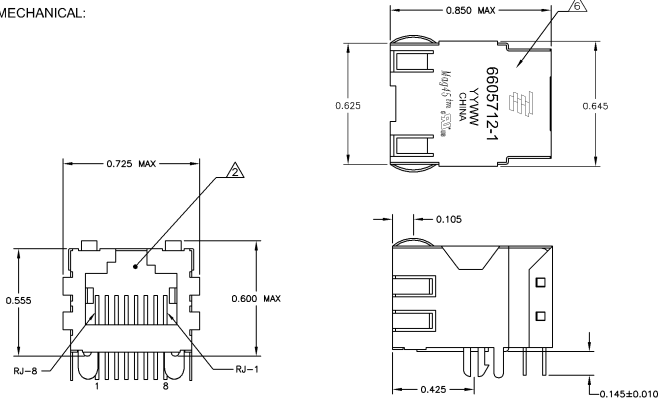


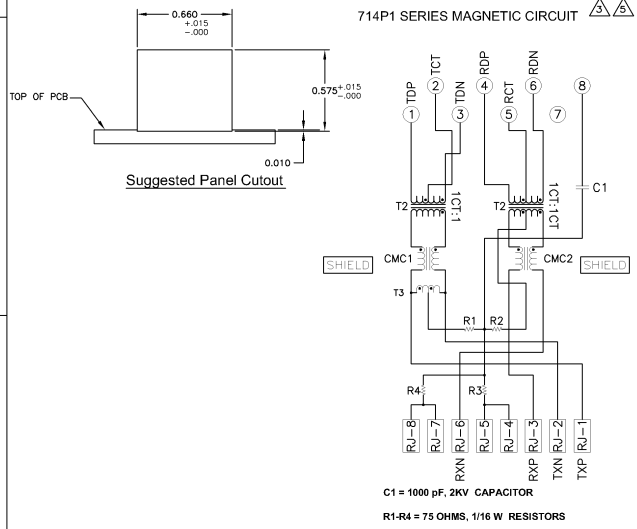
MECHANICAL:



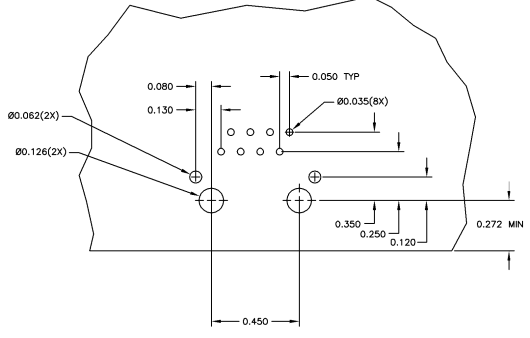
Pin Designations

- △ MATERIALS
 - HOUSING - THERMOPLASTIC PET POLYESTER FLAMMABILITY RATING UL 94V-0
 - SHIELD - 0.01" THICK C28400 BRASS PREPLATED WITH 30µINCH MIN SEMI-BRIGHT NICKEL. SOLDER TABS POST DIPPED WITH 100µINCH MIN SAC SOLDER
 - MOD JACK CONTACTS - 0.0157 X 0.018" PHOSPHOR BRONZE, 50µINCH MIN OVERALL NICKEL UNDERPLATE WITH SELECT 50µINCH MIN HARD GOLD FINISH PLATE
 - SOLDER TAILS WITH 100µINCH MIN PLATE TIN AND/OR SAC SOLDER DIP
- △ RJ45 JACK CAVITY CONFORMS TO FCC RULES AND REGULATIONS PART 68, SUB PART F
- △ MAGNETICS
 - IMPEDANCE 100 OHMS
 - TURNS RATIO (RHP LABEL) TX = 11, RX = 11
 - OPEN CIRCUIT INDUCTANCE (OCL) 35µH MIN @100KHz, 0 IVRMS, 8mADC BIAS FROM 0°C TO 70°C, TX AND RX
 - PERFORMANCE @ 25°C
 - INSERTION LOSS (IL) 1.8dB MAX FROM 0.5MHz TO 100MHz
 - RETURN LOSS (RL) 18dB MIN FROM 0.5MHz TO 30MHz
 - 18-20LOG(f/30)dB MIN FROM 30.1MHz TO 60MHz
 - 12dB MIN FROM 60.1MHz TO 80MHz
 - CROSSTALK ATTENUATION 35dB MIN FROM 0.5MHz TO 40MHz
 - 33-20LOG(f/50)dB MIN FROM 40.1MHz TO 100MHz
 - COMMON MODE REJECTION RATIO (CMRR) 30dB MIN FROM 0.5MHz TO 100MHz
 - ISOLATION VOLTAGE: COMPLIES WITH IEEE802.3 2002, PARA 23.5.11, ITEM b
- 4. OPERATING TEMPERATURE: FROM 0°C TO -70°C
- △ INDICATED CONNECTIONS ARE FOR NIC CONFIGURATION. THE MAGNETICS ARE ASYMMETRICAL, AND THEREFORE DO NOT SUPPORT AUTO-MDI/MDIX.
- △ TYCO ELECTRONICS LOGO, PART NUMBER, DATE CODE, COUNTRY OF ORIGIN AND AGENCY APPROVAL MARKING IN APPROXIMATE LOCATION SHOWN.
- 7. THE PART IS RECOMMENDED FOR WAVE SOLDERING PROCESS. PREHEAT TEMPERATURE IS 120°C TO 160°C, 120 SECONDS TO 180 SECONDS, PEAK WAVE SOLDERING TEMPERATURE IS 260°C MAX, 10 SECONDS MAX.

714P1 SERIES MAGNETIC CIRCUIT



C1 = 1000 pF, 2KV CAPACITOR
R1-R4 = 75 OHMS, 1/16 W RESISTORS



Suggested PCB Layout

6605712-1
PART NUMBER

THIS DRAWING IS A CONTROLLED DOCUMENT.		ATTACHMENT	DATE	BY	TYCO ELECTRONICS	TYCO ELECTRONICS CORPORATION
REVISIONS	DESCRIPTION	DATE	BY	CHK	APPROVED	CHANGING, OHIO
1	1X1 MAG45(TM), 7K2P1 SCHEMATIC, 714 SERIES CIRCUIT, WITH DECOUPLING CAPACITOR, NO LEADS	108-2100				
2	REV PER ECO-09-000302					
3						
4						
5						
6						
7						
8						
9						
10						
11						
12						
13						
14						
15						
16						
17						
18						
19						
20						
21						
22						