

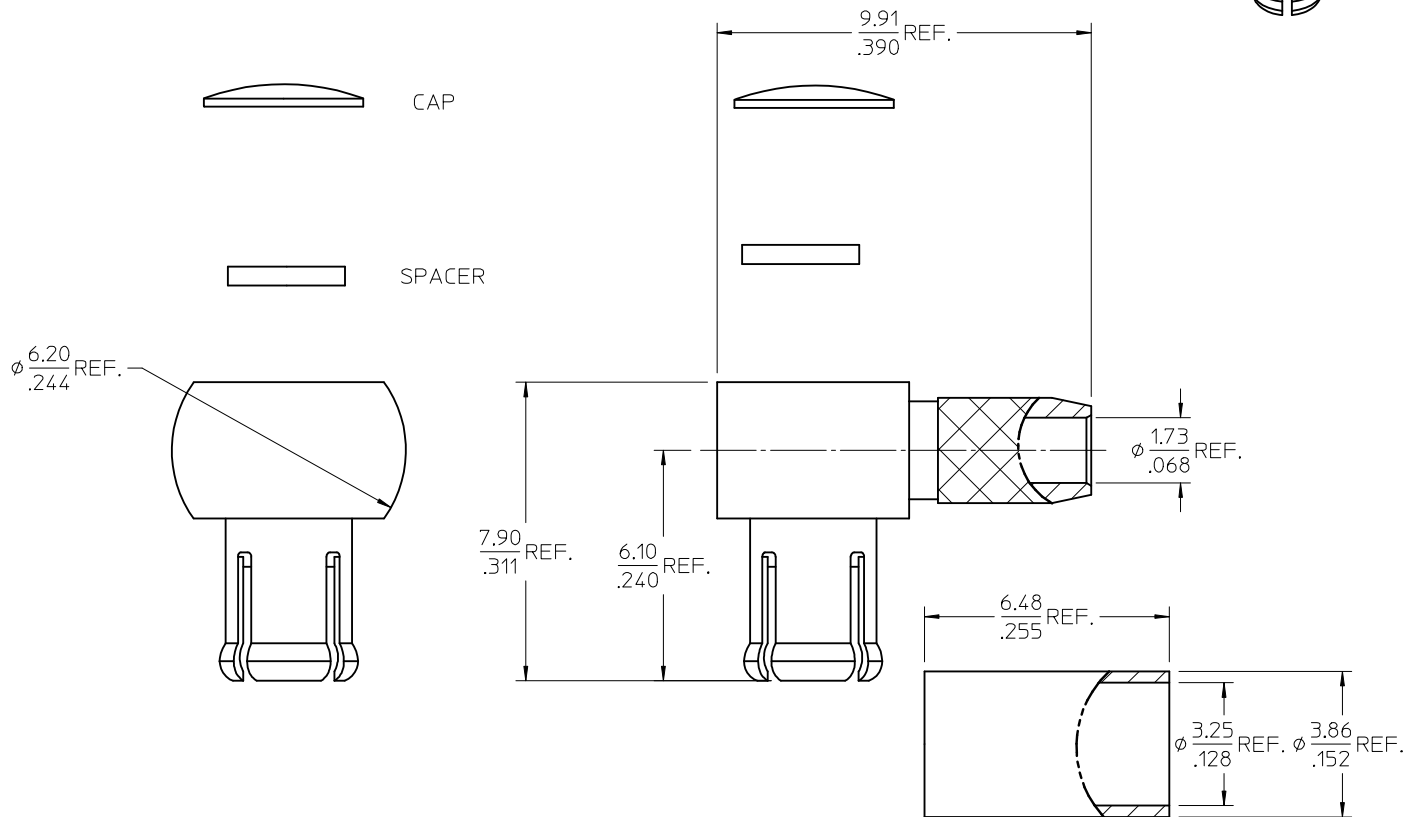
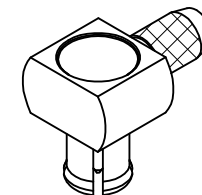
MATERIALS AND FINISHES

BODY, CAP, CRIMP TUBE BRASS  
PLATED SEE TABLE

INSULATOR, SPACER TEFLON

CONTACT BRASS  
PLATED SEE TABLE

OUTER CONTACT BERYLLIUM COPPER  
PLATED SEE TABLE



AS-89678-8590	ASSY INSTRUCTIONS
PS-89675-1760	PRODUCT SPEC.
CECC 22 220	INTERFACE
SPECIFICATION	DESCRIPTION

73415-3641	NICKEL	NICKEL	Au 5 u"	NICKEL	NICKEL
73415-3640	Au 10 u"	Au 10 u"	Au 30 u"	Au 10 u"	Au 10 u"
PART NO.	BODY PLATED	OC PLATED	PIN PLATED	CAP PLATED	TUBE PLATED
DIM X	-	-	-	-	-

REDRAW AND ADDED P/N: -3641 PER RF15-E037 EC NO: URF2015-0079 DRWNLIN 2014/09/10 CHKD: APPR: YCHENG 2014/09/12	QUALITY SYMBOLS	GENERAL TOLERANCES (UNLESS SPECIFIED)	DIMENSION STYLE	SCALE	DESIGN UNITS	THIRD ANGLE PROJECTION
	▽=0	mm INCH	MM/IN	10:1	METRIC	
	▽=0	4 PLACES ± --- ± ---	DRAWN BY DATE	TITLE MCX, PLUG R/A FOR RG179 CABLE 75 OHMS MCX-PC/RA <b>molex</b> DOCUMENT NO. SD-73415-364 SHEET NO. 1 OF 1		
	▽=0	3 PLACES ± --- ± ---	CHECKED BY DATE			
	2 PLACES ± --- ± ---	VINCENT 2014/09/10				
	1 PLACE ± --- ± ---	APPROVED BY DATE				
	0 PLACE ± --- ± ---	YCHENG 2014/09/12				
	ANGULAR ± 2 °	DRAFT WHERE APPLICABLE MUST REMAIN WITHIN DIMENSIONS	MATERIAL NO. SEE TABLE			
			SIZE C THIS DRAWING CONTAINS INFORMATION THAT IS PROPRIETARY TO MOLEX INCORPORATED AND SHOULD NOT BE USED WITHOUT WRITTEN PERMISSION			