

ZONE	REV	REASON DESCRIPTION	DATE	DRAWN	APP'VD	DATE
	01	Initial Release per DCN 13775	2/25/02	DT	DT	2/27/02
	02	Change per DCN 14229	9/17/02	DT	DT	9/17/02

CONFIDENTIAL

This document is the property of Xilinx Incorporated and contains information, which is confidential and proprietary to Xilinx. No part of this document may be copied, reproduced or disclosed to third parties without the written consent of Xilinx Incorporated.



TITLE:

**Tray, JEDEC L/P, BGA
23 mm x 23 mm**

TOLERANCES



.X .XX .XXX

Unless otherwise specified,
dimensions are in inches.

**SIZ
E**

A

DRAWING NUMBER

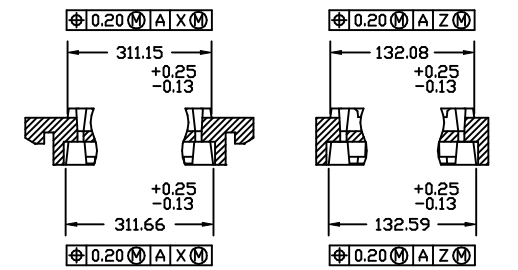
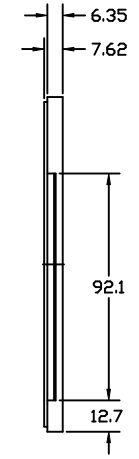
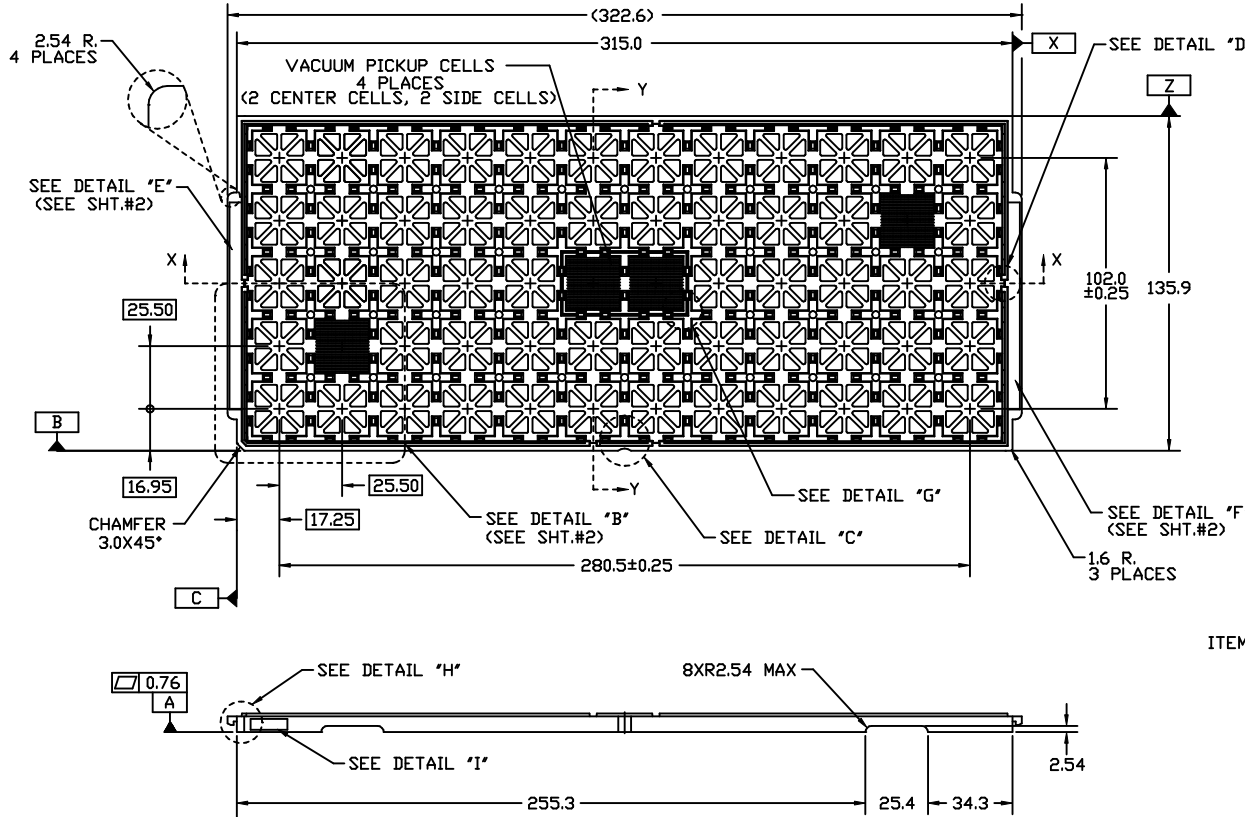
SIT0089

REV.

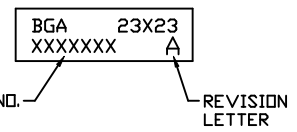
02

SCALE

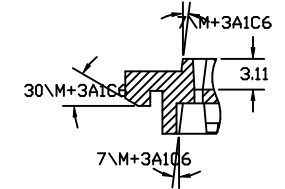
SHEET 0 OF 2



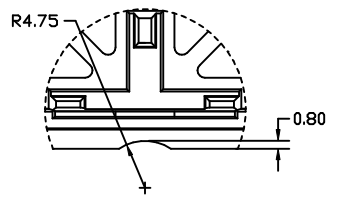
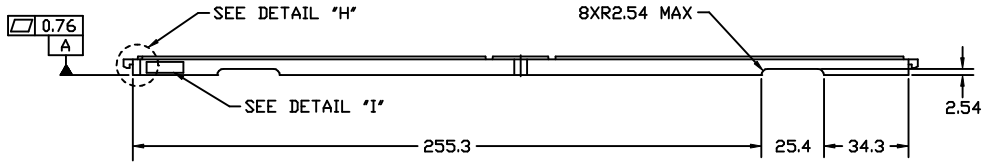
SECTION "X-X" SECTION "Y-Y"
 TRAY STACKING DETAIL
 SCALE : 3/1



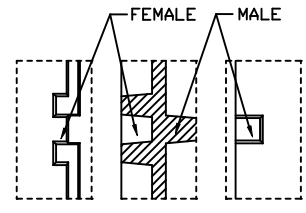
DETAIL "I"



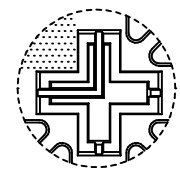
DETAIL "H"
 SCALE : 4/1



DETAIL "C"
 SCALE : 4/1



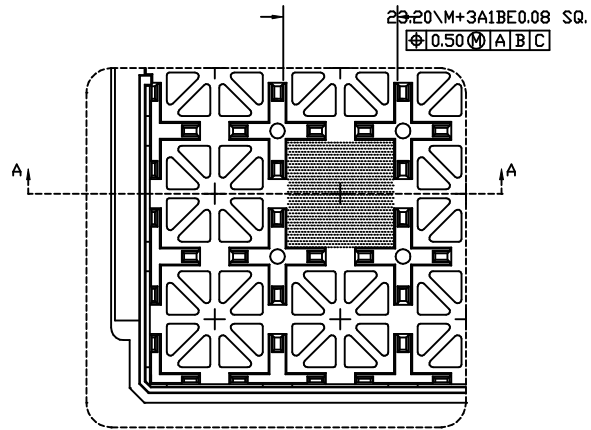
SLIP-LOCK DETAILS
 DETAIL "D"
 SCALE : 4/1



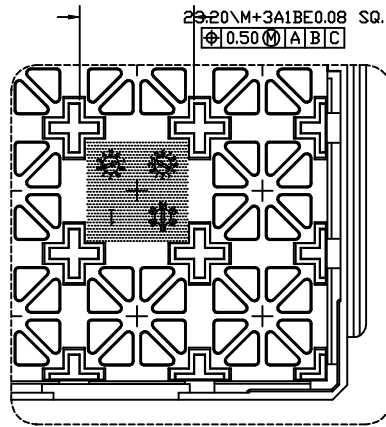
BOTTOM VIEW
 DETAIL "G"
 SCALE : 4/1

NOTE 1. ESD-SURFACE RESISTIVITY SHALL BE $\geq 1 \times 10^6$, $< 1 \times 10^8$ OHMS/SQUARE PER EIA, JEDEC, ACH TRAY SPECIFICATIONS.
 2. CONFORM TO EIA-541

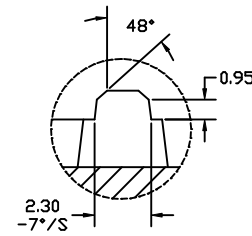
UNLESS OTHERWISE SPECIFIED ALL DIMENSIONS ARE IN MM STANDARD TOLERANCES ON:		DESIGNED BY Daewon	DATE 01/21/02			
DECIMALS X ± 0.25 XX ± 0.13 XXX ± 0.13		DRAWN David Tan	DATE 09/10/02			
ANGULAR $\pm 1^\circ$		MATRIX 5x12=60 pockets		TITLE TRAY, JEDEC L/P, BGA 23mm x 23mm		
BAKEABLE, MPPD BLACK, 150°C MAX Daewon Part No: 1F1-2323-919 Rev A Daewon Dwg. No: JBL-2323-1.78T-P				SIZE A	DWG NO SIT0089	REV 02
SCALE NTS		SHEET 1 OF 2				



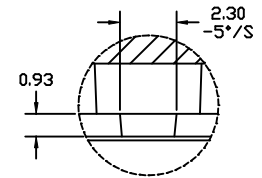
TOP VIEW
DETAIL "B"
SCALE : 2/1
(FROM SHT.#1)



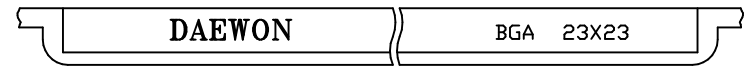
BOTTOM VIEW
DETAIL "B"
SCALE : 2/1
(FROM SHT.#1)



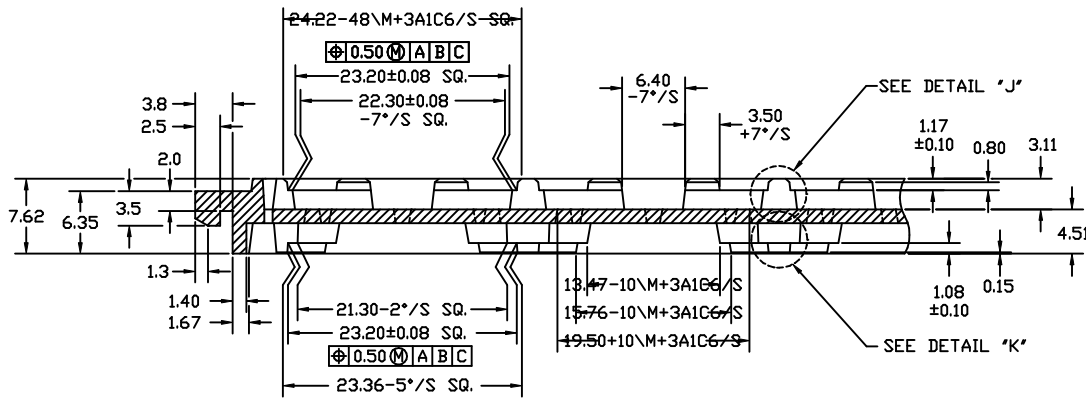
DETAIL "J"
SCALE : 10/1



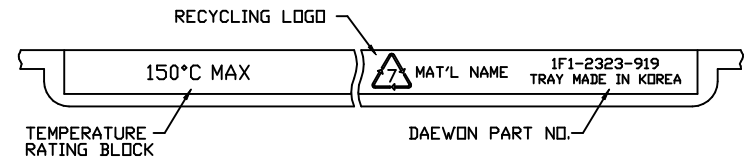
DETAIL "K"
SCALE : 10/1



DETAIL "E"
(FROM SHT.#1)



SECTION "A-A"
SCALE : 4/1



DETAIL "F"
(FROM SHT.#1)

UNLESS OTHERWISE SPECIFIED ALL DIMENSIONS ARE IN MM STANDARD TOLERANCES ON: DECIMALS X ± 0.25 XX ± 0.13 XXX ± 0.13 ANGULAR 41°	DESIGNED BY	Daewon	DATE	01/21/02
	DRAWN	David Tan	DATE	09/10/02
	MATRIX 5x12=60 pockets			
BAKEABLE, MPPD BLACK, 150°C MAX Daewon Part No: 1F1-2323-919 Rev A Daewon Dwg. No: JBL-2323-1.78T-P				



TITLE			TRAY, JEDEC L/P, BGA 23mm x 23mm	
SIZE	DWG NO			REV
A	SIT0089			02
SCALE	NTS			SHEET 2 OF 2