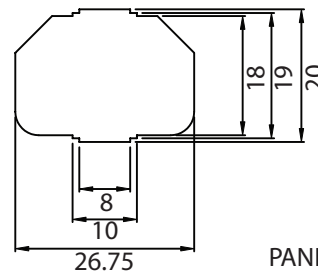
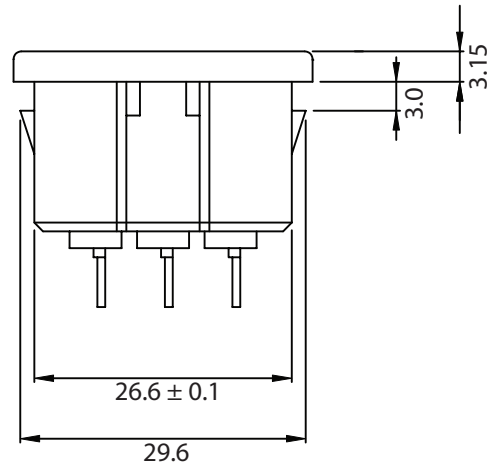
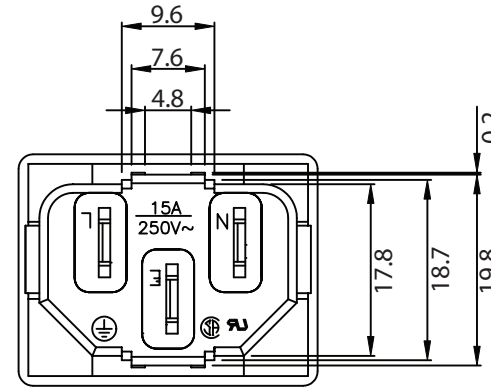
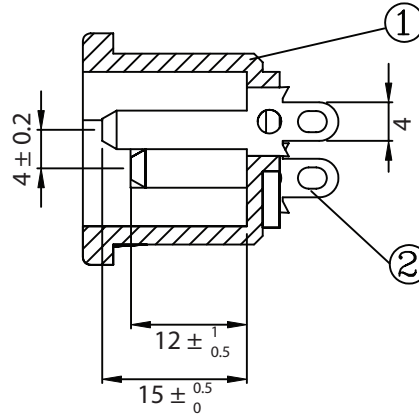
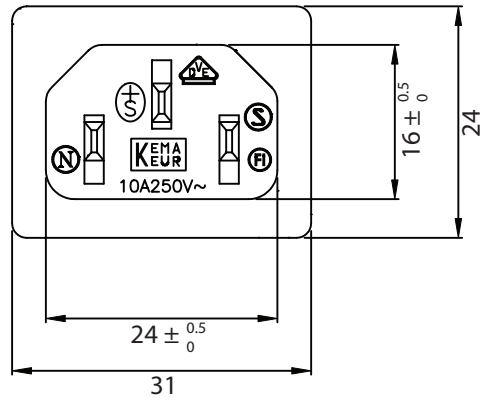
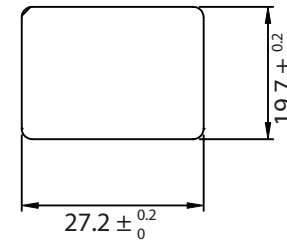


THESE DRAWINGS ARE THE PROPERTY OF QUALTEK ELECTRONICS AND NOT TO BE REPRODUCED FOR OR COMMUNICATED TO A THIRD PARTY WITHOUT THE EXPRESS WRITTEN PERMISSION OF AN OFFICER OF QUALTEK ELECTRONICS.

REVISION			
REV.	DESCRIPTION	DATE	APPROVED
B	RoHS Compliancy	06-01-06	DP



PANEL CUTOUT



CONTROLLED

NOTES:

RATING:

UL, CSA: 15A 250V AC

VDE: 10A 250V AC

APPROVALS: UL, CSA, VDE

PANEL THICKNESS: 3.0mm

RoHS COMPLIANT

2	Contact PIN Bronze Strip t=2mm Tin-Plated	3			
1	Body Insulator PC 141R Black Color	1			
Dim range (mm)		Tolerance +/- (mm)		Qualtek Electronics Corp. PPC DIVISION Part Number: 701W-30/50 RoHS Compliant	
0-1	0.15	Description: AC RECEPTACLE			
1-6	0.20	UNIT: mm		REV. B	
6-18	0.30	Drawn / Date		Checked / Date	
18-50	0.50	B.ZHANG		05-01-02	
50-120	0.70	05-01-02		Approved / Date	
120-250	0.90	JZH		05-01-02	
250-500	1.20	05-01-02		JZH / 05-01-02	