

ATLANTIC VERSION TERMINATOR INTERFACE ADAPTER	PART NUMBER	REVISION	DESCRIPTION	FEED TYPE	APPLICATOR STYLE CONVERSION CHART						
					CONVERT TO	PART NUMBERS REQUIRED					
	2151200-1	F	FINE CRIMP HEIGHT ADJUST	MECHANICAL	PNEUMATIC FEED	2119950-1	1338685-1	5-18022-5	2119641-1	2119799-1	2063440-1
	2151200-2	F	FINE CRIMP HEIGHT ADJUST	PNEUMATIC	SERVO LATCH PLATE	2119951-1	-	8-2151200-5	1901094-3	-	2168400-6 (QUANTITY 2)
					SMART APPLICATOR	2161326-1	-	8-2151200-4	-	-	
					MECHANICAL FEED	2119949-1	1338685-1	5-18022-5	2119653-1	-	-
	2151200-5	F	FINE CRIMP HEIGHT ADJUST	SERVO LATCH PLATE	SERVO LATCH PLATE	2119951-1	-	8-2151200-5	1901094-3	-	2168400-6 (QUANTITY 2)
					SMART APPLICATOR	2161326-1	-	8-2151200-4	-	-	
	2151200-6	F	NON-CRIMP HEIGHT ADJUST	SERVO LATCH PLATE	MECHANICAL FEED	2119949-1	1338685-1	5-18022-5	2119653-1	-	-
PNEUMATIC FEED					2119950-1	1338685-1	5-18022-5	2119641-1	2119799-1	2063440-1	
2151200-7	F	FINE CRIMP HEIGHT ADJUST	NONE	-	-	-	-	-	-	-	
7-2151200-7	C	CRIMP TOOLING KIT	-	-	-	-	-	-	-	-	

APPLICATOR DATA		
CRIMP	SIZE	TYPE
WIRE	1.78 mm [.070]	F
INSUL	2.29 mm [.090]	O

APPLICATOR INSTRUCTIONS
408-10389

TERMINAL DATA: TE TERMINAL		TE CRIMP SPECIFICATION	
TERMINAL NAME: AMP MCP4.8K			
WIRE STRIP LENGTH		INSULATION DIAMETER RANGE	
3.00-3.60 mm [.118-.142 IN]		Ø1.10-1.60 mm [.043-.063 IN]	
TERMINAL APPLICATION SPECIFICATION	114-18388		13
TERMINALS APPLIED			
TE TERMINAL	TE TERMINAL	TE TERMINAL	TE TERMINAL
1241400-1			

TERMINAL DATA: TE TERMINAL		TE CRIMP SPECIFICATION	
TERMINAL NAME: STANDARD POWER TIMER CONTACT TYPE A			
WIRE STRIP LENGTH		INSULATION DIAMETER RANGE	
2.90-3.50 mm [.114-.138 IN]		Ø1.15-1.60 mm [.045-.063 IN]	
TERMINAL APPLICATION SPECIFICATION	114-18037		13
TERMINALS APPLIED			
TE TERMINAL	TE TERMINAL	TE TERMINAL	TE TERMINAL
964322-1			

WIRE SIZE	CRIMP HEIGHT mm [INCH]	CRIMP HEIGHT REFERENCE SETTING
0.50mm2	1.26+/-0.05 [.050+/- .002]	3.6
0.35mm2	1.19+/-0.03 [.047+/- .001]	4.4
0.25mm2	1.15+/-0.03 [.045+/- .001]	4.8
0.20mm2	1.13+/-0.03 [.044+/- .001]	5.0

WIRE SIZE	CRIMP HEIGHT mm [INCH]	CRIMP HEIGHT REFERENCE SETTING
0.50mm2	1.26+/-0.03 [.050+/- .001]	3.6
0.35mm2	1.19+/-0.03 [.047+/- .001]	4.4
0.25mm2	1.15+/-0.03 [.045+/- .001]	4.8
0.20mm2	1.13+/-0.03 [.044+/- .001]	5.0

*WARNING
ON INSTALLATION, SET WIRE DISC, ITEM 40 TO LARGEST WIRE SIZE SETTING. USE OF SETTINGS BELOW MINIMUM REQUIRED CRIMP HEIGHT SETTING WILL CAUSE DAMAGE TO CRIMP TOOLING.

- 1 RECOMMENDED SPARE PARTS
- 2 GREASE BEARING SURFACES LIGHTLY
- 3 LUBRICATE DAILY PER THE APPLICATOR INSTRUCTION SHEET SUPPLIED WITH THE APPLICATOR.
- 4 APPLICATOR SPECIFIC DATA TO BE ENTERED INTO BLANK MEMORY CHIP AT ASSEMBLY. SEE BELOW FOR PART NUMBER:
MECHANICAL FEED WITH "SMART APPLICATOR" CONVERSION: 8-2151200-4
PNEUMATIC FEED WITH "SMART APPLICATOR" CONVERSION: 8-2151200-4
SERVO FEED WITH "FINE CRIMP HEIGHT ADJUST": 8-2151200-5
SERVO FEED WITH "NON-CRIMP HEIGHT ADJUST": 8-2151200-6
- 5 ADJUSTMENT OF THE STRIPPER MAY BE REQUIRED WHEN MOVING THE APPLICATOR BETWEEN BENCH AND LEADMAKER APPLICATIONS.
- 6 APPLY PART NUMBER 1-23419-5 LOCTITE TO THREADS OF ITEMS 50, 62. APPLY PART NUMBER 2-23419-6 LOCTITE TO THREADS OF ITEMS 242. FOR -6 ONLY APPLY PART NUMBER 1-23419-5 LOCTITE TO THREADS OF ITEMS 37, 50.
- 7 GREASE THREADS, GROOVE AND O-RING ON ITEMS 35 & 252.
- 8 MAGNET, ITEM 166 MUST BE ORIENTED CORRECTLY IN ORDER TO PROPERLY ACTUATE THE COUNTER.
- 9 CRIMP HEIGHT REFERENCE SETTING WAS THE SETTING USED WHEN THE APPLICATOR WAS QUALIFIED AT THE FACTORY. ADJUSTMENT MAY BE NECESSARY WHEN RUNNING APPLICATOR IN THE FIELD.
- 10 SPARE FEED CAM STORAGE LOCATION REFER TO INSTRUCTION SHEET FOR ADDITIONAL INFORMATION.
- 11 TO CONVERT THE APPLICATOR TO A NON-CARRIER CUTTING STYLE, REMOVE ITEM 13 AND ATTACH TO THE LOCATION ON THE BACK SIDE OF THE HOUSING. REFER TO INSTRUCTION SHEET FOR ADDITIONAL INFORMATION.
- 12 WHEN ASSEMBLING -6 NON-CRIMP HEIGHT ADJUST APPLICATOR USE SHIM PACK 2119957-2 TO ALIGN APPLICATOR'S MAXIMUM WIRE CRIMP HEIGHT AT NORMAL TERMINATOR SHUT HEIGHT
- 13 FEED REQUIRES ADJUSTMENT WHEN CHANGING TERMINALS.
TERMINAL 1241400 FEED: 17mm [.669 IN]
TERMINAL 964322 FEED: 16mm [.630 IN]

-	-	1	-	-	-	2119957-2	APPLICATOR SHIM PACK	260
-	1	-	1	1	1	8-21084-0	O-RING, .676 ID, .070 DIA. MAT.	252
-	-	-	-	1	-	2119640-1	PUSH ROD, AIR FEED	250
-77	-7	-6	-5	-2	-1	PART NO	DESCRIPTION	ITEM NO

ATLANTIC VERSION
Shown on sheets 1 of 4 & 2 of 4
(Pacific version shown on sheets 3 of 4 & 4 of 4)

SET UP GAUGE		LOC	DIST	REVISIONS					
2119599-1		A	66	P	LTN	DESCRIPTION	DATE	DWN	APVD
				D		ECR-13-004944	19MAR2013	RK	GB
				E		ECR-14-006386	30APR2014	JH	TE
				F		ECR-15-004484	20MAR2015	JH	JT

-	-	-	-	1	-	2079988-1	BUSHING, LCH5-12, MISUMI	249
-	-	-	-	1	-	2119641-1	FEED CAM, AIR FEED	248
-	1	-	1	1	1	2119798-1	DETENT PIN	247
-	1	-	1	1	1	1-22279-3	SPRING, COMPRESSION	246
-	-	1	-	-	-	2119758-1	RAM, AMP STYLE, SIDE FEED, NON-ADJ.	245
-	1	1	1	1	1	2119082-5	CAM, SNAIL, INSULATION ADJUSTMENT	244
-	1	1	1	1	1	2079764-1	WASHER, WAVE SPRING, CREST-TO-CREST	243
-	1	1	1	1	1	2119083-1	RETAINER, INSULATION DIAL	242
-	1	1	1	1	1	7-18023-7	SCR, SKT HD CAP M3 X 4.0	241
-	-	2	2	-	-	2168400-6	SHCS, LOW HEAD, RoHS, M5 X 16	240
-	-	-	-	-	1	2119580-1	MECHANICAL FEED ASSEMBLY	239
-	-	-	-	1	-	2063440-1	AIR FEED MODULE	238
-	-	1	1	-	-	2119740-2	TAG, IDENTIFICATION	213
-	-	1	1	-	-	1901094-3	SPACER, FEEDER	198
-	1	1	1	1	1	993111-1	PIN, SLOTTED SPRING 3.0 X 20.0	177
-	1	1	1	1	1	8-22280-7	SPRING, COMPRESSION	176
-	1	1	1	1	1	1752353-2	GUIDE PIN, HOLDDOWN	175
-	1	1	1	1	1	1901680-2	GUIDE PIN, HOLDDOWN	174
-	-	-	-	2	-	21045-3	RING, RETAIN, EXTERN, 3/16 CRESCENT	172
-	1	1	1	1	1	994969-1	MAGNET, RARE EARTH HIGH ENERGY	166
-	REF	REF	REF	REF	REF	994970-2	COUNTER, MAGNETIC	164
-	-	-	-	1	-	240638-1	SPRING, FEED FINGER	163
-	-	-	-	1	-	3-23627-7	PIN, RETAIN, GRVD, 3/16 X .854	137
-	-	-	-	1	-	2119799-1	HOLDER, FEED FINGER, AF	136
-	-	REF	REF	-	-	SEE NOTE 4	MEMORY CHIP, PROGRAMMED	135
-	-	1	1	-	-	1633743-1	SERVO FEED LATCH ASM	133
-	1	1	1	1	1	1-18028-2	WASHER, FLAT, REG M4	119
-	-	REF	REF	-	-	2119944-1	FEED FINGER ASSEMBLY, SF	117
-	1	1	1	1	1	455888-5	SPACER, CRIMPER	82
-	1	1	1	1	1	2119956-1	DOCUMENTATION PACKAGE	71
-	1	-	-	1	1	2119740-1	TAG, IDENTIFICATION	67
-	2	2	2	2	2	2168078-1	SCREW, DRIVE, RH, RoHS, 2 x .188	66
-	1	-	1	1	1	2119793-1	LIMITER, ADJUSTMENT BOLT	63
-	3	-	3	3	3	992763-5	SCR, SET, SOC, CONE POINT, M3 X 4.0	62
-	1	1	1	1	1	2079383-4	SCR, BHSC, RoHS (M4 X 8)	60
-	-	-	-	1	1	5-18022-5	SCR, HEX HD CAP, M4 X 6.0	59
-	-	-	-	1	1	1338685-1	PAWL, FEED	56
-	4	4	4	4	4	2168400-1	SHCS, LOW HEAD, RoHS, M4 X 12	54
-	1	1	1	1	1	1-5018030-0	NUT, HEX, REG, RoHS, M3.5	52
-	1	1	1	1	1	1901681-1	HOLDDOWN, TERMINAL	51
-	1	1	1	1	1	3-1752354-4	STANDOFF, HOLD-DOWN	50
-	-	-	-	1	2	18023-9	SCR, SKT HD CAP M4 X 6.0	49
-	-	-	-	1	-	2119652-1	FEED CAM, PRE FEED	48
-	-	-	-	1	-	2119653-1	FEED CAM, POST FEED	47
-	1	1	1	1	1	2119656-9	APPLICATOR BASIC ASSEMBLY, SF	46
-	1	-	1	1	1	2119370-1	RAM, AMP STYLE, SIDE FEED	44
-	1	1	1	1	1	2079383-7	SCR, BHSC, RoHS (M8 X 25)	41
-	1	-	1	1	1	2119645-1	DISC, NUMBERED FA WIRE ADJUSTMENT	40
-	1	-	1	1	1	2119957-1	APPLICATOR SHIM PACK	39
-	1	1	1	1	1	2119644-1	RAM WASHER, PRECISION	38
-	1	1	1	1	1	2119085-1	FA HEAD, ATLANTIC STYLE	37
-	1	-	1	1	1	2119092-1	BOLT, ADJUSTMENT	35
-	1	1	1	1	1	1-1752356-5	SUPPORT, TERMINAL	34
-	2	2	2	2	2	2079383-5	SCR, BHSC, RoHS (M4 X 20)	33
-	1	1	1	1	1	2161328-1	HEX HEAD, FLANGED, M5 X 8mm LONG	32
-	1	1	1	1	1	1320908-3	SPACER, STRIP GUIDE	30
-	1	1	1	1	1	2119959-2	ASSEMBLY, STRIP GUIDE	29
-	1	1	1	1	1	1-455888-0	SPACER, CRIMPER	28
-	1	1	1	1	1	1320928-2	STRIP GUIDE	24
-	1	1	1	1	1	2168083-2	SCR, SKT HD CAP, RoHS, M4 X 8.0	21
-	1	1	1	1	1	1-18028-2	WASHER, FLAT, REG M4	20
-	1	1	1	1	1	2119533-1	STRIPPER, SIDE FEED	19
-	1	1	1	1	1	2119806-1	INSERT, SHEAR	13
-	1	1	1	1	1	3-22280-3	SPRING, COMPRESSION	12
-	1	1	1	1	1	1-356885-4	STOP, SHEAR	11
-	1	1	1	1	1	2119805-1	SHEAR HOLDER, FRONT	10
-	1	1	1	1	1	462006-6	FLOATING SHEAR, FRONT	9
1	1	1	1	1	1	7-1333203-2	ANVIL, COMBINATION	8
-	1	1	1	1	1	2119757-8	DEPRESSOR, SHEAR	5
-	1	1	1	1	1	238011-9	BLOCK, CRIMPER SPACER	4
1	1	1	1	1	1	1-2119784-8	CRIMPER, INSULATION O PREMIUM	3
-	1	1	1	1	1	1-455888-1	SPACER, CRIMPER	2
1	1	1	1	1	1	3-456404-2	CRIMPER, WIRE PREMIUM	1
-77	-7	-6	-5	-2	-1	PART NO	DESCRIPTION	ITEM NO

DIMENSIONS:		TOLERANCES UNLESS OTHERWISE SPECIFIED:		MATERIAL:		FINISH:		WEIGHT:	
mm		0 PLC	±.001						
		1 PLC	±.005						
		2 PLC	±.010						
		3 PLC	±.015						
		4 PLC	±.020						
		ANGLES	±.0001						

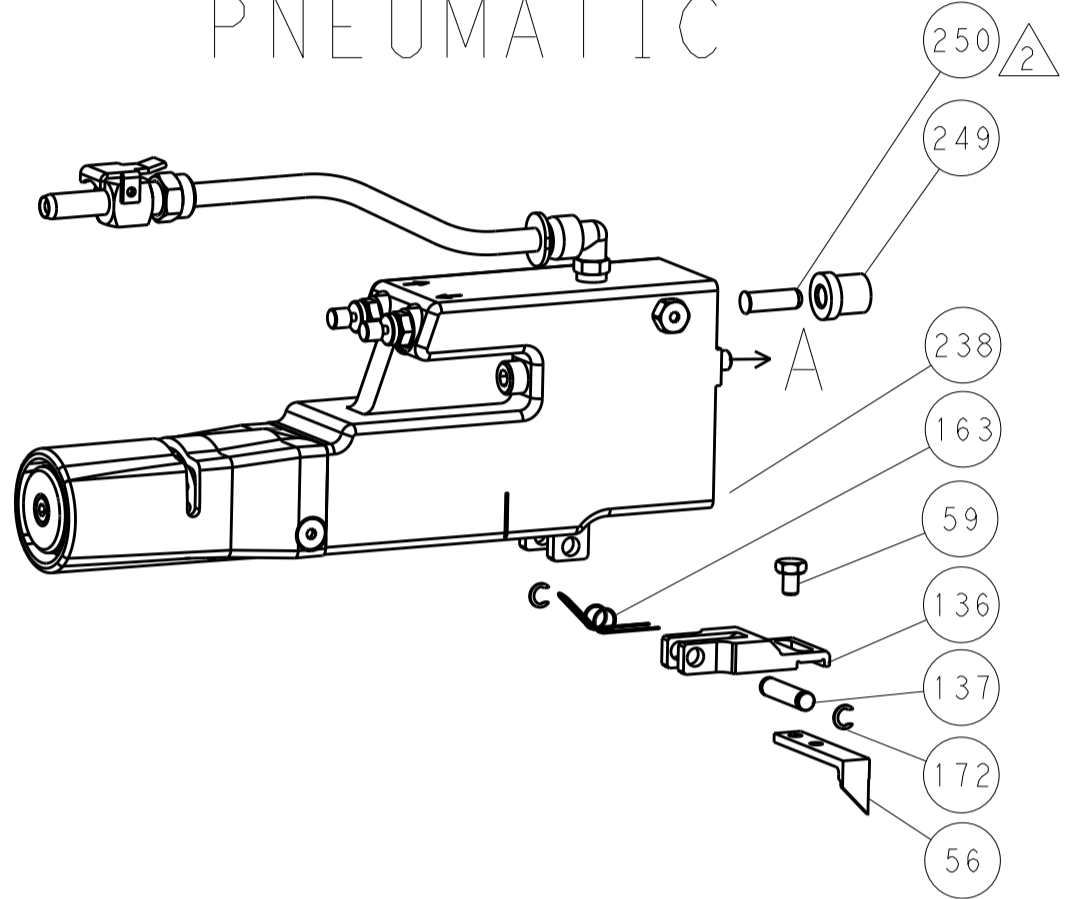
Customer Accessible Production Drawing SCALE 1:2 SHEET 1 of 4 REV F

LOC	DIST	REV	DATE	BY	APPV
A	66				

FEED TYPE MECHANICAL



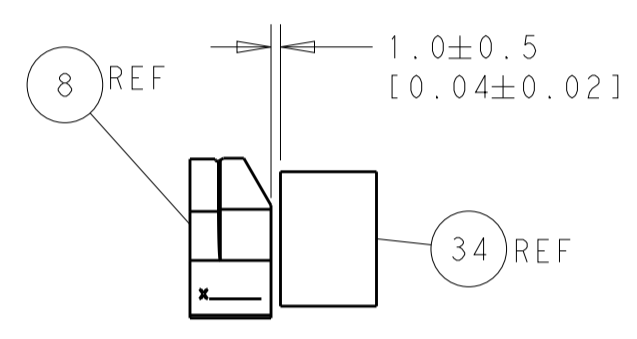
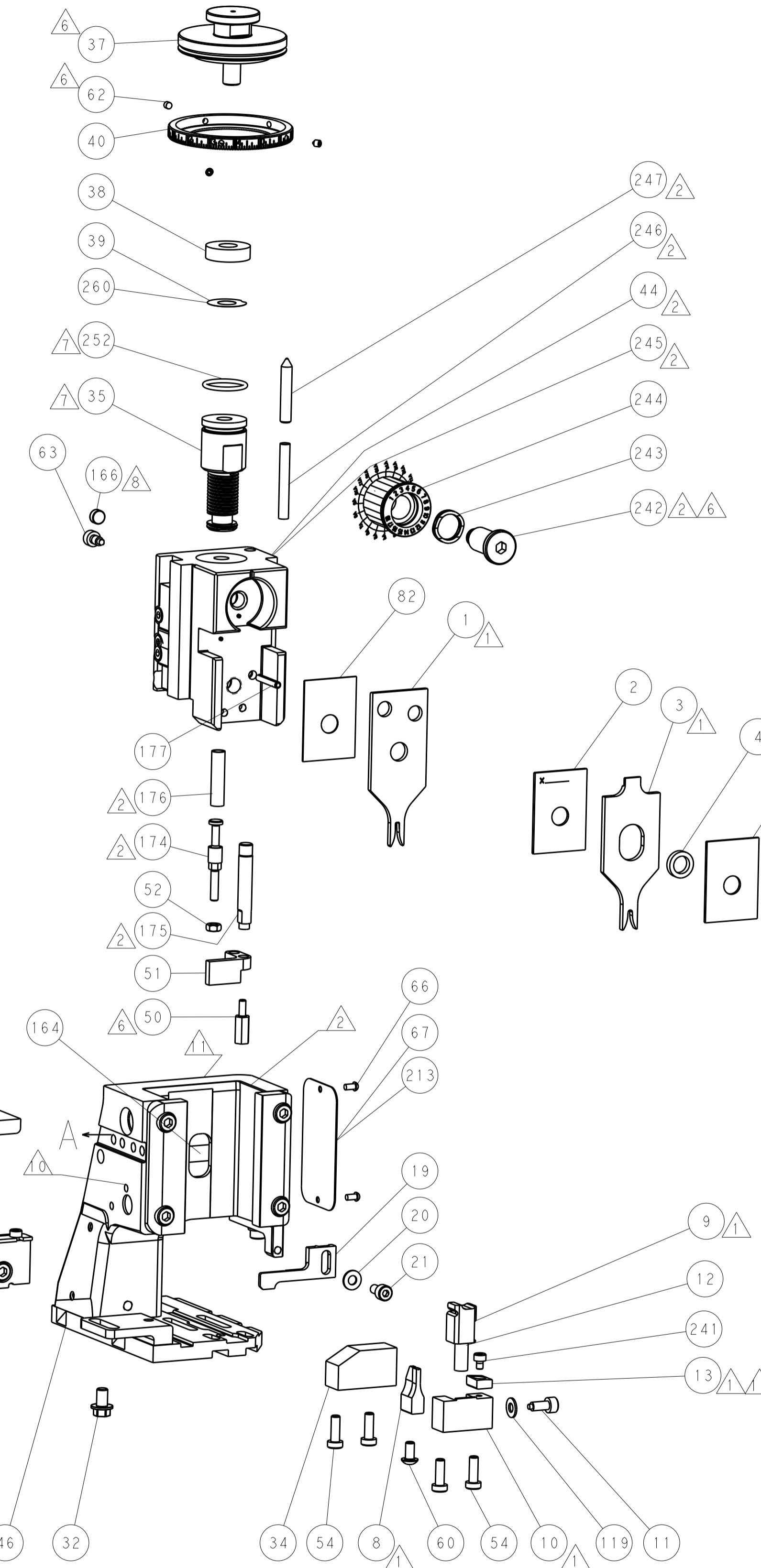
PNEUMATIC



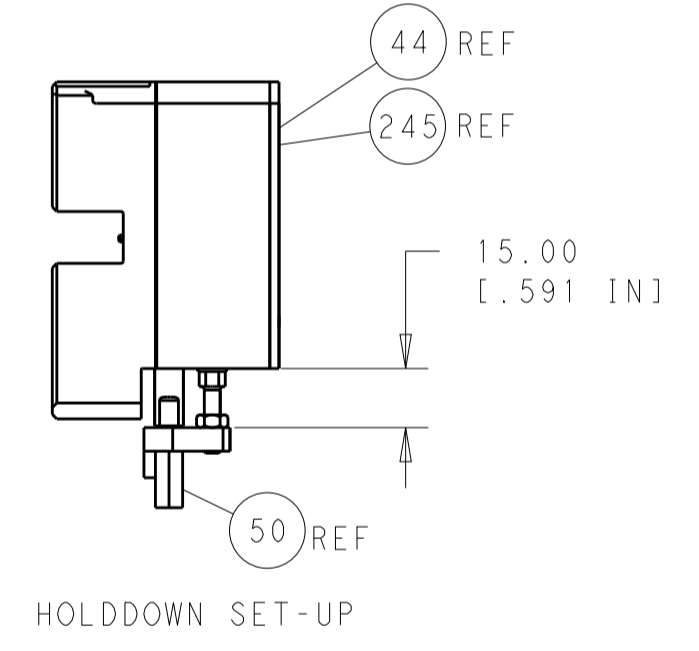
SERVO LATCH PLATE



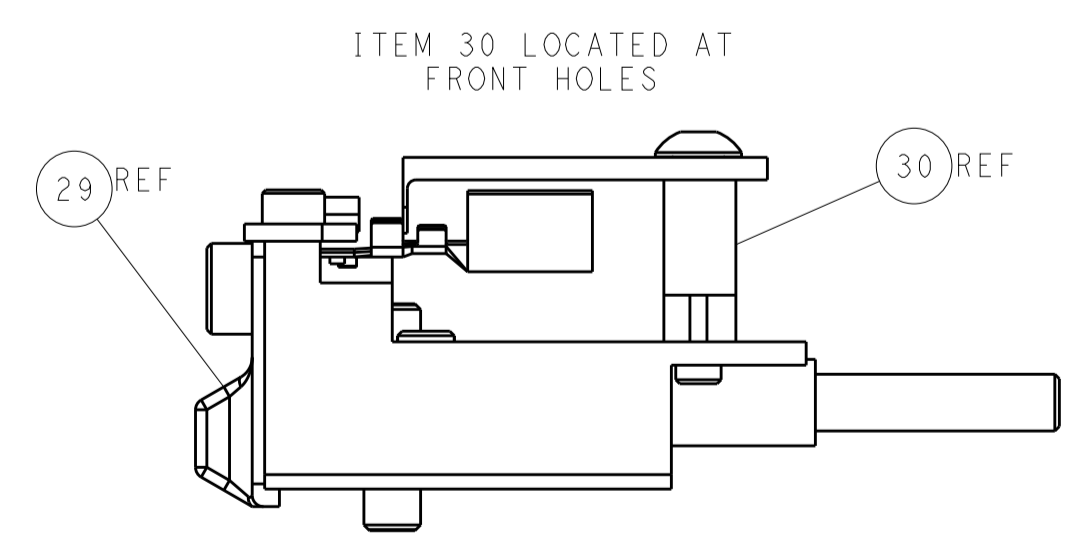
CAM POSITIONS



TERMINAL SUPPORT LOCATION



HOLDDOWN SET-UP



ITEM 30 LOCATED AT FRONT HOLES

FEED TRACK POSITION GUIDE BY INSULATION BARREL

ATLANTIC VERSION
 Shown on sheets 1 of 4 & 2 of 4
 (Pacific version shown on sheets 3 of 4 & 4 of 4)

DIMENSIONS:		TOLERANCES UNLESS OTHERWISE SPECIFIED:		DWN C. MOYER 23AUG2011		TE Connectivity	
mm	0 PLC ±0.5	1 PLC ±0.5	2 PLC ±0.13	3 PLC ±0.013	4 PLC ±0.0013	APVD T. ELBIN 23AUG2011	Harrisburg, PA 17105-3608
MATERIAL:		FINISH:		NAME		Ocean Side Feed Applicator	
				SIZE CAGE CODE DRAWING NO		RESTRICTED TO	
				A1 00779 C=2151200			
				Customer Accessible Production Drawing		SCALE 1:2 SHEET 2 of 4 REV F	

PACIFIC VERSION TERMINATOR INTERFACE ADAPTER	PART NUMBER	REVISION	DESCRIPTION	FEED TYPE	APPLICATOR STYLE CONVERSION CHART						
					CONVERT TO	PART NUMBERS REQUIRED					
						PNEUMATIC FEED	2119950-1	1338685-1	5-18022-5	2119641-2	2119799-1
	2-2151200-1	F	FINE CRIMP HEIGHT ADJUST	MECHANICAL	SERVO LATCH PLATE	2119951-1	-	8-2151200-5	1901094-3	-	2168400-6 (QUANTITY 2)
					SMART APPLICATOR	2161326-1	-	8-2151200-4	-	-	
	2-2151200-2	F	FINE CRIMP HEIGHT ADJUST	PNEUMATIC	MECHANICAL FEED	2119949-1	1338685-1	5-18022-5	2119653-2	-	-
					SERVO LATCH PLATE	2119951-1	-	8-2151200-5	1901094-3	-	2168400-6 (QUANTITY 2)
2-2151200-5	F	FINE CRIMP HEIGHT ADJUST	SERVO LATCH PLATE	NONE	MECHANICAL FEED	2119949-1	1338685-1	5-18022-5	2119653-2	-	-
					PNEUMATIC FEED	2119950-1	1338685-1	5-18022-5	2119641-2	2119799-1	2063440-1
2-2151200-7	F	FINE CRIMP HEIGHT ADJUST	NONE	-	-	-	-	-	-	-	-
7-2151200-7	C	CRIMP TOOLING KIT	-	-	-	-	-	-	-	-	-

APPLICATOR DATA		
CRIMP	SIZE	TYPE
WIRE	1.78 mm [.070]	F
INSUL	2.29 mm [.090]	O
APPLICATOR INSTRUCTIONS 408-10389		

TERMINAL DATA: TE TERMINAL		TE CRIMP SPECIFICATION
TERMINAL NAME: AMP MCP4.8K		
WIRE STRIP LENGTH 3.00-3.60 mm [.118-.142 IN]		INSULATION DIAMETER RANGE Ø1.10-1.60 mm [.043-.063 IN]
TERMINAL APPLICATION SPECIFICATION 114-18388		-
TERMINALS APPLIED		
TE TERMINAL	TE TERMINAL	TE TERMINAL
1241400-1		

TERMINAL DATA: TE TERMINAL		TE CRIMP SPECIFICATION
TERMINAL NAME: STANDARD POWER TIMER CONTACT TYPE A		
WIRE STRIP LENGTH 2.90-3.50 mm [.114-.138 IN]		INSULATION DIAMETER RANGE Ø1.15-1.60 mm [.045-.063 IN]
TERMINAL APPLICATION SPECIFICATION 114-18037		-
TERMINALS APPLIED		
TE TERMINAL	TE TERMINAL	TE TERMINAL
964322-1		

WIRE SIZE	CRIMP HEIGHT mm [INCH]	CRIMP HEIGHT REFERENCE SETTING
0.50mm2	1.26+/-0.05 [.050+/- .002]	3.6
0.35mm2	1.19+/-0.03 [.047+/- .001]	4.4
0.25mm2	1.15+/-0.03 [.045+/- .001]	4.8
0.20mm2	1.13+/-0.03 [.044+/- .001]	5.0

WIRE SIZE	CRIMP HEIGHT mm [INCH]	CRIMP HEIGHT REFERENCE SETTING
0.50mm2	1.26+/-0.03 [.050+/- .001]	3.6
0.35mm2	1.19+/-0.03 [.047+/- .001]	4.4
0.25mm2	1.15+/-0.03 [.045+/- .001]	4.8
0.20mm2	1.13+/-0.03 [.044+/- .001]	5.0

- RECOMMENDED SPARE PARTS
- GREASE BEARING SURFACES LIGHTLY
- 3. LUBRICATE DAILY PER THE APPLICATOR INSTRUCTION SHEET SUPPLIED WITH THE APPLICATOR.
- APPLICATOR SPECIFIC DATA TO BE ENTERED INTO BLANK MEMORY CHIP AT ASSEMBLY. SEE BELOW FOR PART NUMBER:
 MECHANICAL FEED WITH "SMART APPLICATOR" CONVERSION: 8-2151200-4
 PNEUMATIC FEED WITH "SMART APPLICATOR" CONVERSION: 8-2151200-4
 SERVO FEED WITH "FINE CRIMP HEIGHT ADJUST": 8-2151200-5
- 5. ADJUSTMENT OF THE STRIPPER MAY BE REQUIRED WHEN MOVING THE APPLICATOR BETWEEN BENCH AND LEADMAKER APPLICATIONS.
- APPLY PART NUMBER 1-23419-5 LOCTITE TO THREADS OF ITEMS 50, 62. APPLY PART NUMBER 2-23419-6 LOCTITE TO THREADS OF ITEMS 242.
- GREASE THREADS, GROOVE AND O-RING ON ITEMS 139 & 152.
- MAGNET MUST BE ORIENTED CORRECTLY IN ORDER TO PROPERLY ACTUATE THE COUNTER.
- CRIMP HEIGHT REFERENCE SETTING WAS THE SETTING USED WHEN THE APPLICATOR WAS QUALIFIED AT THE FACTORY. ADJUSTMENT MAY BE NECESSARY WHEN RUNNING APPLICATOR IN THE FIELD.
- SPARE FEED CAM STORAGE LOCATION REFER TO INSTRUCTION SHEET FOR ADDITIONAL INFORMATION.
- TO CONVERT THE APPLICATOR TO A NON-CARRIER CUTTING STYLE, REMOVE ITEM 13 AND ATTACH TO THE LOCATION ON BACK SIDE OF THE HOUSING. REFER TO INSTRUCTION SHEET FOR ADDITIONAL INFORMATION.
- FEED REQUIRES ADJUSTMENT WHEN CHANGING TERMINALS.
 TERMINAL 1241400 FEED: 17mm [.669 IN]
 TERMINAL 964322 FEED: 16mm [.630 IN]

***WARNING**
 ON INSTALLATION, SET WIRE DISC, ITEM 40 TO LARGEST WIRE SIZE SETTING. USE OF SETTINGS BELOW MINIMUM REQUIRED CRIMP HEIGHT SETTING WILL CAUSE DAMAGE TO CRIMP TOOLING.

PACIFIC VERSION
 Shown on sheets 3 of 4 & 4 of 4
 (Atlantic version shown on sheets 1 of 4 & 2 of 4)

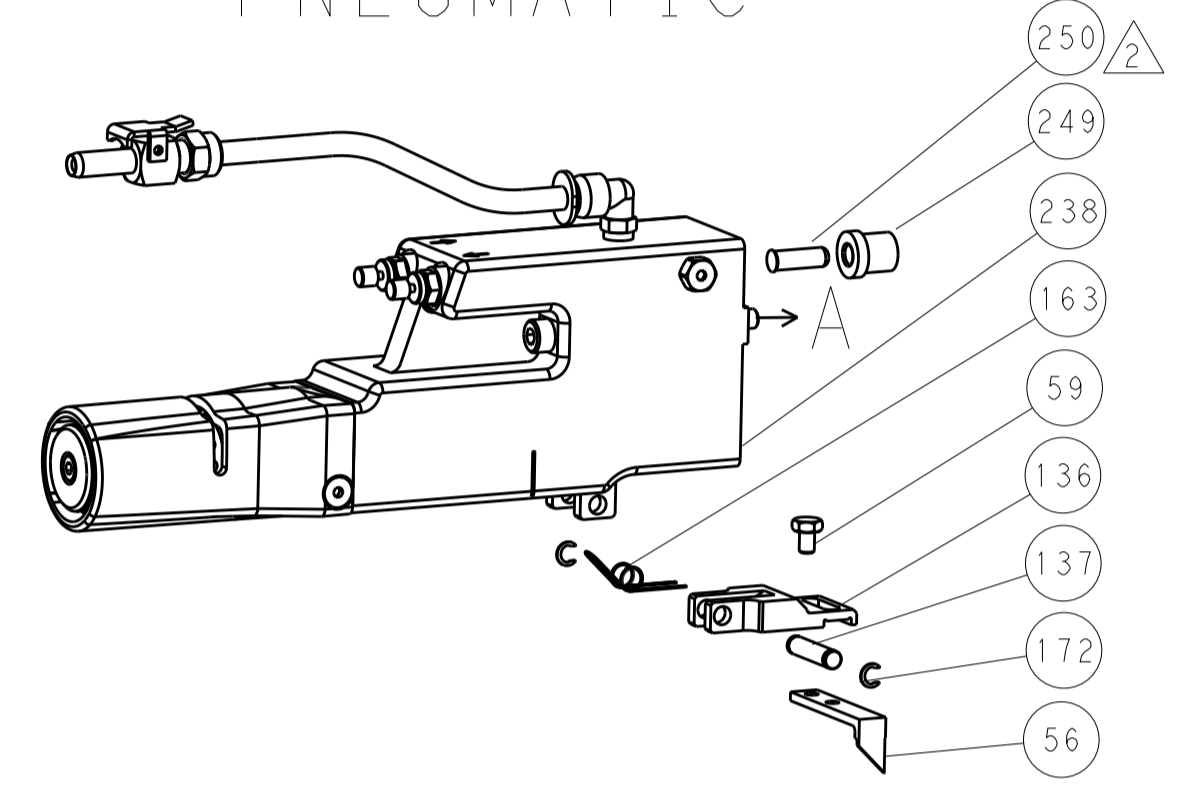
SET UP GAUGE 2119599-1			LOC A	DIST 66	REVISIONS					
P	LTN	DESCRIPTION	DATE	OWN	APVD					
-	-	SEE SHEET 1	-	-	-					
-	1	1	1	1	2119782-1	FINE ADJUST HEAD ASM, PACIFIC STYLE	251			
-	-	-	1	-	2119640-1	PUSH ROD, AIR FEED	250			
-	-	-	1	-	2079988-1	BUSHING, LCH5-12, MISUMI	249			
-	1	1	1	1	1-22279-3	SPRING, COMPRESSION	246			
-	1	1	1	1	2119082-5	CAM, SNAIL, INSULATION ADJUSTMENT	244			
-	1	1	1	1	2079764-1	WASHER, WAVE SPRING, CREST-TO-CREST	243			
-	1	1	1	1	2119083-1	RETAINER, INSULATION DIAL	242			
-	1	1	1	1	7-18023-7	SCR, SKT HD CAP M3 X 4.0	241			
-	-	2	-	-	2168400-6	SHCS, LOW HEAD, RoHS, M5 X 16	240			
-	-	-	-	1	2119580-1	MECHANICAL FEED ASSEMBLY	239			
-	-	-	1	-	2063440-1	AIR FEED MODULE	238			
-	-	1	-	-	2119740-2	TAG, IDENTIFICATION	213			
-	-	1	-	-	1901094-3	SPACER, FEEDER	198			
-	1	1	1	1	993111-1	PIN, SLOTTED SPRING 3.0 X 20.0	177			
-	1	1	1	1	8-22280-7	SPRING, COMPRESSION	176			
-	1	1	1	1	1752353-2	GUIDE PIN, HOLDDOWN	175			
-	1	1	1	1	1901680-2	GUIDE PIN, HOLDDOWN	174			
-	-	-	2	-	21045-3	RING, RETAIN, EXTERN, 3/16 CRESCENT	172			
-	1	1	1	1	994969-1	MAGNET, RARE EARTH HIGH ENERGY	166			
-	REF	REF	REF	REF	994970-2	COUNTER, MAGNETIC	164			
-	-	-	1	-	240638-1	SPRING, FEED FINGER	163			
-	1	1	1	1	8-21084-1	O-RING, .801 ID, .070 DIA. MAT.	152			
-	-	-	1	-	2119641-2	FEED CAM, AIR FEED	151			
-	1	1	1	1	2119798-2	DETENT PIN	145			
-	1	1	1	1	2079383-8	SCR, BHSC, RoHS (M4 X 16)	144			
-	4	4	4	4	2168400-5	SHCS, LOW HEAD, RoHS, M4 X 20	143			
-	-	-	-	1	2119653-2	FEED CAM, POST FEED	142			
-	1	1	1	1	1-2119656-0	APPLICATOR BASIC ASSEMBLY, SF	141			
-	1	1	1	1	2119650-1	RAM, ASIAN STYLE, SIDE FEED	140			
-	1	1	1	1	2119092-2	BOLT, ADJUSTMENT	139			
-	-	-	1	-	3-23627-7	PIN, RETAIN, GRVD, 3/16 X .854	137			
-	-	-	1	-	2119799-1	HOLDER, FEED FINGER, AF	136			
-	-	REF	-	-	SEE NOTE 4	MEMORY CHIP, PROGRAMMED	135			
-	-	1	-	-	1633743-1	SERVO FEED LATCH ASM	133			
-	1	1	1	1	1-18028-2	WASHER, FLAT, REG M4	119			
-	-	REF	-	-	2119944-1	FEED FINGER ASSEMBLY, SF	117			
-	1	1	1	1	455888-5	SPACER, CRIMPER	82			
-	1	1	1	1	2119956-1	DOCUMENTATION PACKAGE	71			
-	1	-	1	1	2119740-1	TAG, IDENTIFICATION	67			
-	2	2	2	2	2168078-1	SCREW, DRIVE, RH, RoHS, 2 x .188	66			
-	1	1	1	1	2119793-1	LIMITER, ADJUSTMENT BOLT	63			
-	3	3	3	3	992763-5	SCR, SET, SOC, CONE POINT, M3 x 4.0	62			
-	-	-	1	1	5-18022-5	SCR, HEX HD CAP, M4 X 6.0	59			
-	-	-	1	1	1338685-1	PAWL, FEED	56			
-	1	1	1	1	1-5018030-0	NUT, HEX, REG, RoHS, M3.5	52			
-	1	1	1	1	1901681-1	HOLDDOWN, TERMINAL	51			
-	1	1	1	1	3-1752354-4	STANDOFF, HOLD-DOWN	50			
-	-	-	1	2	18023-9	SCR, SKT HD CAP M4 X 6.0	49			
-	-	-	-	1	2119652-1	FEED CAM, PRE FEED	48			
-	1	1	1	1	2079383-7	SCR, BHSC, RoHS (M8 X 25)	41			
-	1	1	1	1	2119645-1	DISC, NUMBERED FA WIRE ADJUSTMENT	40			
-	1	1	1	1	2119957-1	APPLICATOR SHIM PACK	39			
-	1	1	1	1	2119644-1	RAM WASHER, PRECISION	38			
-	1	1	1	1	1-1752356-5	SUPPORT, TERMINAL	34			
-	2	2	2	2	2079383-5	SCR, BHSC, RoHS (M4 X 20)	33			
-	1	1	1	1	2161328-1	HEX HEAD, FLANGED, M5 x 8mm LONG	32			
-	1	1	1	1	1320908-3	SPACER, STRIP GUIDE	30			
-	1	1	1	1	2119959-2	ASSEMBLY, STRIP GUIDE	29			
-	1	1	1	1	1-455888-0	SPACER, CRIMPER	28			
-	1	1	1	1	1320928-2	STRIP GUIDE	24			
-	1	1	1	1	2168083-2	SCR, SKT HD CAP, RoHS, M4 X 8.0	21			
-	1	1	1	1	1-18028-2	WASHER, FLAT, REG M4	20			
-	1	1	1	1	2119533-1	STRIPPER, SIDE FEED	19			
-	1	1	1	1	2119806-1	INSERT, SHEAR	13			
-	1	1	1	1	3-22280-3	SPRING, COMPRESSION	12			
-	1	1	1	1	1-356885-4	STOP, SHEAR	11			
-	1	1	1	1	2119805-1	SHEAR HOLDER, FRONT	10			
-	1	1	1	1	462006-6	FLOATING SHEAR, FRONT	9			
-	1	1	1	1	7-1333203-2	ANVIL, COMBINATION	8			
-	1	1	1	1	2119757-8	DEPRESSOR, SHEAR	5			
-	1	1	1	1	238011-9	BLOCK, CRIMPER SPACER	4			
-	1	1	1	1	1-2119784-8	CRIMPER, INSULATION O PREMIUM	3			
-	1	1	1	1	1-455888-1	SPACER, CRIMPER	2			
-	1	1	1	1	3-456404-2	CRIMPER, WIRE PREMIUM	1			
-77	-27	-25	-22	-21	PART NO	DESCRIPTION	ITEM NO			

LOC		DIST		REVISIONS			
A	66	P	LTM	DESCRIPTION	DATE	DMN	APVD
		-	-	SEE SHEET 1	-	-	-

FEED TYPE MECHANICAL



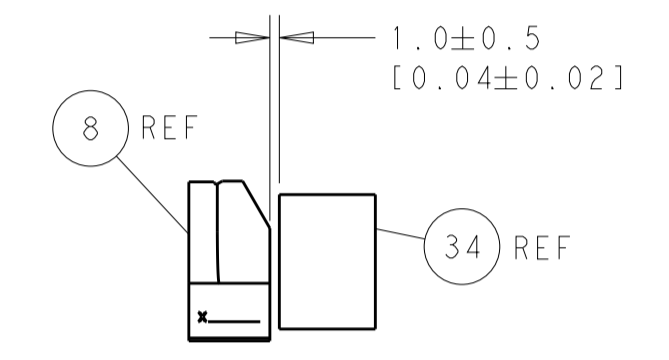
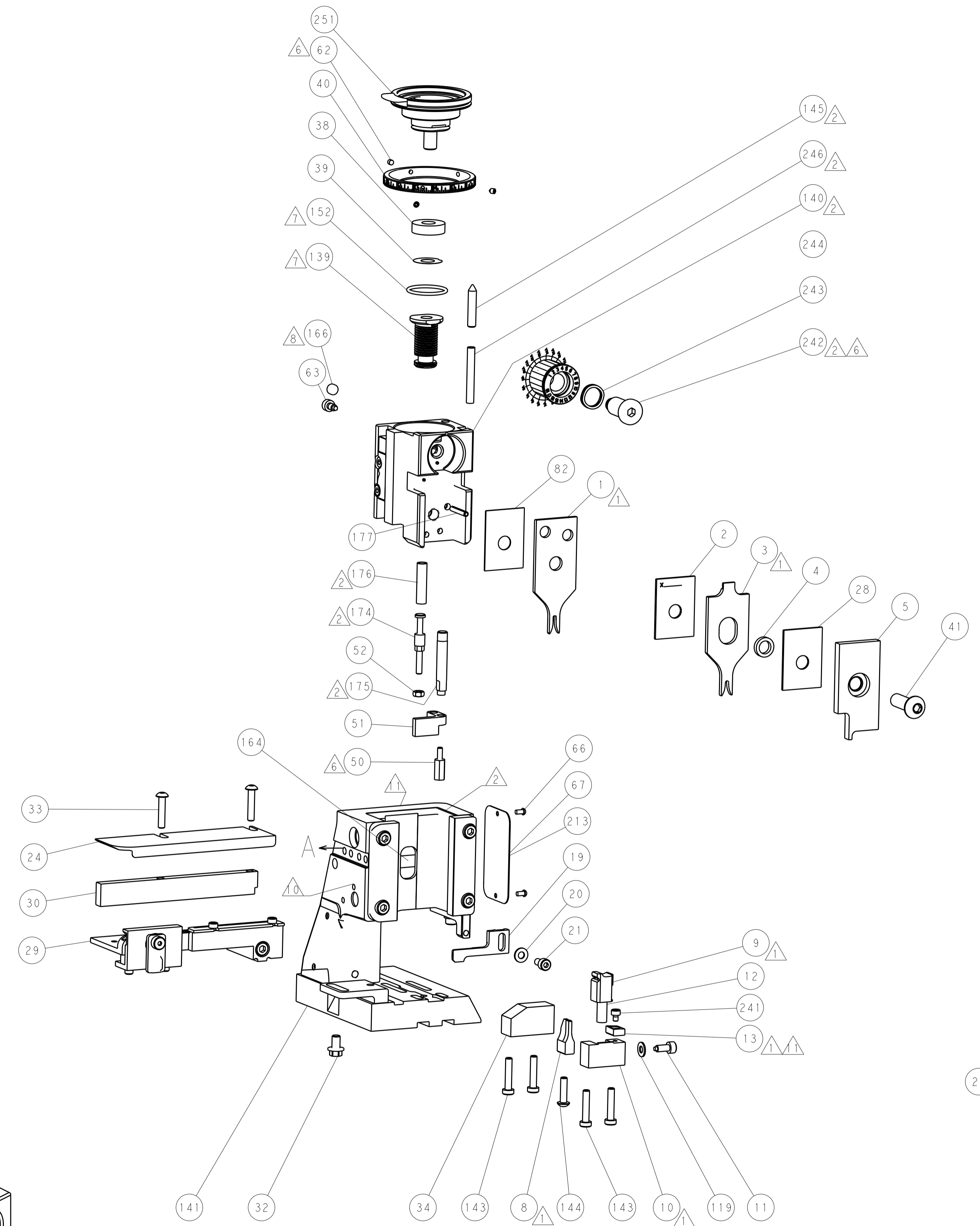
PNEUMATIC



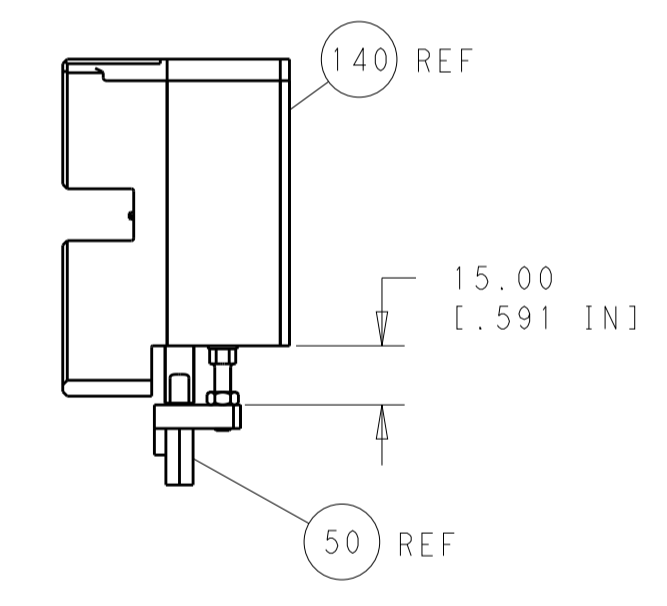
SERVO LATCH PLATE



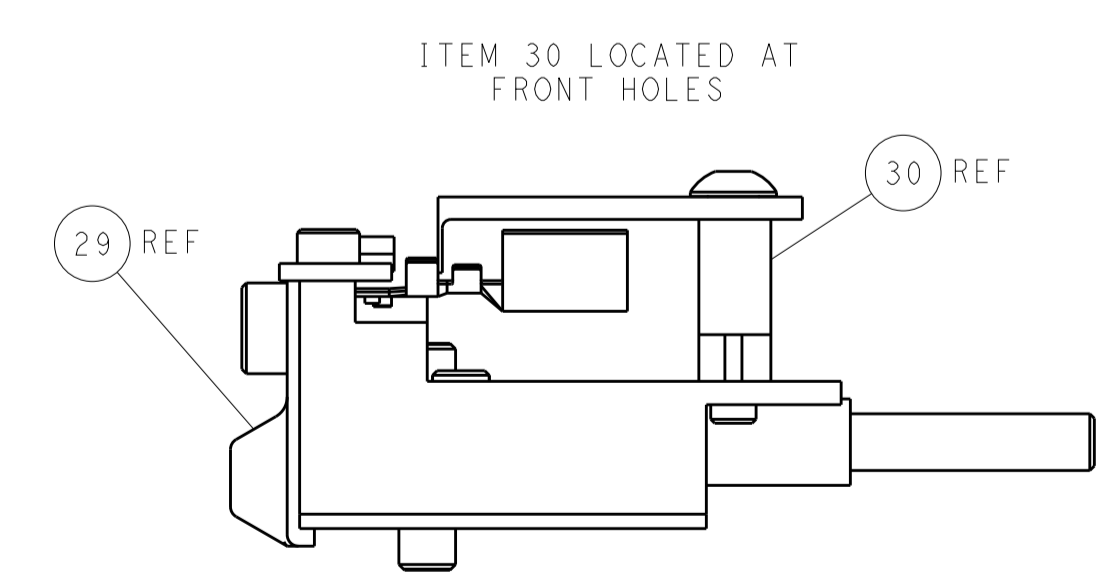
CAM POSITIONS



TERMINAL SUPPORT LOCATION



HOLDDOWN SET-UP



FEED TRACK POSITION GUIDE BY INSULATION BARREL

PACIFIC VERSION
 Shown on sheets 3 of 4 & 4 of 4
 (Atlantic version shown on sheets 1 of 4 & 2 of 4)

DIMENSIONS:		TOLERANCES UNLESS OTHERWISE SPECIFIED:		DWG: C. MOYER 23AUG2011		TE Connectivity	
mm	0 PLC ±.5	1 PLC ±0.5	2 PLC ±0.13	3 PLC ±0.013	4 PLC ±0.001	APVD: T. ELBIN 23AUG2011	Harrisburg, PA 17105-3608
MATERIAL:		FINISH:		NAME: Ocean Side Feed Applicator		RESTRICTED TO:	
				SIZE: A1		CAGE CODE: 00779	
				DRAWING NO: 2151200		SCALE: 1:2	
				SHEET: 4		REV: F	