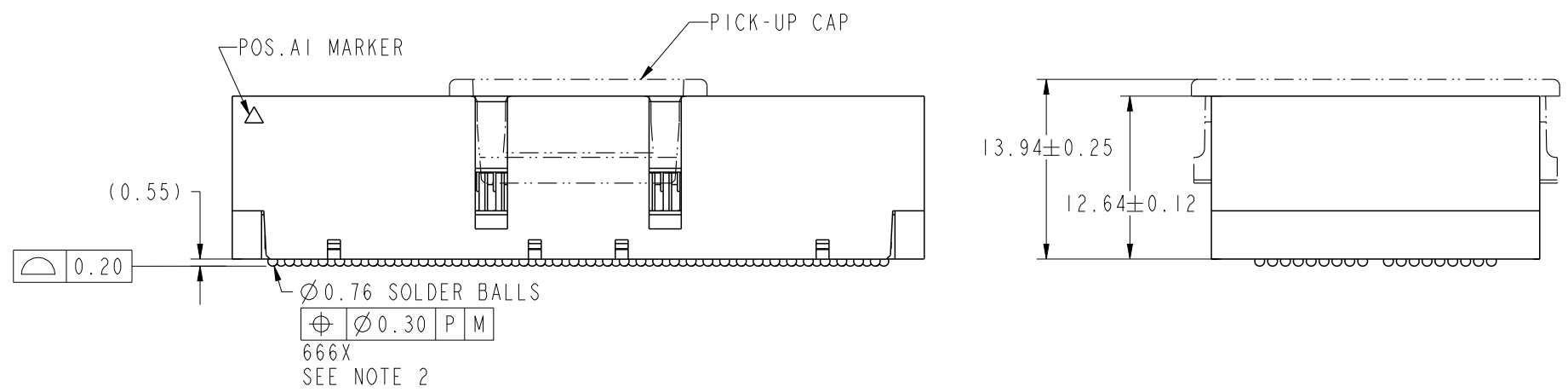
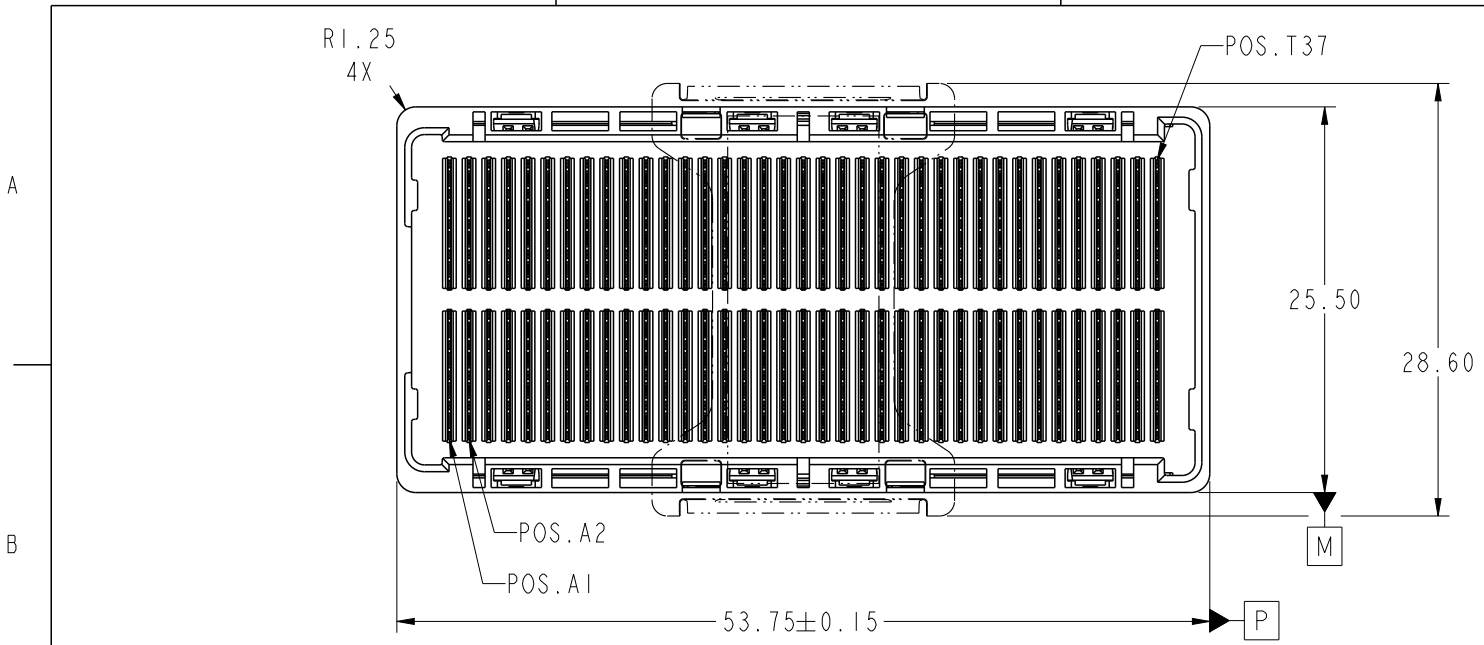


rev	ecn no	dr	date
A	V05-0321	TAB	2005-04-08
B	V06-1009	LP	2005-11-04
C	V06-0230	LP	2006-03-27
D	V06-0558	LP	2006-06-21
E	V07-0440	LP	2007-07-09
F	V08-0198	HTB	2008-04-28
G	V09-0071	PK	2009-02-24



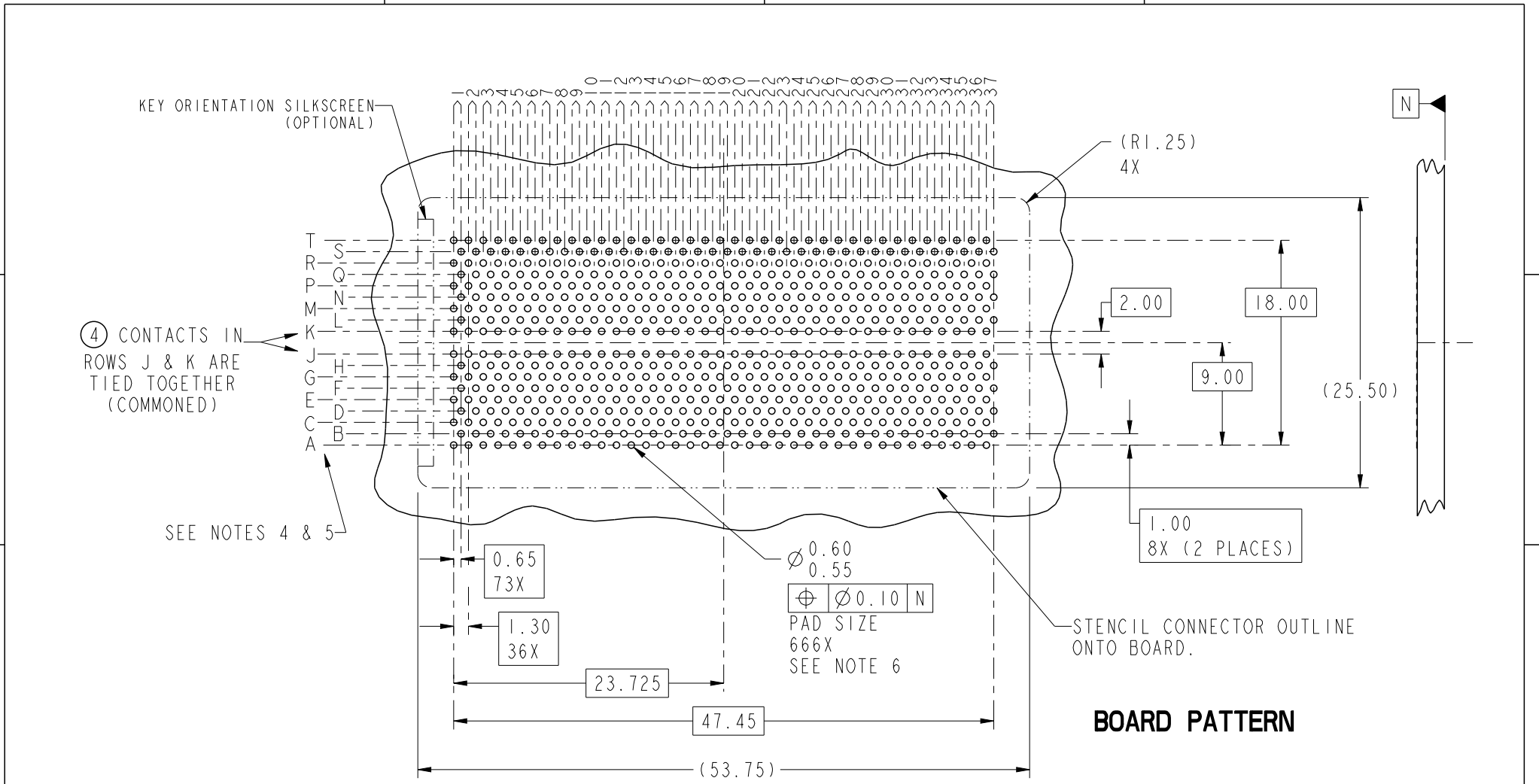
Copyright FCI.

spec ref	-	dr	Bill Lin	2010/02/02	projection 	MM 	size	A4	scale	1:1	
tolerance std	ASME Y14.5	eng	Nickor Zuo	2011/06/24			ecn no	ELX-DG-003943-1			
TOLERANCES UNLESS OTHERWISE SPECIFIED		chr	Alex Cao	2011/06/24			product family	GIG-Array		rel level	Released
surface	3.2	appr	Pei-Ming Zheng	2011/06/27			title		GIG-Array	dwg no	10055143
ASME Y14.5	linear	0.X	± 0.30	www.fci.com	cat. no.		-	Product - Customer Drw		sheet 1 of 5	
		0.XX	± 0.10		Product - Customer Drw		sheet 1 of 5				
	angular	0°	$\pm 2^\circ$		Product - Customer Drw		sheet 1 of 5				

PreE File - REV C - 2009-06-09



Copyright FCI.



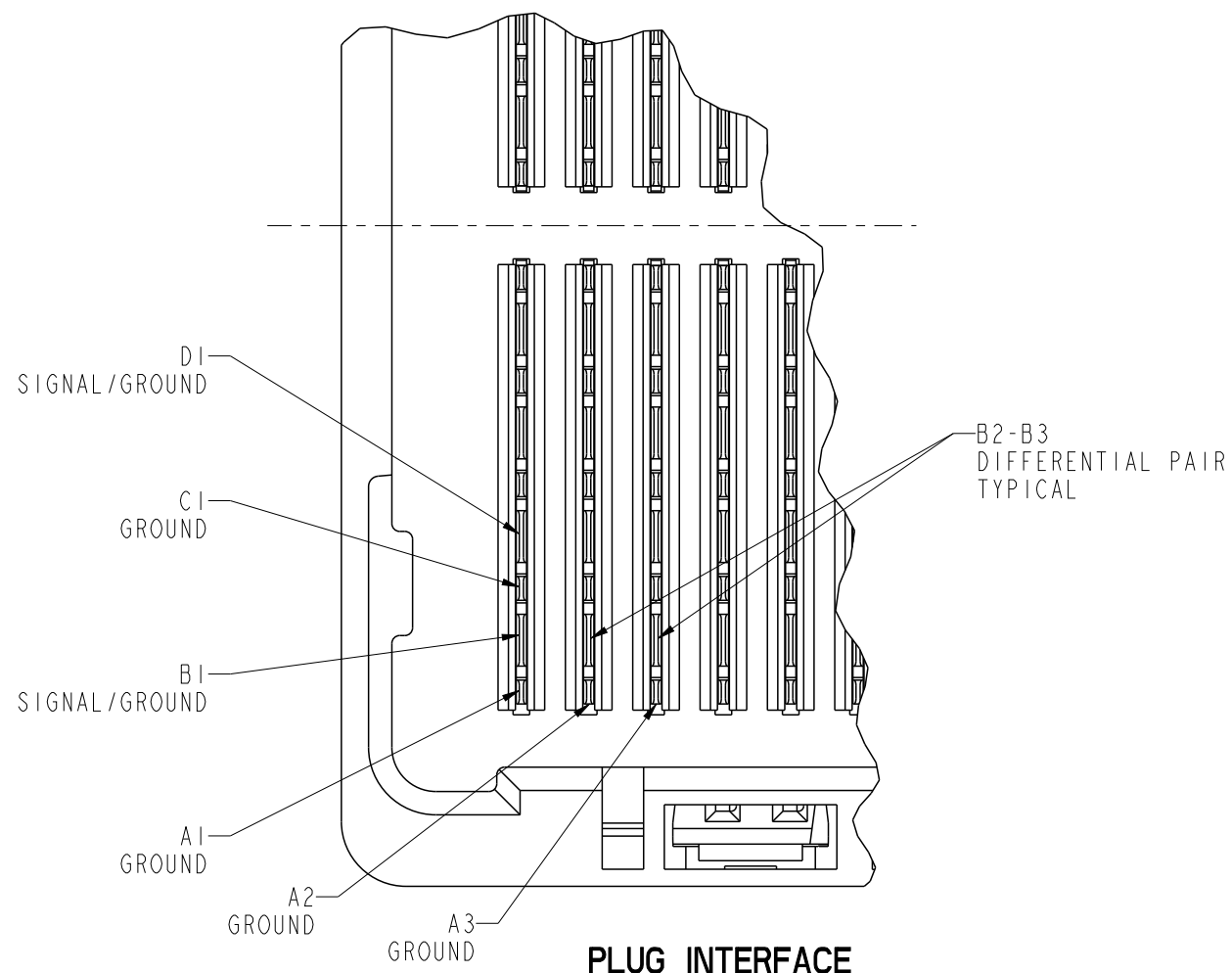
BOARD PATTERN

spec ref	-	dr	Bill Lin	2010/02/02	projection	MM	size	A4	scale	1:1			
tolerance std	ASME Y14.5	eng	Nickor Zuo	2011/06/24			ecn no		ELX-DG-003943-1				
TOLERANCES UNLESS OTHERWISE SPECIFIED		chr	Alex Cao	2011/06/24			product family		GIG-Array		rel level		Released
surface	3.2	appr	Pei-Ming Zheng	2011/06/27			GIG-Array		rel level		Released		
ASME Y14.5	linear	0.X	±0.30		title		GIG-Array		dwg no		10055143	rev	H
		0.XX	±0.10		13mm PLUG ASSY. 296 SIG. POS.								
		0.XXX	±0.05		cat. no.		-		Product - Customer Drw		sheet 2 of 5		
ASME Y14.5	angular	0°	±2°	www.fci.com									

ProjE File - REV C - 2009-06-09



Copyright FCI.

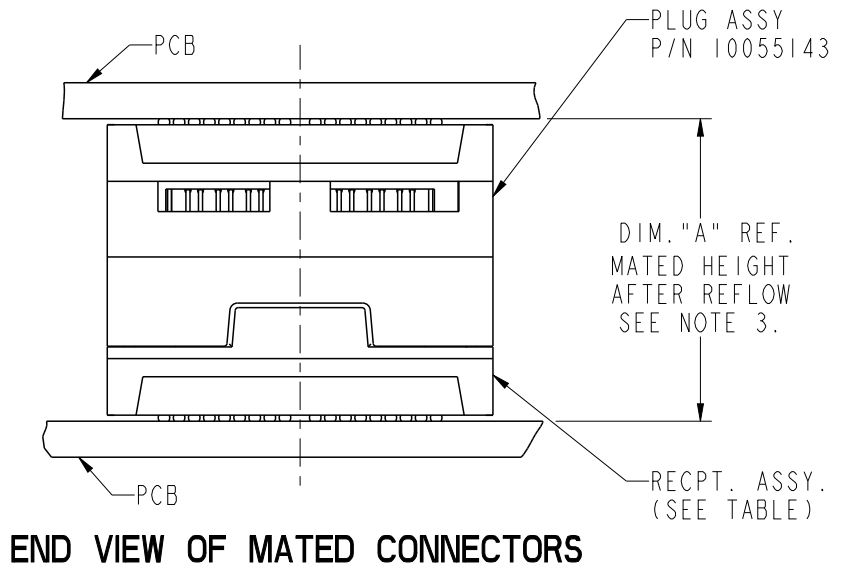
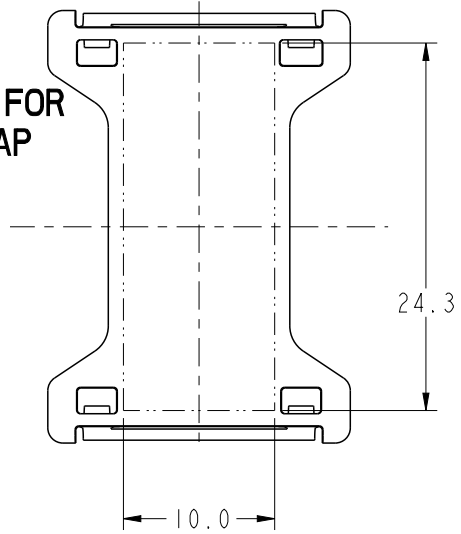


PLUG INTERFACE DESCRIPTION

spec ref		-		dr	Bill Lin	2010/02/02	projection 	MM 	size	A4	scale	1:1	
tolerance std	ASME Y14.5	TOLERANCES UNLESS OTHERWISE SPECIFIED		eng	Nickor Zuo	2011/06/24			ecn no	ELX-DG-003943-1			
				chr	Alex Cao	2011/06/24				rel level	Released		
-				appr	Pei-Ming Zheng	2011/06/27	product family		GIG-Array				
surface	3.2	linear	0.X	±0.30		title	GIG-Array		dwg no	10055143		rev	H
			0.XX	±0.10									
			0.XXX	±0.05	www.fci.com	cat. no.	-		Product - Customer Drw		sheet 3 of 5		
ASME Y14.5		angular	0°	±2°									

ProE File - REV C - 2009-06-09

FLAT AREA FOR PICK-UP CAP



END VIEW OF MATED CONNECTORS

DIM. "A"	RECPT. ASSY. P/N
28	55733
18	55701



Copyright FCI.

spec ref -		dr Bill Lin	2010/02/02	projection 	MM 	size A4	scale 1:1
tolerance std ASME Y14.5	TOLERANCES UNLESS OTHERWISE SPECIFIED		eng Nickor Zuo			2011/06/24	ecn no ELX-DG-003943-1
			chr Alex Cao			2011/06/24	
-		appr Pei-Ming Zheng	2011/06/27	product family GIG-Array		rel level Released	
surface $\sqrt{3.2}$ ASME Y14.5	linear	0.X	± 0.30	FCI 	title GIG-Array 13mm PLUG ASSY. 296 SIG. POS.	dwg no 10055143	rev H
		0.XX	± 0.10				
	angular	0°	$\pm 2^\circ$	www.fci.com	cat. no. -	Product - Customer Drw	
-		-		-		sheet 4 of 5	

PrdE File - REV C - 2009-06-09

PRODUCT NUMBER	SOLDER BALL COMPOSITION	CONTACT PLATING PERFORMANCE LEVEL
10055143-001	STANDARD (EUTECTIC)	PERFORMANCE-BASED PLATING, QUALIFIED TO MEET THE REQUIREMENTS OF FCI PRODUCT SPECIFICATION GS-12-192, INCLUDING TELCORDIA CENTRAL OFFICE Au over Ni
10055143-001LF	LEADFREE	
10055143-201	STANDARD (EUTECTIC)	
10055143-201LF	LEADFREE	

NOTES:

- ① MAT'L:
HOUSING: LCP
CONTACT: COPPER ALLOY
PLATING (CONTACT): Au OVER Ni.
UL RATING: 94 V-0
SOLDER BALL: (SEE TABLE) EUTECTIC SnPb OR LEADFREE 95.5 Sn/4Ag/0.5Cu
- ② SOLDER BALLS WILL NOT BE PERFECT SPHERICAL SHAPE DUE TO REFLOW ATTACHMENT.
- ③ MATED HEIGHT EFFECTED BY CUSTOMERS' PCB PAD SIZE, PLATING, SOLDER REFLOW PROFILE & SOLDER PASTE.
- ④ CONTACTS IN ROWS A,C,E,G,J,K,M,P,R AND T ARE SINGLE BEAM CONTACTS, TYPICALLY USED AS GROUND PINS. (NOTE: CONTACTS IN ROWS J & K ARE TIED TOGETHER [COMMONED])
- ⑤ CONTACTS IN ROWS B,D,F,H,L,N,Q AND S ARE DUAL BEAM CONTACTS, TYPICALLY USED AS SIGNAL PINS.
- ⑥ SPECIFIED POSITIONAL TOLERANCE DEFINES PAD TO PAD LOCATION WITHIN LAND PATTERN. POSITIONAL TOLERANCE OF LAND PATTERN TO FUDICIAL MARKS OR PCB DATUMS SHALL BE DEFINED BY CUSTOMER. FOR RECOMMENDED PRODUCT APPLICATION AND PCB DESIGN DETAILS, SEE DOC. NO. GS-20-016.
- ⑦ FOR PROPER APPLICATION FOLLOW FCI APPLICATION SPECIFICATION GS-20-033 LEADFREE SOLDER BALLS WILL NOT SOLDER PROPERLY IN A LEADED SOLDER PROCESS DUE TO A HIGHER REFLOW TEMPERATURE, LEADFREE PRODUCT IS THEREFORE NOT BACKWARDS COMPATIBLE WITH LEADED OR SOME SOLDERING APPLICATIONS. REFERENCE FCI APPLICATION SPECIFICATION.
- ⑧ THIS PRODUCT MEETS THE EUROPEAN UNION DIRECTIVES AND OTHER COUNTRY REGULATIONS AS DESCRIBED IN GS-22-008 PRODUCT MEETING THIS DIRECTIVE IS IDENTIFIED IN THE LOT CODE NUMBER MARKED ON EACH PART BY HAVING AN "X" IN THE SEVENTH CHARACTER POSITION.



Copyright FCI.

spec ref	-	dr	Bill Lin	2010/02/02	projection		size	A4	scale	1:1			
tolerance std	ASME Y14.5	eng	Nickor Zuo	2011/06/24			ecn no		ELX-DG-003943-1				
	TOLERANCES UNLESS OTHERWISE SPECIFIED	chr	Alex Cao	2011/06/24			product family		GIG-Array		rel level	Released	
		appr	Pei-Ming Zheng	2011/06/27			title		GIG-Array		dwg no	10055143	rev
surface	3.2	linear	0.X	±0.30	www.fci.com		cat. no.		-		Product - Customer Drw		sheet 5 of 5
			0.XX	±0.10									
			0.XXX	±0.05									
		angular	0°	±2°									