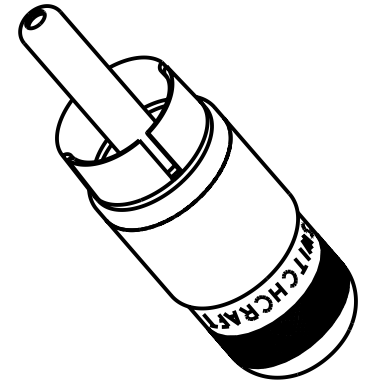
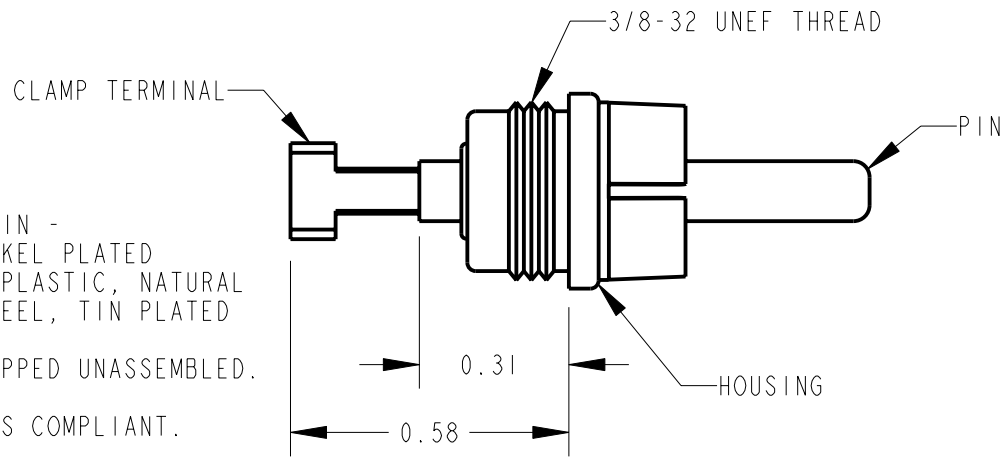
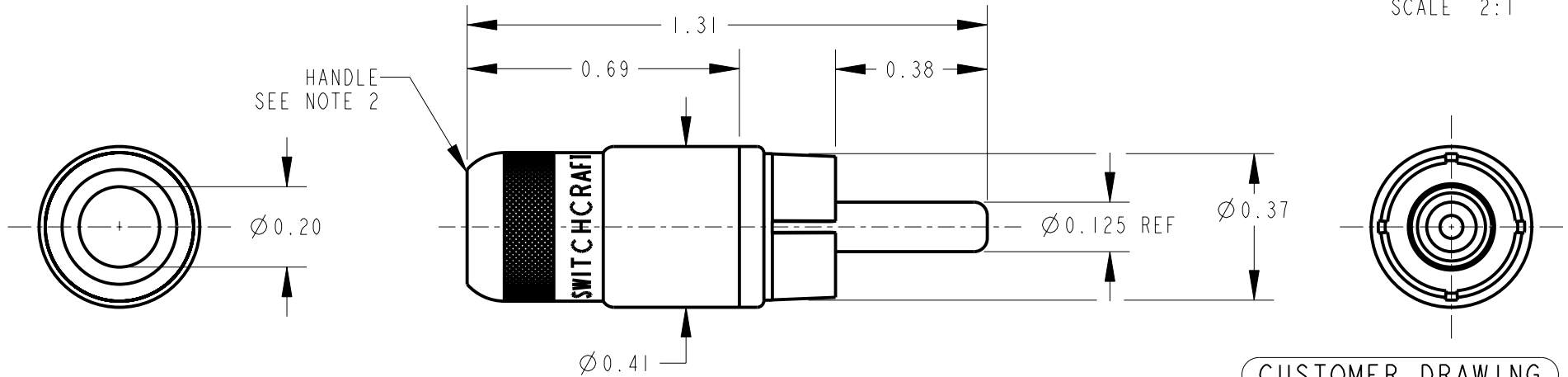


NOTES:

1. MATERIALS:  
HANDLE, HOUSING & PIN -  
COPPER ALLOY, NICKEL PLATED  
INSULATORS - THERMOPLASTIC, NATURAL  
CLAMP TERMINAL - STEEL, TIN PLATED
2. K221 HANDLE KIT SHIPPED UNASSEMBLED.
3. THIS PRODUCT IS RoHS COMPLIANT.



SCALE 2:1



CUSTOMER DRAWING

★ STAR SYMBOL DENOTES CRITICAL DIMENSION

THIS DRAWING DESCRIBES A DESIGN CONSIDERED PROPRIETARY IN NATURE, DEVELOPED AND MANUFACTURED BY SWITCHCRAFT INC. AND IS RELEASED ON A CONFIDENTIAL BASIS FOR IDENTIFICATION PURPOSES ONLY.

UNLESS OTHERWISE SPECIFIED

SIZE	WIDTH	MULT	LBS/M	TEMPER
------	-------	------	-------	--------

1. ALL DIMENSIONS IN INCHES  
- TWO PLACE DECIMALS ±0.01  
- THREE PLACE DECIMALS ±0.005  
- ANGLES ±1°  
- ALL DIA. CONCENTRIC WITHIN 0.005 T.I.R.

FINISH	MATERIAL
SPEC No.	SPEC No.

2. FEATURES ON THE SAME CENTERLINE MUST BE ALIGNED WITHIN ±0.002

FIRST USED ON	SCALE
	5:2

**Switchcraft®**

E	27141 REDRAWN	5-7-13	TO	TJK
---	---------------	--------	----	-----

DATE DRAWN	BY	CHKD	APVD
16-Apr-13	TO	TO	TJK
		4-16-13	4-16-13

SHEET	OF
-------	----

REV	ECO NUMBER	DATE	BY	APVD
-----	------------	------	----	------

NAME	PART No.	REV
PHONO PLUG ASSEMBLY, RoHS	3507	E

REVISIONS

DO NOT SCALE DRAWING