

THIS DRAWING IS UNPUBLISHED.

RELEASED FOR PUBLICATION

© COPYRIGHT BY TYCO ELECTRONICS CORPORATION. ALL RIGHTS RESERVED.

LOC AG

DIST 53

REVISIONS

P	LTR	DESCRIPTION	DATE	DWN	APVD
	B	REV PER ECO-09-026264	09MAR2010	HMR	DB



MATERIAL: EYELET-COPPER PER ASTM B 152  
SPRING-BERYLLIUM COPPER  
PER ASTM B 194



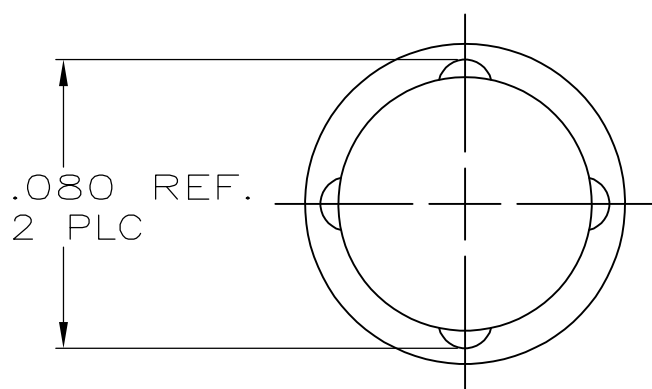
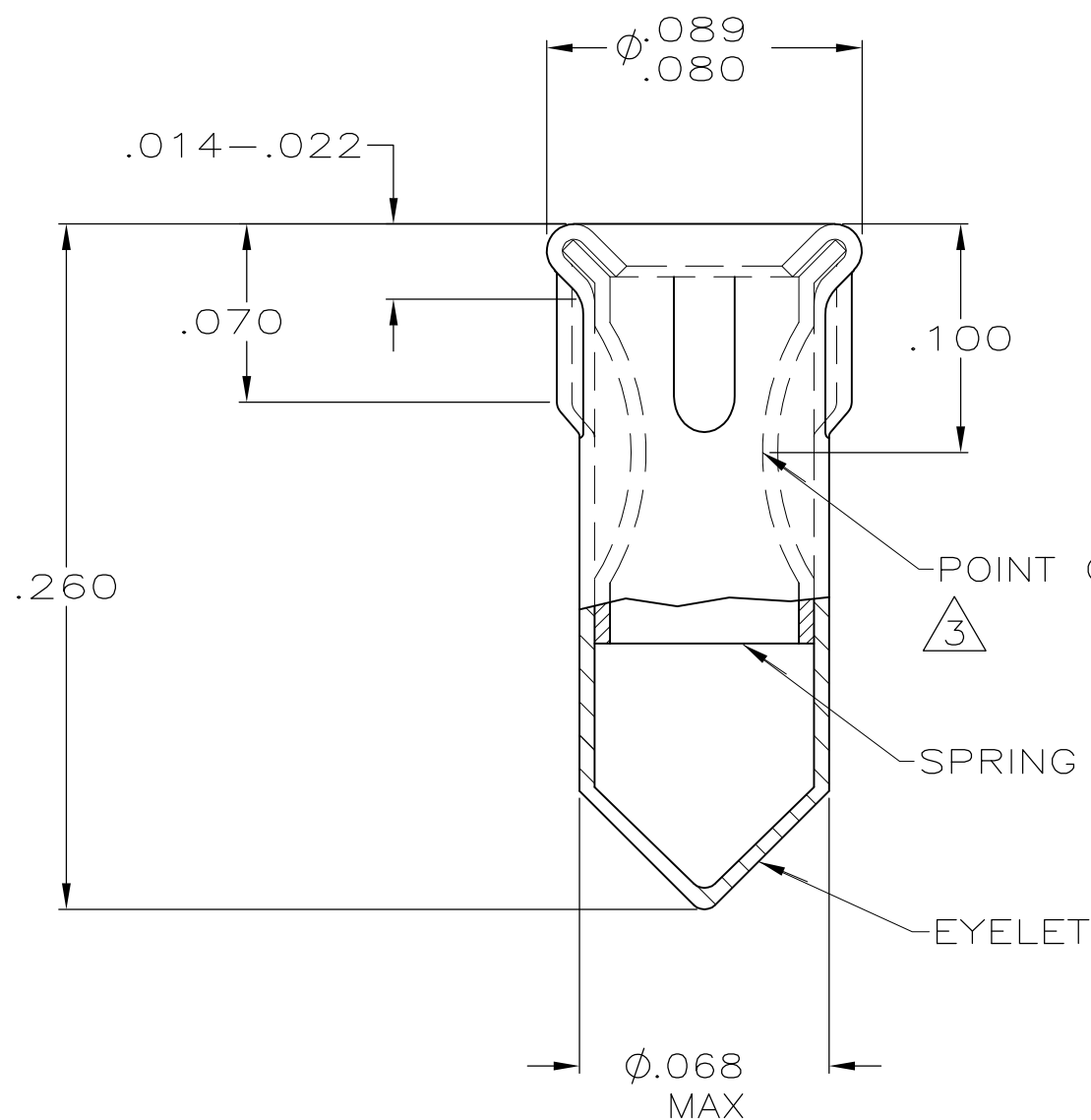
TIN PLATE PER ASTM B 545 .000100  
MIN THICK.



NICKEL UNDERPLATE ALL OVER, MATING SURFACE PLATED  
TO MEET PERFORMANCE REQUIREMENTS OF TYCO PRODUCT  
SPECIFICATION 108-14008.

4.

RECOMMENDED HOLE SIZE FOR MACHINE  
INSERTION .069-.075.



DIA	LENGTH	SPRING	EYELET	PART NUMBER
.037-.041	.100-.210			5645500-2
				5645500-1

THIS DRAWING IS A CONTROLLED DOCUMENT.		DWN G. ATTADIA - 20APR2005 DOCK5	Tyco Electronics Corporation Harrisburg, PA 17105-3608	
DIMENSIONS: INCHES		CHK J. HAVENER 20APR2005	NAME	
TOLERANCES UNLESS OTHERWISE SPECIFIED:		APVD J. HAVENER 20APR2005	PRODUCT SPEC	
0 PLC ± -		APPLICATION SPEC		
1 PLC ± -		SIZE CAGE CODE DRAWING NO RESTRICTED TO		
2 PLC ± -		A3 00779 C-5645500		
3 PLC ± .010		SCALE NTS SHEET 1 OF 1 REV B		
4 PLC ± -				
ANGLES ± -				
MATERIAL		FINISH SEE TABLE		
CUSTOMER DRAWING				