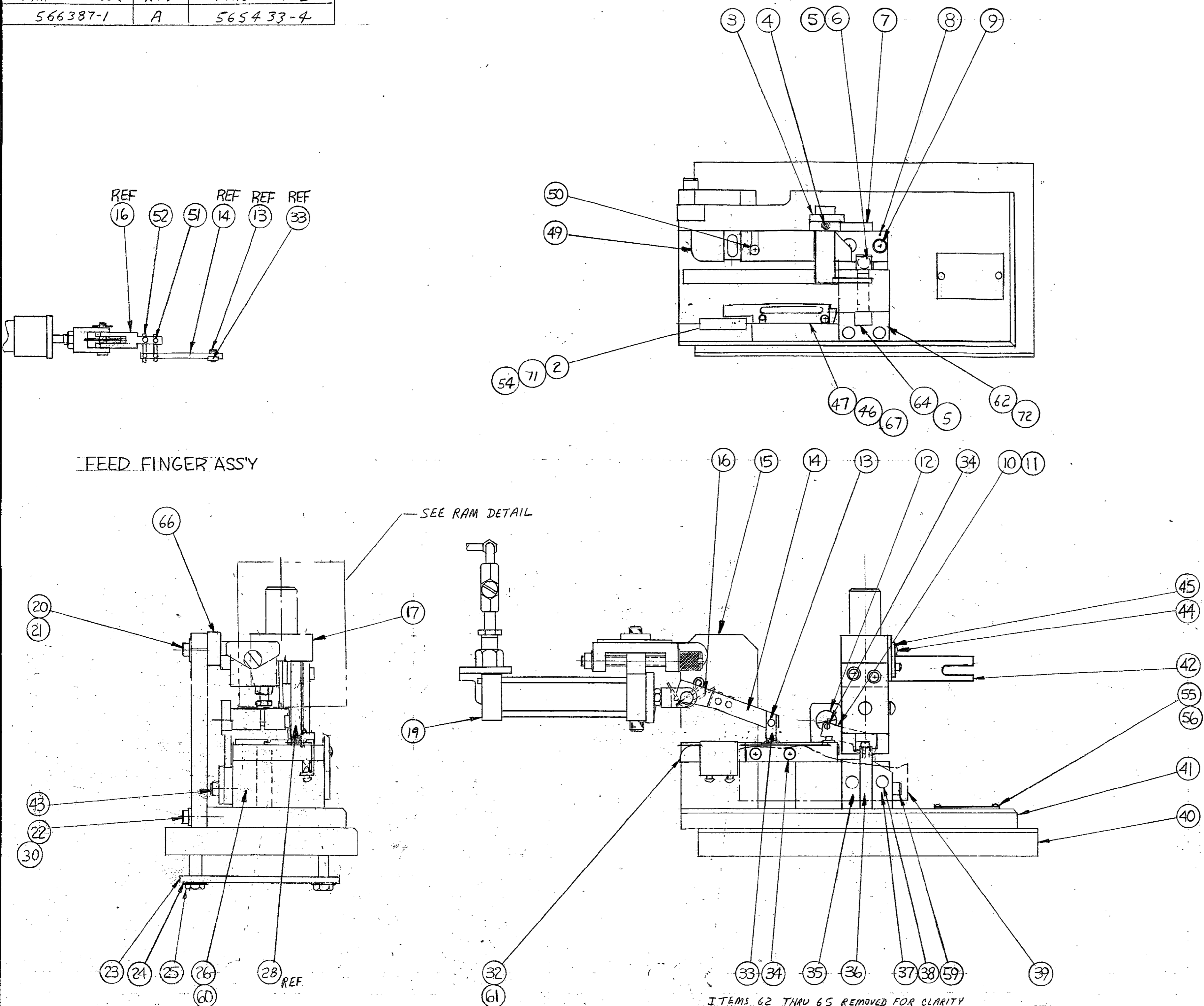
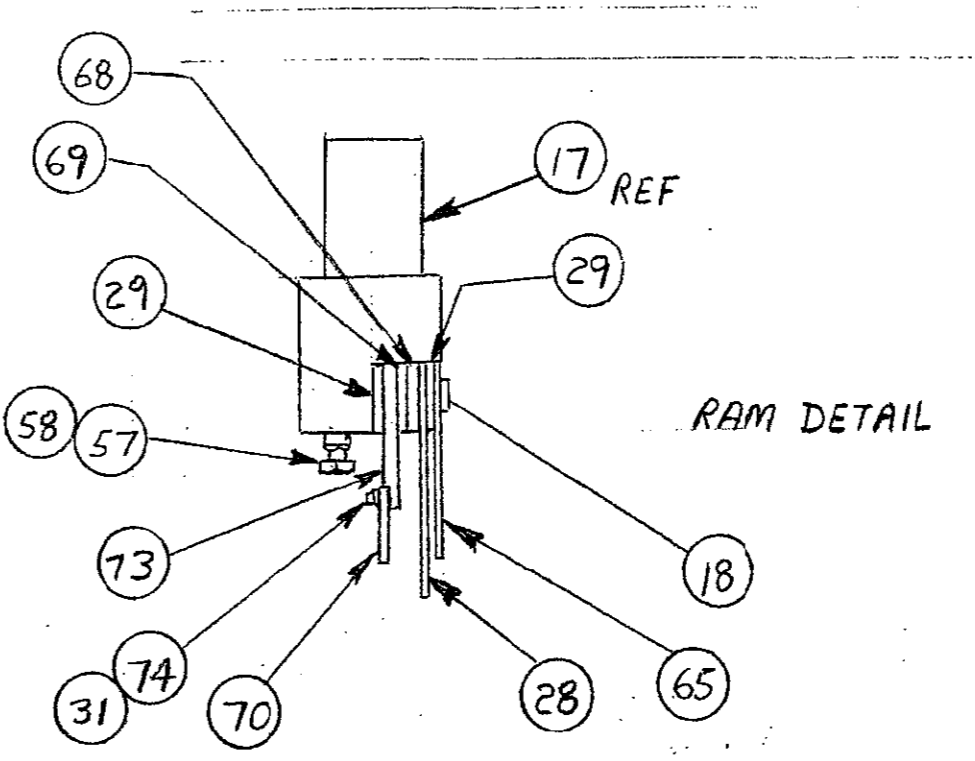


PART NUMBER	REV	FIRST USED
566387-1	A	565433-4

USED ON



1 MOUNT REEL SUPPORT AND STOCK GUIDE TO LEFT HAND SIDE OF BENCHMASTER PRESS.



- KEY:
- RECOMMENDED SPARE PARTS.
 - ▲ LUBRICATE DAILY USING NO 20 MACHINE OIL.
 - GREASE LIGHTLY.

QTY	DESCRIPTION	ITEM NO
1	B 1-679651-7 GUIDE, FRONT STRIP	47
2	A 1-21000-6 SCR, SHC (4-40 x .62)	46
1	A 372251 PLATE, RETAINER	45
2	A 2-21002-7 SCR, BHC, 10-32 x .50 LG	44
2	A 3-21000-7 SCR, SHC, 10-32 x .75 LG	43
1	B 454566-1 ARM, OPERATING	42
1	D 818821-2 PLATE, BASE	41
1	C 454347-1 PLATE, BOLSTER	40
1	D 1338197-1 GUARD	39
2	A 4-21000-0 SCR, SHC, 10-32 x 1.25 LG	38
1	A 818827-1 HOLDER, AUX ANVIL	37
1	D 1338166-1 ANVIL, SPECIAL	36
1	A 818826-1 HOLDER, ANVIL	35
3	A 2-21002-7 SCR, BUT HD MACH, 10-32 x .50	34
1	A 811645-6 TIP, FEED FINGER	33
1	A2 1338185-1 PLATE, STRIP GUIDE	32
2	A 21024-4 WASHER, LOCK #8	31
2	A 21899-3 WASHER, FLAT 1/4	30
2	D 370692 SPACER, CRIMP	29
1	C 453930-5 CRIMPER, WIRE .300	28
1	A 370703 SPACER, TOOL	27
1	B 692793-2 BLOCK, BASE	26
4	A 3-21015-4 SCR, HEX HD, 3/8-16 x 1.75 LG	25
2	A 21024-8 WASHER, LOCK, .38 I.D	24
2	A 694788-1 WASHER, PLATE	23
2	A 21001-4 SCR, SHC, 1/4-20 x .75	22
1	A 21899-5 WASHER, FLAT, 38 I.D	21
1	A 3-21001-7 SCR, SHC, 3/8-16 x 1.50	20
1	D 1-690021-2 AIR FEED ASS'Y	19
2	A 1-21001-0 SCR, SHC, 1/4-20 x 2.00	18
1	C 454355-4 HOLDER, TOOL	17
1	A 810131 ARM, FEED FINGER	16
1	C 471799-1 BRACKET, FEED MTG	15
1	B 811644-1 FINGER, FEED	14
1	A 2-21000-5 SCR, SHC, 8-32 x .25 LG	13
1	A 388271-3 MOUNT, STRIPPER	12
1	A 386368 BUSHING	11
1	A 818828-1 STRIPPER	10
2	A 3-21000-5 SCR, SHC, 10-32 x .50 LG	9
1	B 819298-1 PLATE, REAR SHEAR	8
1	A 387715-3 BRACKET, WIRE STOP	7
1	B 818823-1 SHEAR, FLOATING	6
2	A 387083 SPRING, COMP 38 DIA	5
1	A 5-21006-1 SCR, SOC SET, 10-32 x .31 LG	4
1	A 389078 SPACER, BRACKET	3
1	B 240792-5 DRAG, STOCK	2
1	A 3-21006-1 SCR, SOC SET, 6-32 x .38 LG	1

QTY	DESCRIPTION	ITEM NO
2	A 2-21000-8 SCR, SHC 8-32 x .62	74
1	A3 1338288-1 SPACER, TERM HOLD DOWN	73
2	A 3-21000-9 SCR, SHC (10-32 x 1.00)	72
2	A 3-21002-0 SCR, BHC (10-32 x .88)	71
1	463460-3 HOLD DOWN	70
1	D 374109 SPACER	69
1	D 370296 SPACER	68
2	A 21024-2 WASHER, LOCK #4	67
1	A 452064-1 SPACER, FEED SWIVEL	66
1	A 467494-1 SHEAR DEPRESSOR	65
1	A 469004-1 SHEAR, FLOATING	64
1	A 811239-1 SHEAR PLATE	63
1	A3 1338167-1 HOLDER, SHEAR	62
2	A 21001-3 SCR, SHC, 1/4-20 x .62	61
2	A 21001-6 SCR, SHC, 1/4-20 x 1.00	60
2	A 3-21000-3 SCR, SHC, 8-32 x 1.50	59
1	A 21020-7 NUT, HEX JAM 1/4-28	58
1	A 21909-9 DEPRESSOR, SHEAR	57
2	A 21017-6 SCREW, DRIVE	56
1	A 461264-1 PLATE, IDENTIFICATION	55
2	A 1-22284-0 SPRING, STOCK DRAG	54
		53
2	A 1-21030-9 PIN ϕ .188 x 2.00	52
4	A 3-21006-9 SCR, SOC SET, 8-32 x .19 LG	51
2	A 2-21000-6 SCR, SHC, 8-32 x .38	50
1	A3 1338289-1 GUIDE, REAR STRIP	49

ITEMS 62 THRU 65 REMOVED FOR CLARITY

CRIMPING DATA				APPLICATOR WILL APPLY			
CRIMP HEIGHT	WIRE SIZE	WIRE RANGE					1217185
.174 ± .002 [4.42 ± 0.5]	(2) 8's	# 8					
		INSUL RANGE					
CRIMP	SIZE	TYPE	CRIMP	SIZE	TYPE	FEED	
WIRE	.300	F	INSUL	-	-	.920	
	[.762]						
PRESS REF	565433-4		APPL INST	A1			
REMARKS							

REMARKS:	NO	REV
APPL USED ON MACHINE PART NO	MACH SERIAL NO	DISTRIBUTION
CUSTOMER NAME	APPL SERIAL NO	ORIGINAL
ADDRESS	PURCHASE ORDER	CUSTOMER COPY
CITY	ENG APP	FIELD ENG COPY

QTY REQD PER ASSY	PARTS LIST	
DIMENSIONS IN INCHES, TOLERANCES UNLESS OTHERWISE SPECIFIED:	MATERIAL	HEAT TREAT
2 PL DEC ±		
3 PL DEC ±		
4 PL DEC ±		
ANGLES ±		
SURF TEXTURE:	FINISH	
REMOVE BURRS, BREAK SHARP EDGES .015R MAX	NAME SIDE FEED STANDARD APPLICATOR, 5 TON BENCH MASTER	
SCALE N.T.S.	DWG NO 566387	SHEET REV A
	CUSTOMER AND ASSEMBLY DRAWING	

THIS DRAWING IS A CONTROLLED DOCUMENT

RELEASED FOR INSULATION 29 AUG 1999 BY AMP INCORPORATED. ALL RIGHTS RESERVED. © COPYRIGHT 1989

LOC 4
DIST 4