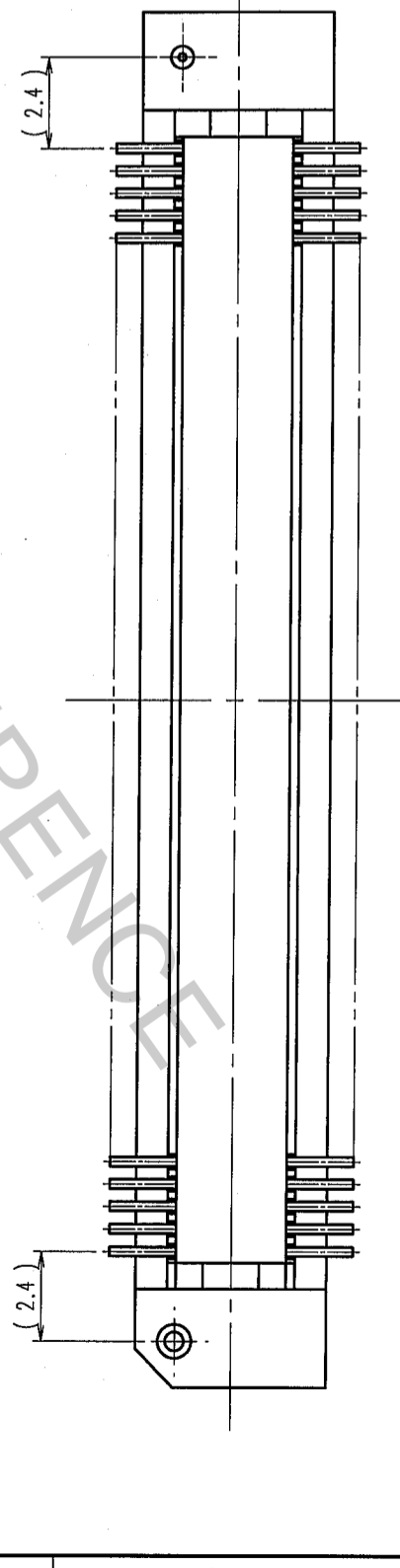
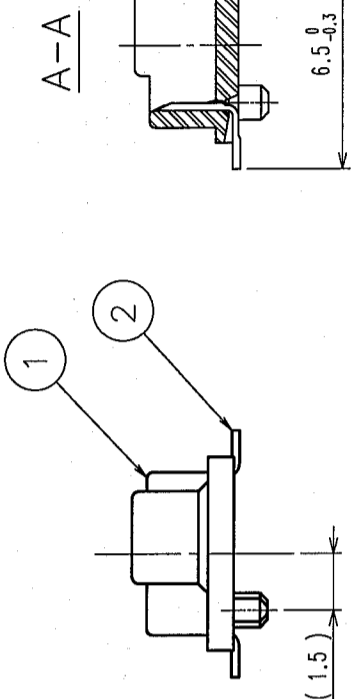
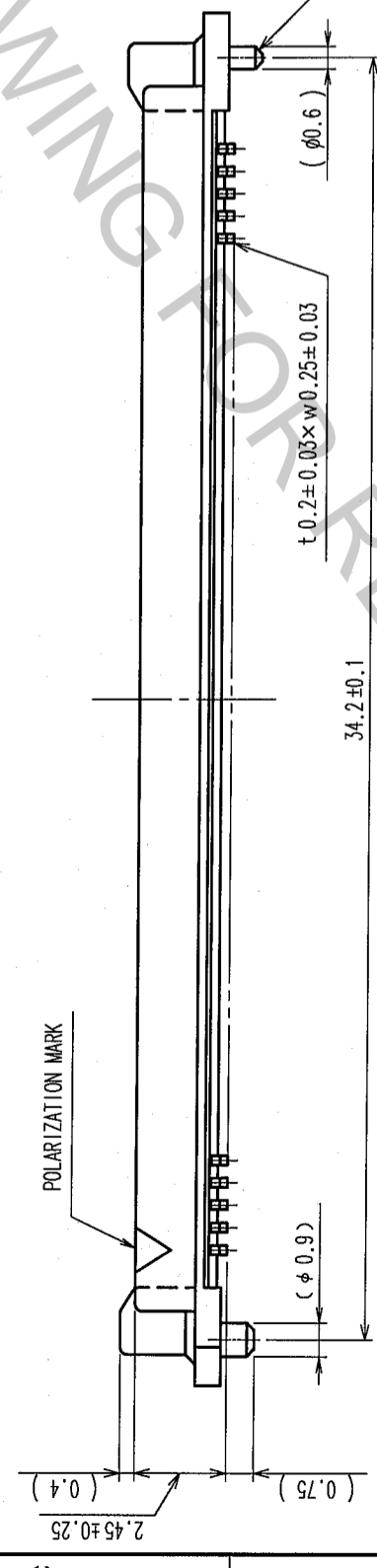
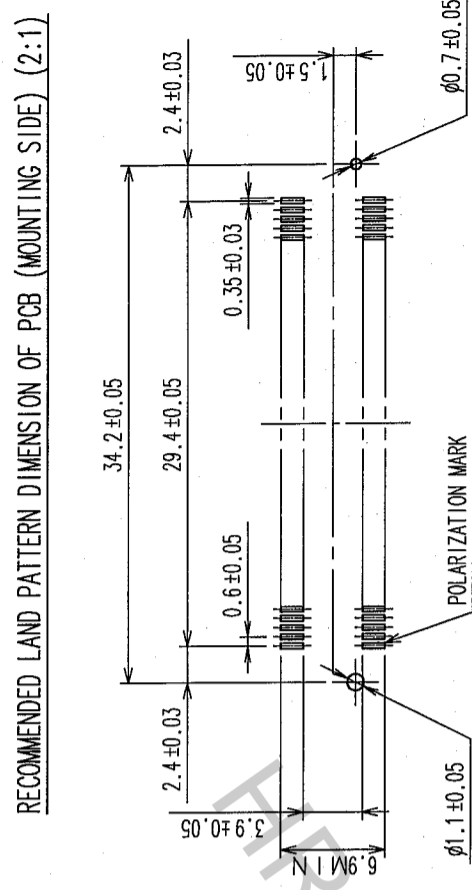
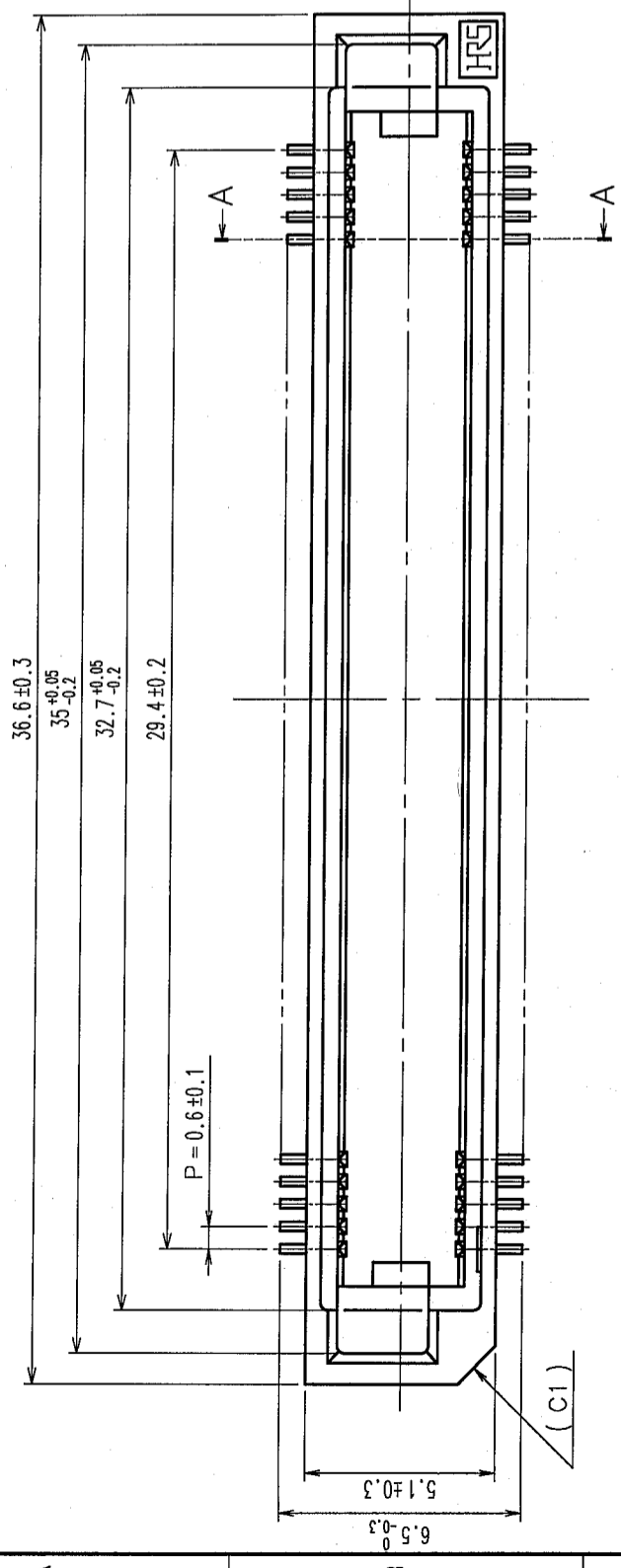


COUNT	DESCRIPTION OF REVISIONS	BY	CHKD	DATE	COUNT	DESCRIPTION OF REVISIONS	BY	CHKD	DATE
△					△				
△					△				
△					△				

RECOMMENDED LAND PATTERN DIMENSION OF PCB (MOUNTING SIDE) (2:1)



- NOTE 1. LEAD CO-PLANARITY SHALL BE 0.1mm MAX.
 2. FOR MODIFICATION, ETC., PREVENTIVE HOLE FOR SINK MARK MAY BE ADDED ACCORDING TO CIRCUMSTANCES.
 3. THE DIMENSIONS IN PARENTHESES ARE FOR REFERENCE.

1	POLYPHENYLENE SULFIDE	LIGHT BROWN (UL94V-0)	2	PHOSPHOR BRONZE	CONTACT AREA: GOLD 0.1μm min. LEAD AREA: GOLD FLASH UNDER PLATING: NICKEL 0.5μm min.
NO.	MATERIAL	FINISH, REMARKS	NO.	MATERIAL	FINISH, REMARKS
CODE NO. (OLD) CL			DESIGNED A. Doi	CHECKED K. Ogawa	APPROVED H. Okawa
			DRAWN A. Doi	DESIGNED K. Ogawa	APPROVED H. Okawa
			'05.09.02	'05.09.02	'05.09.02
DRAWING NO. EDC3-150566-25		PART NO. FX8-100P-SV(71)			
SCALE 5:1					
UNITS mm					
HIROSE ELECTRIC CO., LTD		CODE NO. CL578-0005-7-71		1/1	

TO	
PCK	