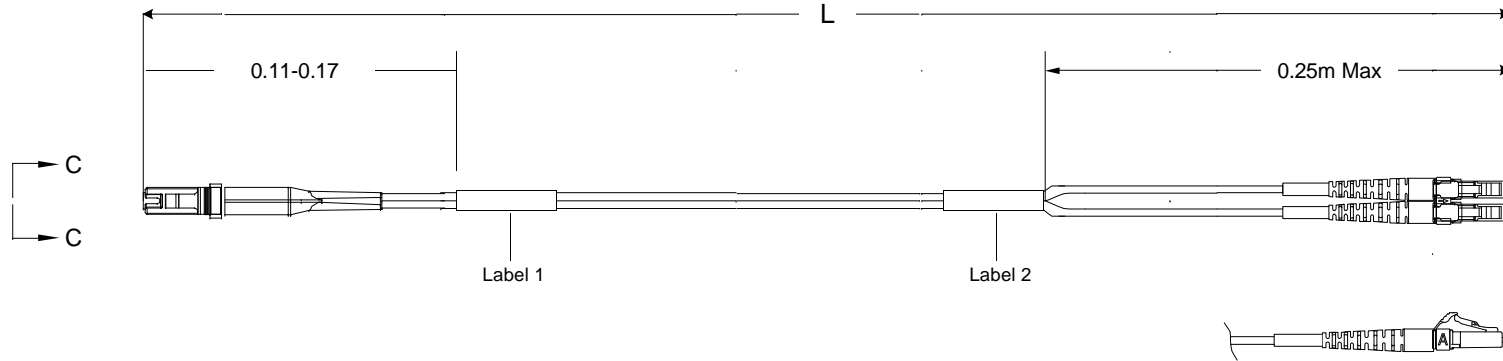
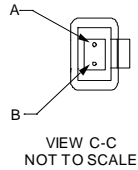


THIS DRAWING IS A CONTROLLED DOCUMENT. DWG NO



Left Side

Connector(s): MT-RJ SECURE (No Pins)
 Mode: MM
 Housing Color: Aqua
 Geom. Spec: 115-1215



Fiber Path

Fiber A - - B
 Fiber B - - A

- Notes:
- 1 IL tested at 1300nm.
 - 2 Product and Processing must meet requirements of Tyco Electronics Standard 230-702
 - 3 Label 2 will not be present on any cable assembly less than 5 meters long.
 - 4 Includes dust caps (not shown on print).

Right Side

Connector(s): LC-Duplex
 Mode: MM
 Housing Color: Beige
 Geom. Spec: N/A

THIS INFORMATION IS CONFIDENTIAL AND PROPRIETARY TO TYCO ELECTRONICS CORPORATION. IT IS NOT TO BE DISCLOSED TO ANY OTHER PERSON OR ENTITY WITHOUT THE WRITTEN AUTHORIZATION OF TYCO ELECTRONICS CORPORATION, HARRISBURG, PENNSYLVANIA

LOC
 CE
 DIST
 16

P	LTR	REV PER	EC#	RELEASE	DATE	DW	APVD
	A	Rev Per	EC#	RELEASE	3/31/2008	-	JD
				REVISION RECORD			

DIMENSIONS:	TOLERANCES UNLESS OTHERWISE SPECIFIED:
meters	
	0 PLC ± .
	1 PLC ± .
	2 PLC ± .
	3 PLC ± .
	4 PLC ± .

Restricted To:

DWG	Cable Assy Configurator	MATERIAL	HEAT TREAT
CHK	Joe Davis		
APVD	Joe Davis	AMP Tyco Electronics, Inc. Harrisburg, PA 17105-3608	
NAME	FO C/A - 2 fiber, 62.5/125, OFNR (Riser) jacket, MT-RJ SECURE (No Pins) to LC-Duplex		
SCALE	SIZE	DRAWING NO	SHEET
NTS	A2	C- 1918699	1 of 3
			REV
			A

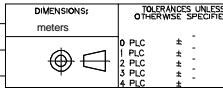
Part #	L (meters)	L (feet)	MT-RJ SECURE (No Pins), Aqua		LC-Duplex, Beige	
			IL (dB)	RL (dB)	IL (dB)	RL (dB)
0-1918699-1	0.950 - 1.050	3.11 - 3.44	0.5	20	0.5	-
0-1918699-2	1.950 - 2.050	6.39 - 6.72	0.5	20	0.5	-
0-1918699-3	2.950 - 3.050	9.67 - 10.00	0.5	20	0.5	-
0-1918699-4	3.920 - 4.080	12.86 - 13.38	0.51	20	0.51	-
0-1918699-5	4.920 - 5.080	16.14 - 16.66	0.51	20	0.51	-
0-1918699-6	5.920 - 6.080	19.42 - 19.94	0.51	20	0.51	-
0-1918699-7	6.920 - 7.080	22.70 - 23.22	0.51	20	0.51	-
0-1918699-8	7.920 - 8.080	25.98 - 26.50	0.51	20	0.51	-
0-1918699-9	8.850 - 9.150	29.03 - 30.01	0.51	20	0.51	-
1-1918699-0	9.850 - 10.150	32.31 - 33.30	0.52	20	0.52	-
1-1918699-1	10.850 - 11.150	35.59 - 36.58	0.52	20	0.52	-
1-1918699-2	11.850 - 12.150	38.87 - 39.86	0.52	20	0.52	-
1-1918699-3	12.850 - 13.150	42.15 - 43.14	0.52	20	0.52	-
1-1918699-4	13.850 - 14.150	45.43 - 46.42	0.52	20	0.52	-
1-1918699-5	14.850 - 15.150	48.72 - 49.70	0.52	20	0.52	-
1-1918699-6	15.840 - 16.160	51.96 - 53.01	0.52	20	0.52	-
1-1918699-7	16.830 - 17.170	55.21 - 56.33	0.53	20	0.53	-
1-1918699-8	17.820 - 18.180	58.46 - 59.64	0.53	20	0.53	-
1-1918699-9	18.810 - 19.190	61.71 - 62.95	0.53	20	0.53	-
2-1918699-0	19.800 - 20.200	64.96 - 66.27	0.53	20	0.53	-
2-1918699-1	20.790 - 21.210	68.20 - 69.58	0.53	20	0.53	-
2-1918699-2	21.780 - 22.220	71.45 - 72.90	0.53	20	0.53	-
2-1918699-3	22.770 - 23.230	74.70 - 76.21	0.53	20	0.53	-
2-1918699-4	23.760 - 24.240	77.95 - 79.52	0.54	20	0.54	-
2-1918699-5	24.750 - 25.250	81.20 - 82.84	0.54	20	0.54	-
2-1918699-6	25.740 - 26.260	84.44 - 86.15	0.54	20	0.54	-
2-1918699-7	26.730 - 27.270	87.69 - 89.46	0.54	20	0.54	-
2-1918699-8	27.720 - 28.280	90.94 - 92.78	0.54	20	0.54	-
2-1918699-9	28.710 - 29.290	94.19 - 96.09	0.54	20	0.54	-
3-1918699-0	29.700 - 30.300	97.44 - 99.40	0.55	20	0.55	-
3-1918699-1	30.690 - 31.310	100.68 - 102.72	0.55	20	0.55	-
3-1918699-2	31.680 - 32.320	103.93 - 106.03	0.55	20	0.55	-
3-1918699-3	32.670 - 33.330	107.18 - 109.35	0.55	20	0.55	-
3-1918699-4	33.660 - 34.340	110.43 - 112.66	0.55	20	0.55	-
3-1918699-5	34.650 - 35.350	113.68 - 115.97	0.55	20	0.55	-
3-1918699-6	35.640 - 36.360	116.92 - 119.29	0.55	20	0.55	-
3-1918699-7	36.630 - 37.370	120.17 - 122.60	0.56	20	0.56	-
3-1918699-8	37.620 - 38.380	123.42 - 125.91	0.56	20	0.56	-
3-1918699-9	38.610 - 39.390	126.67 - 129.23	0.56	20	0.56	-
4-1918699-0	39.600 - 40.400	129.92 - 132.54	0.56	20	0.56	-
5-1918699-0	49.500 - 50.500	162.40 - 165.68	0.58	20	0.58	-

Qty	U of M	Description	Item No.
2	piece	Trace Label	14
2	piece	Eyelet/Shrink tube assembly - White	13
1	piece	MT-RJ TwinZip Bend Limiting Boot, Beige	12
AR	meter	2 fiber, 62.5/125, 1.8 mm, Twinzip, Orange, OFNR (Riser)	11
1	piece	MT-RJ FERRULE, THERMOPLAST,MM	10
2	piece	LC Connector Assy, MM	9
1	piece	LC Duplex clip, black	8
2	piece	LC, SC, FC Straight Boot, Beige	7
1	piece	MT-RJ Keyed Connector Housing - Aqua	6
1	piece	CRIMP EYELET, MT-RJ	5
1	piece	MT-RJ, SPRING PUSH, UNIVERSAL	4
1	piece	PIN KEEPER, 3.8MM	3
1	piece	SPRING, MT-RJ, 3.8 DESIGN	2
1	piece	DUST COVER, MT-RJ	1

THIS INFORMATION IS CONFIDENTIAL AND PROPRIETARY TO TYCO ELECTRONICS CORPORATION. IT IS THE PROPERTY OF TYCO ELECTRONICS CORPORATION AND IS NOT TO BE DISCLOSED TO ANYONE OTHER THAN AUTHORIZED PERSONNEL WITHOUT WRITTEN AUTHORIZATION FROM TYCO ELECTRONICS CORPORATION, HARRISBURG, PENNSYLVANIA.

LOC
 CE
 DIST
 16

P	LTR	Rev	Per	EC#	RELEASE	3/31/2008	DATE	DIN	APVD
		A							JD



Restricted To:

DIN Cable Assy Configurator		MATERIAL -		HEAT TREAT -	
OK Joe Davis					
APVD Joe Davis		AMP Tyco Electronics, Inc. Harrisburg, PA 17105-3608			
NAME FO C/A - 2 fiber, 62.5/125, OFNR (Riser) jacket, MT-RJ SECURE (No Pins) to LC-Duplex					
SCALE NTS	SIZE A2	DRAWING NO C- 1918699	SHEET 2 of 3	REV A	

THIS DRAWING IS A CONTROLLED DOCUMENT. BFC#D

Label 1 Per specification 107-1645-1

Trace # - Bar Code
 Trace # - Human Readable
 Part Number
 Country of Origin

This label is used on all lengths on this drawing.

Label 2 Per specification 107-1645-1

Trace # - Bar Code
 Trace # - Human Readable
 Part Number
 Country of Origin

This label is used on all lengths on this drawing.

THIS INFORMATION IS CONFIDENTIAL AND PROPRIETARY TO TYCO ELECTRONICS CORPORATION. IT IS THE PROPERTY OF TYCO ELECTRONICS CORPORATION AND IS NOT TO BE DISCLOSED TO ANY OTHER PERSONS WITHOUT THE WRITTEN AUTHORIZATION OF TYCO ELECTRONICS CORPORATION, HARRISBURG, PENNSYLVANIA

LOC
CE
DIST
16

A	Rev Per EC#	RELEASE	3/31/2008	-	JD		
P	LTR	REVISION RECORD	DATE	DIN	APVD		

DIMENSIONS: meters	TOLERANCES UNLESS OTHERWISE SPECIFIED:
	0 PLC ± .
	1 PLC ± .
	2 PLC ± .
	3 PLC ± .
	4 PLC ± .

Restricted To:

DIN	Cable Assy Configurator	MATERIAL	HEAT TREAT
OK	Joe Davis		
APVD	Joe Davis	AMP Tyco Electronics, Inc. Harrisburg, PA 17105-3608	
NAME	FO C/A - 2 fiber, 62.5/125, OFNR (Riser) jacket, MT-RJ SECURE (No Pins) to LC-Duplex		
SCALE	SIZE	DRAWING NO	SHEET
NTS	A2	C- 1918699	3 of 3
			REV
			A