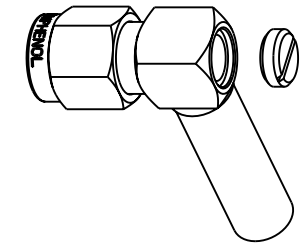
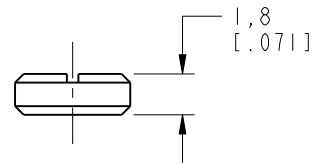


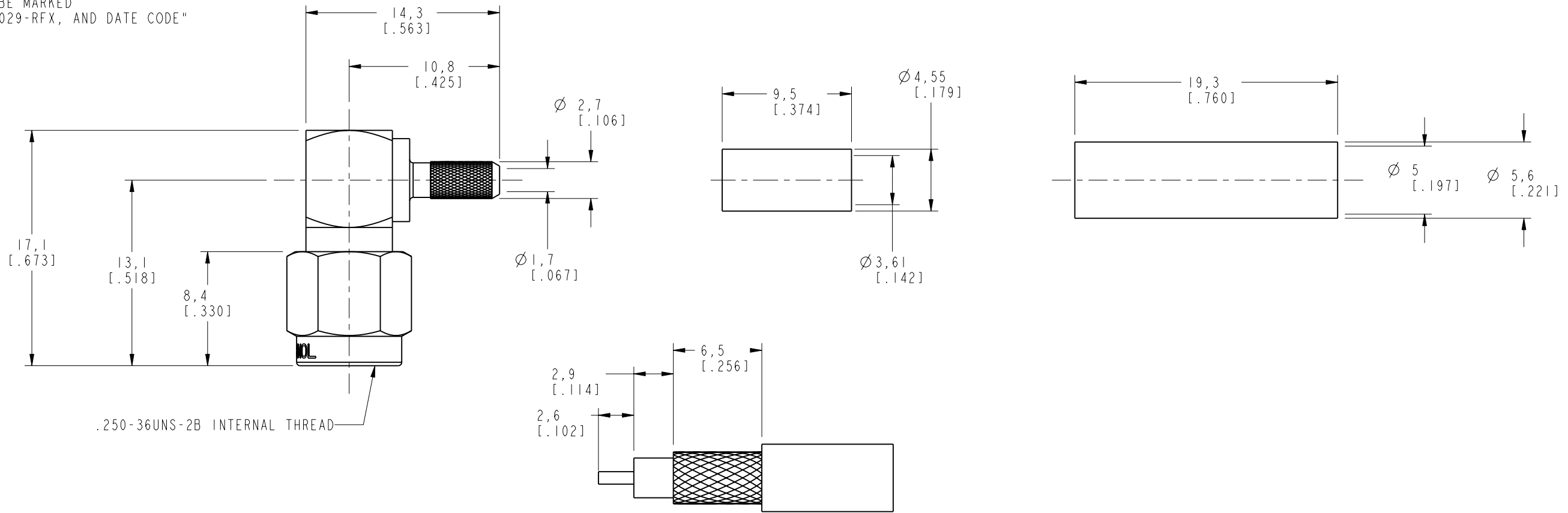
NOTES:

1. MATERIALS OF CONSTRUCTION:
 SHELL, HOUSING & COVER = BRASS, NICKEL PLATED (.000100 MIN THICK)
 CONTACT PIN = BRASS, GOLD PLATED (.000050 MIN THICK)
 RETAINER RING = BeCu, NATURAL
 FERRULE = COPPER, NICKEL PLATED (.000052 MIN THICK)
 INSULATOR = TEFLON, MIL-P-19468
 GASKET = SILICONE RUBBER, COLOR RED
 HEAT SHRINK TUBING = COLOR BLACK
2. CRIMPED FERRULE = HEX CRIMP SIZE .151
 CONTACT PIN TO SOLDER.
3. ELECTRICAL:
 A. IMPEDANCE: 50 OHM
 B. FREQUENCY RANGE: DC - 12.4 GHz
 C. VSWR(RETURN LOSS): XXXX (XXXX dB), MAX.
 D. DIELECTRIC WITHSTANDING VOLTAGE: 750 VRMS, MIN.
4. MECHANICAL:
 A. DURABILITY: 500 CYCLES MIN.
 B. TEMPERATURE RANGE: -65° C TO +165° C
5. PACKAGING:
 A. QUANTITY: SINGLE PACK
 B. MARKING: BAG TO BE MARKED
 "AMPHENOL, 901-10029-RFX, AND DATE CODE"

901-10029-RFX		REVISIONS			
DRAWING NO.	REV	DESCRIPTION	DATE	ECO	APPR
THIRD ANGLE PROJ.	B	RELEASE TO MFG.	9/14/01	43834	CPM
	C	SEE SHEET 1	8/6/04	45101	CPM



SCALE 1.500



RECOMMENDED CABLE
 STRIPPING DIMENSIONS
 SCALE 3.000

CUSTOMER OUTLINE DRAWING
 ALL OTHER SHEETS ARE FOR INTERNAL USE ONLY

UNLESS OTHERWISE SPECIFIED, DIMENSIONS ARE IN MM (INCHES) AND TOLERANCES ARE:
 0.5 - 6mm ±0.2mm 6 - 30mm ±0.4mm 30 - 120mm ±0.6mm

NOTICE - These drawings, specifications, or other data (1) are, and remain the property of Amphenol Corp. (2) must be returned upon request; and (3) are confidential and not to be disclosed to any person other than those to whom they are given by Amphenol Corp. The furnishing of these drawings, specifications, or other data by Amphenol Corp., or to any other person to anyone for any purpose is not to be regarded by implication or otherwise in any manner licensing, granting rights or permitting such holder or any other person to manufacture, use or sell any product, process or design, patented or otherwise, that may in any way be related to or disclosed by said drawings, specifications, or other data.

MATERIAL	DRAWN	DATE	TITLE		Amphenol Amphenol Corporation Communication and Network Products Division Danbury, CT U.S.A. 06810 SCALE: 3.0:1 SHEET 2 OF 2
	C. McGRATH	8/20/01			
REFERENCE	ENGINEER	DATE	SMA R/A CRIMP PLUG (FOR RG-316U/D CABLE)		
	O. BARTHELMS	8/20/01			
	APPROVED	DATE	CODE ID		
	O. BARTHELMS	9/14/01	74868		
	CAD FILE		DWG SIZE	DRAWING NO.	REV
GEN# 901-9881-RFX_ASSY	I:\SMA\901-10029-RFX		B	901-10029-RFX	B