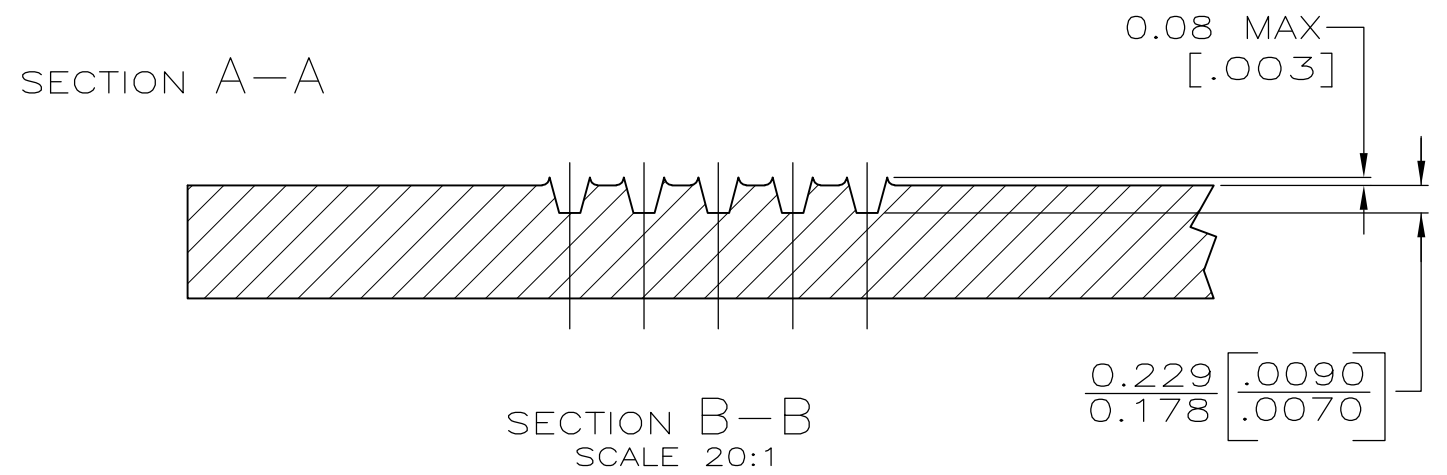
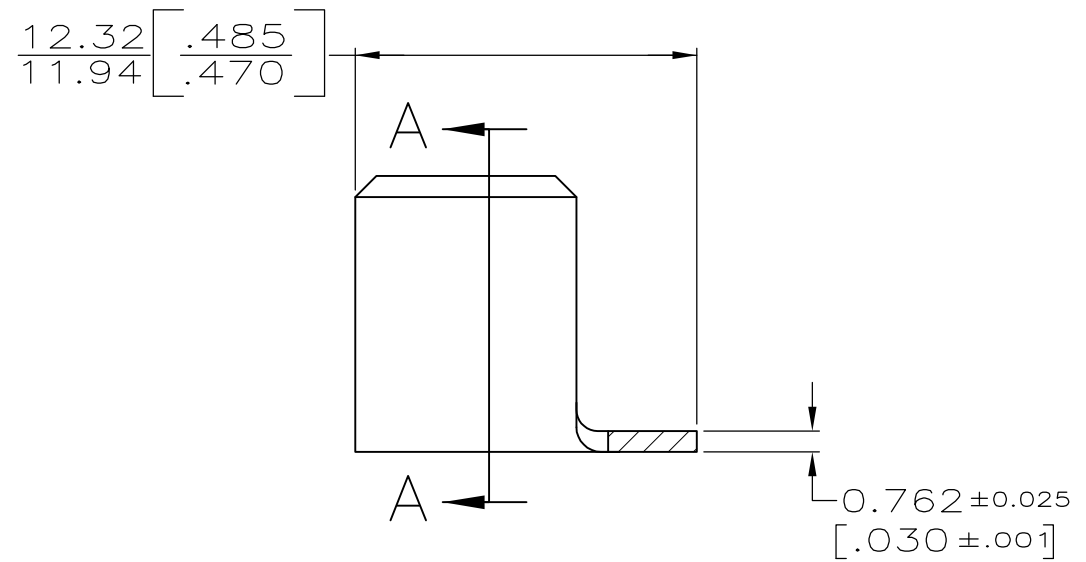
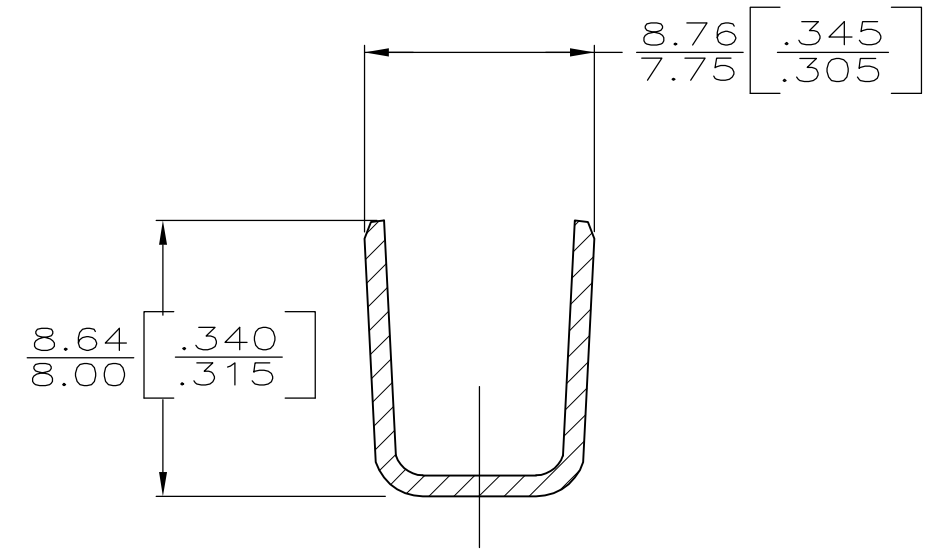
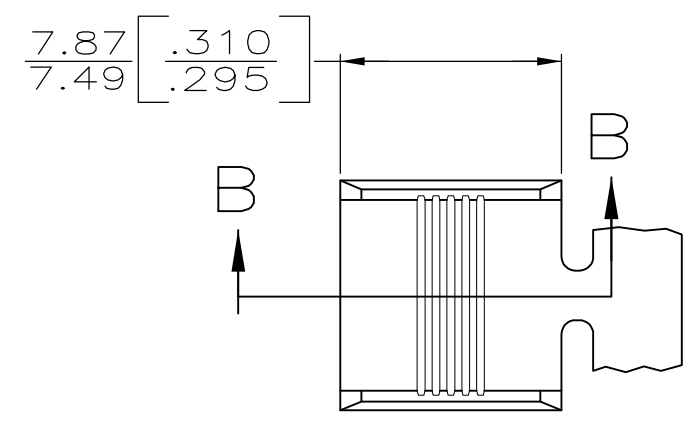


LOC		DIST		REVISIONS					
AF		50		P	LTR	DESCRIPTION	DATE	DWN	APVD
					F1	REVISED PER ECR-07-029650	11DEC07	HMR	GP



1 PRODUCT PROVIDED IN STRIP FORM ON REELS;
 BREAKS MAY BE PRESENT.

2 CRIMP WIDTH: .300, F TYPE (AMPLIVAR THRU)
 CRIMP HEIGHT $\pm 0.002 = (\text{TOTAL CMA} + 44,500) / 510,200$
 GENERAL APPLICATION GUIDELINES MUST BE FOLLOWED
 AS SPECIFIED IN CATALOG #82221
 FOR APPLICATOR INFORMATION CALL: 1-800-722-1111
 FOR PRODUCT INFORMATION CALL: 1-800-522-6752

10,400 TO 22,900 CMA	63562-1
2 WIRE RANGE	PART NO

THIS DRAWING IS A CONTROLLED DOCUMENT.		DWN D.K. SCHRUM 11/30/89	Tyco Electronics Tyco Electronics Corporation Harrisburg, PA 17105-3608	
DIMENSIONS: mm [INCHES]		CHK M.S. FEHER 12/6/89	NAME SPLICE, AMPLIVAR 5 SERRATION	
TOLERANCES UNLESS OTHERWISE SPECIFIED: 0 PLC ± - 1 PLC ± - 2 PLC ± - 3 PLC ± 0.25[.010] 4 PLC ± - ANGLES ± -		APVD D. SCHWENK 12/8/89	DRAWING NO A3 00779 C-63562	
MATERIAL #1 HARD BRASS		FINISH 0.002032[.000080] MIN TIN PL THK	WEIGHT -	RESTRICTED TO -
CUSTOMER DRAWING			SCALE 4:1	SHEET 1 OF 1
			REV F1	