

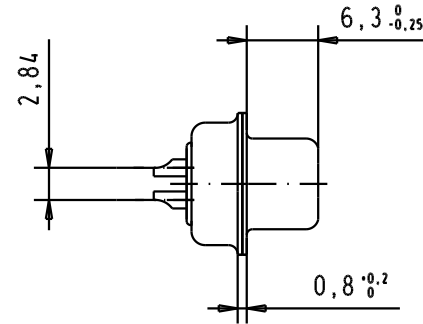
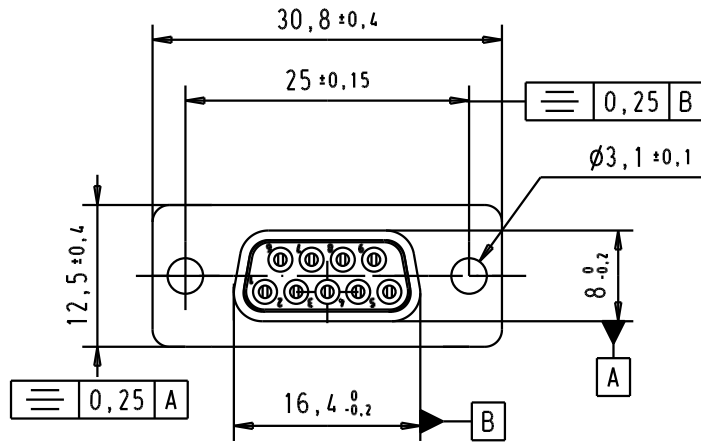
5

4

3

2

1



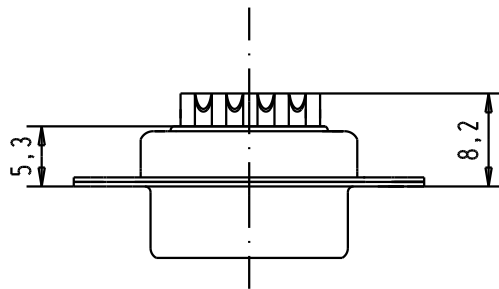
Solder bucket for AWG 20

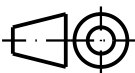

## SPECIFICATION

Mating Cycles	500
Filter type	C
Capacitance	$1000\text{pf} \pm 20\%$
Working Voltage	100V
Current rating	7.5 A
Insulation Resistance	$>1G\Omega$

## Minimum Insertion Loss

FREQUENCY (MHz)	ATTENUATION dB
5	1dB
10	3dB
50	12dB
100	20dB
500	34dB
1000	30dB



Mod.	Dat.	Name	Detail.	Dat.	Name	 All Dim. in mm Orig. Size DIN A 4	D-Sub, female, straight 9 Poles, with turned solder bucket, fixing hole	Me <sup>2</sup> Ms Lab/ Scale 1.5:1
			Insp.					
32802	11/07/05	JMDR	Stand.				TB 09641117230	Blatt/ Page 1 / 1
31894	29/04/04	AF	HARTING EURL F-95972 Paris					
31058	8-JUL-02	CV	Sub.					