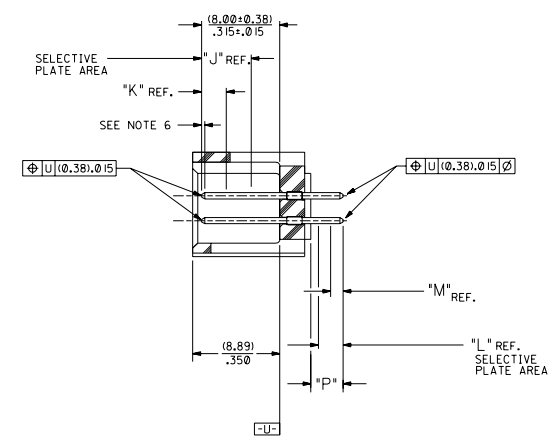
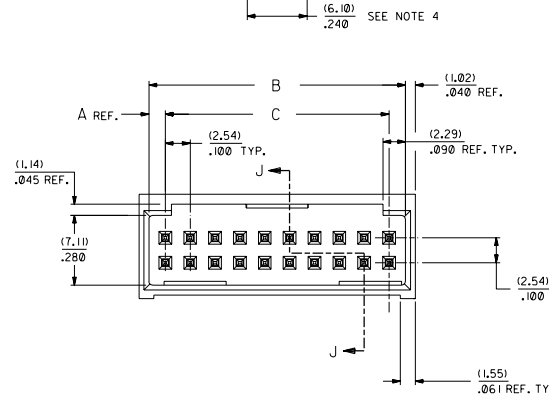


RECOMMENDED P.C. BOARD HOLE LAYOUT



SECTION J-J

NOTES:

- 1- 20 CIRCUIT SIZE SHOWN FOR ILLUSTRATION PURPOSES.
- 2- PIN PUSHOUT FORCE: (17.79 N)/4 LBS.
- 3- PINS MUST MEET SOLDERABILITY SPEC. MIL-STD-202 METHOD 208B.
- 4- WINDOW NOT AVAILABLE ON 6 AND 8 CIRCUIT SIZE.
- 5- FOR CHARTED DIMENSIONS AND ASSEMBLY NO.S NOT SHOWN ON THIS SHEET - SEE SHEET 2.
- 6- ROW TO ROW PIN HEIGHT VARIATION MUST NOT EXCEED (0.13)/.005 IN.
- 7- PRODUCT CONFORMS TO PS-8723.

MATERIAL:

SHROUDED WAFER: GLASS FILLED POLYESTER, 94V-0; COLOR: BLACK.
PINS: PHOSPHOR BRONZE,
SEE SHEET 2 FOR FINISHES.

ASSEMBLY STYLE "A" AND "B"

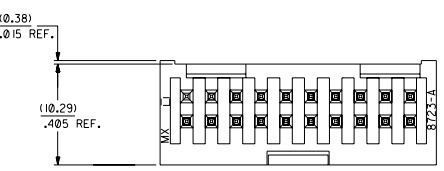
CKT.	8723							
	DIM. "A"	DIM. "B"	DIM. "C"	DIM. "D"	DIM. "E"			
06	(1.68) .066	(8.43) .332	(5.08) .200	(1.68) .066				
08	(1.68) .066	(10.97) .432	(7.62) .300	(1.68) .066				
10	(1.68) .066	(13.51) .532	(10.16) .400	(4.22) .166				
12	(1.68) .066	(16.05) .632	(12.70) .500	(4.22) .166				
14	(1.68) .066	(18.59) .732	(15.24) .600	(6.76) .266				
16	(1.68) .066	(21.13) .832	(17.78) .700	(6.76) .266				
18	(1.68) .066	(23.67) .932	(20.32) .800	(9.30) .366				
20	(1.68) .066	(26.21) 1.032	(22.86) .900	(1.68) .066	(19.46) .766			
22	(1.68) .066	(28.75) 1.132	(25.40) 1.000	(1.68) .066	(22.90) .866			
24	(1.68) .066	(31.29) 1.232	(27.94) 1.100	(1.68) .066	(24.54) .966			
26	(1.68) .066	(33.83) 1.332	(30.48) 1.200	(1.68) .066	(27.08) 1.066			
28	(1.68) .066	(36.37) 1.432	(33.02) 1.300	(1.68) .066	(29.62) 1.166			
30	(1.68) .066	(38.91) 1.532	(35.56) 1.400	(1.68) .066	(32.16) 1.266			
32	(1.68) .066	(41.45) 1.632	(38.10) 1.500	(1.68) .066	(34.70) 1.366			
34	(1.68) .066	(43.99) 1.732	(40.64) 1.600	(1.68) .066	(37.24) 1.466			
36	(1.68) .066	(46.53) 1.832	(43.18) 1.700	(1.68) .066	(39.78) 1.566			
38	(1.68) .066	(49.07) 1.932	(45.72) 1.800	(1.68) .066	(42.32) 1.666			
40	(1.68) .066	(51.61) 2.032	(48.26) 1.900	(1.68) .066	(44.86) 1.766			
42	(1.68) .066	(54.15) 2.132	(50.80) 2.000	(1.68) .066	(47.40) 1.866			
44	(1.68) .066	(56.69) 2.232	(53.34) 2.100	(1.68) .066	(49.94) 1.966			
46	(1.68) .066	(59.23) 2.332	(55.88) 2.200	(1.68) .066	(52.48) 2.066			
48	(1.68) .066	(61.77) 2.432	(58.42) 2.300	(1.68) .066	(55.02) 2.166			
50	(1.68) .066	(64.31) 2.532	(60.96) 2.400	(1.68) .066	(57.56) 2.266			
52	(1.68) .066	(66.85) 2.632	(63.50) 2.500	(1.68) .066	(60.10) 2.366			
54	(1.68) .066	(69.39) 2.732	(66.04) 2.600	(1.68) .066	(62.64) 2.466			
56	(1.68) .066	(71.93) 2.832	(68.58) 2.700	(1.68) .066	(65.18) 2.566			
58	(1.68) .066	(74.47) 2.932	(71.12) 2.800	(1.68) .066	(67.72) 2.666			
60	(1.68) .066	(77.01) 3.032	(73.66) 2.900	(1.68) .066	(70.26) 2.766			
62	(1.68) .066	(79.55) 3.132	(76.20) 3.000	(1.68) .066	(72.80) 2.866			
64	(1.68) .066	(82.09) 3.232	(78.74) 3.100	(1.68) .066	(75.34) 2.966			
66	(1.68) .066	(84.63) 3.332	(81.28) 3.200	(1.68) .066	(77.88) 3.066			
68	(1.68) .066	(87.17) 3.432	(83.82) 3.300	(1.68) .066	(80.42) 3.166			
70	(1.68) .066	(89.71) 3.532	(86.36) 3.400	(1.68) .066	(82.96) 3.266			
72	(1.68) .066	(92.25) 3.632	(88.90) 3.500	(1.68) .066	(85.50) 3.366			

- U ADD -3803 OPT DC#2804-2268 DMORGAN 04/05/20
- T LEAD FREE US#2804-179 RW#WHITE 04/04/26
- S ADD -3802 OPTION ECU# #2804-052 DMORGAN 04/01/2
- R2 TAB DIF DIM 6 CIR ECU# #21099-0145 DMORGAN 56/09/01

- R1 ADD WDG LATCH NOTE ECU# #21099-0399 DMORGAN 56/06/23

- R REMOVE FDP NO.S PER ECR NO US#208 03-23-96
- O REMOVE FDP NO.S PER ECR NO US#205 05-19-94

- P CHGD WINDOW NOTES PER ECR NO US#316 05-04-93
- S R2 O CHANGED MATERIAL PER ECR NO US#146 01-22-93
- R2 3 R2 REVISED & REDRAWN PER ECR NO US#213 05-30-92
- L NTR REVISIONS



DIMENSIONS SHOWN METRIC INCH		REVISIONS	
TITLE SALES ASSEMBLY		REVISE ONLY ON CAD SYSTEM	
PART NO. 8723			
DATE 08/03			
DRAWN BY [signature]			
CHECKED BY [signature]			
APPROVED BY [signature]			
SCALE 4 : 1		SHEET NO. 1 OF 7	
MOLEX INCORPORATED		SDA-8723-*****	

