

10

9

8

7

6

5

4

3

2

1

VIEW ON MATING SIDE



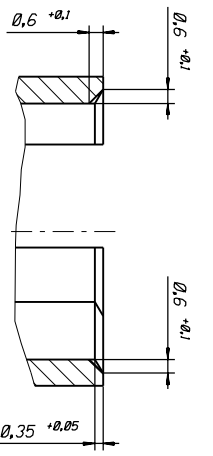
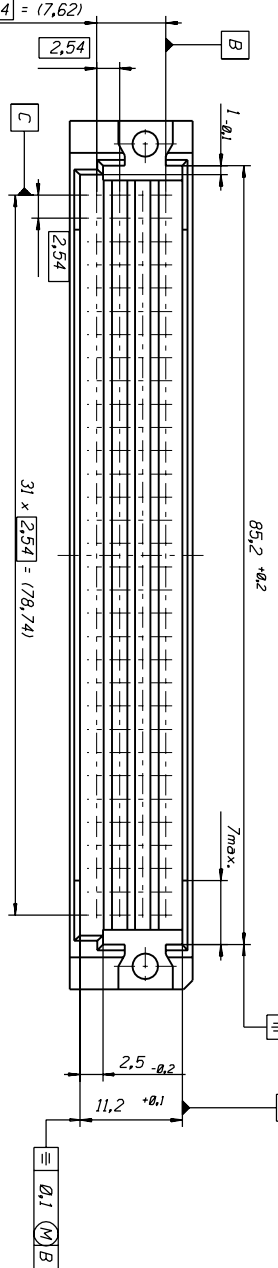
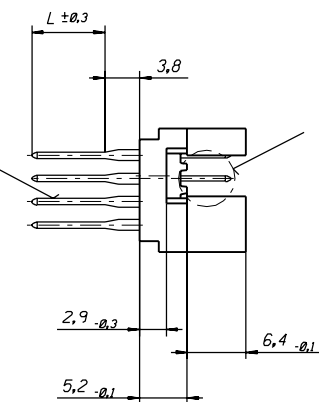
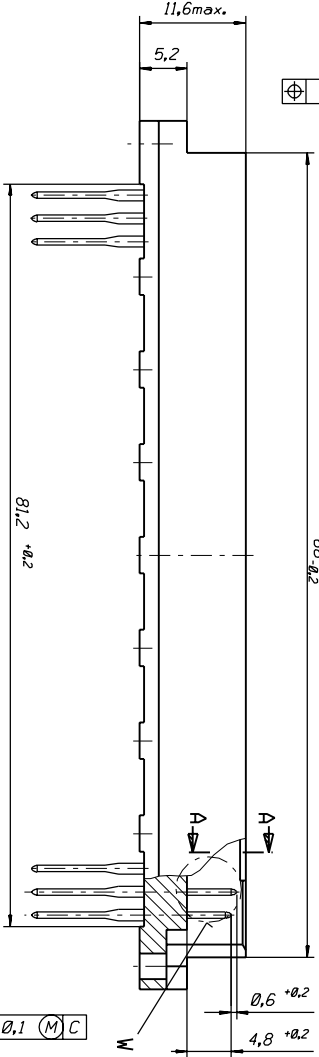
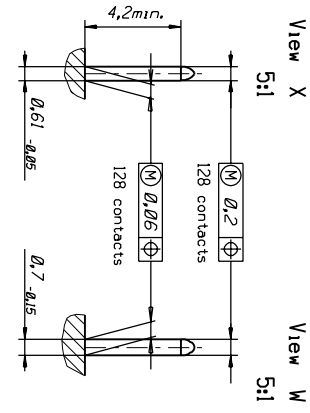
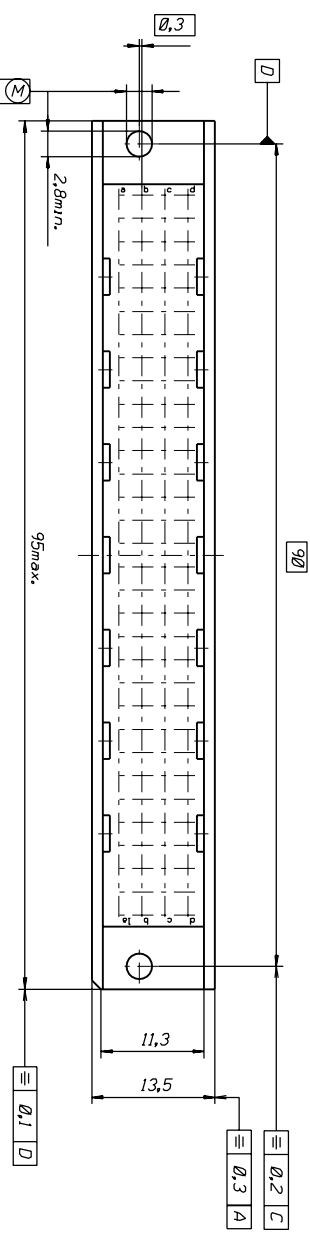
A = 120 STANDARD CONTACTS L=2  
 Z = 8 FMLB CONTACTS + 1.0 L=2  
 S = 128 TOTAL NUMBER OF CONTACTS

MARKING	STANDARD
PERFORMANCE LEVEL	G2/0 = CONTACT AREA PERFORM. LEVEL 2 / TERMINATION TIN
FLUX PROOF	NO
FIXING CLIP	NO
DIMENSIONS	SDA-85015-0001 SHT 3
TECHNICAL DATA	PS-85013-0002

CONTACT SYMBOL	PERFORM. LEVEL	CONTACT POSITION NUMBER
A	G2/0	a3-a32, b3-b32, c3-c32, d3-d32
Z	G2/0	a1-a2, b1-b2, c1-c2, d1-d2

<b>ENTER DESCRIPTION</b> EC NO: I2008-0288 DRWNS:J 2007/11/28 CHKD:KPRASAD 2007/11/28 APPR:KPRASAD 2007/11/28 REV A	<b>QUALITY SYMBOLS</b> ▽=0 ▽=0	<b>GENERAL TOLERANCES (UNLESS SPECIFIED)</b>		<b>DIMENSION STYLE MM ONLY</b>		SCALE 4:1	DESIGN UNITS METRIC	THIRD ANGLE PROJECTION			
				mm	INCH	DRAWN BY SJ	DATE 2007/11/28	TITLE 128 POS MALE CONNECTOR DIN 41612 STYLE R CONTACT ARRANGEMENT			
		4 PLACES ±---		±---	±---	CHECKED BY KPRASAD	DATE 2007/11/28				
		3 PLACES ±---		±---	±---	APPROVED BY KPRASAD		DATE 2007/11/28		molex MOLEX INCORPORATED	
		2 PLACES ±---		±---	±---						
1 PLACE ±---		±---	±---	MATERIAL NO. 85015-9005		DOCUMENT NO. SD-85015-9005		SHEET NO. 1 OF 1			
		ANGULAR ±---°		DRAFT WHERE APPLICABLE MUST REMAIN WITHIN DIMENSIONS		SIZE A3		THIS DRAWING CONTAINS INFORMATION THAT IS PROPRIETARY TO MOLEX INCORPORATED AND SHOULD NOT BE USED WITHOUT WRITTEN PERMISSION			

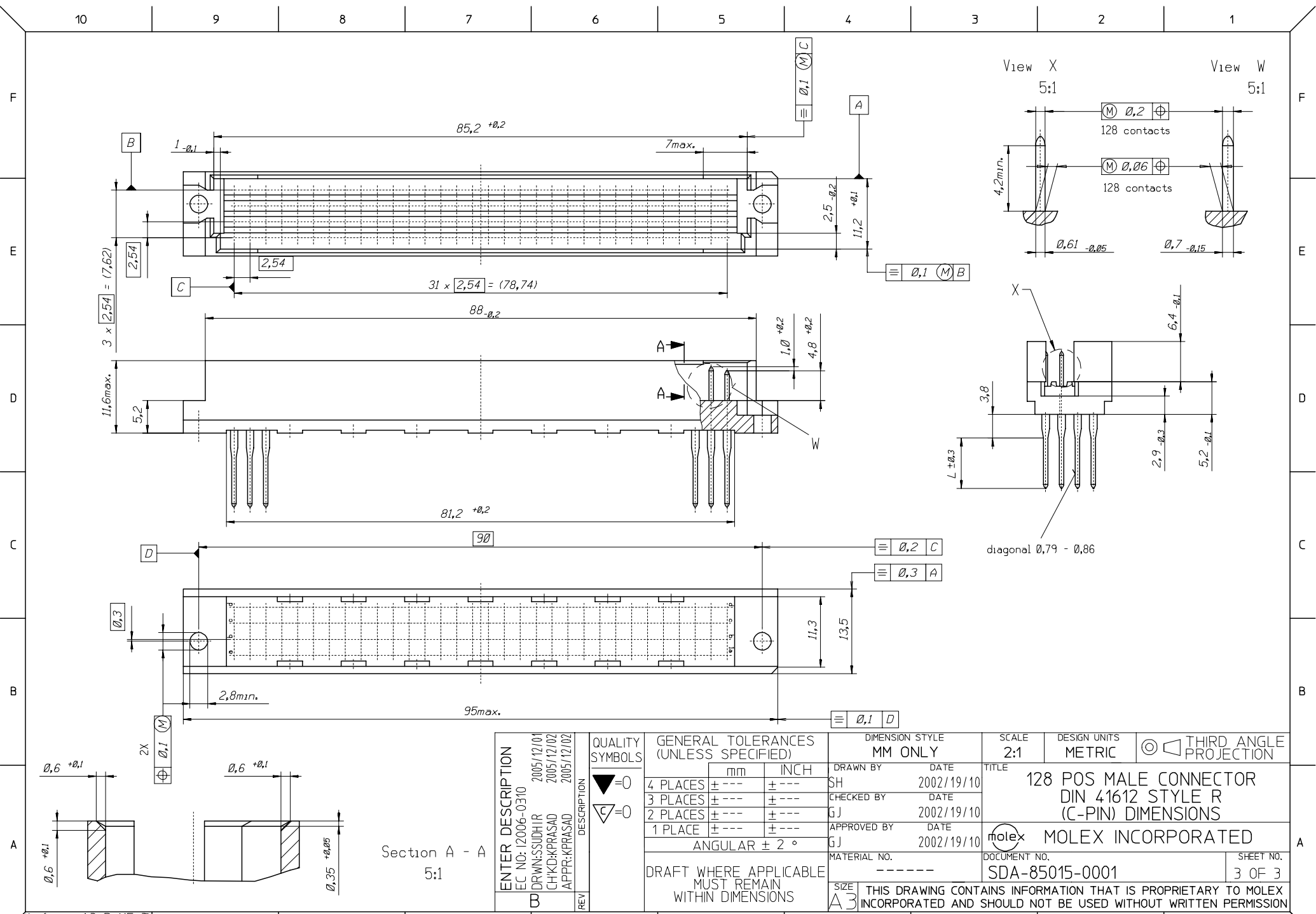
PART NO.  
DWG. NO.



Section A - A  
5:1

first release ECN No. MC1998-2790		REVISE ONLY ON CAD SYSTEM		SH. REV.
REVISIONS		TITLE		128 pos. Male connector DIN 41612 style R (C-Pin) Dimensions
FOR PREVIOUS REVISIONS SEE MRI LIST		DRAWING PROJECT NAME		SDA-85015-0001
UNLESS OTHERWISE SPECIFIED TOLERANCES ANGULAR ±2°		EQUIVALENT DIMENSION		IN. <input type="checkbox"/> MM <input checked="" type="checkbox"/>
3 PLACE ± .		DRAWN BY		CD
2 PLACE ± .		CHECKED BY		KN
1 PLACE ± .		DATE		98/04/27
DRAWN WHERE APPLICABLE MUST REMAIN WITHIN DIMENSIONS		SCALE		2:1
DESIGN DIMENSION		SHEET NO.		1 OF 1
EQUIVALENT DIMENSION		DATE		98/04/27
IN. <input type="checkbox"/> MM <input checked="" type="checkbox"/>		SHEET NO.		1 OF 1
SCALE		DATE		98/04/27
2:1		DATE		98/04/27
PART NO.		SHEET NO.		1 OF 1
MOLEX EUROPE		DATE		98/04/27
SDA-85015-0001		DATE		98/04/27
DWG. NO.		DATE		98/04/27
SDA-85015-0001		DATE		98/04/27
PART NO.		DATE		98/04/27
MOLEX EUROPE		DATE		98/04/27
SDA-85015-0001		DATE		98/04/27

7132-1283 10 9 8 7 6 5 4 3 2 1



<b>ENTER DESCRIPTION</b> EC NO: I2006-0310 DRWN: SUDHIR 2005/12/01 CHKD: KPRASAD 2005/12/02 APPR: KPRASAD 2005/12/02	<b>QUALITY SYMBOLS</b> $\nabla = 0$ $\triangle = 0$	<b>GENERAL TOLERANCES (UNLESS SPECIFIED)</b>		<b>DIMENSION STYLE</b> MM ONLY	<b>SCALE</b> 2:1	<b>DESIGN UNITS</b> METRIC	<b>THIRD ANGLE PROJECTION</b>
		4 PLACES $\pm$ --- $\pm$ --- 3 PLACES $\pm$ --- $\pm$ --- 2 PLACES $\pm$ --- $\pm$ --- 1 PLACE $\pm$ --- $\pm$ ---	mm      INCH	DRAWN BY SH      DATE 2002/19/10	TITLE <b>128 POS MALE CONNECTOR          DIN 41612 STYLE R          (C-PIN) DIMENSIONS</b>		
		<b>DRAFT WHERE APPLICABLE          MUST REMAIN          WITHIN DIMENSIONS</b>		CHECKED BY GJ      DATE 2002/19/10	APPROVED BY GJ      DATE 2002/19/10	<b>MOLEX INCORPORATED</b>	DOCUMENT NO. <b>SDA-85015-0001</b>