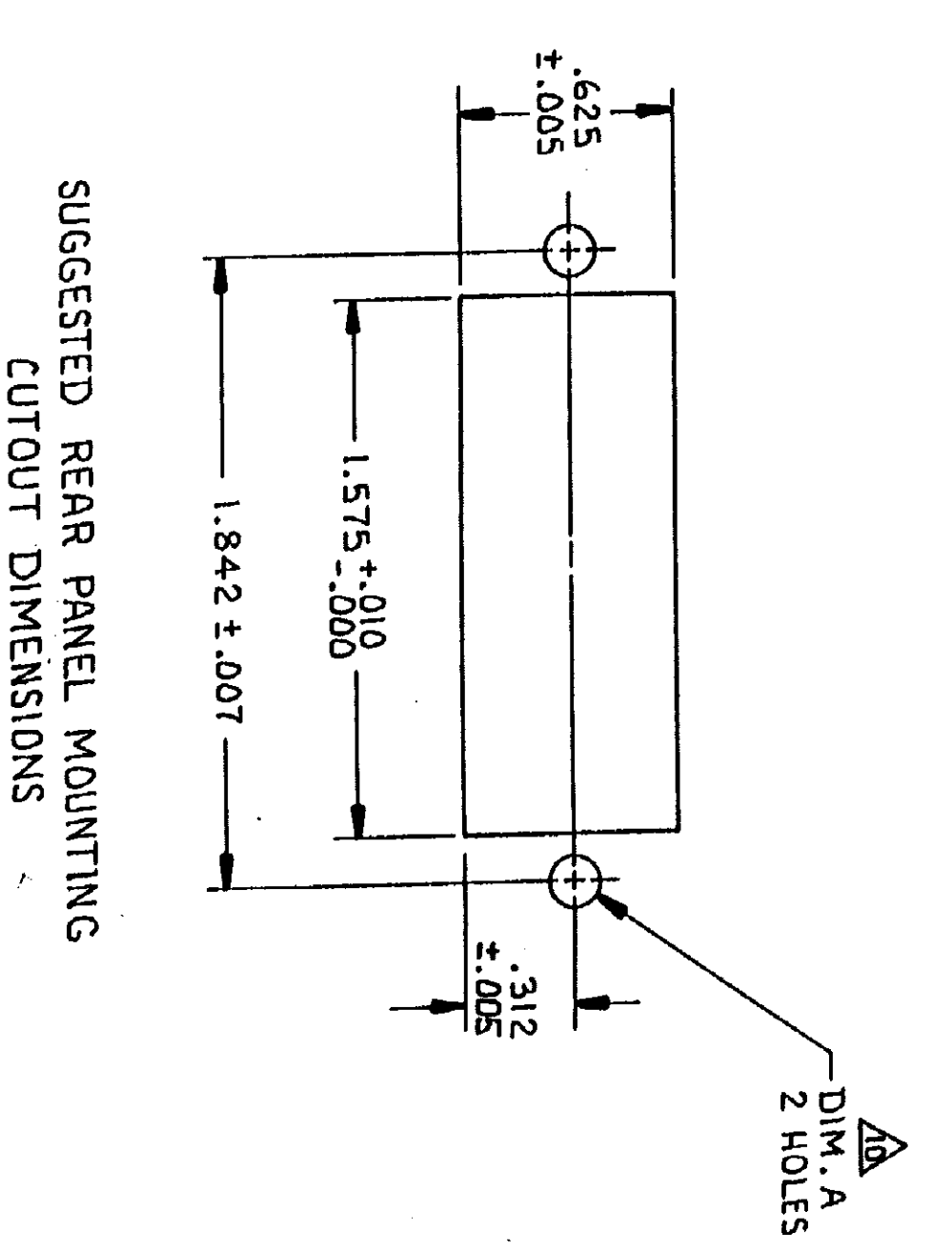
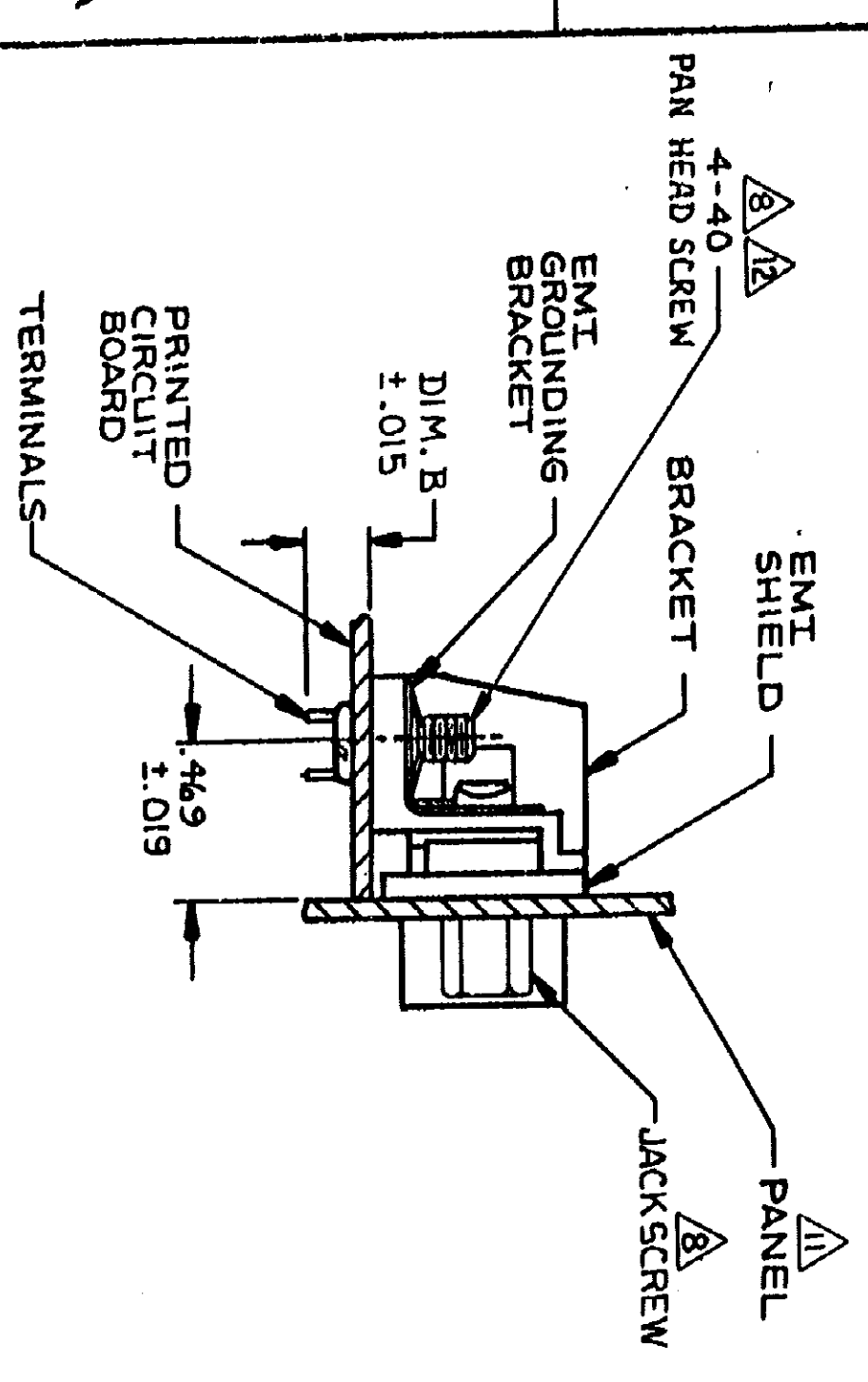
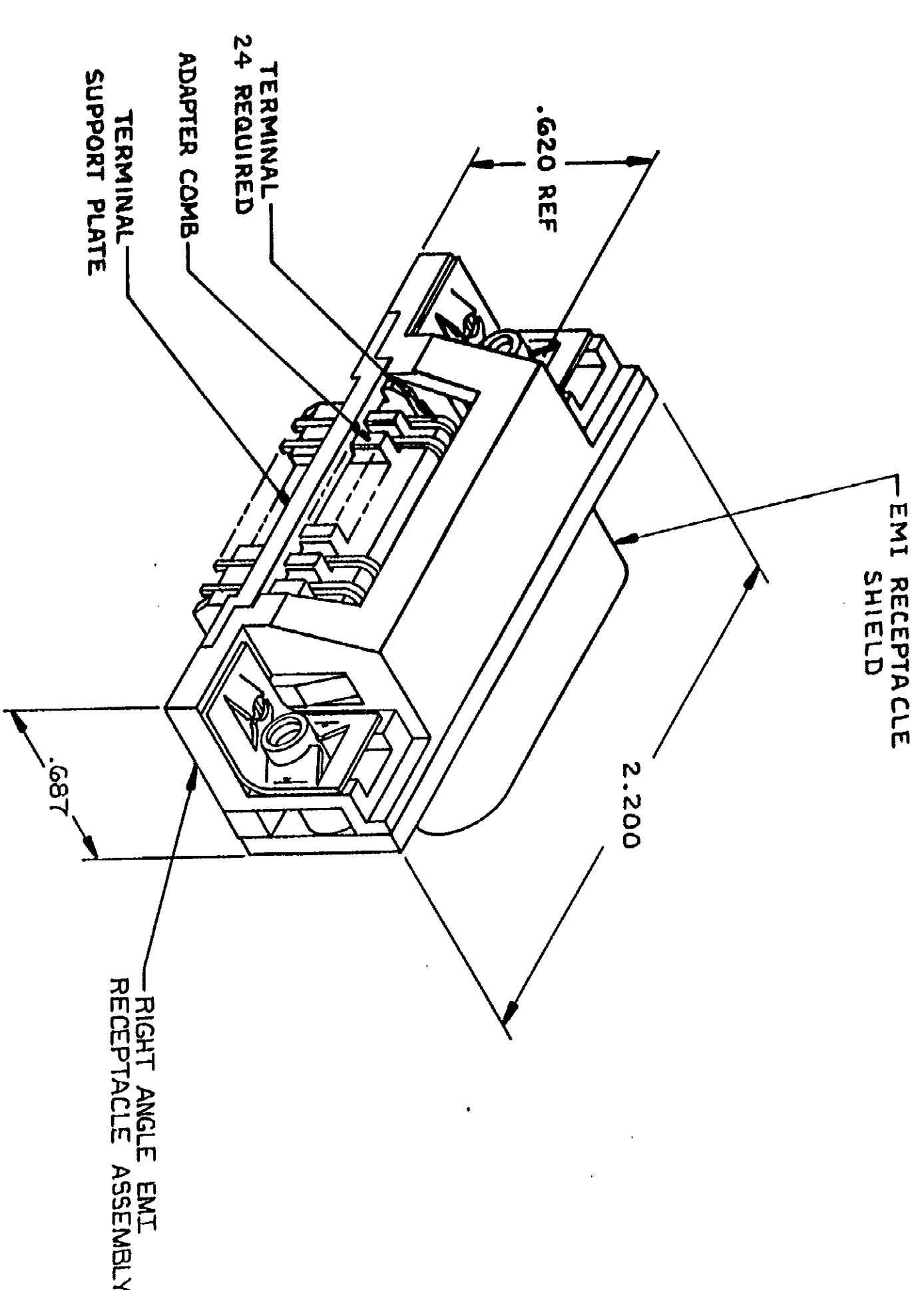
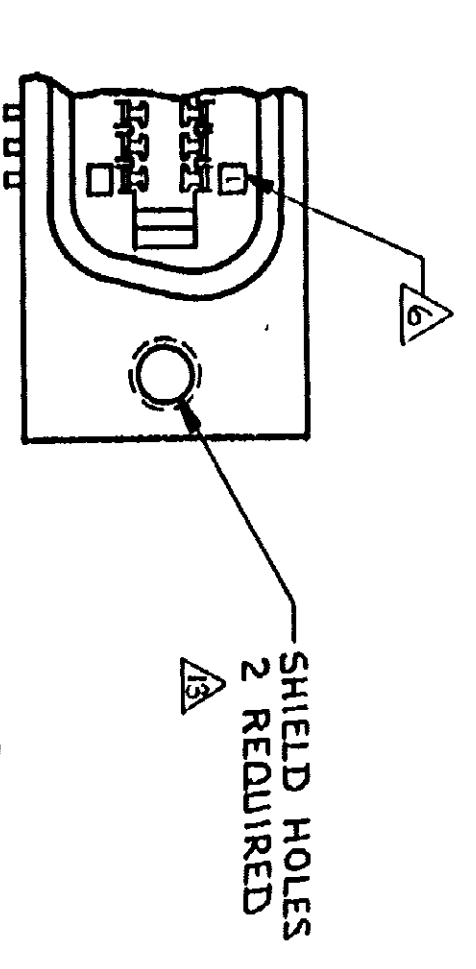
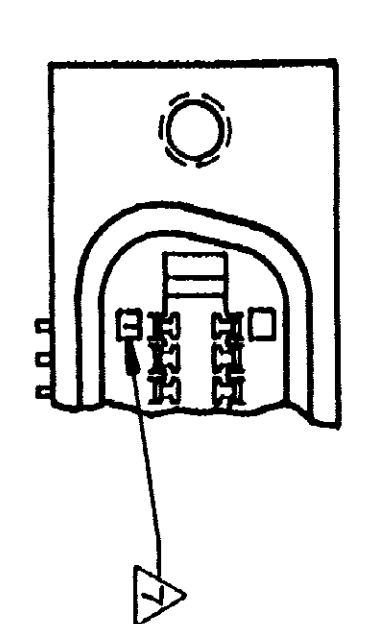
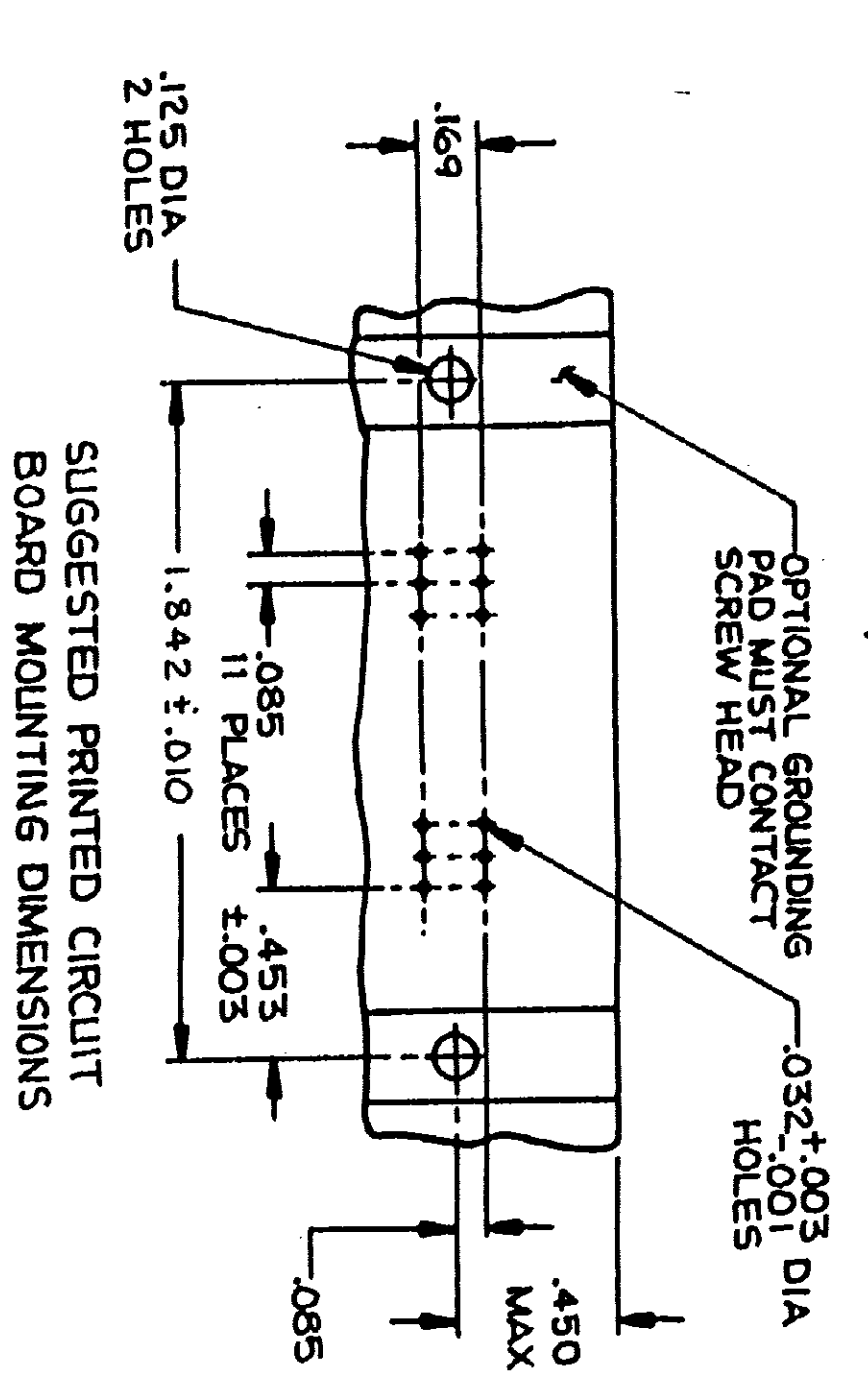


THIS DRAWING IS UNPUBLISHED. RELEASED FOR PUBLICATION
 © AMP INCORPORATED, HARRISBURG, PA. ALL INTERNATIONAL RIGHTS
 RESERVED. AMP PRODUCTS MAY BE COVERED BY U.S. AND FOREIGN PATENTS AND/OR PATENT PENDING.

REV	DATE	APPROVED	LOCAL DIST
1	11-30-78	LHS	AA 20
2	08-06-84	EDN AA-65/4	



- 1. MATERIAL: HOUSING, BRACKET, ADAPTER COMB AND TERMINAL SUPPORT PLATE - THERMOPLASTIC (BLACK); EMI SHIELD - BRIGHT NICKEL OVER COPPER PLATED DIE CASTING; TERMINALS-TAILS-TIN LEAD OVER NICKEL PLATED HIGH STRENGTH COPPER ALLOY; MATING SURFACE-LOCALIZED GOLD OVER NICKEL PLATED HIGH STRENGTH COPPER ALLOY.
- 2. THE CONTACT SURFACES OF THE TERMINALS ARE COATED WITH LUBRICANT.
- 3. CENTER-TO-CENTER SPACING OF TERMINALS IS .085.
- 4. ALL DIMENSIONS SHOWN ARE FOR REFERENCE ONLY UNLESS OTHERWISE SPECIFIED.
- 5. DETAILS A & B ARE VIEWED FROM MATING SIDE OF RECEPTACLE ASSEMBLY.
- 6. TERMINAL 1 LOCATED IN THIS ROW FOR STANDARD ORIENTATION.
- 7. TERMINAL 1 LOCATED IN THIS ROW FOR REVERSE ORIENTATION.
- 8. SCREWS SHOWN FOR REFERENCE ONLY. RECOMMENDED HARDWARE KIT, 55427Z-1, FOR USE WITH PART NUMBER 553811-3 & 4. HARDWARE KIT IS SHOWN FOR REFERENCE ONLY.
- 9. EMI SHIELD IS ASSEMBLED TO CONNECTOR BEFORE SHIPMENT.
- 10. FOR IEEE APPLICATION DIM. A SHALL BE .192 ± .003.
- 11. PANEL THICKNESS RANGE: .062 MAX.
- 12. STAINLESS STEEL SCREWS RECOMMENDED, BECAUSE OF CONTACT WITH SOLDER BATH.
- 13. HOLES TO BE TAPPED AFTER PLATING.

APPLICATION	DIM. B	DIM. A	UNC-28	UNC-28	UNC-28	UNC-28	UNC-28
STANDARD	.157	.126 ± .003	UNC-28	UNC-28	UNC-28	UNC-28	UNC-28
IEEE-488	.157	.152 ± .003	UNC-28	UNC-28	UNC-28	UNC-28	UNC-28

CONTRACT NO.	DRAWING NO.
00779	553811