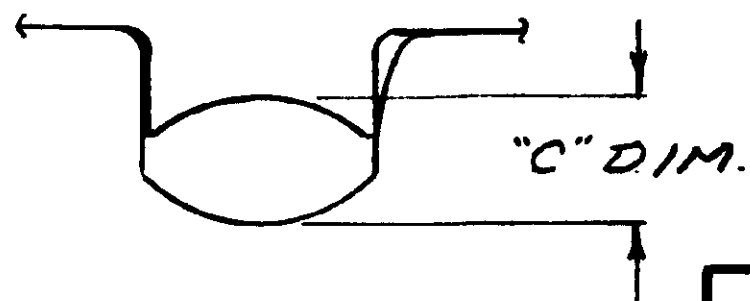


GAGE DIMENSIONS APPLY WHEN TOOL IS BOTTOMED BUT NOT UNDER PRESSURE.

FOR REPLACEMENT OF PARTS OTHER THAN LISTED, TOOL SHOULD BE RETURNED TO OUR FACTORY TO INSURE PROPER CERTI-CRIMP ADJUSTMENT.



GAGE DIM.	
GO	NOGO
.119	.125

REVISED	BY	DATE
M	MO	
L	CT MO	2-5
H	B.S. B.P.	4-20
H	B.S. B.P.	8-22-62
G	C.M. C.M.	4-15-63
F	C.M. C.M.	3-1-63
E	R.Y. R.Y.	2-2-63
D	R.Y. C.M.	6-13-62

NUMBER	DESCRIPTION
45329	

4	A	313736-3	LABEL BLUE	9
1	A	305076	STOP	8
1	A	321016-4	SCREW	7
2	A	21045-6	RING - RETAINING	6
1	A	300449	PIN - RETAINING	5
1	A	39364	SPRING	4
1	A	39366	COLLAR	3
2	C	8-59558-0	PIN - RETAINING	2
4	A	21045-3	RING - RETAINING	1

DWG SIZE	NUMBER	NAME	REMARKS	ITEM NO.
©1959 BY AMP INCORPORATED. ALL RIGHTS RESERVED. AMP PRODUCTS COVERED BY PATENTS AND/OR PATENTS PENDING.			CUSTOMER COPY REFERENCE ONLY	
DR. <i>[Signature]</i> 5-10-62		MATERIAL AND FINISH //		AMP AMP INCORPORATED HARRISBURG PENNA.
CH. <i>[Signature]</i> 6-13-62		WIRE - RANGE - INSULATION 18-16 1-1		CLASS //
DE. <i>[Signature]</i> 6-13-62		TOLERANCE EXCEPT AS NOTED .015 .10 .121		TYPE VS LOC A B NO 45329 REF M
APP. <i>[Signature]</i> 6-13-62		NAME HAND TOOL ASSEMBLY		

PRINT DIMENSIONS IN INCHES DO NOT SCALE PRINT

8 | 7 | 6 | 5 | 4 | 3 | 2 | 1