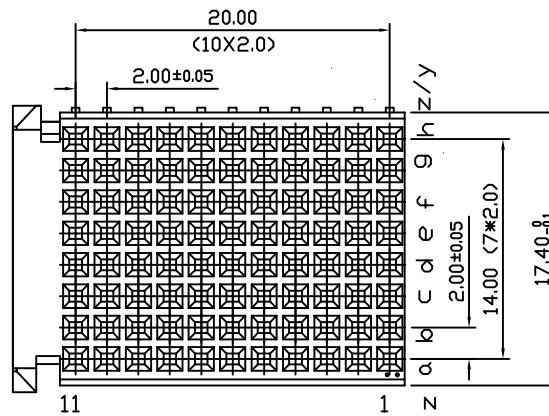
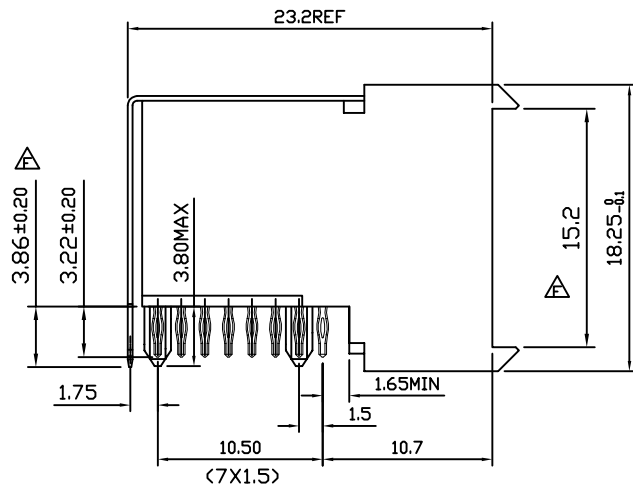


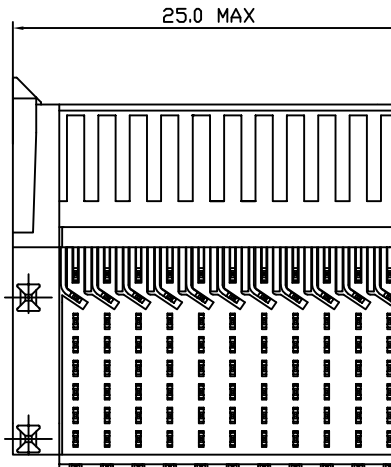
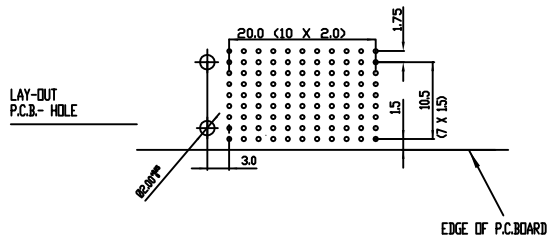
Tous droits strictement reserves. Reproduction ou communication a des tiers interdite sous quelque forme que ce soit sans autorisation ecrite du proprietaire. Propriete de c FCI. Droits de reproduction FCI.



All rights strictly reserved. Reproduction or issue to third parties in any form whatever is not permitted without written authority from the proprietor. Property of FCI. Copyright FCI.



**PERFORMANCE CHARACTERISTICS**  
 CURRENT RATING 1.5A AT 20°C (FULLY LOADED)  
 1 A AT 70°C (FULLY LOADED)  
 RATED VOLTAGE : 500 V AC (CONT /CONT)  
 OPERATING TEMPERATURE : -55°C TO 125°C  
 CONTACT RESISTANCE 20 MΩ MAX  
 INSERTION FORCE : 0.75N MAX/CONT  
 EXTRACTION FORCE : 0.15N MIN/CONT  
 INSULATION RESISTANCE : 10<sup>4</sup> MΩ MIN



- NOTES 1. LEAD FREE INDICATOR LF=LEAD FREE  
 PERFORMANCE LEVEL INDICATOR (REF DWG NO.BSC 201844.003)  
 2. THIS PRODUCT IS CSA APPROVED. THIS PRODUCT IS UL RECOGNIZED.  
 3. FOR RECOMMENDED PTH DIMENSIONS REFER DRAWING : BSA.201572.001  
 4. THIS PRODUCT (LF) MEETS EUROPEAN UNION DIRECTIVES AND OTHER COUNTRY REGULATIONS AS DESCRIBED IN GS-22-008

www.fciconnect.com			tolerance 1DEC ±0.2 1DEC 2DEC ±0.1 2DEC ANGLES ±1° HOEKEN	projection 	MM 			
Dr	M.Fret	04-01-00	Product family	MILLIPICS	size	A4	Scale	3/1
Eng			Spec ref		ECN			
Chr			Material					
Appr								
Chg no	MPACS 8+2R RA RCP CONN TYPE F/WITH SHIELDED			Chg no	BS,C ,202260,022		Rev.	F
catalog no	HM2R89PA810F----			CUSTOMER	sheet 1 of 1			

rev	ecn no	dr	date
A	CONVERSION REVISION 01	KN	14-09-01
B	I03-0070	BKP	12-12-03
C	DG05-0381	Kason	10-10-05
D	DG07-0362	Kason	05-09-07
E	DG10-0110	NZ	05-30-10
F	DG11-0060	TER	2011-03-14