

PART NUMBER	REV	TERMINATOR	FEED TYPE	DESCRIPTION
1528907-1	A	LEADMAKER	MECH POST FEED	CUTS CARRIER
1528907-2	A	BENCH	MECH PRE FEED	CUTS CARRIER
1528907-6	A	LEADMAKER	MECH POST FEED	CONTINUOUS CARRIER
7-1528907-1	A	LEADMAKER	MECH POST FEED	-1 AND SPARE PARTS
7-1528907-2	A	BENCH	MECH PRE FEED	-2 AND SPARE PARTS
7-1528907-6	A	LEADMAKER	MECH POST FEED	-6 AND SPARE PARTS
7-1528907-7	A	-	-	SPARE PARTS KIT

SET UP GAGE  
458637-3

REV	DATE	BY	CHKD
A	ECO-08-015842		

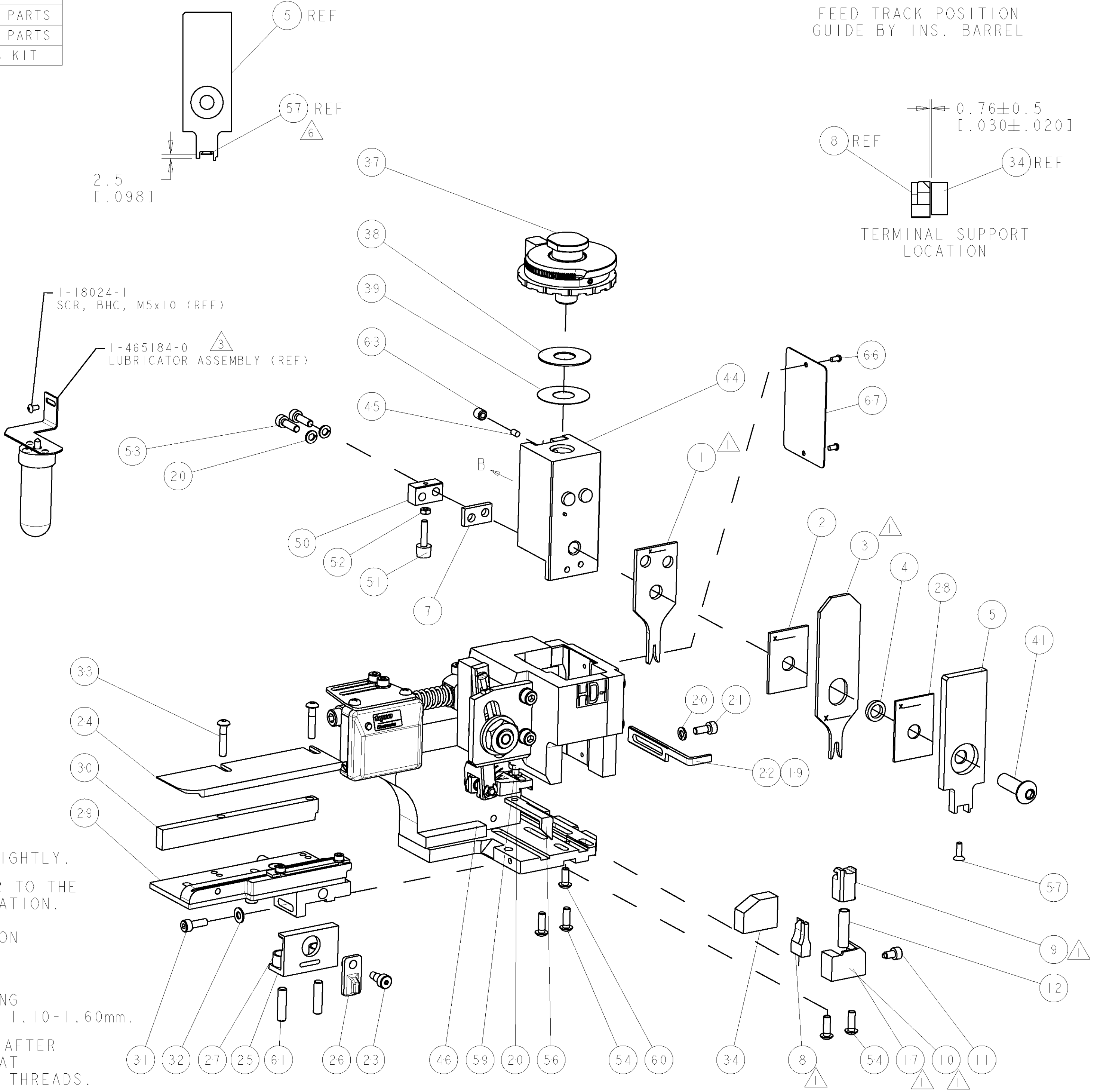
CRIMP	SIZE	TYPE	RANGE
WIRE	1.17 [ .046 IN ]	F	0.14-0.35mm <sup>2</sup>
INSUL	2.90 [ .114 IN ]	O	1.10-1.50 [ .043- .059 IN ]

WIRE STRIP LENGTH	APPL INSTRUCTIONS
3.10-3.40 [ .122-.134 IN ]	408-8322 & 408-8490

TERMINAL APPL SPEC	KOSTAL DRG	FEED
7 502 919	-	8.00 [ .315 IN ]

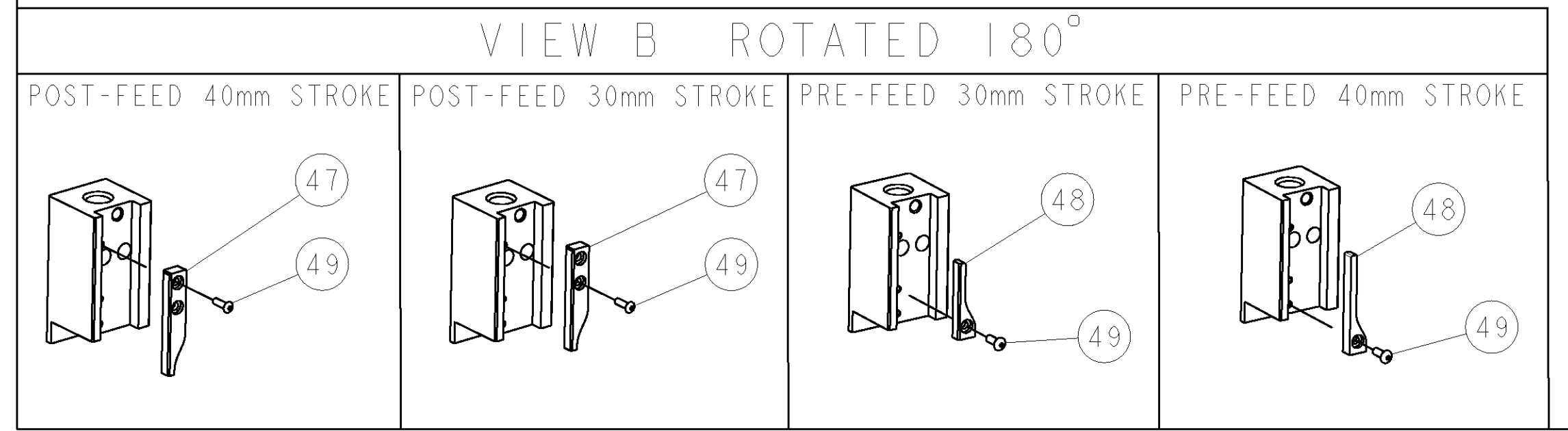
TE TERM PN	MANUF TERM PN	TE SEAL PN	MANUF SEAL PN
1949696-1	32124734100	1949520-1	10800507250
1949696-2	32140734100	-	-

WIRE SIZE	CRIMP HEIGHT	REF SETTING
0.35mm <sup>2</sup>	0.84 ± 0.03 [ .033 ± .001 IN ]	C5
0.14mm <sup>2</sup>	0.73 ± 0.03 [ .029 ± .001 IN ]	D3



- △ RECOMMENDED SPARE PARTS.
2. GREASE RAM, CAM, CAM FOLLOWER AND FEED ROD LIGHTLY.
- △ CERTAIN TERMINALS REQUIRE LUBRICATION. REFER TO THE APPLICATOR INSTRUCTION SHEET FOR MORE INFORMATION.
4. LUBRICATE DAILY PER THE APPLICATOR INSTRUCTION SHEET SUPPLIED WITH THE APPLICATOR.
- △ THIS APPLICATOR APPLIES TERMINAL WITH A SEAL. WIRE INSULATION DIA IS DEPENDENT ON SEAL BEING APPLIED. SEAL PN 1949520-1 INS. DIA RANGE IS 1.10-1.60mm.
- △ APPLY TORQ-SEAL IN ALLEN SOCKET TO FILL HOLE AFTER FLAT HD HAS BEEN ADJUSTED TO CORRECT HEIGHT AT QUALIFICATION. APPLY #1-23419-5 LOC-TITE TO THREADS.
- △ CRIMP DATA SUPPLIED BY THE TERMINAL MANUFACTURER.
- △ WIRE AND INSULATION RANGES ARE THAT OF THE TERMINAL.

\* WARNING  
ON INSTALLATION, SET WIRE DISC TO LARGEST WIRE SIZE SETTING. USE OF SETTINGS BELOW MIN. REQUIRED CRIMP HEIGHT SETTING WILL CAUSE DAMAGE TO CRIMP TOOLING.



ITEM NO	DESCRIPTION	QTY
84		1
83		1
82		1
81		1
80		1
79		1
78		1
77		1
76		1
75		1
74		1

REV	DATE	BY	CHKD	DESCRIPTION	ITEM NO				
-	-	-	-	-	73				
-	-	-	-	-	72				
-	1	1	1	1	1	1338705-3	DOCUMENTATION PACKAGE	71	
-	-	-	-	-	-	-	-	70	
-	-	-	-	-	-	-	-	69	
-	-	-	-	-	-	-	-	68	
-	1	1	1	1	1	461264-5	PLATE, IDENTIFICATION	67	
-	2	2	2	2	2	21017-2	SCREW, DRIVE	66	
-	-	-	-	-	-	-	-	65	
-	-	-	-	-	-	-	-	64	
-	1	1	1	1	1	3-18031-0	SCR, SET, CUP POINT M6 X 6.0	63	
-	-	-	-	-	-	-	-	62	
-	2	2	2	2	2	2-18032-5	SCR, SET, FLT POINT M5 X 20.0	61	
-	1	1	1	1	1	18024-7	SCR, BTN SKT HD CAP (M4 X 10.0)	60	
-	1	1	1	1	1	5-18022-2	SCR, HEX HD CAP M4 X 8.0	59	
-	-	-	-	-	-	-	-	58	
-	1	1	1	1	1	985575-3	SCR, FLT SKT HD CAP M3 X 10.0	57	
-	1	1	1	1	1	1338685-1	PAWL, FEED	56	
-	-	-	-	-	-	-	-	55	
-	4	4	4	4	4	18024-8	SCR, BTN SKT HD CAP (M4 X 12.0)	54	
-	2	2	2	2	2	9-18023-6	SCR, SKT HD CAP M4 X 14.0	53	
-	1	1	1	1	1	18030-1	NUT, HEX, REG M3	52	
-	1	1	1	1	1	811242-5	BUMPER, HOLD DOWN	51	
-	1	1	1	1	1	690753-2	SPACER, TONKER	50	
-	1	1	1	1	1	18024-3	SCR, BTN SKT HD CAP (M3 X 10.0)	49	
-	-	-	-	-	-	-	-	48	
-	1	1	1	1	1	1338676-1	CAM, UNIVERSAL PRE FEED	47	
-	1	1	1	1	1	1320999-3	APPLICATOR SUBASSEMBLY, HDI	46	
-	1	1	1	1	1	690191-1	PLUG, NYLON	45	
-	1	1	1	1	1	1338660-1	RAM	44	
-	-	-	-	-	-	-	-	43	
-	-	-	-	-	-	-	-	42	
-	1	1	1	1	1	2-18024-6	SCR, BTN SKT HD CAP (M8 X 25.0)	41	
-	-	-	-	-	-	-	-	40	
-	1	1	1	1	1	690125-1	SHIM SUB-ASSY	39	
-	1	1	1	1	1	469367-8	SHIM	38	
-	1	1	1	1	1	879103-3	FINE ADJUST HEAD ASSEMBLY	37	
-	-	-	-	-	-	-	-	36	
-	-	-	-	-	-	-	-	35	
-	1	1	1	1	1	2-1320934-5	SUPPORT, TERMINAL	34	
-	2	2	2	2	2	1-18024-0	SCR, BTN SKT HD CAP (M4 X 20.0)	33	
-	1	1	1	1	1	18027-2	WASHER, FLAT, REG M4	32	
-	1	1	1	1	1	1-18023-2	SCR, SKT HD CAP M4 X 12.0	31	
-	1	1	1	1	1	1320908-1	SPACER, STRIP GUIDE	30	
-	1	1	1	1	1	1633073-2	STRIP GUIDE ASSEMBLY	29	
-	1	1	1	1	1	1-455888-0	SPACER, CRIMPER	28	
-	2	2	2	2	2	1-22284-0	SPRING, COMPRESSION	27	
-	1	1	1	1	1	356835-1	LEVER, DRAG RELEASE	26	
-	1	1	1	1	1	240792-1	DRAG, TERMINAL	25	
-	1	1	1	1	1	1320928-1	PLATE, STRIP GUIDE	24	
-	1	1	1	1	1	980371-4	SCR, SKT HD SHLDR 5.0 DIA X 6.0	23	
-	1	-	1	-	-	690472-2	STRIPPER	22	
-	1	1	1	1	1	1-18023-1	SCR, SKT HD CAP M4 X 10.0	21	
-	4	4	4	4	4	18025-2	WASHER, SPRG LOCK, REG M4	20	
-	-	-	-	-	-	690472-1	STRIPPER	19	
-	-	-	-	-	-	-	-	18	
△	1	-	-	-	-	1338684-2	SHEAR HOLDER, FRONT	17	
-	-	-	-	-	-	-	-	16	
-	-	-	-	-	-	-	-	15	
-	-	-	-	-	-	-	-	14	
-	-	-	-	-	-	-	-	13	
-	1	1	1	1	1	3-22280-3	SPRING, COMPRESSION	12	
-	1	1	1	1	1	356885-5	STOP, SHEAR	11	
-	-	1	1	-	-	1-1320921-0	SHEAR HOLDER, FRONT, CUT	10	
-	1	1	1	1	1	318707-1	FLOATING SHEAR, FRONT	9	
△	1	2	2	2	1	1	9-1633138-1	ANVIL, COMBINATION	8
-	1	1	1	1	1	240641-5	SPACER	7	
-	-	-	-	-	-	-	-	6	
-	1	1	1	1	1	1338680-2	DEPRESSOR, SHEAR	5	
-	1	1	1	1	1	1-238011-0	BLOCK, CRIMPER SPACER	4	
△	1	2	2	2	1	1	1-904741-4	CRIMPER, INSUL O PREMIUM	3
△	1	1	1	1	1	1	1-455888-6	SPACER, CRIMPER	2
△	1	2	2	2	1	1	5-568176-2	CRIMPER, WIRE	1

Tyco Electronics  
Harrisburg, PA 17105-3608

3 JUN 2008  
M. CLIFFORD

FINE ADJUST SIDE FEED HDI APPLICATOR

SCALE 3:5 SHEET 1 OF 1 REV A