

1 2 3 4 5 6 7

A

A

B

B

C

C

D

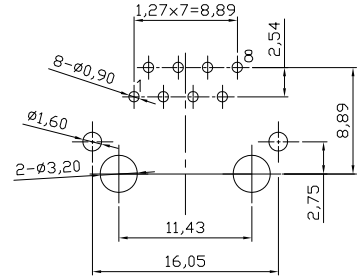
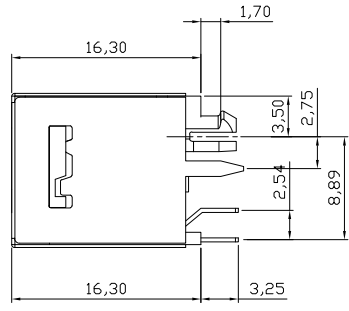
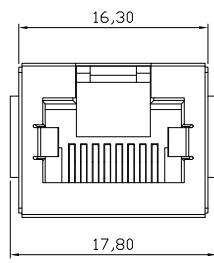
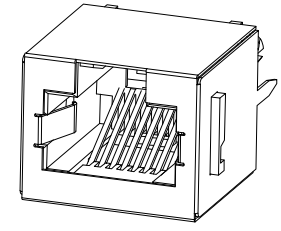
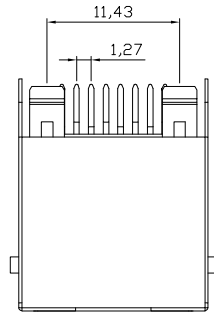
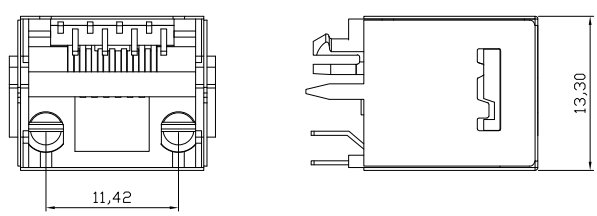
D

E

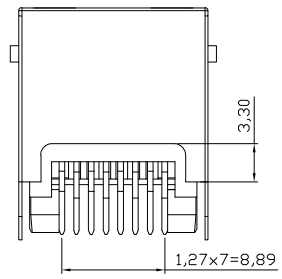
E

F

F



PC Board Layout
Component Side Shown



NOTES:

Mechanical:

1. Housing material : High Temp. UL94V-0 , Color: Black
2. Contact material: Phosphor Bronze t=0.35mm
3. Contact plating: Contact area---Selective gold plating
Tails---Tin plated all over 50u" Nickel
4. Shell material: Copper Alloy
5. Shell plating: Nickel plated
6. PCB Retention Pre-solder: 1 LB min.
7. PCB Retention Post-solder: 10 LBS min.

Electrical:

1. Voltage Rating: 125VAC.
2. Current Rating: 1.5AMP.
3. Contact Resistance: 35mΩ max.
4. Insulation Resistance: 1000MΩ min. @ 500 VDC
5. Dielectric Strength: 1000 VAC 60Hz, 1 min.
6. Operation: 750 cycles min.

Environmental:

1. Storage: -40°C To +85°C
2. Operation: -40°C~+85°C
3. Wave Soldering Temperature: 255~265°C(5-10S)

Packing: Tray

Order code: A-2014-2-X-LP/FS

Contact plating:
1: selective 15u" gold
2: selective 30u" gold
3: selective 50u" gold

RoHS compliant
Unit:mm

Scale	Free					Date	Name	Customer-No.
TOLERANCE					Drawn	10.05.2013	Amy	ASSMANN WSW-No. A-2014-2-X-LP/FS
X.X	±0.20				Approved	10.05.2013	Amy	
X.XX	±0.15							
X.XXX	±0.10							
DIM	TOL							Drawing-No.
								ASS 5711 CO
		①	Drawn	10.05.2013	Amy			rev00
Angle	±5°	Id.	Modification	Date	Name			SHEET



1 2 3 4 5 6 7

H

H