

Table with 3 columns: PART NUMBER, REV, FIRST USED. Rows include 466320-1 AK, 466320-2 AK, 466320-3 AK, 466320-4 AK, and 7-466320-7 AA.

SEE DRAWING 466320-3

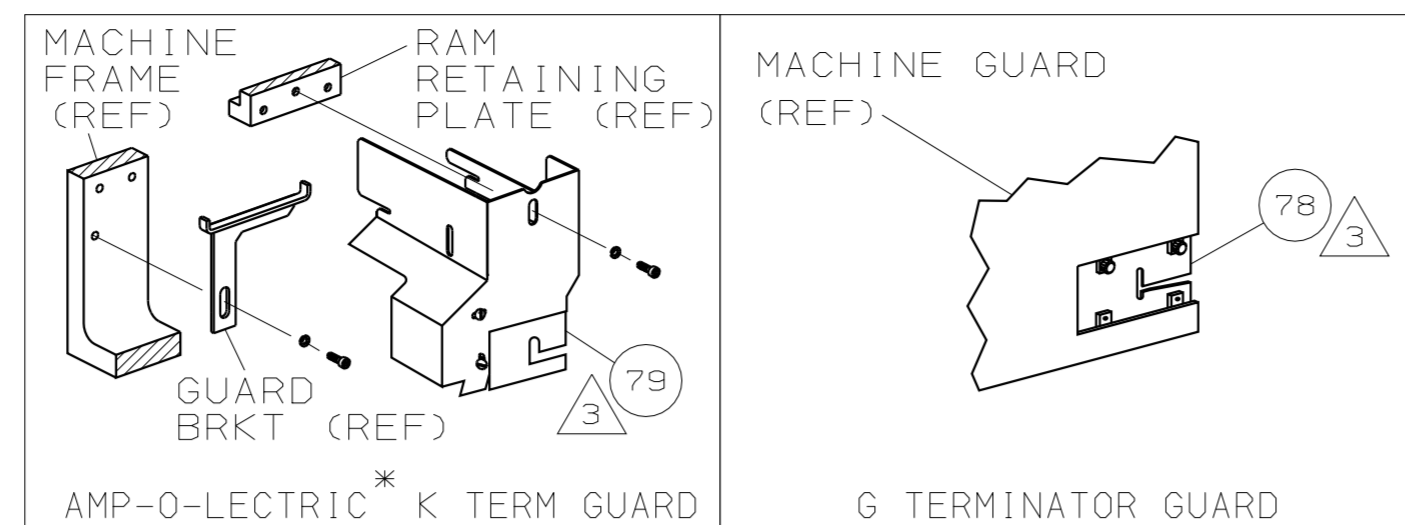
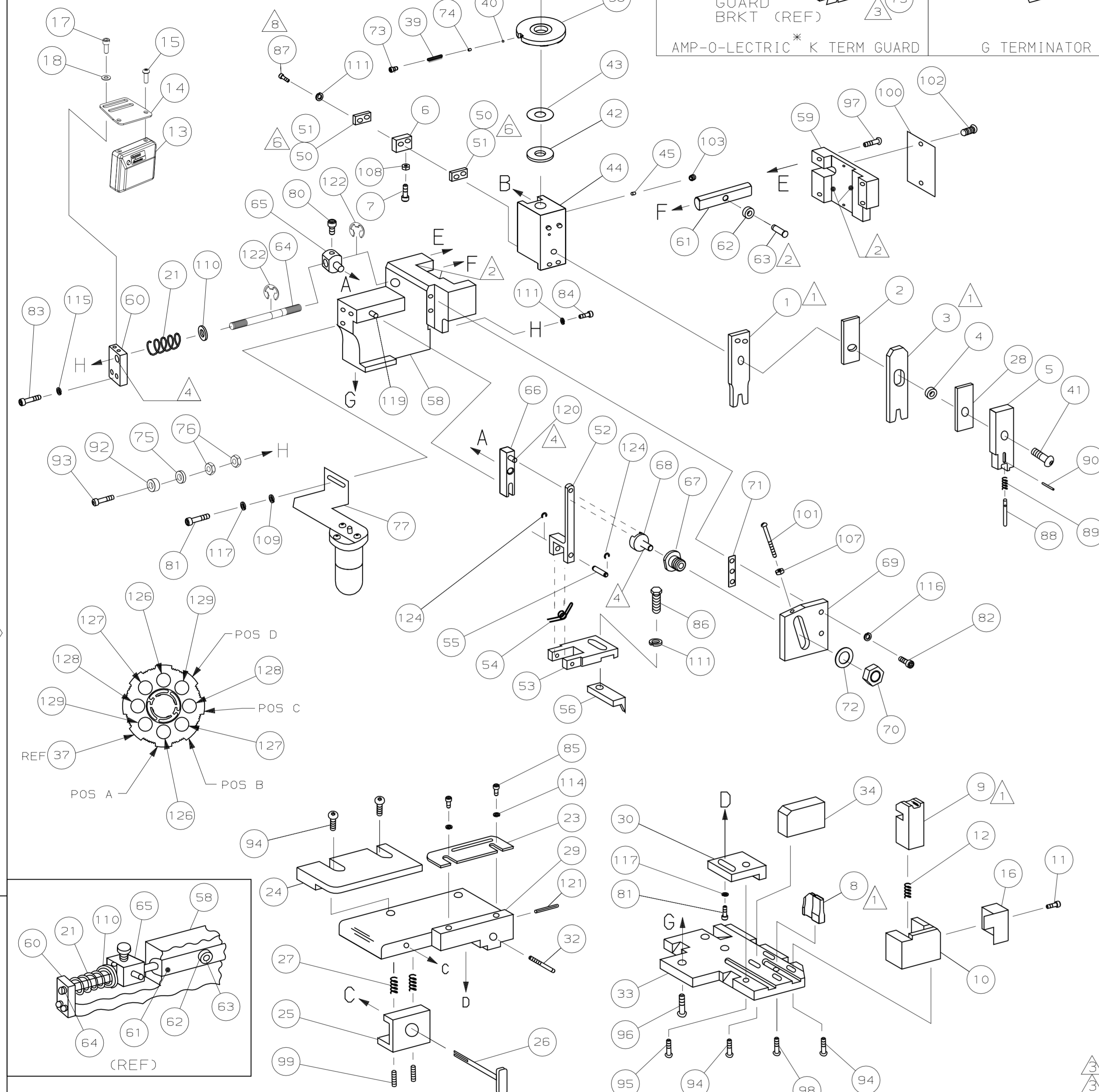


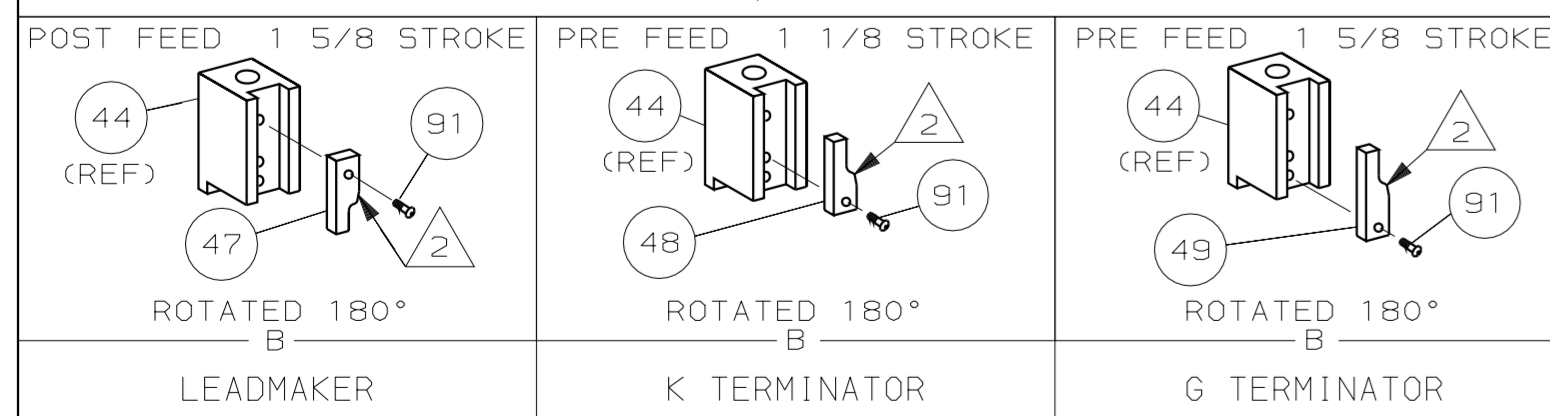
Table with columns: PIN, SOCKET, and part numbers (61116, 350561, 350699, 926886, 61527, 170147, 926885).

Table with columns: PAD LTR, CRIMP HEIGHT, WIRE SIZE, CRIMP, WIRE, INSUL, FEED, APPL INST, SET UP GAGE, LAYOUT.

Table with columns: -1 LEADMAKER MECH POST FEED, -2 BENCH MODEL K MECH PRE FEED, -4 BENCH MODEL G MECH PRE FEED, -77 SPARE TOOLING KIT, and part numbers.

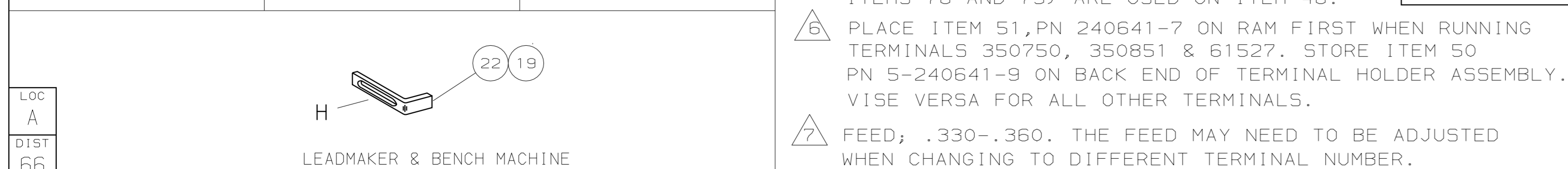
Large table with columns: QTY RECD PER ASSY, PART NO, DESCRIPTION, ITEM NO, REVISION OF EACH ASSY NO (WHEN BLANK, USE DWG REVISION), PARTS LIST.

* Trademark of AMP Incorporated



- 1 RECOMMENDED SPARE PARTS.
2 GREASE LIGHTLY.
3 GUARD MUST BE IN PLACE WHEN OPERATING APPLICATOR IN A BENCH MACHINE.
4 LUBRICATE DAILY USING NO. 20 MACHINE OIL.
5. ITEMS WITH QTY OF REF SPECIFIED (EXCEPT ITEMS 78 AND 79) ARE USED ON ITEM 46.
6 PLACE ITEM 51, PN 240641-7 ON RAM FIRST WHEN RUNNING TERMINALS 350750, 350851 & 61527. STORE ITEM 50 PN 5-240641-9 ON BACK END OF TERMINAL HOLDER ASSEMBLY. VISE VERSA FOR ALL OTHER TERMINALS.
7 FEED, .330-.360. THE FEED MAY NEED TO BE ADJUSTED WHEN CHANGING TO DIFFERENT TERMINAL NUMBER.

8 CUT TO LENGTH AT ASSY.



THIS DRAWING IS A CONTROLLED DOCUMENT

RELEASED FOR PUBLICATION APRIL 6, 1998 BY AMP INCORPORATED. ALL RIGHTS RESERVED.