

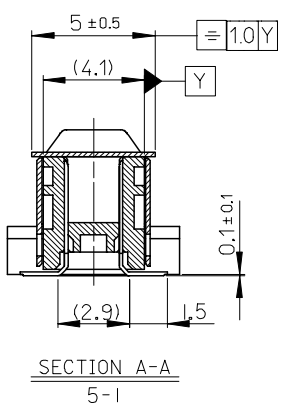
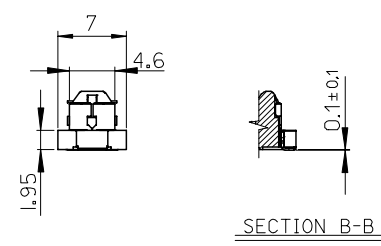
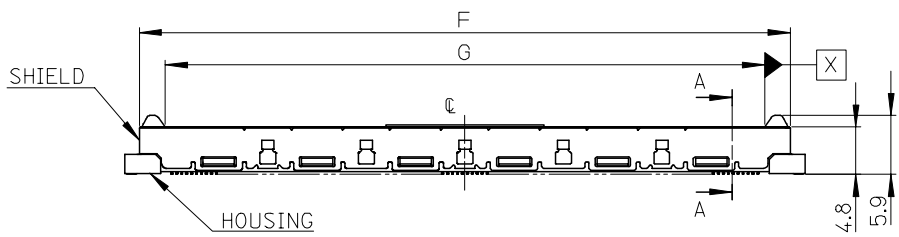
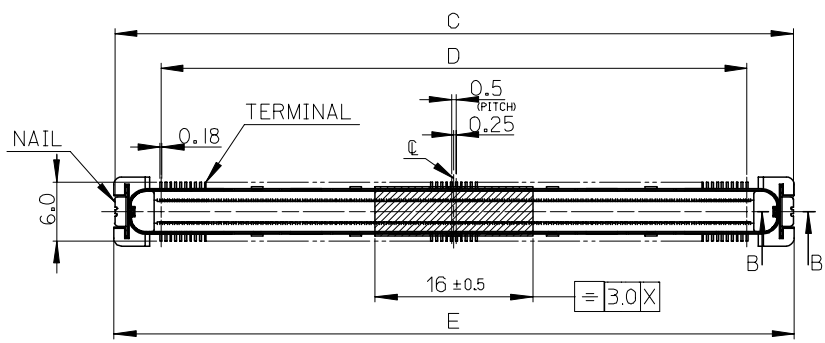
NOTES

1. 材質
 MATERIAL
 ハウジング : ガラス入りLCP、黒色、UL94V-0
 HOUSING : GLASS FILLED LIQUID CRYSTAL POLYMER, BLACK, UL94V-0
 ターミナル : 銅合金
 TERMINAL : COPPER ALLOY
 シールド : ステンレス鋼
 SHIELD : STAINLESS STEEL
 ネイル : 銅合金
 NAIL : COPPER ALLOY
 吸着テープ : 耐熱樹脂
 VACUUM TAPE : HEAT RESISTING RESIN

2. めっき仕様
 PLATING
 ターミナル
 TERMINAL
 接点部 : 金めっき
 CONTACT AREA : GOLD
 半田付け部 : 錫めっき
 SOLDER TAIL AREA : TIN
 下地めっき : ニッケルめっき
 UNDER-PLATING : NICKEL

ネイル
 NAIL
 ニッケル下地錫めっき
 TIN OVER NICKEL PLATING

3. テールとネイルの平坦度 : 0.1MAX
 COPLANARITY : 0.1 MAXIMUM



48.9	39.5	49.1	46.1	40.88	501493-1610	501493-1600	160
58.9	49.5	59.1	56.1	50.88	501493-2010	501493-2000	200
68.9	59.5	69.1	66.1	60.88	501493-2410	501493-2400	240
C	D	E	F	G	TRAY PACKAGE	CONNECTOR	CIRCUIT

REVISED EC NO: J2007-0487 DRWN: AYOYAGI 2006/09/07 CHKD: THARUYAMA 2006/11/01 APPR: NUKITA 2006/11/02	GENERAL TOLERANCES (UNLESS SPECIFIED)		DIMENSION STYLE MM ONLY		SCALE 2:1	DESIGN UNITS METRIC	THIRD ANGLE PROJECTION
	10 UNDER	± 0.2	DRAWN BY YKOBAYASHI		DATE 2004/10/27	TITLE 0.5 B TO B CONN. SHIELD TYPE PLUG ASSY H=6	
	10 OVER 30 UNDER	± 0.25	CHECKED BY HIRATA		DATE 2004/10/27	MOLEX INCORPORATED MATERIAL NO. SEE CHART DOCUMENT NO. SD-501493-001 SHEET NO. 1 OF 2	
	30 OVER	± 0.3	APPROVED BY MSASAO		DATE 2004/10/27		
	ANGULAR	± 1 °	DRAFT WHERE APPLICABLE MUST REMAIN WITHIN DIMENSIONS				

10 9 8 7 6 5 4 3 2 1

F

E

D

C

B

A

F

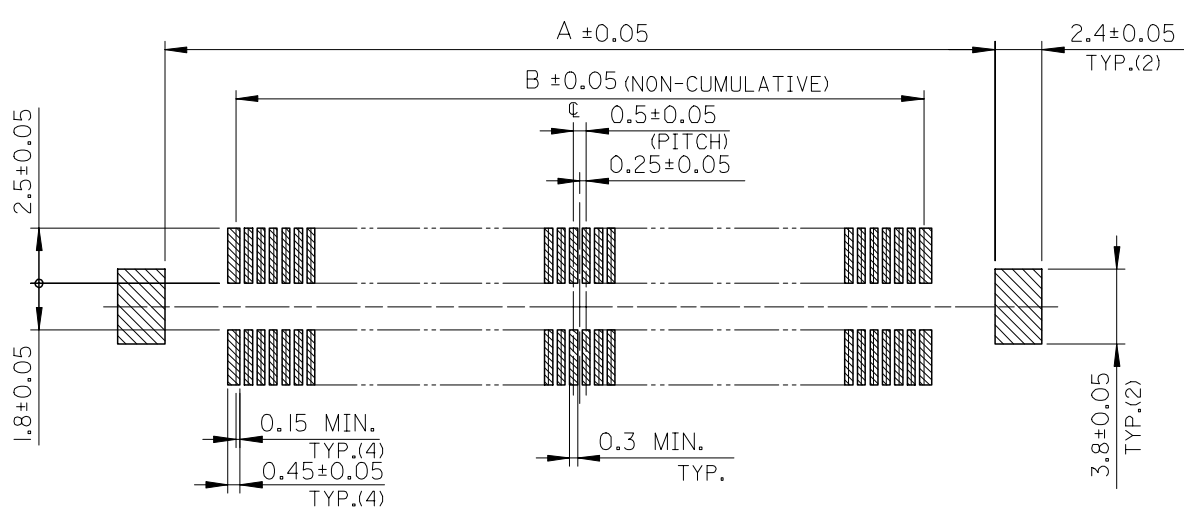
E

D

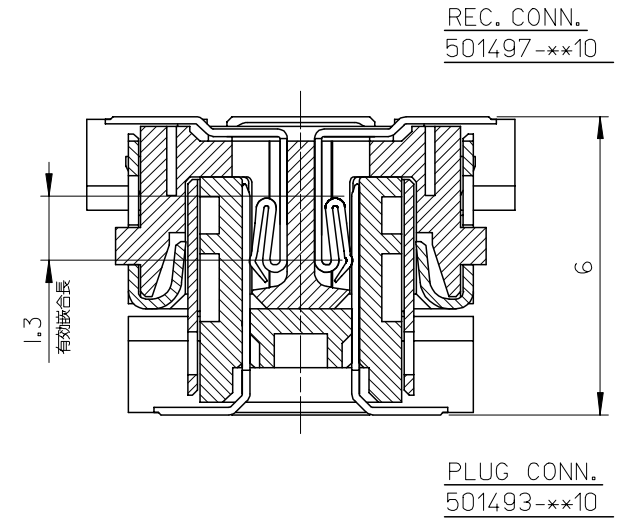
C

B

A

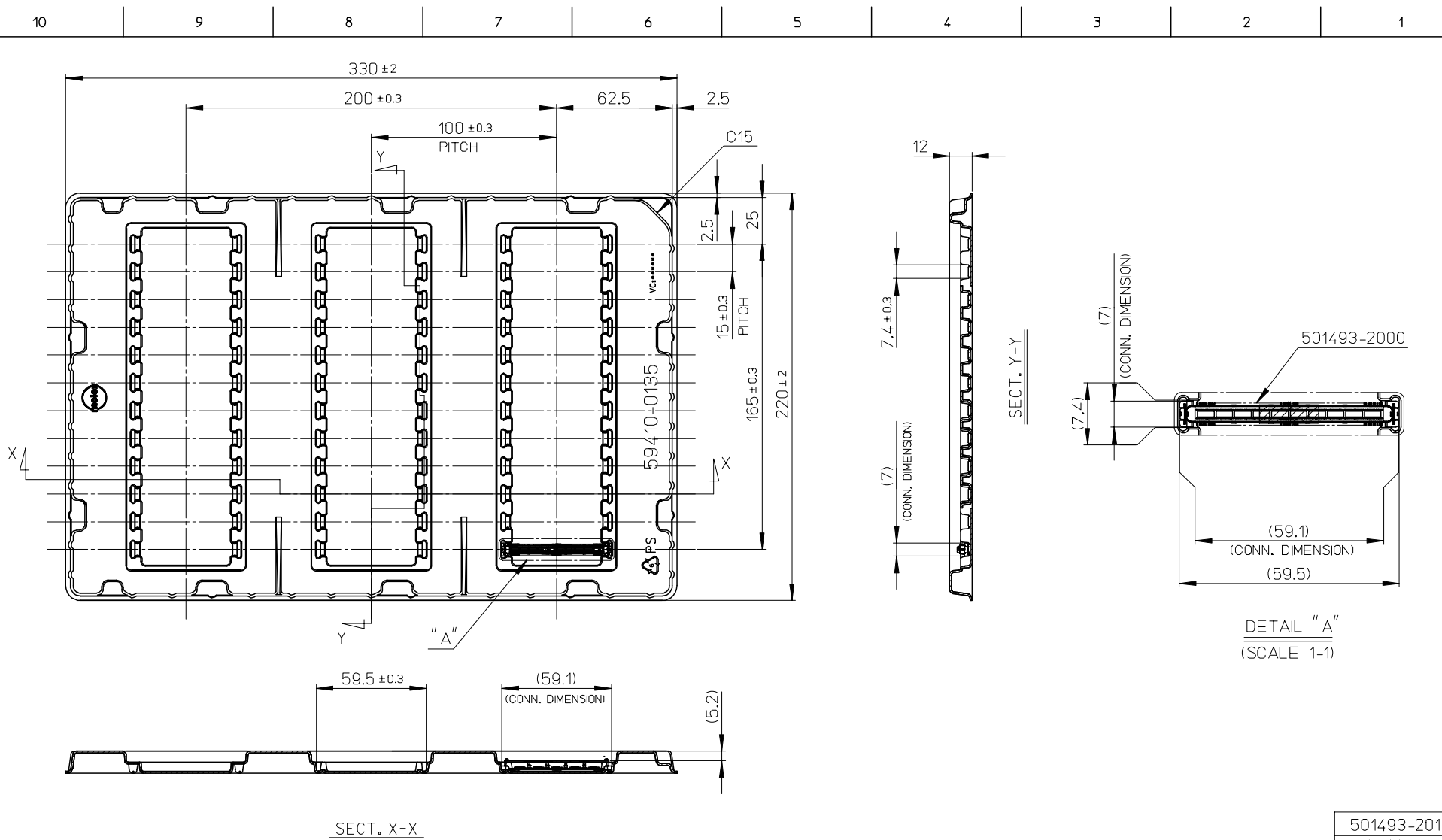


推奨基板レイアウト
RECOMMENDED P.C.B LAYOUT



45.4	39.5	501493-1610	160
55.4	49.5	501493-2010	200
65.4	59.5	501493-2410	240
A	B	TRAY PACKAGE	CIRCUIT

REVISED EC NO: J2007-0487 DRWN: A0YAGI 2006/09/07 CHKD: THARUYAMA 2006/11/01 APPR: NUKITA 2006/11/02	GENERAL TOLERANCES (UNLESS SPECIFIED)		DIMENSION STYLE MM ONLY		SCALE ---	DESIGN UNITS METRIC	THIRD ANGLE PROJECTION	
	10 UNDER	± 0.2	DRAWN BY YKOBAYASHI	DATE 2004/10/27	TITLE 0.5 B TO B CONN. SHIELD TYPE PLUG ASSY H=6			
	10 OVER 30 UNDER	± 0.25	CHECKED BY HIRATA	DATE 2004/10/27				
	30 OVER	± 0.3	APPROVED BY MSASAO	DATE 2004/10/27	MOLEX INCORPORATED			
	ANGULAR	$\pm \dots^\circ$	MATERIAL NO.	DOCUMENT NO. SD-501493-001				
D	DRAFT WHERE APPLICABLE MUST REMAIN WITHIN DIMENSIONS		SEE CHART		THIS DRAWING CONTAINS INFORMATION THAT IS PROPRIETARY TO MOLEX INCORPORATED AND SHOULD NOT BE USED WITHOUT WRITTEN PERMISSION			



501493-2010
適用製品番号
APPLICABLE PART No.

注記

- 一般公差: ±0.5
GENERAL TOLERANCES: ±0.5
- 各部の反りは1.5MAX.
WARP: 1.5MAX.
- 梱包数: 36個
PACKAGING QUANTITY: 36PCS.
- トレイは180°反転させて重ねる。
180 DEGREES IS REVERSED AND A TRAY IS PILED UP.

RELEASED EC NO: J2006-2011 DRWN: Y.TOKUZONO 2005/12/16 CHKD: T.HARUYAMA 2005/12/16 APPR: T.HARUYAMA 2005/12/16 REV 0	GENERAL TOLERANCES (UNLESS SPECIFIED)		DIMENSION STYLE MM ONLY		SCALE 1:2	DESIGN UNITS METRIC	THIRD ANGLE PROJECTION		
	10 UNDER ±0.2	10 OVER 30 UNDER ±0.25	30 OVER ±0.3	DRAWN BY Y.TOKUZONO	DATE 2005/12/15	TITLE TRAY FOR 501493-2010 (0.5 B TO B CONN. SHIELD TYPE PLUG ASSY 200P H=6)			
	ANGULAR ±1°			CHECKED BY T.HARUYAMA	DATE 2005/12/15	MOLEX INCORPORATED			
	DRAFT WHERE APPLICABLE MUST REMAIN WITHIN DIMENSIONS			APPROVED BY N.UKITA	DATE 2005/12/15	MATERIAL NO. 59410135	DOCUMENT NO. SD-501493-003	SHEET NO. 1 OF 1	