

2011/02/24 15:59:39 TH.HI.JINO

DRAWING FOR REFERENCE: This is subject to change without notice

△	△	△	△	△	△	△	△	△	△	△	△
△	△	△	△	△	△	△	△	△	△	△	△
△	△	△	△	△	△	△	△	△	△	△	△
APPLICABLE STANDARD											
RATING	ELECTRIC SOURCE	PHASE	AC-DC	V	Hz	WEIGHT	0.6kg				
	DISSIPATION POWER					APPLICABLE CONNECTOR	UM-QP-1.5WOR3(GL318-0099-0) UM-QP-1.5WCR3A(GL318-0176-0)				
	AIR SOURCE					APPLICABLE CABLE	1.5D-2W				
	AIR CONSUMPTION					APPLICABLE EQUIPMENT					
	OPERATING TEMPERATURE LIMIT	°C ~ °C									
SPECIFICATIONS											
	ITEM	TEST METHOD				REQUIREMENTS	QT	AT			
	APPEARANCE, STRUCTURE AND FINISH	Visually and by measuring instrument.				According to drawing.	○	○			
	MARKING	Confirmed visually.				According to drawing.	○	○			
CONSTITUTION											
REMARKS						DRAWN	DESIGNED	CHECKED	APPROVED	RELEASED	
						11.2.18 H.KUDO	11.2.18 M.TAKAHASHI	11.2.18 M.Shimada	11.2.18 S. Sakabe		
Unless otherwise specified, refer to											
Note QT:Qualification Test AT:Assurance Test X:Applicable Test											
HRS HIROSE ELECTRIC CO.,LTD.						SPECIFICATION SHEET			PART NO. HT303/PO-P-2-T		
CODE NO. (OLD)			DRAWING NO.			CODE NO.			1		
			ELC4- 275821			CL 350-0152-0			1		

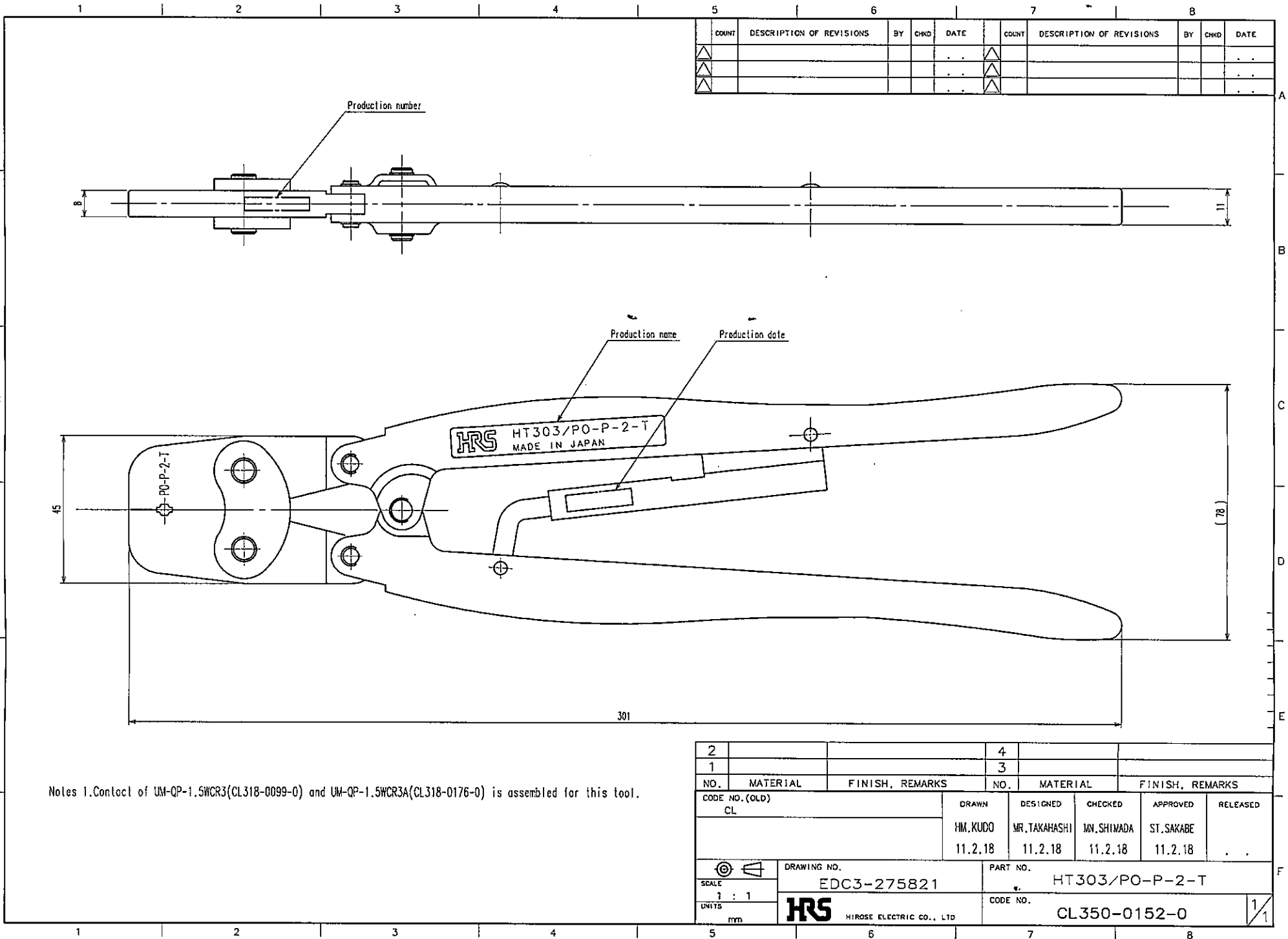
FROM001-1

TO
RF

2011/02/24 15:59:41 TH.HIJINO

DRAWING FOR REFERENCE: This is subject to change without notice

TO
RF



5		6				7		8			
COUNT	DESCRIPTION OF REVISIONS	BY	CHKD	DATE	COUNT	DESCRIPTION OF REVISIONS	BY	CHKD	DATE		
△					△						
△					△						

Notes 1. Contact of UM-QP-1.5WCR3(CL318-0099-0) and UM-QP-1.5WCR3A(CL318-0176-0) is assembled for this tool.

2				4	
1				3	
NO.	MATERIAL	FINISH, REMARKS	NO.	MATERIAL	FINISH, REMARKS
CODE NO. (OLD) CL			DRAWN	DESIGNED	CHECKED
			HM, KUDO	MR. TAKAHASHI	MY. SHIMADA
			11.2.18	11.2.18	11.2.18
			APPROVED	RELEASED	
			ST. SAKABE		
			11.2.18		
DRAWING NO. EDC3-275821			PART NO. HT303/PO-P-2-T		
SCALE 1 : 1			CODE NO. CL350-0152-0		
UNITS mm			HRS HIROSE ELECTRIC CO., LTD		

1/1